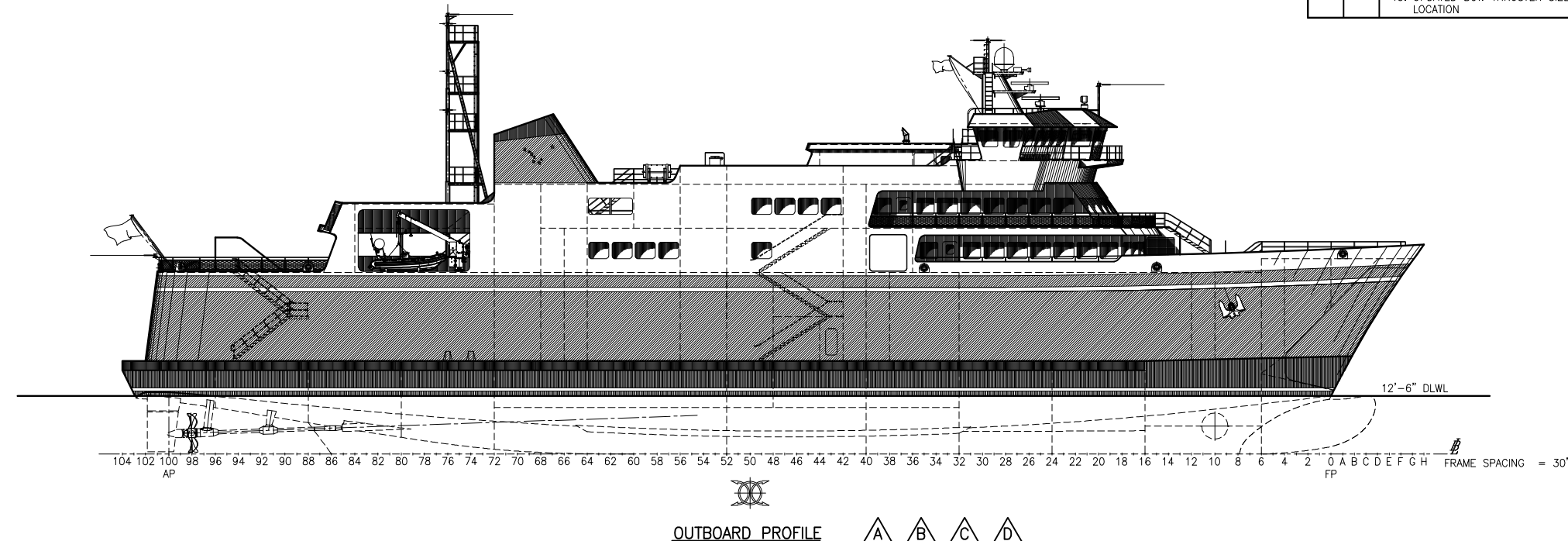


REVISION HISTORY (CONT.)						REVISION HISTORY (CONT.)						REVISION HISTORY (CONT.)						REVISION HISTORY							
REV	ZONE	DESCRIPTION	DWN	DATE	APVD	REV	ZONE	DESCRIPTION	DWN	DATE	APVD	REV	ZONE	DESCRIPTION	DWN	DATE	APVD	REV	ZONE	DESCRIPTION	DWN	DATE	APVD		
D	ALL	1. ADDED LADDER, ESCAPE HATCH AND GRAB RAIL TO ELEVATOR SHAFT.	JEH	09/09/14	PDF	B	SHT.1	1. CORRECTED OUTBOARD PROFILE AT AFT BHD OF RESCUE BOAT GARAGE.	ZDL	2/25/14	PDF	A	SHT.3	21. FR 66S, PASS DK - ADDED 12"x30" WIRE CHASE OUTSIDE AFT ELEV. BHD				A	ALL	1. REVISED WINDOWS.					
	SHT 2	2. ADDED ACCESS LADDERS TO TANKS AND TANK TOPS.					SHT.3	2. RECONFIGURE PURSER'S OFFICE.					SHT.2	22. ADDED ELEVATOR MACHINERY ROOM FWD OF ELEVATOR					SHT.3	2. REVISED EXT. DOORS.					
	SHT 3	3. REMOVED LADDERS @ FR61 IN HOLD.					SHT.3	3. REPLACE DOOR W/ OPENING IWO LIFE JACKET LKR. PAX DK P/S.					ALL	23. ADDED LADDER FOR STACK ACCESS					SHT.1, 2&4	3. ADDED DK LKR TO PORT SIDE, RENAMED CO2 RM TO FM 200 RM.					
	SHT1&2	4. REMOVED CAFETERIA WINDOWS.					SHT.1	4. ADDED COUNTERTOP & REMOVED (1) STOOL AT LIBRARY.	ZDL	3/18/14			SHT.3	24. ALL WINDOW SILL HT. TO 36"					SHT.1, 2&4	4. RELOCATED PILOT HOUSE AND DECK HOUSE ON HOUSETOP 10' FORWARD.					
		5. UPDATED RAILINGS ON FWD UPPER DK.					SHT.1 & 2	5. ADDED INNER BOTTOM MARGIN LINE AT SHELL, VOIDS 2 & 3.	DKG	6/11/14			SHT.3	25. MODIFIED RESCUE BOAT GARAGE, REPLACE GANTRY W/ DAVIT					SHT.1, 2&4	5. REVISED DECK HOUSE FRONT ON BRIDGE DECK AND UPPER DECK TO SUIT RELOCATED PILOT HOUSE.					
							SHT.1	6. DELETED WINDOWS (4) BETWEEN FR 50 & 52 ON PAX AND UPPER DECK.					SHT.3	26. MODIFIED MAIN MAST & NAV LIGHTS					SHT.3&4	6. REVISED WINDOWS IN SOLARIUM OVERHEAD.					
							SHT.4	7. ADDED MANHOLE TO EMERGENCY GENERATOR F.O. TANK, BRIDGE DECK.					SHT.4	27. ADDED STANCHIONS PASS DK FR60 23'-6" OCL					SHT.1, 2&4	7. RELOCATED MASTHEAD LIGHTS.					
							SHT.3	8. ADDED MANHOLES TO CHAIN LOCKERS P/S, CAR DECK.					SHT.3	28. REMOVED INTERIOR DOOR TO EMER. GEN. RM					SHT.1, 2&4	8. ADDED FWD MASTHEAD LIGHT MAST.					
							SHT.2	9. ENGINE RM STANCHIONS NOW 8" OD	MWR	6/12/14			SHT.4	29. PASS DK FR20, CL DOOR SHIFTED AFT					SHT.1, 2&4	9. REDESIGNED MAIN MAST TO SUIT RELOCATED NAV. LIGHTS.					
							SHT.1 & 4	10. ADDED AFT ENG RM STAIR.					SHT.4	30. UPPER DK FR44 (S) DOOR SHIFTED FWD					SHT.1, 2,3&4	10. REVISED FWD CAR DECK VENT PNGS.					
							SHT.1	11. ADDED SEARCHLIGHTS TO FWD PILOT HOUSE TOP.	DKG	6/13/14			SHT.4	31. BRIDGE DK FAN RM AIR INTAKE SHIFTED OUTBD					SHT.1, 2&3	11. REVISED FWD EXTERIOR PASS/CREW STAIR.					
							SHT.3	12. UPDATED INTAKE OPENING IN CAR DECK FR 66 TO 68 P/S.					SHT.4	32. STACK EXHAUST LOUVERS MOVED TO ABOVE BRIDGE DK. SIZE INCREASED TO 6'x8'.					SHT.1, 2&3	12. ADDED MOORING LINE LKRS FWD AND AFT ON PASSENGER DECK.					
							SHT.1 & 2	13. RAISED TOP PLATFORM ON MAIN MAST.					SHT.3	33. MODIFIED PASSENGER STAIR TOWER FR48 P/S. ADDED LKR FR42-44 PASS DK P/S.					SHT.1, 2&3	13. REPLACED HANDRAIL WITH BULWARK IWO RESCUE BOAT ENCLOSURE (P/S).					
							SHT.2 & 3	14. ADDED TONNAGE OPENING TO AFT CURTAIN PLATE ABOVE CAR DECK PORT.					ALL	34. UPDATED WINDOW SIZE AND ARRANGEMENT.					SHT.1 & 2	14. REVISED HULL LINES TO SUIT MODEL TESTING.					
							SHT.1	15. MOVED SIDE LOADING DOOR AFT 28".					SHT.1 & 2	35. UPDATED COAMING AT CAR DK VENT TRUNKS. ADDED COAMING AT RESCUE BOAT GARAGES.					SHT.1	15. ADDED BILGE KEEL.C					
							SHT.1	16. CURTAIN PLATE WEATHER TIGHT DOOR FR 43 IS NOW 6 DOG WATER TIGHT DOOR P/S.	MPS	6/17/14			SHT.4	36. ADDED ELECTRONICS RM TO NAV DK.					SHT.1, 2&4	16. REVISED HANDRAILS AT PILOT HOUSE, SLOPED TO VERTICAL.					
							SHT.1	17. BRIDGE DECK HATCH TO FAN ROOM MOVED FROM STBD TO PORT.					ALL	37. UPPER DK DOORS AT MES TO 91"Wx98"H ROLL-UP TYPE.					SHT.2	17. REVISED VL ACCESS - B.T., VOID 2&3.					
							SHT.1 & 2	18. UPDATED LOCATION OF ANCHOR AND HAWSE PIPE.	DKG	6/17/14			SHT.1 & 2	38. BRIDGE DK LNG'L BHD 3'-6" OCL, FR40-44 MOVED TO 3'-11" OCL.					SHT.3	18. REVISED WINDOW & DOOR, PURSER'S OFFICE.					
							SHT.1	19. MOVED SIDE LIGHTS UP TO NAVIGATION DECK LEVEL.	MPS	6/18/14			SHT.4	39. UPDATED FURNITURE ARRANGEMENT.					SHT.4	19. REVISED WINDOWS ON AFT SIDE OF PILOT HOUSE.					
												ALL	40. UPDATED EMER. GEN RM ARRANGEMENT.						20. ALL ABOVE TO SUIT OWNER AND/OR REGULATORY REQUIREMENTS.	REMc	1/02/2014	PDF			
							SHT.1	1. PILOT HOUSE WINDOWS SIZES UPDATED	MWR	6/27/14	PDF		ALL	41. MODIFIED ALL EXTERIOR RAILING TO PLUMB/VERTICAL EXCEPT UPPER DK HOUSE FRONT.	ZDL	2/24/14	PDF			GENERAL NOTES					
							SHT.2	2. OBSERVATION LOUNGE SEATING UPDATED					ALL	42. UPDATED DECK LINES	DKG	2/24/14	PDF			1. ALL MATERIALS AND WORKMANSHIP SHALL BE IN ACCORDANCE WITH 46 CFR SUBCHAPTER H REGULATIONS AND ABS RULES FOR STEEL VESSELS UNDER 90 METERS (295 FEET) IN LENGTH.					
							SHT.4						ALL	43. UPDATED BOW THRUSTER SIZE & LOCATION					2. FSD REFERS TO FIRE SCREEN DOORS THAT ARE NORMALLY OPEN USING A MAGNETIC HOLDBACK.						



OUTBOARD PROFILE A B C D

GENERAL NOTES
 1. ALL MATERIALS AND WORKMANSHIP SHALL BE IN ACCORDANCE WITH 46 CFR SUBCHAPTER H REGULATIONS AND ABS RULES FOR STEEL VESSELS UNDER 90 METERS (295 FEET) IN LENGTH.
 2. FSD REFERS TO FIRE SCREEN DOORS THAT ARE NORMALLY OPEN USING A MAGNETIC HOLDBACK.

PLAN INDEX	
SHEET NO.	CONTENT
1	OUTBOARD PROFILE
2	INBOARD PROFILE AND HOLD ARRANGEMENT PLAN
3	CAR, FOC'SLE, AND PASSENGER DECK ARRANGEMENT PLANS
4	UPPER DECK, BRIDGE DECK, NAVIGATION DECK, HOUSETOP AND PILOT HOUSE TOP ARRANGEMENT PLANS

RESERVATIONS	
PRINCIPAL DIMENSIONS	
LENGTH OVERALL:	280'-0"
LENGTH DESIGN LOAD WATERLINE:	257'-6"
LENGTH BETWEEN PERPENDICULARS:	250'-0"
BEAM OVER GUARDS:	67'-0"
FREEBOARD AT SIDE:	7'-6"
DEPTH AT SIDE:	20'-0"
DRAFT AT DLWL:	12'-6"
PASSENGER CAPACITY:	300
VEHICLE CAPACITY:	53 ASV

REFERENCES	
1.	AMHS 73073 CONTRACT SPECIFICATION
2.	12-100-001-001 LINES PLAN

STAMP
 PROFESSIONAL ENGINEER
 STAMP PER: -
 ENGR: WILL NICKUM
 DATED: 11/14/13
 STATE: AK
 REG NO: NM 13242

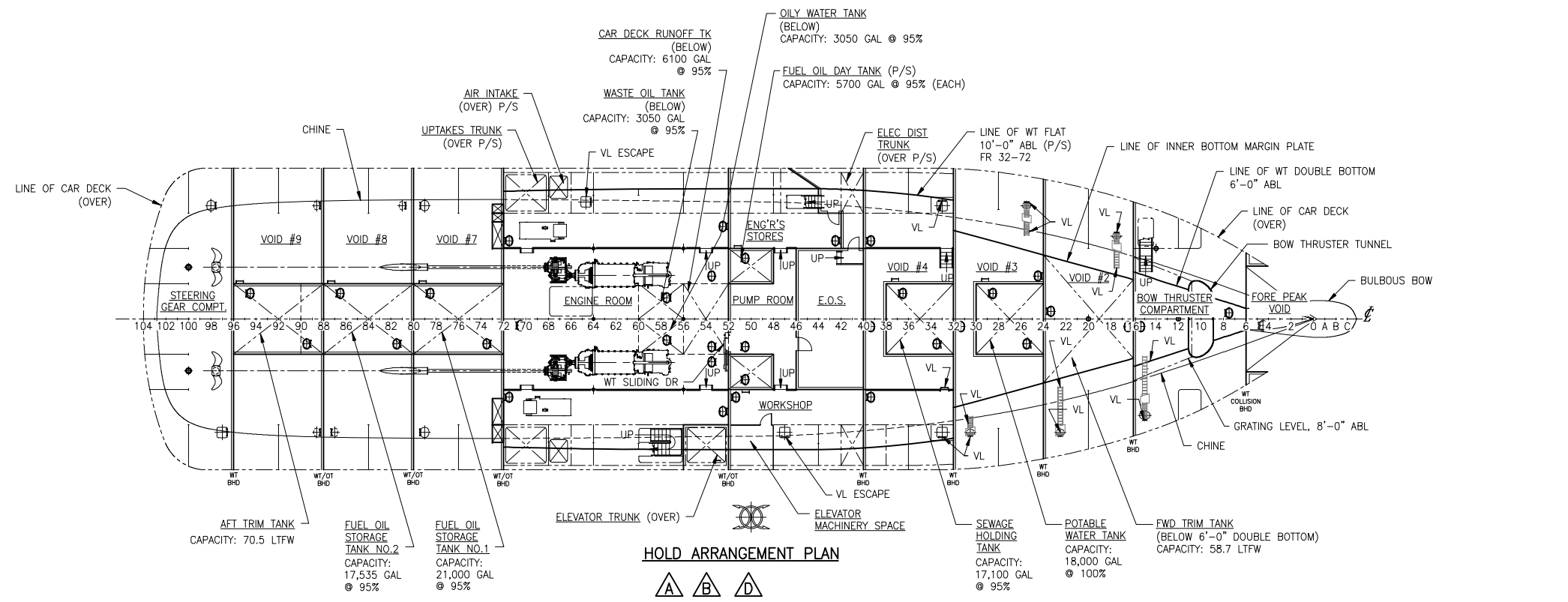


Elliott Bay Design Group
 Seattle • New Orleans • Ketchikan
 CLIENT: ALASKA MARINE HIGHWAY SYSTEM
 Ketchikan, Alaska
 PROJECT: DAY BOAT ACF - AMHS 73073

PROFILE AND ARRANGEMENTS

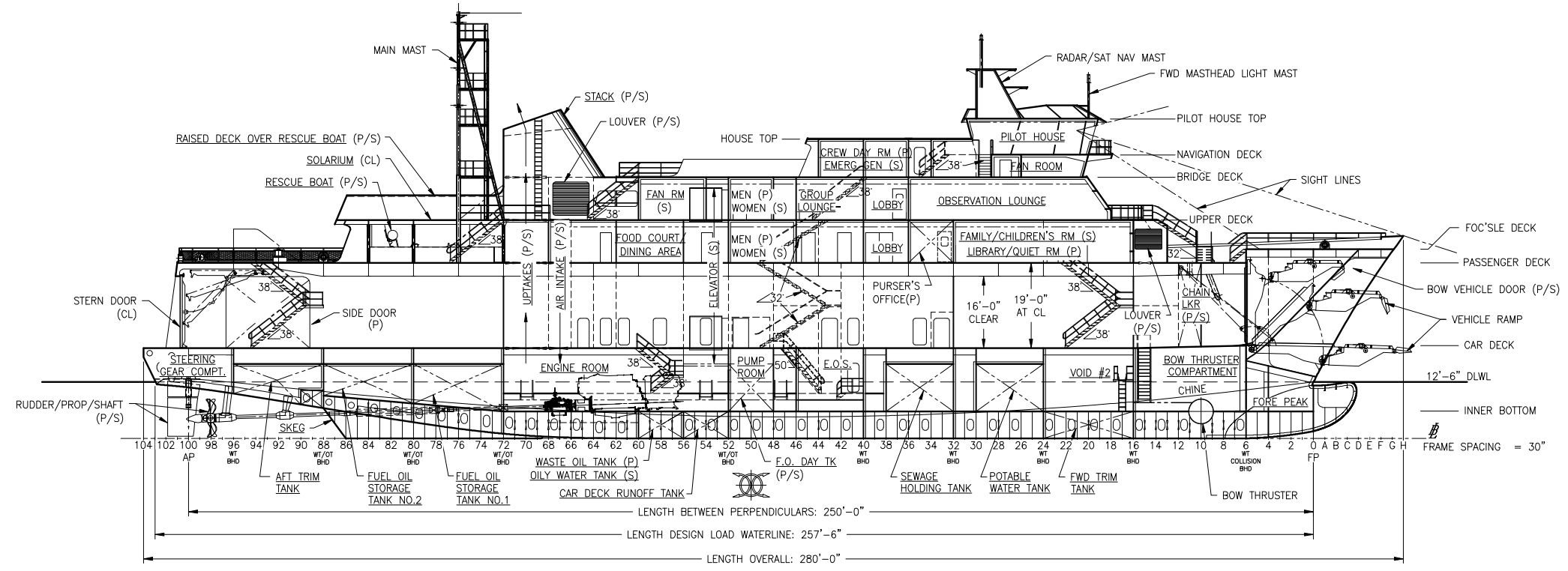
SIZE: D	DWG NO: 12-101-001-001	REV: D
EBCG DWG NO: 13001-001-101-1		
SCALE: 1/16"=1'-0"	FILE NAME: 12-101-001-001D PROF & ARRGS	SHEET 1 OF 4
DWN: REMc	MOD: CKD	APVD: WCN
		APVD DATE:

HALF SIZE PRINT
 ON 11"x17" PAPER



HOLD ARRANGEMENT PLAN

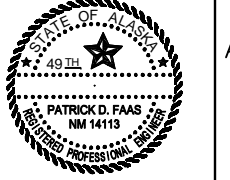
A B C D



INBOARD PROFILE

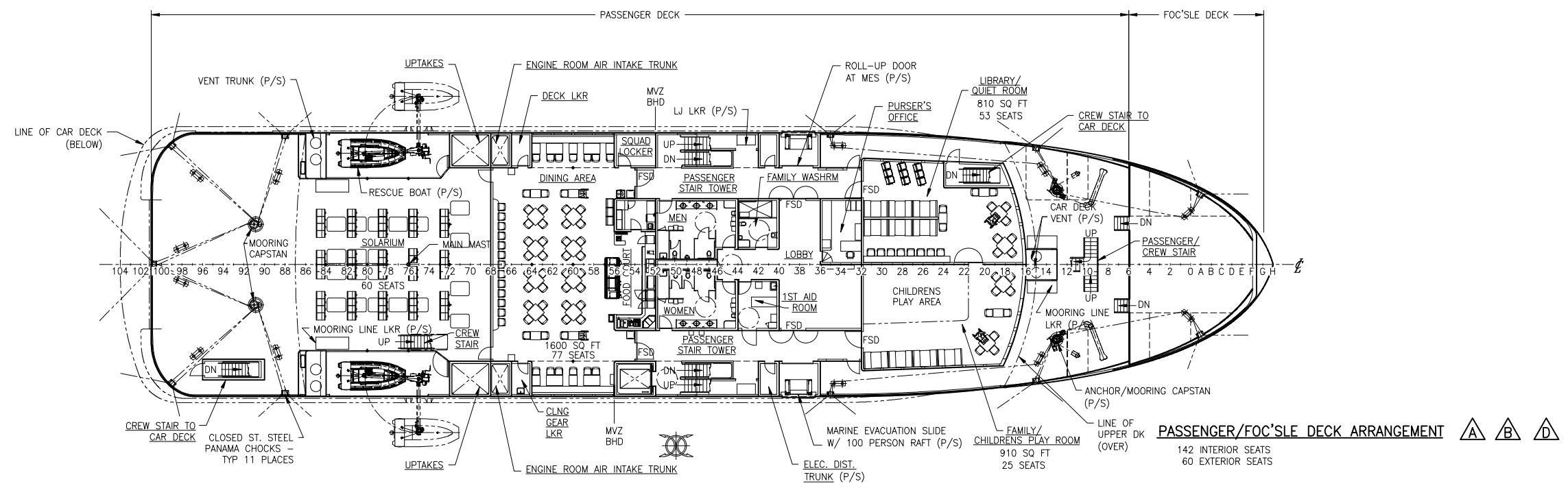
A B C D

STAMP
 PROFESSIONAL ENGINEER
 STAMP PER:
 REV: -
 ENGR: WILL NICKUM
 DATED: 11/14/13
 STATE: AK
 REG NO: NM 13242

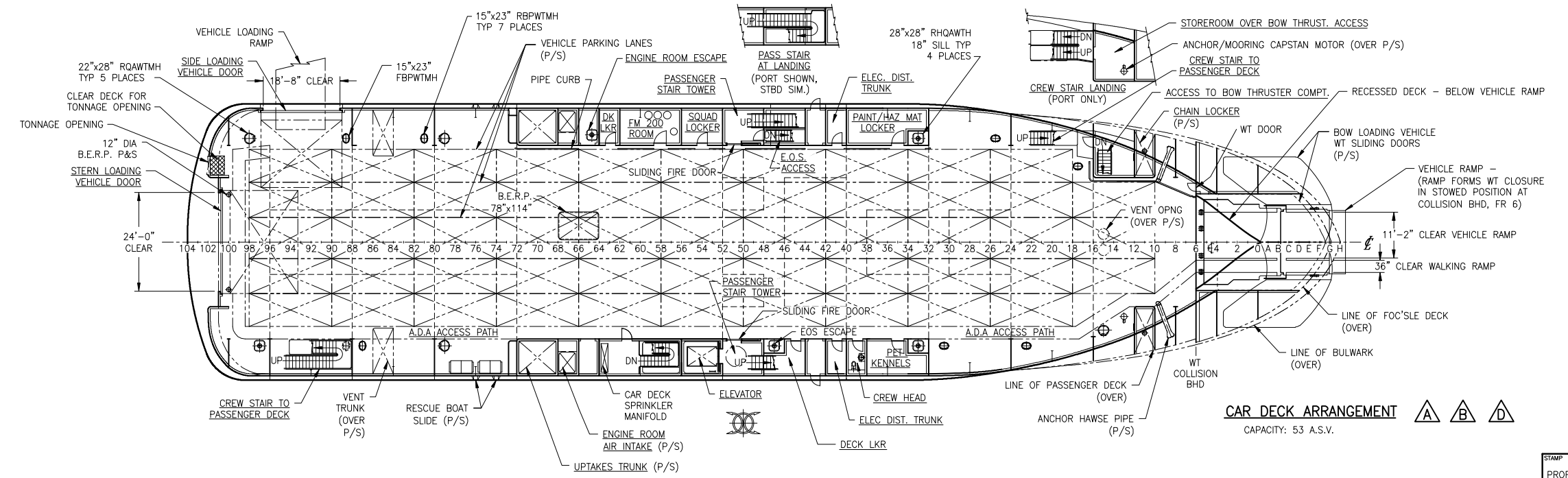


HALF SIZE PRINT
 ON 11"x17" PAPER

SIZE	D	DWG NO.	12-101-001-001	REV	D
ESDOW NO.	13001-001-101-1				
SCALE	1/16"=1'-0"		FILE NAME	12-101-001-001D PROF & ARGTS	
SHEET			2	OF 4	



PASSENGER/FOC'SLE DECK ARRANGEMENT A B D
 142 INTERIOR SEATS
 60 EXTERIOR SEATS



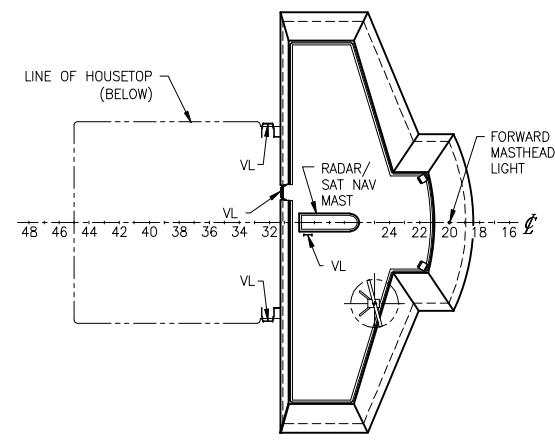
CAR DECK ARRANGEMENT A B D
 CAPACITY: 53 A.S.V.

STAMP
 PROFESSIONAL ENGINEER
 STAMP PER:
 REV: -
 ENGR: WILL NICKUM
 DATED: 11/14/13
 STATE: AK
 REG NO: NM 13242

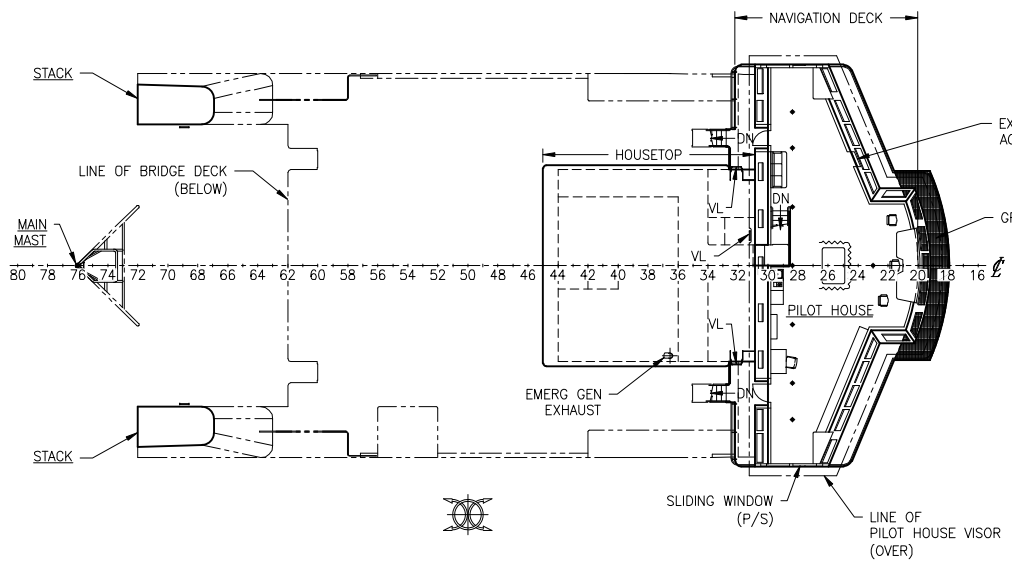


**HALF SIZE PRINT
 ON 11"x17" PAPER**

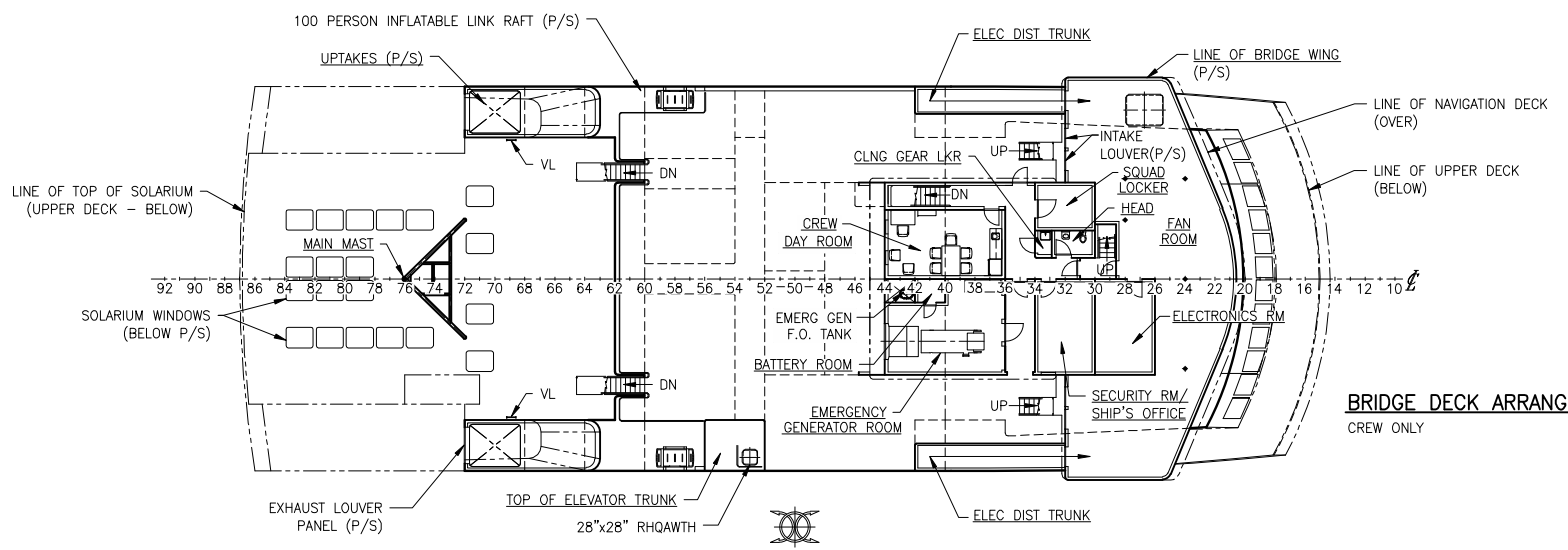
SIZE	D	DWG NO.	12-101-001-001	REV	D
ESDQ DWG NO.	13001-001-101-1				
SCALE	1/16"=1'-0"		FILE NAME	12-101-001-001D PROF & ARRGTS	
SHEET			3	OF 4	



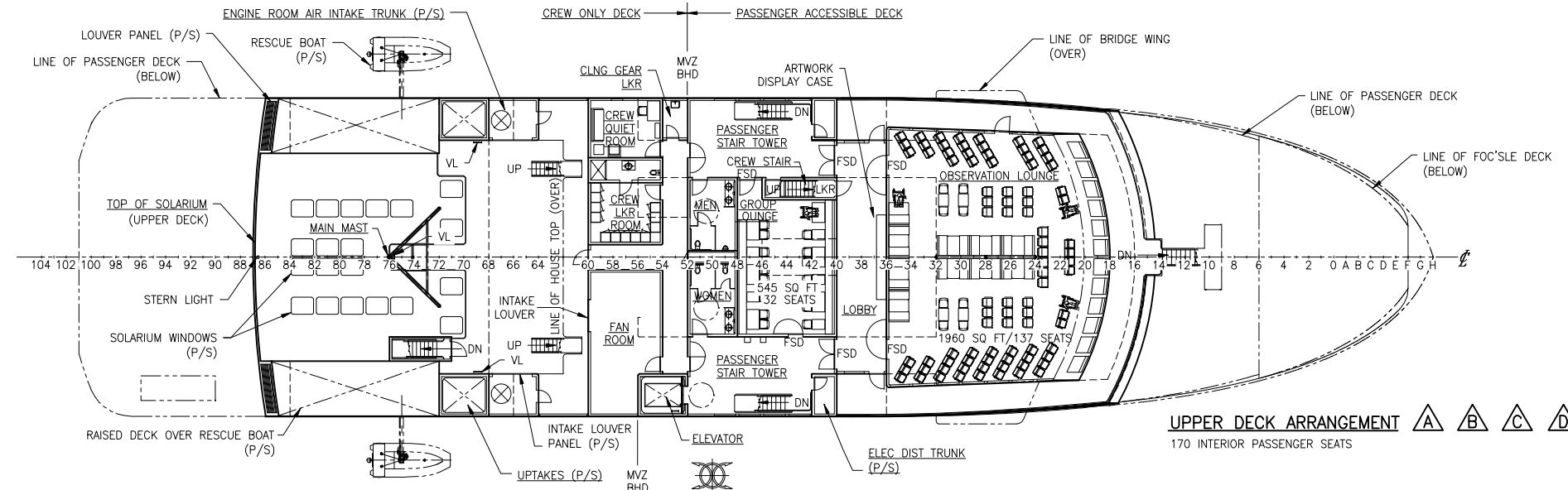
PILOT HOUSE TOP ARRANGEMENT A B



HOUSETOP AND NAVIGATION DECK ARRANGEMENT A C
CREW ONLY



BRIDGE DECK ARRANGEMENT A B D
CREW ONLY



UPPER DECK ARRANGEMENT A B C D
170 INTERIOR PASSENGER SEATS

STAMP
 PROFESSIONAL ENGINEER
 STAMP PER:
 REV: -
 ENGR: WILL NICKUM
 DATED: 11/14/13
 STATE: AK
 REG NO: NM 13242



**HALF SIZE PRINT
 ON 11"x17" PAPER**

SIZE	D	DWG NO.	12-101-001-001	REV	D
ES&D DWG NO.	13001-001-101-1				
SCALE	1/16"=1'-0"				
FILE NAME	12-101-001-001D PROF & ARRGTS				SHEET 4 OF 4