



Image source: NAPA



Image source: ACPA

# TOPS

Targeted Overlay Pavement Solutions

*A solution for extending the life of an existing pavement investment.*

Tim Aschenbrener, P.E.  
Senior Asphalt Engineer  
Pavement Materials Team  
FHWA: Office of Infrastructure



U.S. Department of Transportation  
**Federal Highway Administration**



# Disclaimer

- Except for any statutes or regulations cited, the contents of this presentation do not have the force and effect of law and are not meant to bind the public in any way. This presentation is intended only to provide information to the public regarding existing requirements under the law or agency policies.
- The U.S. Government does not endorse products or manufacturers. Trademarks or manufacturers' names appear in this material only because they are considered essential to the objective of the material. They are included for informational purposes only and are not intended to reflect a preference, approval, or endorsement of any one product or entity.
- None of the AASHTO and ASTM specifications mentioned in this presentation are required under Federal requirements.

# Acronyms and Abbreviations

- AASHTO = American Association of Highway and Transportation Officials
- AC = Asphalt content
- ARGG = Asphalt rubber gap graded
- CAM = Crack attenuating mixture
- CP2 = California Pavement Preservation Center
- EDC = Every Day Counts
- GTR = ground tire rubber
- HiMA = Highly modified asphalt
- HPTO = High performance thin overlays
- HWTT = Hamburg wheel track test
- MTV = Material transfer vehicle
- NCAT = National Center for Asphalt Technology
- NMAS = Nominal maximum aggregate size
- OGFC = open-graded friction course
- PCC = Portland cement concrete
- PG = Performance grade
- QPL = Qualified producer list
- RTR = Recycled tire rubber
- SBS = Styrene butadiene styrene
- SMA = Stone matrix asphalt
- TOM-C = Thin overlay mixture - coarse
- TOM-F = Thin overlay mixture - fine
- TSR = Tensile strength ratio
- UTBWC = Ultra thin bonded wearing course
- VCA = Voids in the coarse aggregate
- VMA = voids in the mineral aggregate

# Presentation Outline

- EDC-6 Targeted Overlay Pavement Solutions (TOPS)
- Highly Modified Asphalt (HiMA)
- Ultra-thin Bonded Wearing Course (UTBWC)
- Crack Attenuating Mixture (CAM)
- Stone Matrix Asphalt (SMA)
- Open Graded Friction Course (OGFC)
- Asphalt Rubber Gap Graded (ARGG)

# FHWA TOPS EDC-6 Team

Tim Aschenbrener

FHWA Headquarters

Bob Conway

FHWA Resource Center

Derek Nener-Plante

FHWA Resource Center

# Background

- Over 25% of all State DOT infrastructure funds go to pavements overlays.
- State DOT manage 2.8 million miles of pavements.
- *Information source: FHWA ([https://www.fhwa.dot.gov/innovation/everydaycounts/edc\\_6/targeted\\_overlay\\_pavement.cfm](https://www.fhwa.dot.gov/innovation/everydaycounts/edc_6/targeted_overlay_pavement.cfm))*



Image source: Iowa State University

# How is this different from typical overlays?

TOPS matches treatments to high-priority, high-need locations.



# EDC-6 Goals

- Increase the number of participating agencies that demonstrate, assess, or institutionalize an additional TOPS technology not previously institutionalized.
- Build awareness and expand TOPS usage.
  - Identify a champion at each State agency.
  - Share information at conferences/workshops.
  - Train people (webinars/peer exchanges).





U.S. Department of Transportation  
Federal Highway Administration



# Highly Modified Asphalt (HiMA)



# HiMA Characteristics

- Asphalt binder modified with 7 – 8% Styrene Butadiene Styrene (SBS) polymer.
- Conventional polymer modified binders contain 2 – 3% polymer.
- Polymers for HiMA binders have a slightly different chemical structure than conventional polymers.

SBS Polymer Pellets

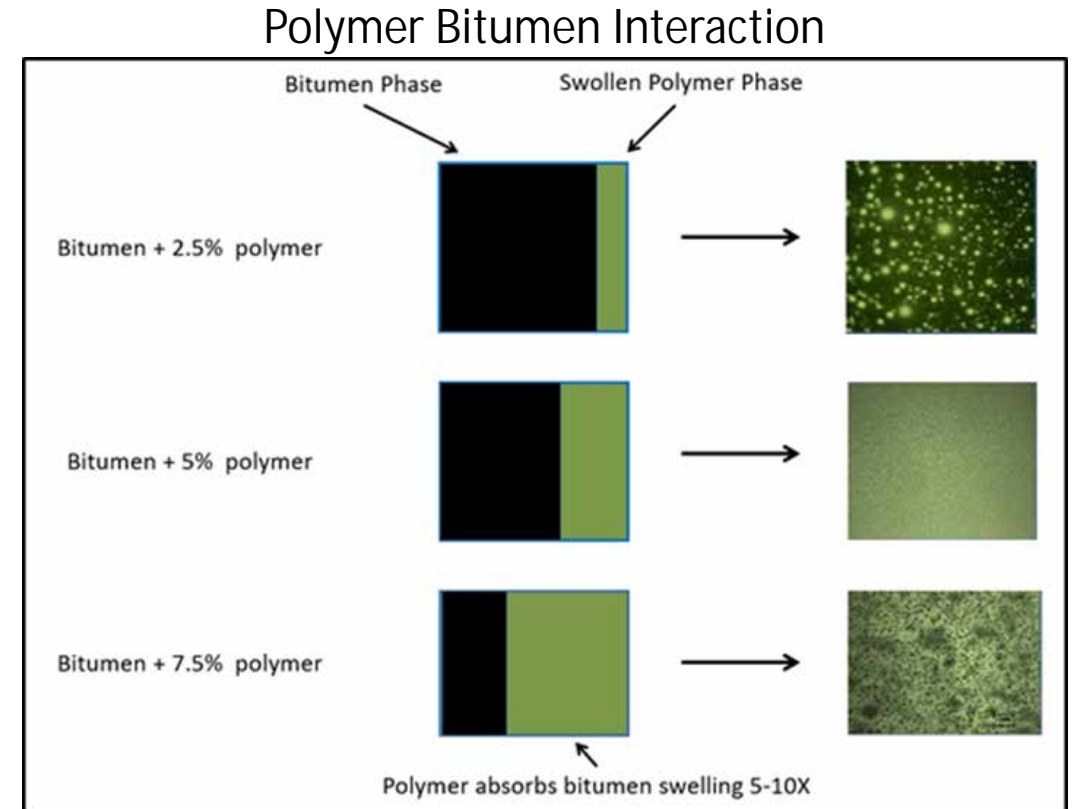


Source: NCAT

# HiMA Characteristics

Effect of increasing SBS polymer content on binder/polymer morphology.

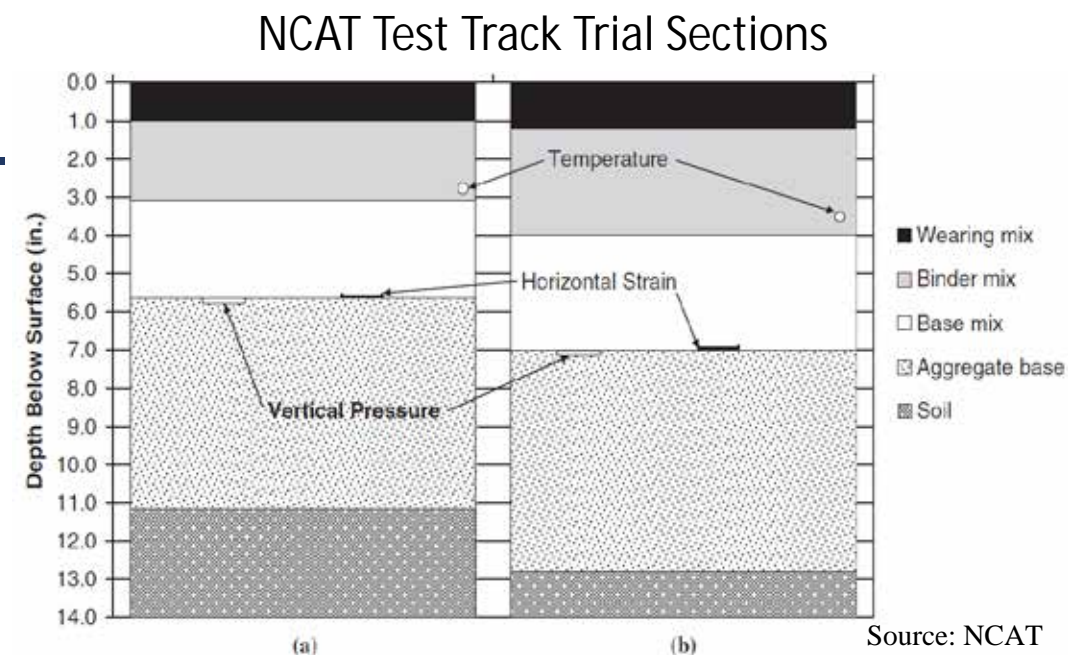
- Conventionally-modified binders consist of an asphalt binder structure with a dispersed swollen polymer phase.
- HiMA binders consist of a swollen polymer structure with a dispersed asphalt phase.
- HiMA binders behave more like rubber and enhances cracking resistance and rutting performance.



# Potential Benefits of HiMA

- Improved rutting resistance.
- Improved fatigue cracking resistance.
- Improved raveling resistance.
- Potential thickness reduction.

After 20 million equivalent single-axle loads of trafficking, the HiMA test section had performed as well or better than the control section despite being constructed 1.25 inches thinner.\*



\*Willis, R., Timm, D. and Klutz, R. (2016). Performance of a High Polymer-Modified Asphalt Binder Test Section at the National Center for Asphalt Technology Pavement Test Track. Transportation Research Record, No. 2575: 1-9. <https://doi.org/10.3141/2575-01>.

# HiMA Applications

- Project selection criteria.
  - “Premium” mixture – more costly.
  - Typically selected to target specific distresses.
- High Stress Applications.
  - Intersections; weigh stations; high volume facilities.
- Structural Applications.
  - Potential reduced pavement thickness.
  - Offset weaker base/subgrade.
- Other TOPS products:
  - Thin Overlays.
  - Open-Graded Friction Course (OGFC).
  - Crack Attenuating Mixtures (CAM) Inter-layer.
  - Stone Matrix Asphalt (SMA).



Source: Florida DOT

High Volume Intersection



Source: Florida DOT

# Materials and Mixture Properties

## Binder Specifications (AASHTO M 320)

Agency	Performance Grade	Properties
Minnesota	PG 76-34	ER $\geq$ 90%
New Hampshire	PG 76-34	ER $\geq$ 90%
Ohio	PG 88-22	ER $\geq$ 90%
Oregon	PG 76-28	ER $\geq$ 90%
New York City	PG 76-34	ER $\geq$ 90%
Utah	PG 76-34	ER $\geq$ 90%
Vermont	PG 76-34	ER $\geq$ 90%
Washington	PG 76-34	ER $\geq$ 90%

*Use of the AASHTO M 320 specification is not a Federal requirement.*

# Production and Construction Practices

- When starting, suppliers may be limited.
  - Monitor projects during design.
  - Talk with HiMA binder suppliers.
- HiMA binder is more difficult to produce.
  - Good communication to assure timely supply.
- Finite storage period.
  - Allowances provided to minimize storage issue.
    - Blend down procedure.
    - Usage in non-HiMA applications with RAP.

Binder Storage Tanks



Source: CRH Americas Materials

# Florida DOT HiMA Projects

- HiMA is the premier binder - replaced PG 82-22.
- Completed 50+ projects with HiMA.
- Placed over 600,000 tons of HiMA mix.
- Usage is growing – but where needed.
- 8 asphalt terminals on QPL.



Image Source: Florida DOT



Image Source: Florida DOT





U.S. Department of Transportation  
Federal Highway Administration



# Ultra-Thin Bonded Wearing Coarse (UTBWC)

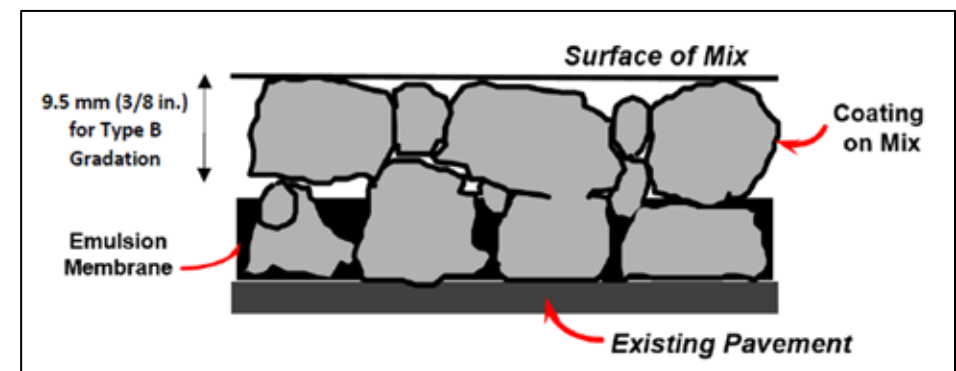


# UTBWC Characteristics

- Heavy, polymer-modified asphalt emulsion membrane.
- Placed using a spray paver in a single pass.
- Placed in 0.4-inch to 0.8-inch lift.
- Gap-graded polymer-modified No. 4 to ½ inch NMAS asphalt mixture.



Newly Paved Ultra-Thin Bonded Wearing Coarse (UTBWC) Section Source: MnDOT 2022



UTBWC Schematic Source: MnDOT 2018

# UTBWC Terminology

- Minnesota DOT (MnDOT)
  - Ultra-thin bonded wearing course (UTBWC)
- Pennsylvania DOT (PennDOT)
  - Mixture: Ultra-thin wearing course (UTWC)
  - Emulsion: Ultra-thin wearing course emulsion membrane (UTWCEM).
- California DOT (Caltrans)
  - Bonded wearing course (BWC)

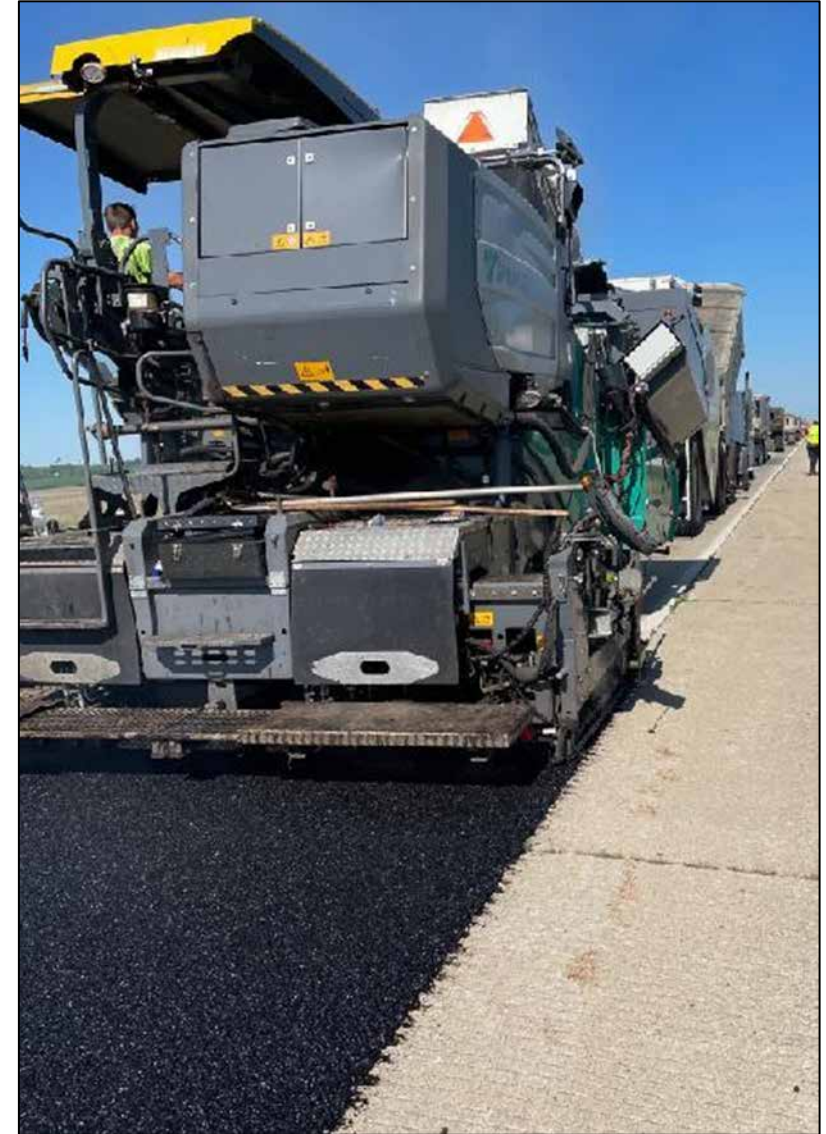
Placement of UTBWC



Source: MnDOT

# UTBWC Background

- Proprietary system originally developed in France in 1986.
- Successfully used in Europe as preventive maintenance and surface rehabilitation technique.
  - Restoring skid resistance.
  - Sealing the surface.
- First sections of UTBWC in the U.S. were placed by Mississippi, Alabama, and Texas DOTs in the early 1990s.
- Over the years, optimized materials and construction processes.



Source: Asphalt Surface Technologies Corp

# UTBWC Applications

- Pavement preservation to extend pavement life.
- The underlying pavement must be structurally sound and in “good” condition with only minor distresses.
- Adds service life to the pavement without a significant change in profile grade.
- High traffic volumes / Interstates.



Source: MNDOT

# Production and Construction Practices

## Spray Paver.

- Combines tack distributor and paver.
- Bonding agent and HMA placed in one pass.
- Improved bonding since there are no opportunities to track dirt and debris onto tack/bonding or pickup tack/bonding on construction equipment.

Material Transfer Vehicle (MTV) and Spray Paver



Source: Asphalt Surface Technologies Corp.



Source: Arrmaz (2016)

# Minnesota DOT UTBWC Projects

- One of the most expensive applications per square yard compared to other non-HMA treatments.
- Performance is expected from 7 to 12 years, an average of one-third more life than other treatments.
- Average gain in pavement life using UTBWC exceeds the additional cost needed to apply other similar treatments.



Source: Asphalt Surface Technologies Corporation



U.S. Department of Transportation  
Federal Highway Administration



# Crack Attenuating Mixture (CAM)





# CAM Characteristics

- Interlayer paired with surface mix.
- Aggregate components:
  - Fine gradation.
  - NMAS of No. 4 to 3/8 inches.
  - High-quality aggregates
- Binder components:
  - High asphalt content (typically around 7.0%).
  - Polymer-modified asphalt.
- Mixture performance testing for crack and rut resistance.

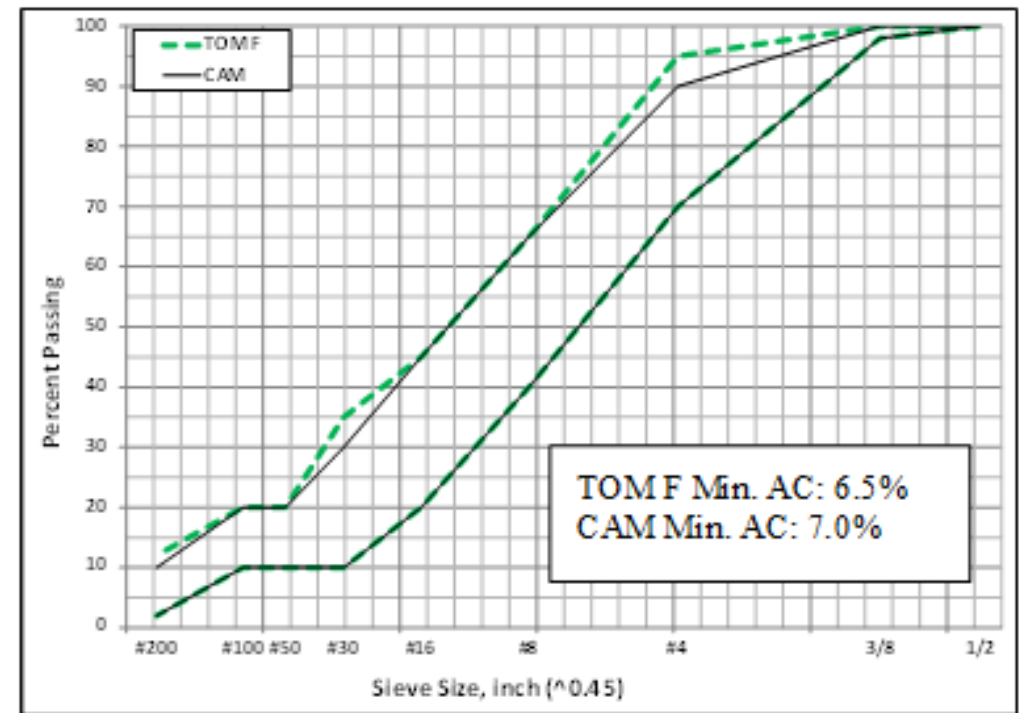
# CAM Terminology

- Binder/bituminous-rich intermediate course (BRIC).
  - New Jersey DOT.
- Engineered stress relief course (ESRC).
  - Nevada DOT.
- Stress Absorbing Membrane Interlayer (SAMI).
- Crack relief interlayer.
- Stress relief course.
- Fracture-tolerant shear-resistant interlayer.

# CAM Background

- Inspired by a proprietary crack relief interlayer marketed in the 1990s.
- The proprietary product was crack resistant but not rut resistant.
- TxDOT desired product that used local materials and was crack and rut resistant.
- TOM-F Background
  - Developed to find a use for a surplus of high-quality fine aggregate piles leftover from coarse aggregate production.

Broadband gradations for CAM and TOM-F



Source: FHWA 2021

# Potential Benefits of CAM

Properly designed CAM interlayers can reduce the number of reflective cracks and slow the rate of reflective cracking.

Lab samples of CAM interlayer and TOM-C surface course.



Source: Tom Scullion, TTI, 2014

# CAM Applications

- Interlayer for reflective crack mitigation.
  - Concrete.
  - Asphalt.
- TxDOT rule of thumb(TxDOT 2021):
  - Surface cracks not wider than 3/8 inch.
  - Rutting less than 1/2 inch.
- Surface mixture selection important.
  - Some crack attenuating properties in the surface mix to mitigate crack jumping.

Crack jumping observed in core sample

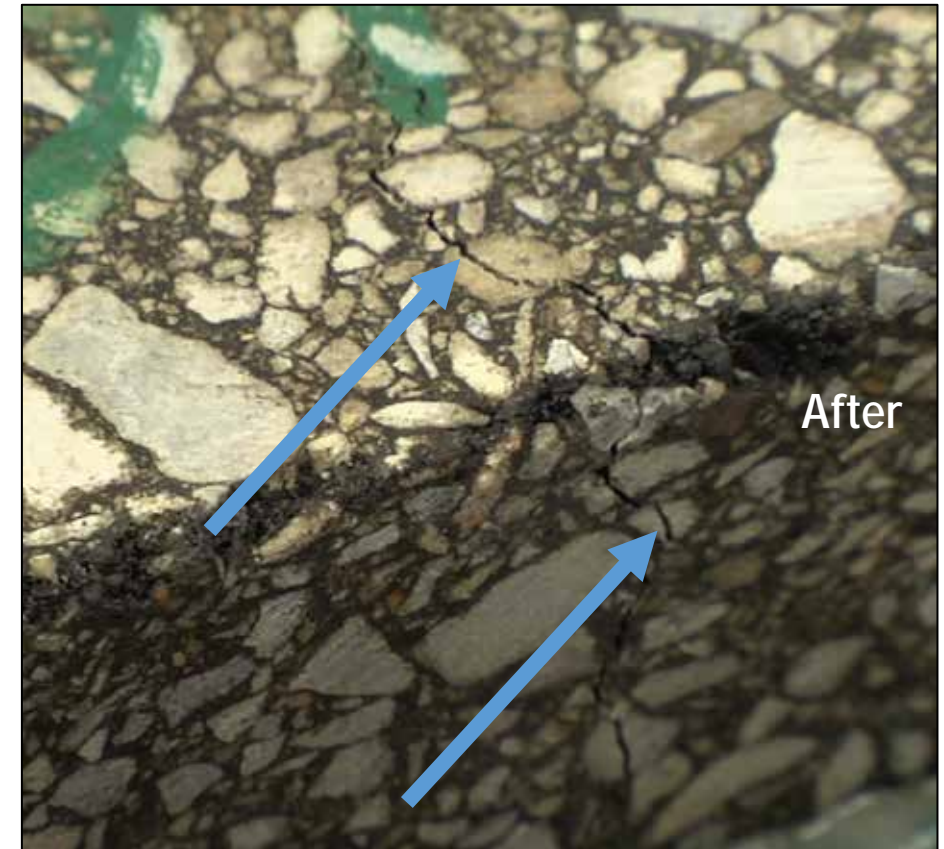


Source: Bennert, 2018

# Performance Testing – Crack Resistance Overlay Test Tex-248-F



Source: Tom Scullion, TTI, 2014



Source: TTI 2015

# Performance Testing – Rut Resistance

## Hamburg Wheel Tracking Test: Tex-242-F

HWTT test equipment



Source: NCAT, 2021

HWTT test specimens after testing



Source: Tom Scullion, TTI, 2014

# Production and Construction

- Repair of existing significant or structural distresses.
- Dry surface.
- Mechanism to encourage bonding and sealing (as needed) between lifts.
- Deliver  $>300^{\circ}\text{F}$  with ambient  $>70^{\circ}\text{F}$ .
  - Cools quickly.



Source: TxDOT (2021)



# Texas DOT CAM Projects

- TxDOT has been using CAM since the early 2000s.
- Concept for CAM interlayers was initially developed as a reflective cracking mitigation.
- Overlaid with TOM-C or SMA.
- Properly designed crack attenuating interlayers can reduce the number of reflective cracks and **slow down the rate of reflective cracking up to 50 percent.**
- Cost effective!!





U.S. Department of Transportation  
Federal Highway Administration



# Stone Matrix Asphalt (SMA)



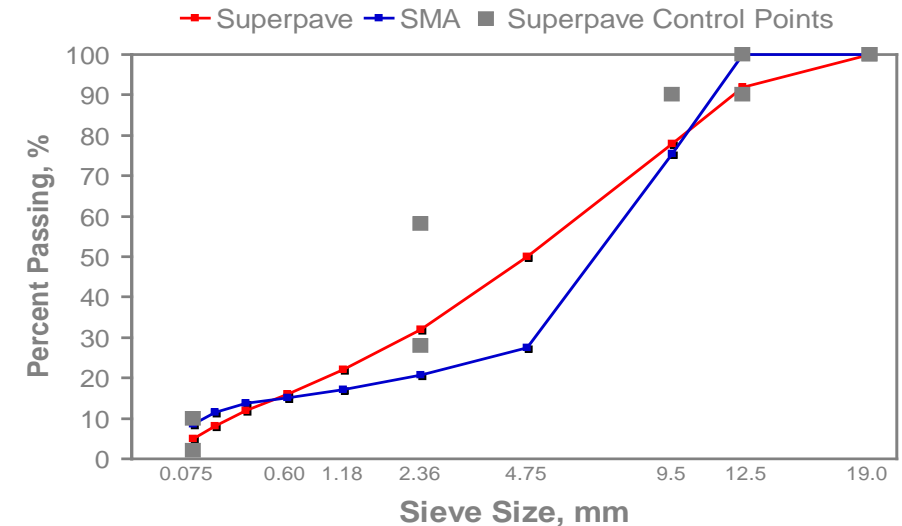
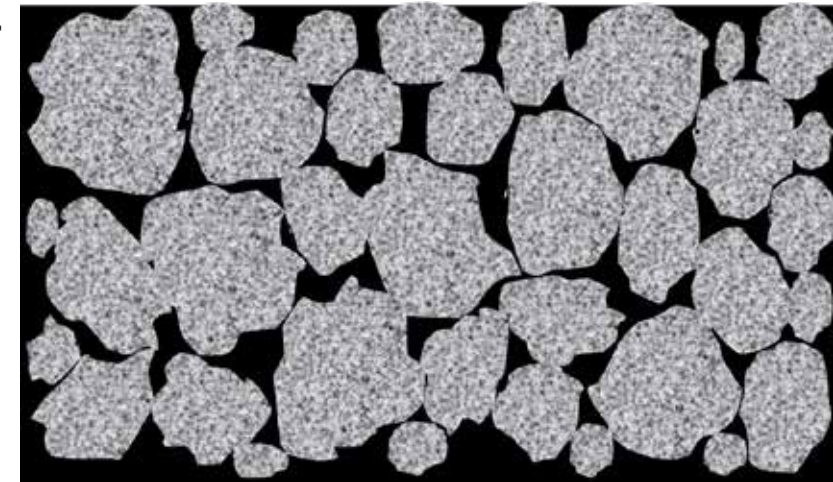
# SMA Characteristics

- What is SMA?
  - Gap-graded asphalt mixture.
- High quality aggregate.
  - L.A. abrasion- 30% loss maximum.
  - Design for stone-on-stone contact.
  - Fine aggregate angularity- 45% minimum.
- Rich binder mortar.
  - High asphalt content.
    - Approximately 25% thicker asphalt film than conventional mix.
  - Modified binder.
  - Mineral filler.
  - Stabilizing additives.

AASHTO M 325  
AASHTO R 46

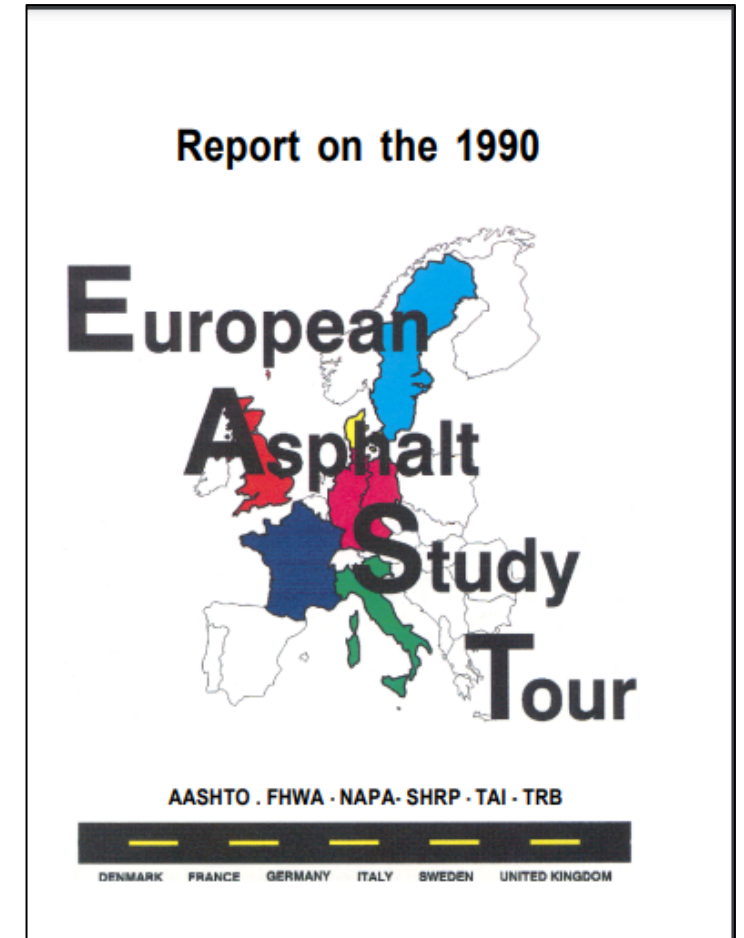
Stone-on-Stone Contact

Source: NCAT



# SMA Background

- Developed in Germany in 1960s.
- Introduced to U.S. in 1990.
  - Partnership of industry, government, and research.
  - Placed in heavy traffic areas.
- Current U.S. usage.
  - 18 State DOTs routinely.
  - 40 State DOTs using.



# Potential Benefits of SMA

- Extended pavement life.
  - Longer service life.
  - Lower life cycle cost.
- Maximizes rutting resistance and durability.
  - Stone-on-stone contact.
  - High asphalt binder mortar.
- Retards reflective cracking on concrete pavement overlays.
- Noise reduction.
- Improved visibility on wet pavements.

Conventional Asphalt Mix vs. SMA

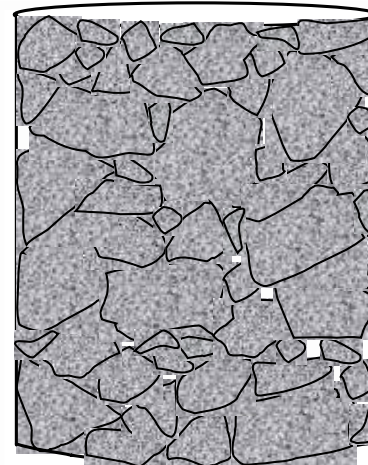


Source: NCAT

# Materials and Mixture Properties

- Mix design.
  - Gradation.
  - VCA (AASHTO T 19).
  - Compaction.
    - Method varies by agency.
  - VMA – 17.0% minimum.
  - Design air voids - 3.0 to 4.0%.
  - Minimum AC.
  - Draindown.
  - Moisture susceptibility.

AASHTO T 19



Source: Bill Pine

Draindown Testing



Source: NCAT

# Production and Construction

- Temperature is key.
- Production.
  - Minimize start-ups and shut-downs.
  - Split primary coarse aggregate into two feeders.
  - Modify silo for feeding mineral filler.
  - Provide fiber dispersing machine.
- Placement.
  - Minimize hand work.
  - Keep operation moving with sufficient trucks.
- Compaction.
  - Pneumatic rollers not recommended.
  - Target 5% air voids.
    - 95% theoretical maximum density.

Mineral Filler Silo



Source: NCAT

Keep Operation Moving



Source: Georgia DOT

## More than 4.4 million tons of SMA mix have been placed in Georgia since 1991

- Georgia uses 12.5-mm SMA beneath OGFC on all asphalt interstates.
- 19-mm SMA has been used as the intermediate layer on several GDOT projects with excellent performance!
  - This mix has been placed typically when overlaying PCC pavements.
- Projects 27 years old and counting...







U.S. Department of Transportation  
Federal Highway Administration



# Open-Graded Friction Course (OGFC)



# OGFC Characteristics

- Open-graded asphalt mixture with a high percentage of coarse aggregates almost uniform in size.
- Aggregate skeleton produces high air voids and coarse texture – improving friction and allowing water to drain
- Can be used as a surface lift or as part of an entire porous pavement system.

Newly paved OGFC

# OGFC Terminology

- PEM: Permeable European Mix.
  - Porous asphalt.
  - Plant mix seal coat.
  - Popcorn mix.
  - OGSC: Open-graded surface course.
  - PFC: Permeable/porous friction course.
- 
- Note: Some DOTs differentiate between these mixtures (e.g., Georgia DOT uses both OGFC and PEM). The mixtures and specifications are similar but not the same.



Source: SCDOT 2022

# OGFC Background

- Used in the United States and worldwide for decades.
- Some DOTs have stopped using them due to durability or maintenance issues.
- Many agencies are improving mixtures and specifications to increase durability while still achieving the safety benefits.

Reduction of splash and spray (right)  
compared to dense graded surface (left)



Source: National Center for Asphalt Technology

# OGFC Applications

- Project selection criteria:
  - High traffic.
  - High speeds.
    - Many agencies use on all interstates.
  - Areas with evidence of wet-weather crashes.
- Repair existing structural distresses before placing OGFC.

Placing OGFC



Source: SCDOT 2022

# Maintenance

- Over time, OGFC can become “clogged.”
  - Few agencies report maintenance to unclog.
  - Still may have improved permeability compared to dense graded mixtures.
- Winter maintenance techniques may vary compared to dense graded mixtures.
  - Avoid use of sand.
  - Rates of de-icing or salting may be higher than dense-graded mixes.
    - (25-50% higher, but traffic plays a role).
    - Pre-wetted salt (compared to brine or dry) can be effective.
    - Anti-icing is effective (sensitive to timing since it is placed before storms).
  - Careful snowplowing techniques.
  - Training for maintenance personnel.



# South Carolina DOT OGFC Projects

- South Carolina receives nearly 50 inches of rain annually.
- SCDOT has used OGFC for years to help reduce hydroplaning on high-volume routes.
- When SCDOT realized it was getting about half the life expectancy out of its OGFC projects, the agency worked with Clemson University to identify ways to improve OGFC.
  - Determining the optimum binder content.
  - Select aggregate gradation for the necessary thickness.
  - Identify best practices for construction.
  - Identify potential maintenance solutions.

9.5 mm OGFC



Source: SCDOT, 2021



U.S. Department of Transportation  
Federal Highway Administration



# Asphalt-Rubber Gap Graded (ARGG) Mixtures





# ARGG Mixture Characteristics

- Asphalt rubber binder.
- Gap-graded asphalt mixture.
- Top-size aggregate from 9.5 to 12.5 mm.
- Thicknesses ranging from 1.2” to 2.4”.
- Designed using slightly modified test methods and specifications.
- Used in a wide range of traffic levels in urban areas, with considerable stop and go traffic.



Source: National Center for Asphalt Technology

# ARGG Mixture Background

- Modern use started in the 1960's.
  - Charles McDonald, Materials Engineer, City of Phoenix.
- Originally developed as a surface treatment.
- Work expanded to crack-relief and open-graded layers.
  - Asphalt rubber was field blended.
- Additional work by City of Phoenix and Arizona DOT (ADOT) led to the initial growth of ARGG applications – Primarily in Arizona.
  - Mid 1970's ADOT adopted the use of ground tire rubber (GTR) in pavement interlayers, chip seals, and later as a binder modifier used in open-graded and gap-graded mixes.





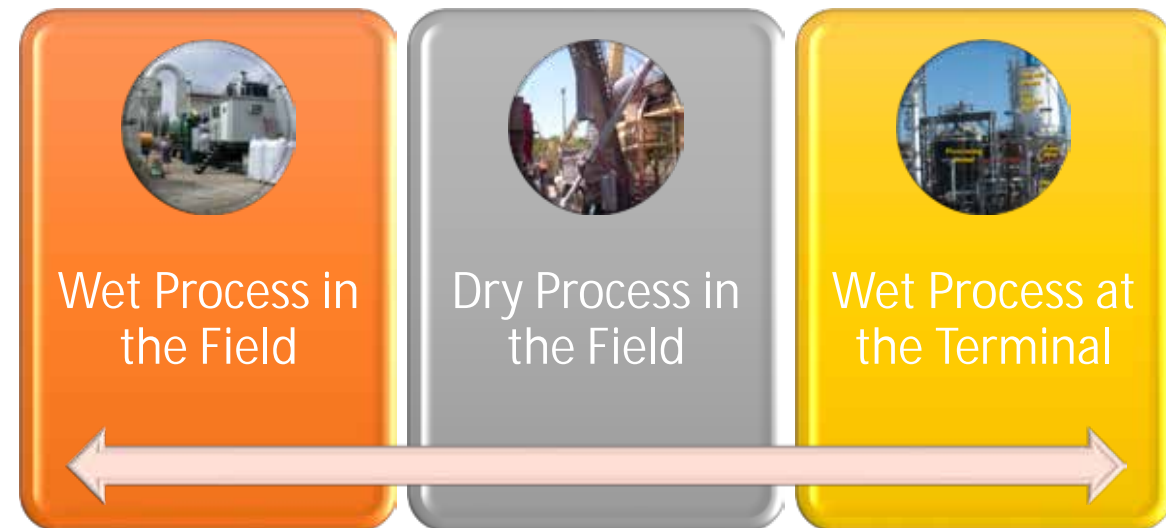
Source: James Musselman



30 Mesh  
0.60 mm

# ARGG Mixture Terminology

- Recycled tire rubber is sometimes referred to as:
  - Recycled tire rubber (RTR).
  - Ground tire rubber (GTR).
  - Crumb rubber modifier (CRM).
- Three basic methods of blending GTR with asphalt binder:
  1. Wet Process on-site.
  2. Wet Process at terminal.
  3. Dry Process on-site.



# Potential Benefits of ARGG Mixtures

- Reduction of:
  - Cracking.
  - Reflective cracking.
  - Thermal cracking.
  - Rutting.
  - Oxidation.
- Provides smooth surfaces.
- Distresses progressed at a much slower rate.
- Beneficially uses waste tires – reduces carbon footprint.



Source: National Center for Asphalt Technology

# Production and Construction

## Asphalt Rubber Binder Considerations:

- GTR binder should not be used during the reaction period of 45 minutes.
  - Keep GTR binder between 375°F and of 425°F.
- If GTR binder is not used within four hours after the reaction period, heating should be discontinued.
- Reheat no more than twice.
- Maximum mixing temperature is typically 325°F.

Asphalt Rubber Blending Unit



Source: CEI Enterprises

# Caltrans

## ARGG Mixture Projects

- Asphalt rubber overlays are more cost effective in all areas of California (CP2 2012).
  - The study was based on the conservative assumption that a conventional HMA overlay has a life expectancy of 5 years, whereas an asphalt rubber overlay has a life expectancy of 6 years.
- Cost savings were higher for larger projects, and for highways with higher traffic volumes (such as interstates) due to lower user-delay costs.
- CP2 2015
  - Caltrans could save about 21% by using asphalt rubber.
  - Use of asphalt rubber is cost effective over 84% of the time.

California Pavement Preservation Center (CP2)

# Presentation Outline

- EDC-6 Targeted Overlay Pavement Solutions (TOPS)
- Highly Modified Asphalt (HiMA)
- Ultra-thin Bonded Wearing Course (UTBWC)
- Crack Attenuating Mixture (CAM)
- Stone Matrix Asphalt (SMA)
- Open Graded Friction Course (OGFC)
- Asphalt Rubber Gap Graded (ARGG)





U.S. Department of Transportation  
Federal Highway Administration



# Summary



# TOPS Website (Asphalt)

- Case Study Reports
  - How To Reports
    - One Pagers
      - Webinars



The screenshot displays the 'Pavements' section of the TOPS website. The header includes the U.S. Department of Transportation Federal Highway Administration logo and navigation links for 'About', 'Programs', 'Resources', 'Bidding Room', 'Contact', and 'Search FHWA'. Below the header is a navigation bar with categories: 'Design & Analysis', 'Materials Quality Assurance', 'Sustainability', 'Pavement Management & Performance', and 'Pavement & Materials'. The main content area is titled 'Asphalt Resources' and contains several sections:

- Case Study Brochures:**
  - Crack Alternating Mixture
  - Stone Modified Asphalt
  - High-Performance Thin Overlay
  - Stone Matrix Asphalt
- Case Study Reports:**
  - Crack Alternating Mixture
  - Stone Modified Asphalt
  - High-Performance Thin Overlay
  - Stone Matrix Asphalt
- How To Reports:**
  - Crack Alternating Mixture
  - Stone Modified Asphalt
  - High-Performance Thin Overlay
  - Crack Alternating Mixture Source
  - Stone Matrix Asphalt
- One Pagers:**
  - Arabian Rubber Over Gravel
  - Crack Alternating Mix
  - Cracked Asphalt Overlay
  - Stone Modified Asphalt
  - Open-Graded Friction Course
  - Stone Matrix Asphalt
  - Ultra-Thin Bonded Aggregate Source
- Other Resources:**
  - Texas Case Study: Modified Asphalt in the Test / TxDOT Monthly Web
- Reports:**
  - Rutgers University: High-Performance Thin Overlay
  - Texas A&M: Thin Overlay Information
  - National Center for Asphalt Technology: Stone Modified Asphalt
- Webinars:**
  - High-Performance Thin Overlays (HPTO) and Crack Alternating Mixture (CAM) (Dec. 2021)
    - [Introduction] [Event Page]
    - EOC-6 TOPS Overview (4:04)
    - Intro to HPTO (1:10:48)
    - New Jersey HPTO Case Study (2:15:35)
    - Intro to CAM (40:34)
    - Texas CAM Case Study (1:50)

On the right side of the page, there is a photograph of a road construction site showing a paving machine laying asphalt. Below the photo is an 'Email Notification' section with a link to 'Join the FHWA Pavement & Materials Email List to receive updates about the Program'. Further down are sections for 'More Information' (Pavement Notebook, Pavement Publications) and 'Contacts' (Timothy Aschenbrenner, Office of Preservation, Construction and Pavements, 750-693-8247, Email: Timothy; Robert Conway, Resource Center, 202-408-0638, Email: Robert).

[https://www.fhwa.dot.gov/pavement/tops/asphalt\\_resources.cfm](https://www.fhwa.dot.gov/pavement/tops/asphalt_resources.cfm)

**Want more information on TOPS?**

**Contact the TOPS lead:**

Tim Aschenbrener, P.E.

Senior Asphalt Engineer

FHWA – Pavement Materials Team

Timothy.Aschenbrener@dot.gov

# Thank you

Questions / Comments



U.S. Department of Transportation  
**Federal Highway Administration**

