

Alaska DOT&PF Northern Region



Parks Hwy Projects

- Parks Highway MP 206 - 210
- Parks Highway, Nenana Canyon
- Parks Highway MP 262 North
- Parks Highway Monderosa RR Overpass

Mix Design

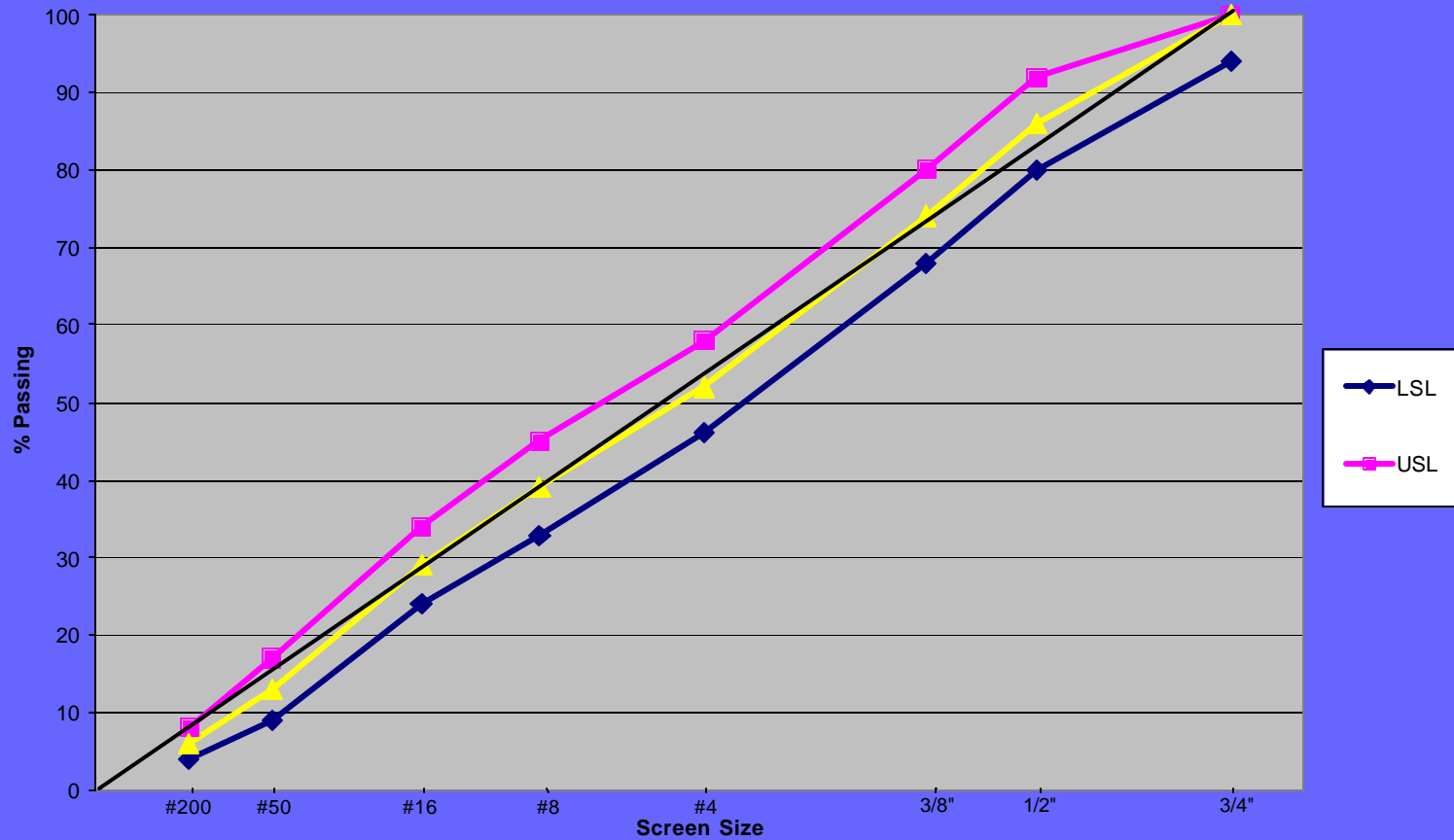
- 5.3% - PG 58-28
- Type II, Class B
- Marshall stability - 2300 lbs.
- Voids - 3.5%
- VMA - 17.9%

Gradation

Size	% Passing
3/4"	100
1/2"	86
3/8"	74
#4	52
#8	39
#16	29
#30	22
#50	13
#100	8
#200	6

Gradation

Parks Highway Projects - Type II
Gradation on 0.45 Power Scale



Parks Hwy 206 - 210



- 4 miles paving
- 2 inches HMA over RAP/crushed base course
- Wilder Construction
- Project Engineer - Jason Sakalaskas



17 2:33 PM

Parks Hwy Nenana Canyon



- 1 Mile of paving
- PG 58-28
- 2 inches over CABC
- Wilder Construction
- Project Engineer - Tom Kent









Parks Hwy - Monderosa

- 1.2 miles
- 3 inches HMA over CABC
- North Star Paving
- Jim Payne - Project Engineer





Parks Hwy MP 262 North



- 26 miles of paving
- 2 to 3 inches HMA over a 50/50 mix of RAP and aggregate (6 inches)
- Wilder Construction
- Project Engineer - John Pfeffer







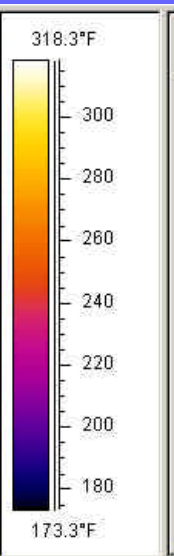
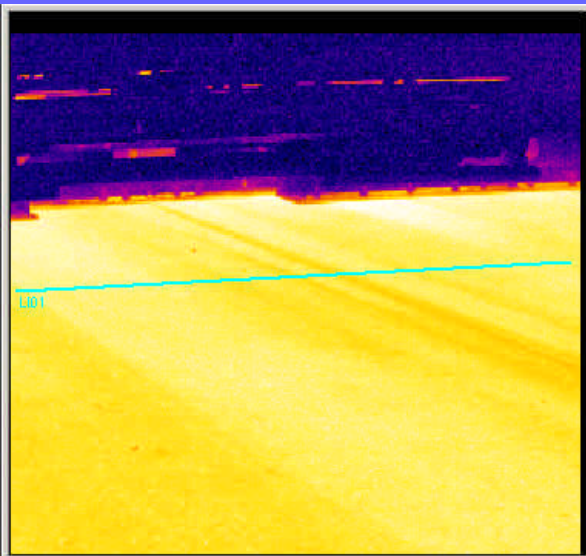




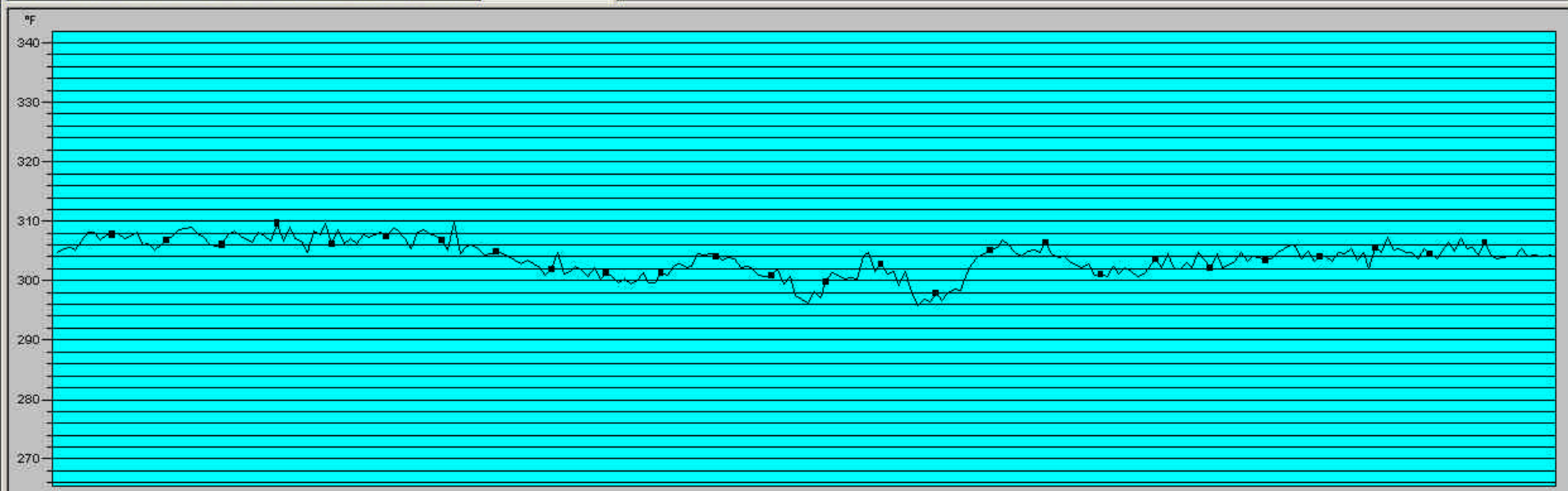


Thermal Imaging

- Thermal camera measures temperature across the mat.
- Shows areas of thermal segregation or uneven temperature.

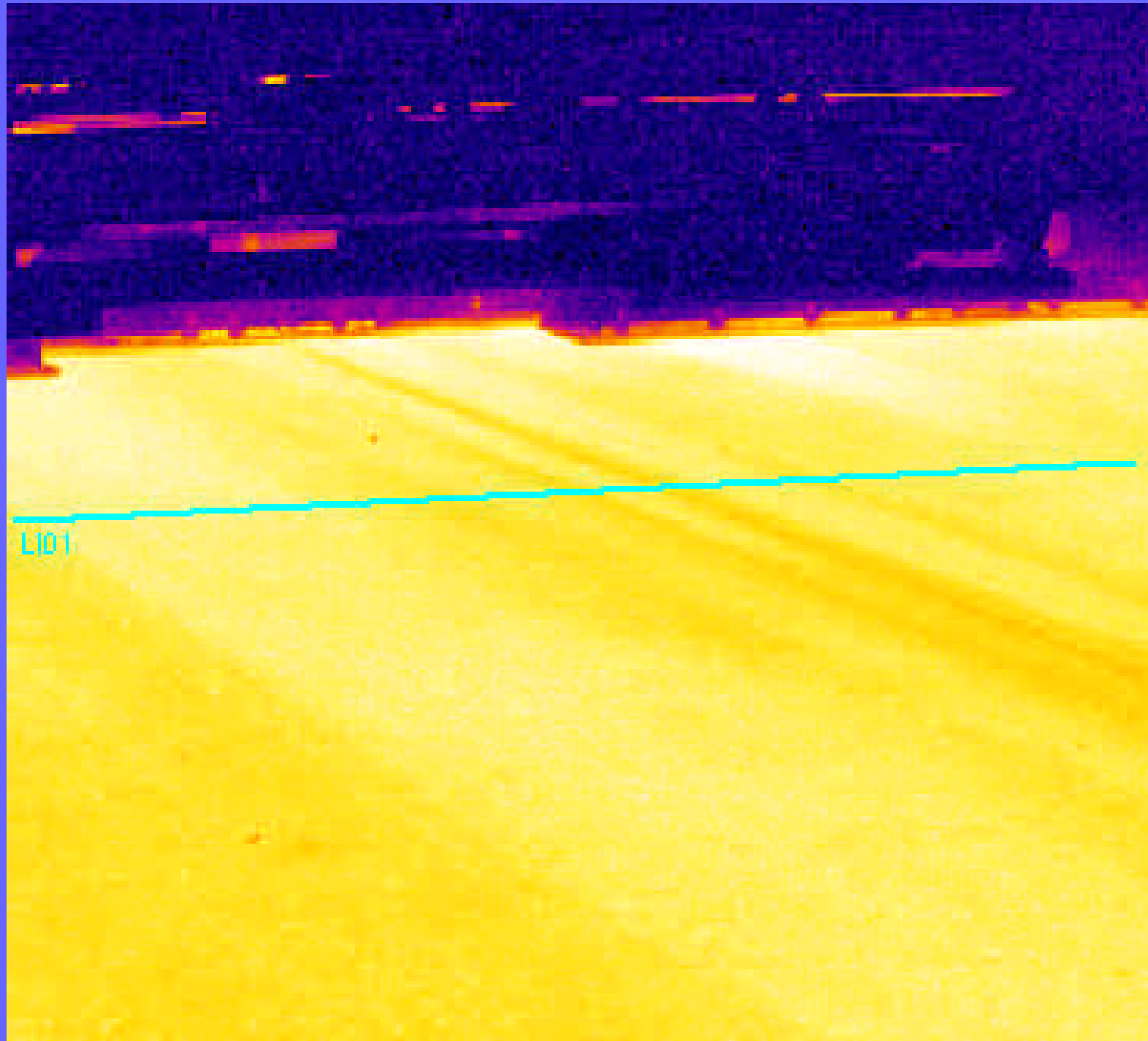


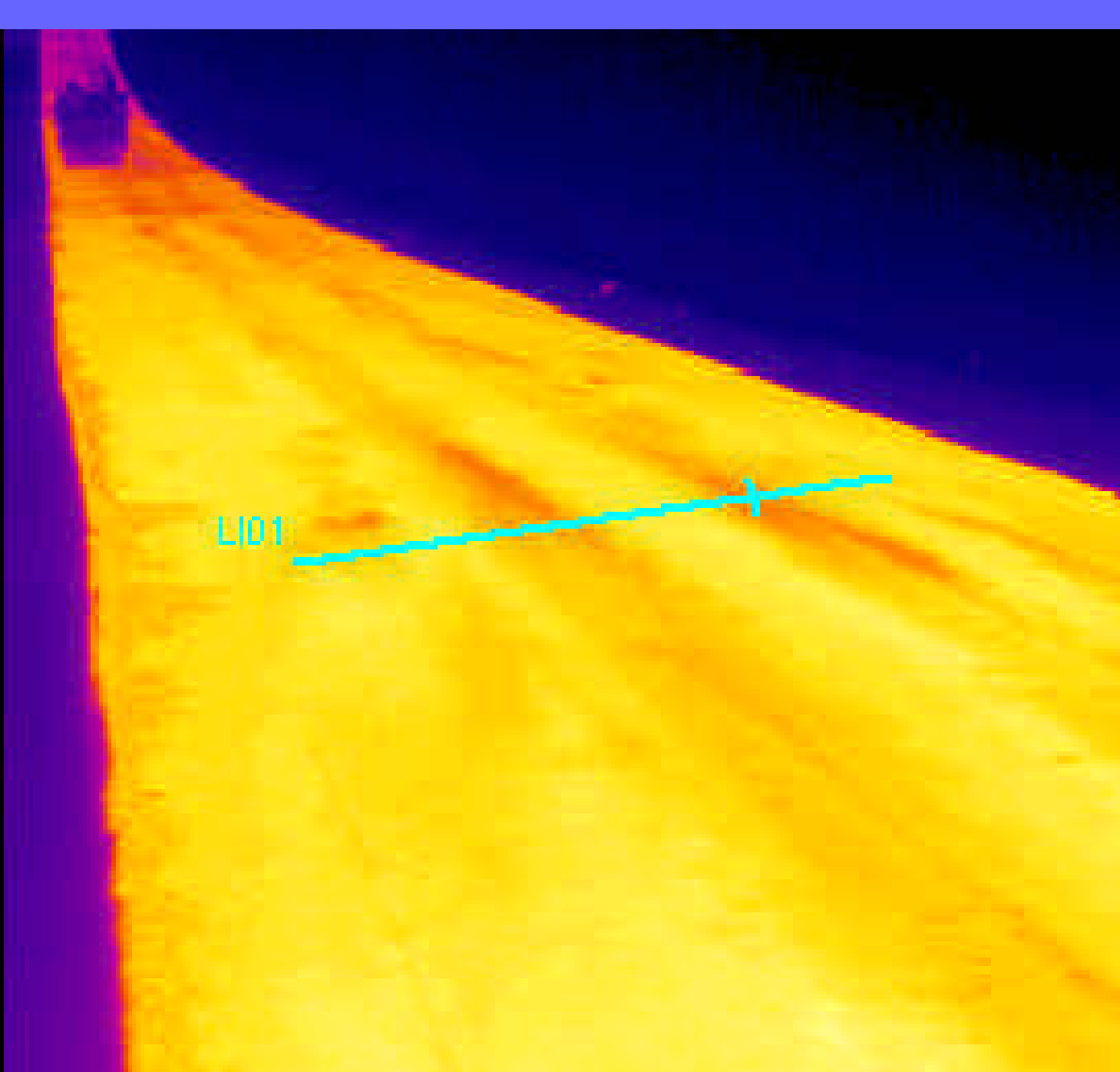
Analysis		Position	Obj. Par	Image				
Label	Temp.	Min	Max	Max - Min	Avg	Stdev	Expres...	Result
Image		*171.8	320.1	*148.4				
LI01		295.8	309.9	14.1	304.0	2.9		



Label	Cursor	Min	Max	Avg	Cursor X	Cursor Y
<input checked="" type="checkbox"/> LI01	-	295.8	309.9	304.0	-	-







264.3°F



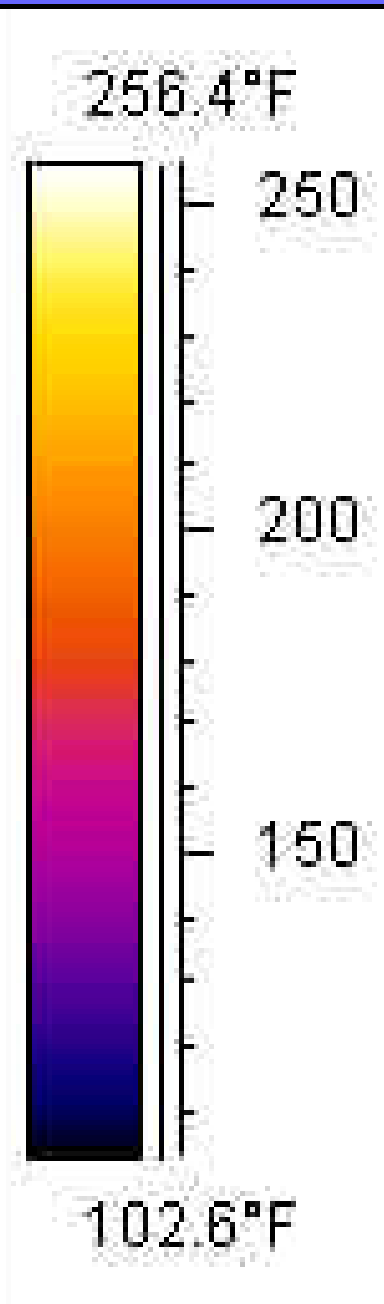
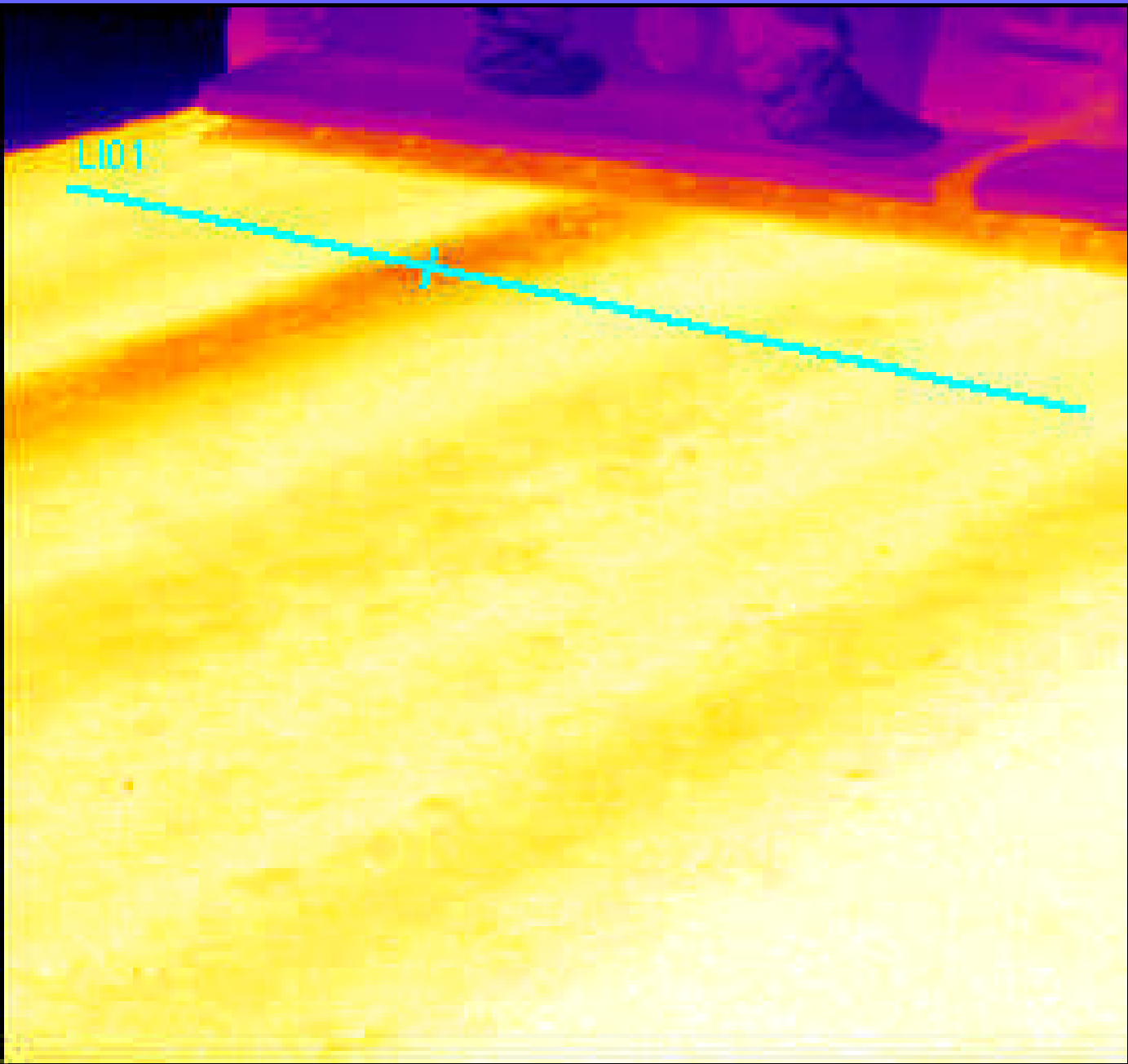
250

200

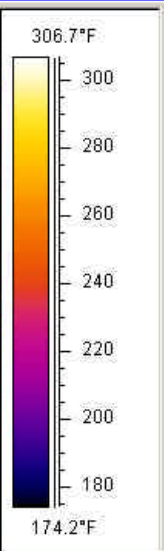
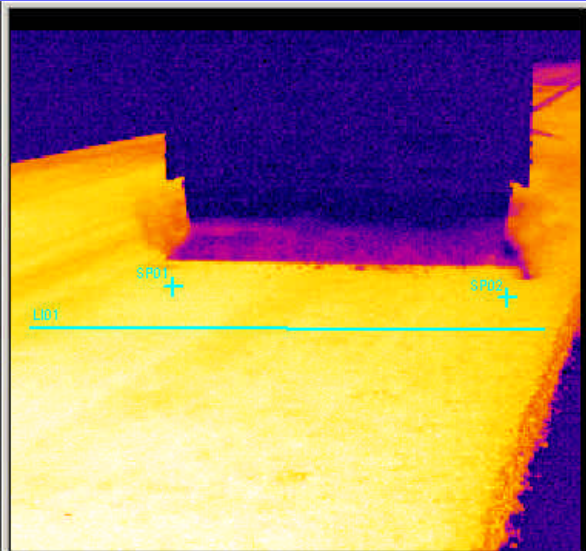
150

100

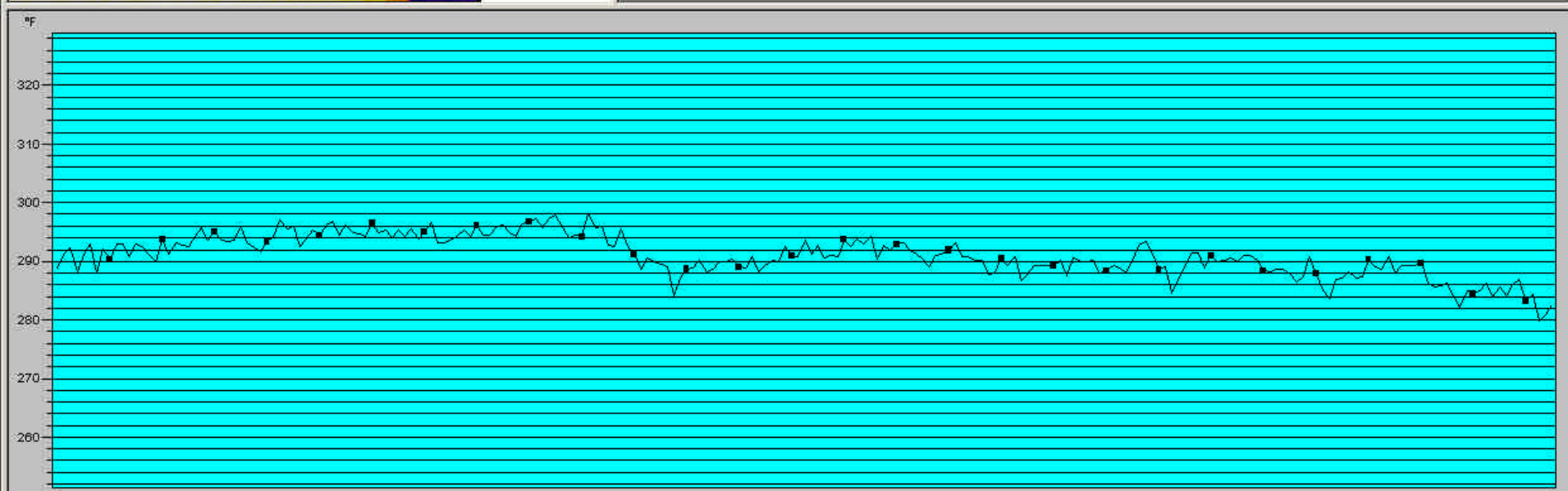
79.8°F





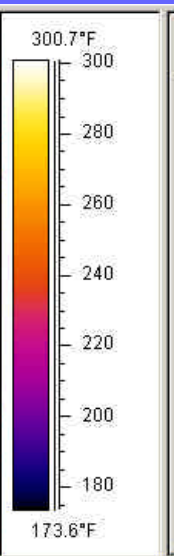
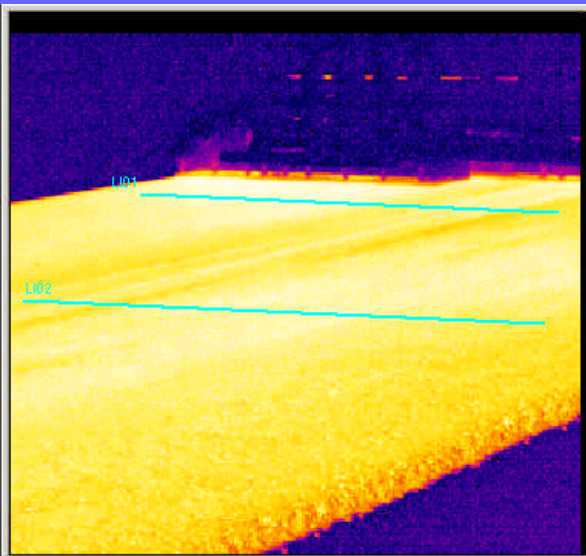


Analysis		Position	ϵ_r	Obj. Par	Image				
Label	Temp.	Min	Max	Max - Min	Avg	Stdev	Expres...	Result	
Image		*172.1	308.3	*136.3					
SP01	289.3								
SP02	284.1								
LI01		*279.9	298.0	18.1	*291.0	3.5			

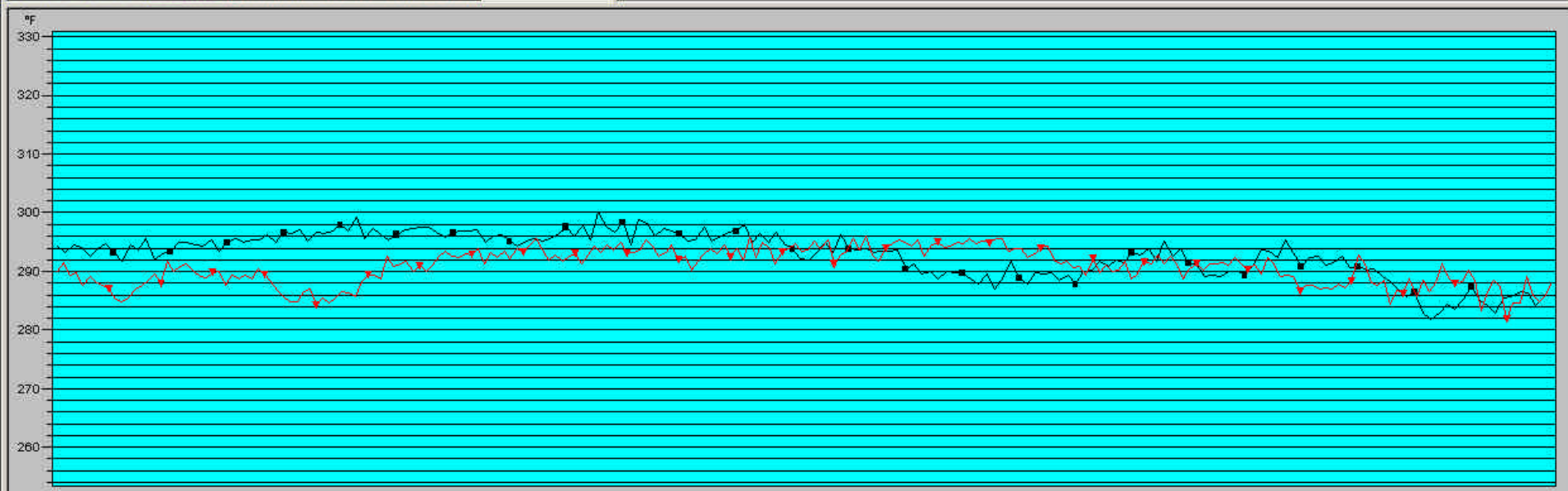


Label	Cursor	Min	Max	Avg	Cursor X	Cursor Y
<input checked="" type="checkbox"/> LI01	-	*279.9	298.0	*291.0	-	-



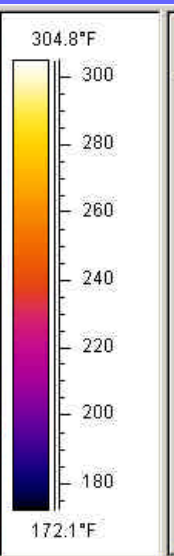
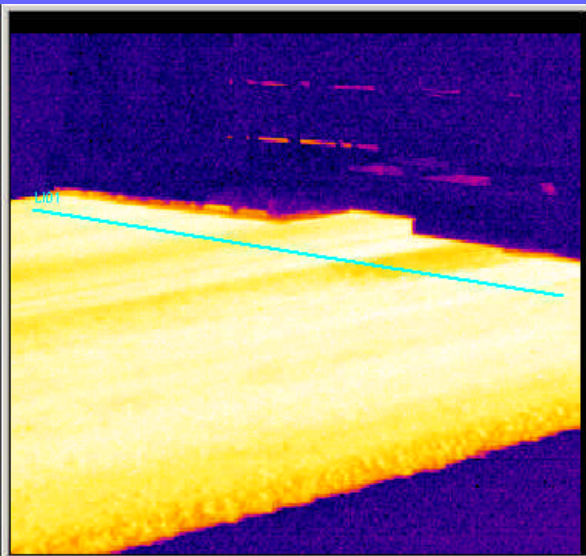


Analysis		Position	Obj. Par	Image				
Label	Temp.	Min	Max	Max - Min	Avg	Stdev	Expres...	Result
Image		*170.2	302.5	*132.3				
LI01		*282.0	300.0	18.1	*292.8	3.9		
LI02		*282.0	296.1	14.1	*290.8	3.1		

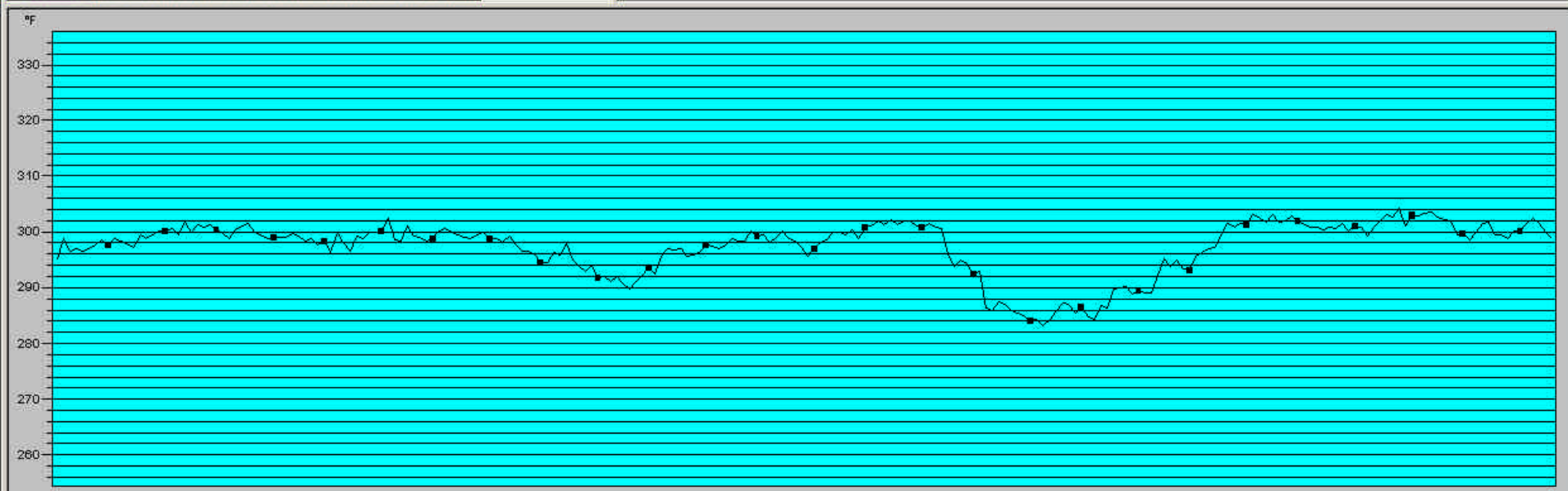


Label	Cursor	Min	Max	Avg	Cursor X	Cursor Y
<input checked="" type="checkbox"/> LI01	-	*282.0	300.0	*292.8	-	-
<input checked="" type="checkbox"/> LI02	-	*282.0	296.1	*290.8	-	-





Analysis		Position	Obj. Par	Image				
Label	Temp.	Min	Max	Max - Min	Avg	Stdev	Expres...	Result
Image		*169.5	306.4	*136.9				
LI01		*283.3	304.2	21.0	*297.3	4.8		



Label	Cursor	Min	Max	Avg	Cursor X	Cursor Y
<input checked="" type="checkbox"/> LI01	-	*283.3	304.2	*297.3	-	-









Northern Region Paving

- Richardson Highway-Badger Interchange
- Airport Way Frontage Roads
- Gravel to Pavement Project - Cordova
- Richardson Hwy MP 203-206

High Float Surface Treatments

- NRRST - Tanana Loop Extension
- NRRST - Mentasta Lake Road
- Steese Highway MP 44-53
- Nabesna Road Earthquake Repairs
- Tok Cutoff Earthquake Repairs
- Northway Road

What's New?

- Will be getting a lightweight profiler by Spring.
- Have acquired T&T machine.
- Regional lab building to be expanded.





Questions?