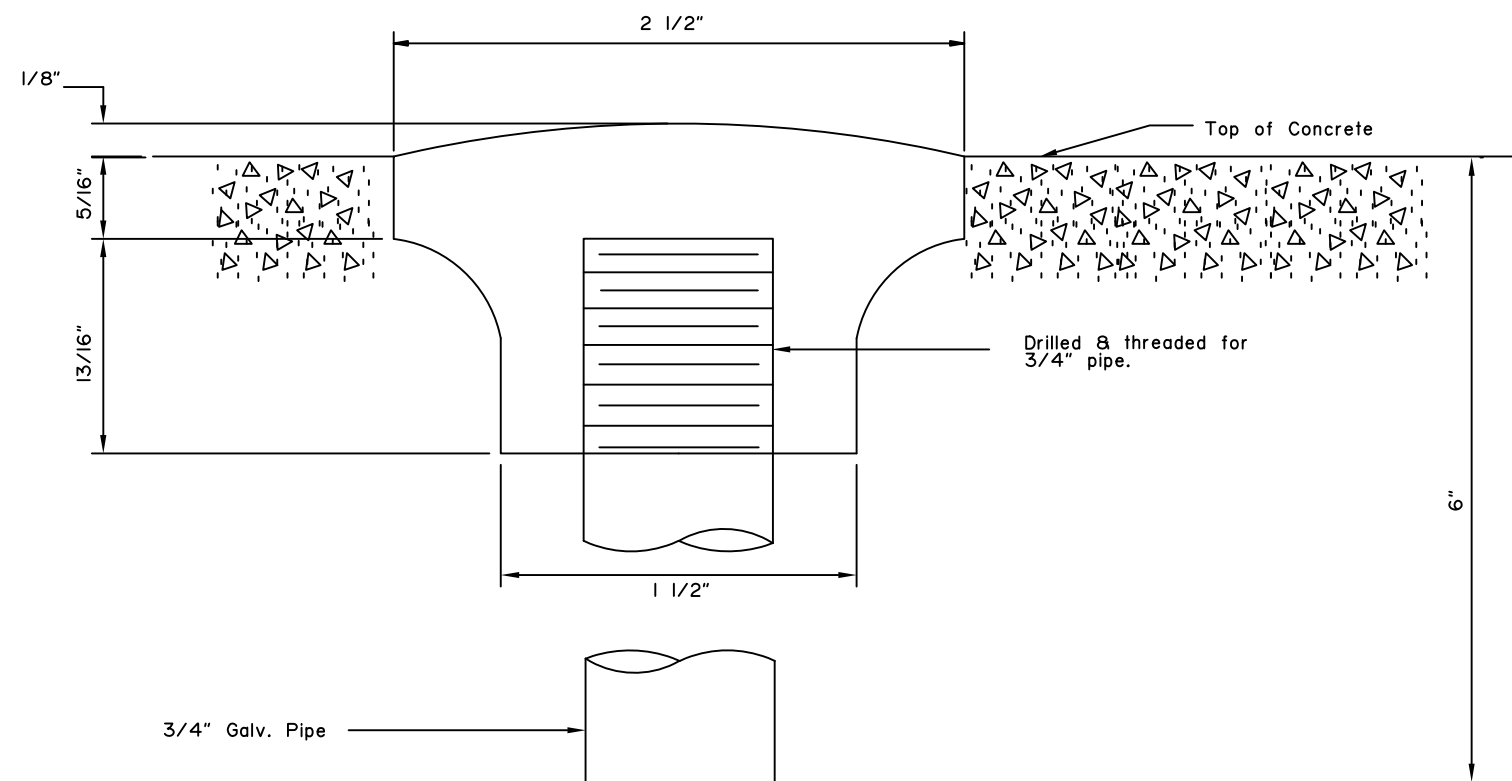


GENERAL NOTES:

1. For Structures under 200' total length: provide 1 monument.
2. For Structures 200' or over: provide 2 Monuments.
3. Monuments shall be located as directed by the Engineer.



SURVEY MONUMENT

State of Alaska DOT&PF  
ALASKA STANDARD PLAN

SURVEY MONUMENT

Adopted as an Alaska  
Standard Plan by: *Kenneth J. Fisher*  
Kenneth J. Fisher, P.E.  
Chief Engineer

Adoption Date: 02/08/2019

Last Code and Stds. Review  
By: Date:

Next Code and Standards Review date: 02/08/2029