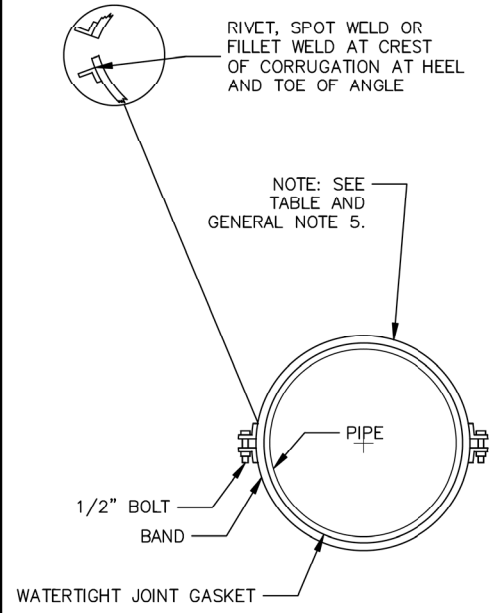
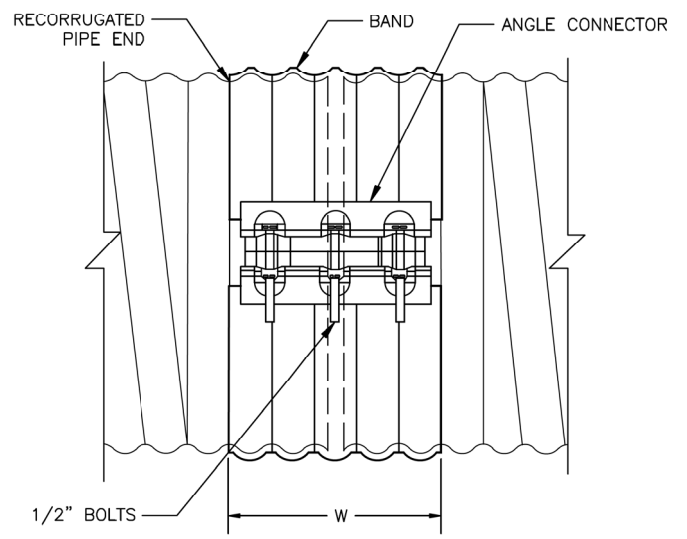


ANNULAR BAND				
BAND MATERIAL	PIPE DIA.	PIPE-ARCH SPAN x RISE (IN.)	BAND AND CONNECTOR WIDTH (W)	BOLT QUANTITY SEE NOTE 2
STEEL	12" - 30"	17x13 TO 35x24	12"	2
	36" - 72"	49x29 TO 83x57	24"	5/6, 10/12
	54" - 144" SEE NOTE 1	NOT APPROPRIATE		10/12, 15/18
ALUMINUM ALLOY	12" - 30"	17x13 TO 35x24	12"	3
	36" - 54"	42x29 TO 64x43	24"	5/6, 10/12
	36" - 96" SEE NOTE 1	NOT APPROPRIATE		

- ANNULAR BAND NOTES:**
- TYPICALLY 3" X 1" OR 5" X 1" CORRUGATION SIZES.
 - STACKED BOLT QUANTITY INDICATES NUMBER OF BOLTS FOR ANGLE CONNECTORS THAT ARE ONE OR TWO PIECED. EX 5/6 USES 5 BOLTS FOR SINGLE ANGLE OR 6 BOLTS TOTAL FOR TWO PIECE ANGLE.
 - 8" CONNECTOR MAY BE USED WITH A 12" BAND ON 12"-30" STEEL PIPES.
 - NEOPRENE GASKET 12" WIDE X 3/8" THICK.
 - BOLTS ARE 1/2" X 6" MIN, 1/2" X 8" PREFERRED.



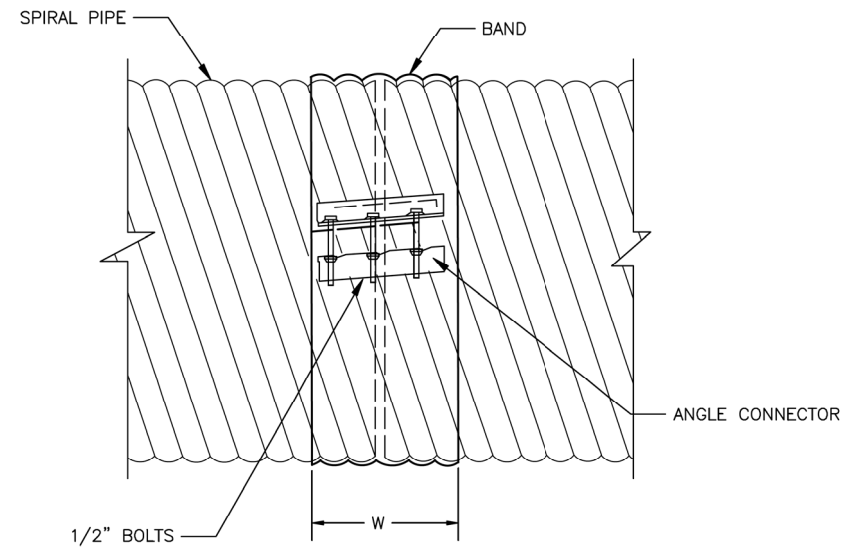
ANGLE CONNECTOR DETAIL



ANNULAR BAND

SPIRAL/HELICAL ANGLE BAND			
BAND MATERIAL	PIPE DIA.	BAND AND CONNECTOR WIDTH (W)	BOLT QUANTITY SEE NOTE 2
STEEL	12" - 30"	12"	3/6
	36" - 144" SEE NOTE 1	24"	5/6, 10/12, 15/18
ALUMINUM ALLOY	12" - 30"	12"	3/6
	36" - 54"	12"	5/6, 10/12
	36" - 96" SEE NOTE 1	24"	5/6, 10/12

- SPIRAL BAND NOTES:**
- TYPICALLY 3" X 1" OR 5" X 1" CORRUGATION SIZES.
 - STACKED BOLT QUANTITY INDICATES NUMBER OF BOLTS FOR ANGLE CONNECTORS THAT ARE ONE OR TWO PIECED. EX 5/6 USES 5 BOLTS FOR SINGLE ANGLE OR 6 BOLTS TOTAL FOR TWO PIECE ANGLE.
 - NEOPRENE GASKET 12" WIDE X 3/8" THICK.
 - BOLTS ARE 1/2" X 6" MIN, 1/2" X 8" PREFERRED.



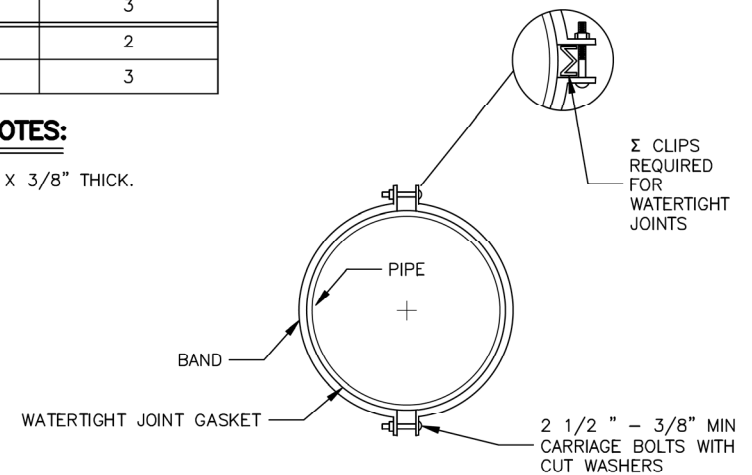
SPIRAL BAND

CORRUGATED BANDS

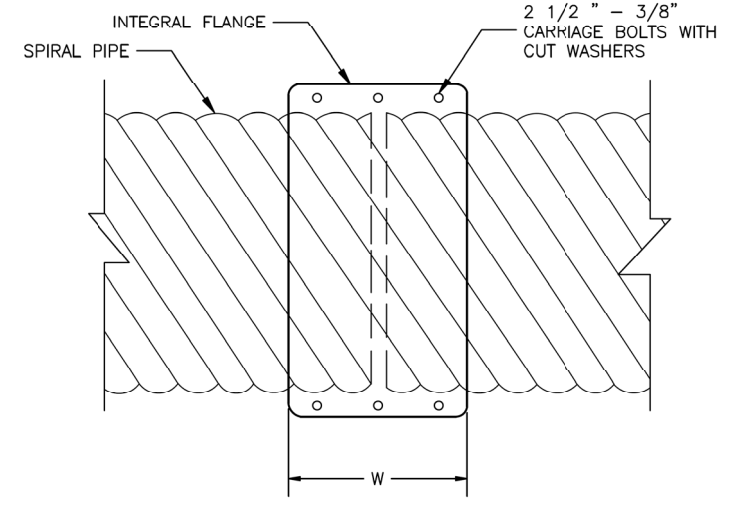
N.T.S.

SPIRAL/HELICAL BIAS BAND			
BAND MATERIAL	PIPE DIA.	BAND AND CONNECTOR WIDTH (W)	BOLT QUANTITY
STEEL	6" - 10"	7"	2
	12" - 18"	12"	3
ALUMINUM ALLOY	6" - 10"	7"	2
	12" - 18"	12"	3

- 2-PIECE BIAS BAND NOTES:**
- NEOPRENE GASKET 7" WIDE X 3/8" THICK.



BIAS BAND END VIEW




2-PIECE BIAS BAND

GENERAL NOTES:

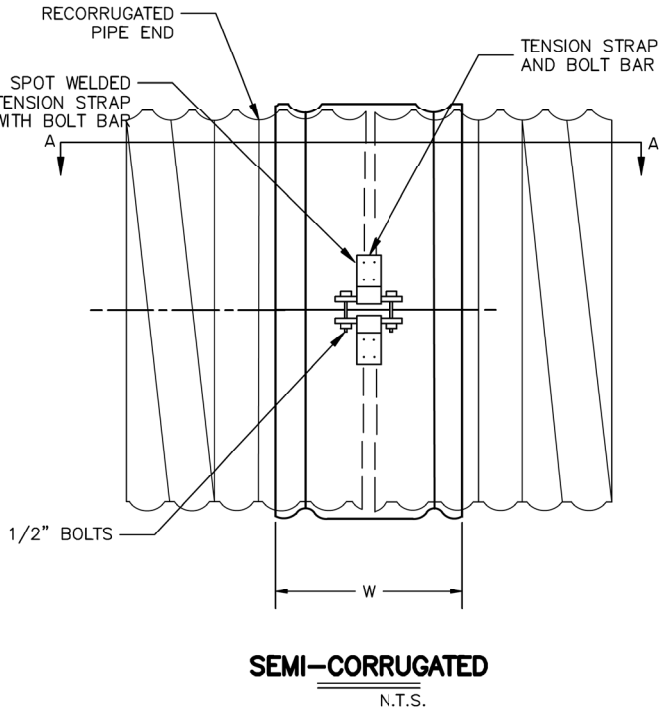
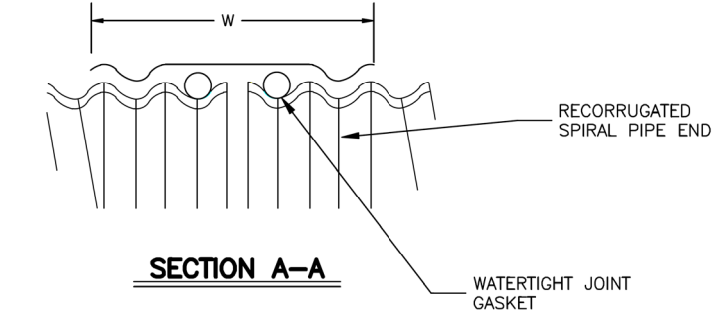
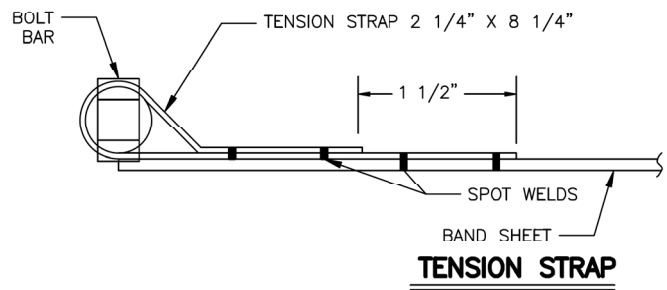
- ALL MATERIAL AND WORKMANSHIP SHALL BE IN ACCORDANCE WITH THE STATE OF ALASKA, STANDARD SPECIFICATIONS FOR HIGHWAY CONSTRUCTION, AND THE PROJECT SPECIAL PROVISIONS.
- ALL NEOPRENE GASKETS ARE STRIP TYPE OR BUTT-CEMENTED OR VULCANIZED SLEEVE TYPE. MATERIAL MEETS ASTM SPECIFICATION D 1056, TYPE 2 (CLOSED CELL SPONGE), CLASS D, GRADE 3. O-RING GASKETS TO MEET SPECIFICATION ASTM C-443.
- BAND ANGLE LENGTH IS NOMINAL AND IS GIVEN TO THE NEAREST INCH OF LENGTH. LENGTH OVER 12" MAY CONSIST OF MULTIPLE ANGLES OF SHORTER LENGTH.
- BOLT QUANTITY VARIES WITH BAND WIDTH, DIAMETER, CONNECTION HARDWARE TYPE, AND NUMBER OF BAND SEGMENTS.
- PROVIDE ONE-PIECE ANGLE CONNECTOR THRU 42" DIAMETER, 2-PIECE ANGLE CONNECTORS FOR DIAMETERS 48" THRU 90", AND THREE-PIECE ANGLE CONNECTORS FOR DIAMETERS 96" THRU 144", OR AS OTHERWISE REQUESTED.

State of Alaska DOT&PF
ALASKA STANDARD PLAN
**BAND COUPLER AND
HARDWARE SCHEDULE**

Adopted as an Alaska Standard Plan by: 
Lauren Little, P.E.
Interim Chief Engineer
Adoption Date: 01/29/2024

Last Code and Stds. Review
By: BMM Date: 12/13/2023
Next Code and Standards Review Date: 12/13/2033

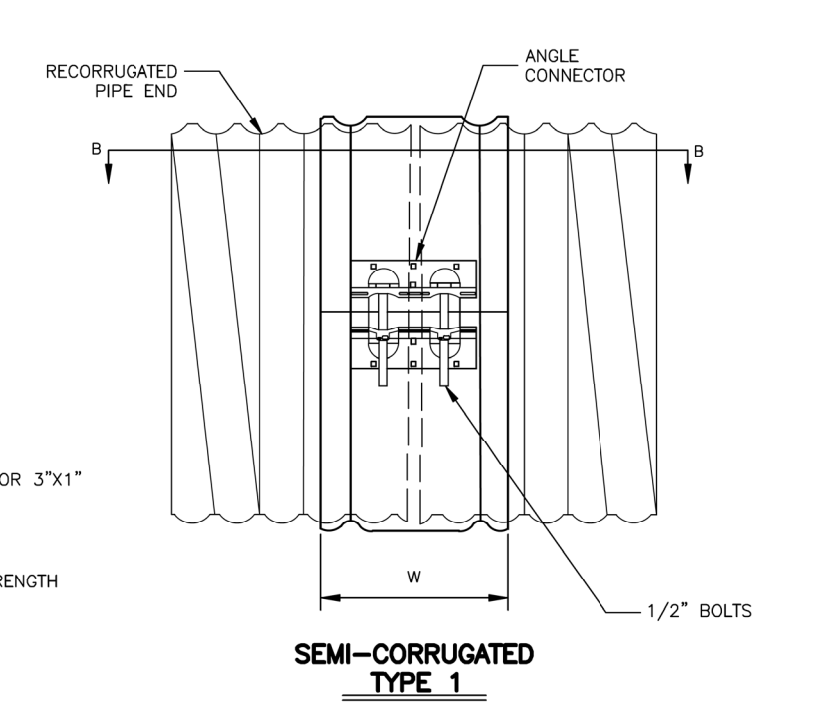
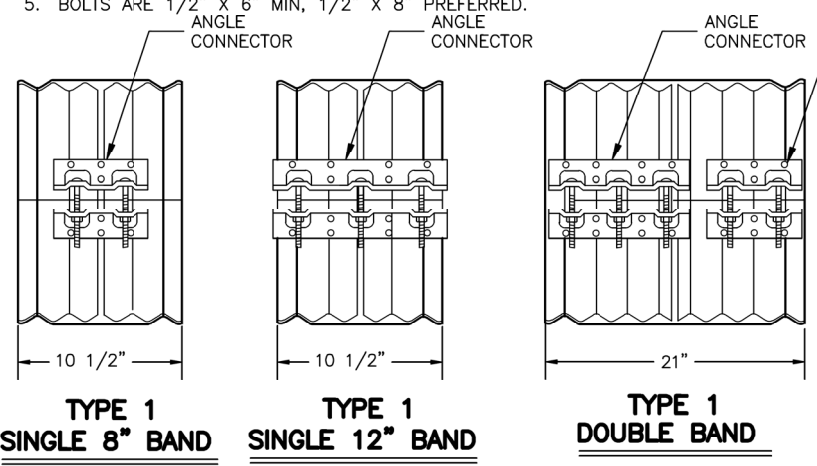
D-08.00



- SEMI-CORRUGATED BAND NOTES:**
1. ANNULAR PIPE WIDTH 2 2/3" X 1/2" CORRUGATIONS WIDTH IS 13 3/8", FOR 3"x1" CORRUGATIONS WIDTH IS 14 3/4"
 2. BOLTS ARE 1/2" X 6" MIN, 1/2" X 8" PREFERRED.
 3. ALTERNATE DESIGNS OF TENSIONS STRAPS ARE PERMISSIBLE IF TENSILE STRENGTH EXCEEDS 7500 LBS.

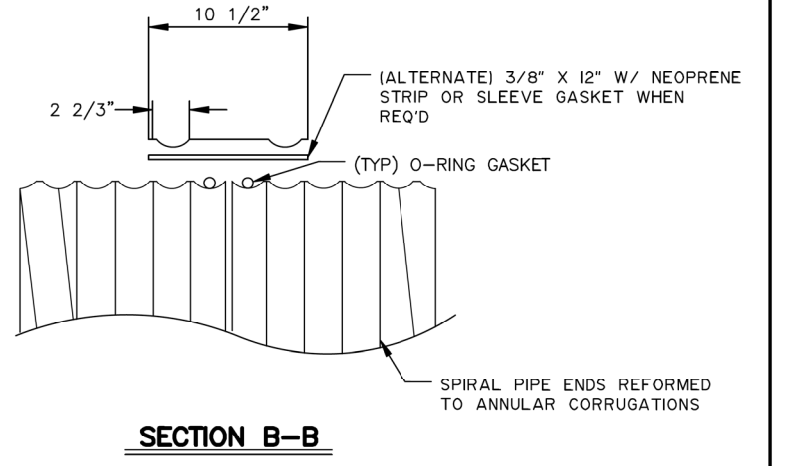
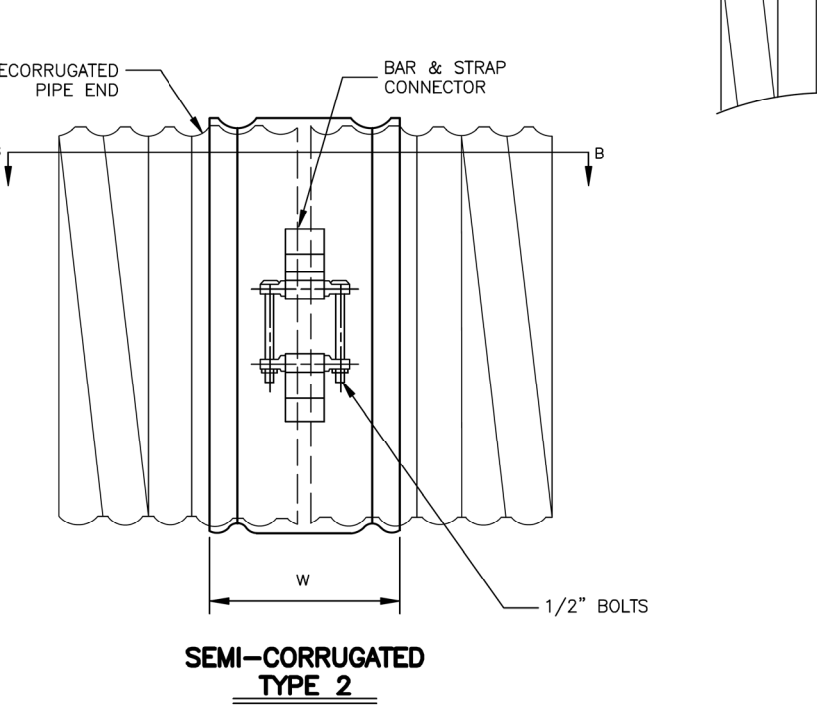
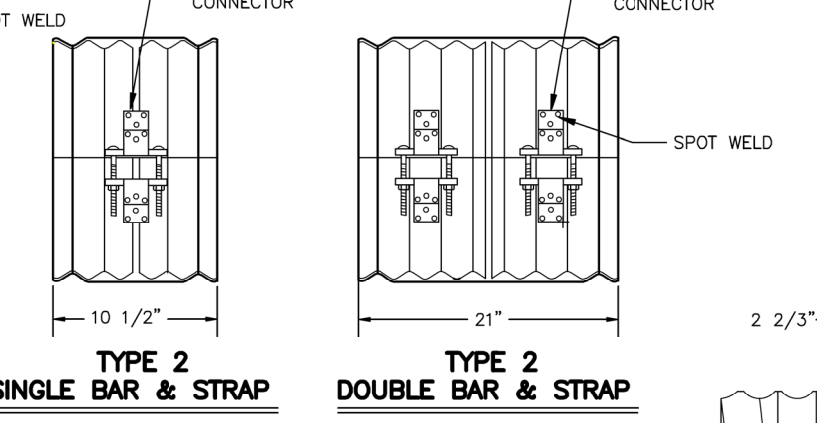
TYPE 1 BAND					
BAND MATERIAL	PIPE DIA.	PIPE-ARCH SPAN x RISE (IN.)	BAND WIDTH (W)	CONNECTOR WIDTH (W)	BOLT QUANTITY SEE NOTE 2
STEEL	12" - 30"	17x13 TO 35x24	10 1/2"	8"	2/4
	36" - 72"	49x29 TO 83x57	21"	20"	5/10
	54" - 144" SEE NOTE 1	NOT APPROPRIATE			10/15
ALUMINUM ALLOY	12" - 30"	17x13 TO 35x24	10 1/2"	8"	2/4
	36" - 54"	42x29 TO 64x43	21"	20"	5/6, 10/12
	54" - 96" SEE NOTE 1	NOT APPROPRIATE			

- TYPE 1 BAND NOTES:**
1. TYPICALLY 3" X 1" OR 5" X 1" CORRUGATION SIZES.
 2. STACKED BOLT QUANTITY INDICATES NUMBER OF BOLTS FOR ANGLE CONNECTORS THAT ARE ONE OR TWO PIECED. EX 2/4 USES 2 BOLTS FOR SINGLE ANGLE OR 4 BOLTS TOTAL FOR TWO PIECE ANGLE.
 3. NEOPRENE GASKET 12" WIDE X 3/8" THICK.
 4. O-RING GASKETS (APPLICABLE TO STEEL ONLY) ARE 13/16" FOR BANDS WITH PIPE DIAMETER THROUGH 72", AND 7/8" FOR PIPES WITH PIPE DIAMETER OVER 72".
 5. BOLTS ARE 1/2" X 6" MIN, 1/2" X 8" PREFERRED. ANGLE CONNECTOR



TYPE 2 BAND					
BAND MATERIAL	PIPE DIA.	PIPE-ARCH SPAN x RISE (IN.)	BAND WIDTH (W)	CONNECTOR WIDTH (W)	BOLT QUANTITY SEE NOTE 2
STEEL	12" - 30"	17x13 TO 35x24	10 1/2"	2.25"	2/4
	36" - 72"	49x29 TO 83x57	21"	2.25"x2"	4/8
	54" - 144" SEE NOTE 1	NOT APPROPRIATE			8/12
ALUMINUM ALLOY	12" - 30"	17x13 TO 35x24	10 1/2"	2.25"	2/4
	36" - 54"	42x29 TO 64x43	21"	2.25"x2"	5/6, 10/12
	54" - 96" SEE NOTE 1	NOT APPROPRIATE			

- TYPE 2 BAND NOTES:**
1. TYPICALLY 3" X 1" OR 5" X 1" CORRUGATION SIZES.
 2. STACKED BOLT QUANTITY INDICATES NUMBER OF BOLTS FOR ANGLE CONNECTORS THAT ARE ONE OR TWO PIECED. EX 2/4 USES 2 BOLTS FOR SINGLE ANGLE OR 4 BOLTS TOTAL FOR TWO PIECE ANGLE.
 3. NEOPRENE GASKET 12" WIDE X 3/8" THICK.
 4. O-RING GASKETS (APPLICABLE TO STEEL ONLY) ARE 13/16" FOR BANDS WITH PIPE DIAMETER THROUGH 72", AND 7/8" FOR PIPES WITH PIPE DIAMETER OVER 72".
 5. BOLTS ARE 1/2" X 6" MIN, 1/2" X 8" PREFERRED. BAR & STRAP CONNECTOR



SEMI-CORRUGATED BANDS (TYPE 1 & 2)
N.T.S.

State of Alaska DOT&PF
ALASKA STANDARD PLAN

**BAND COUPLER AND
HARDWARE SCHEDULE**

Adopted as an Alaska Standard Plan by:
Lauren Little, P.E.
Interim Chief Engineer

Adoption Date: 01/29/2024

Last Code and Stds. Review
By: BMM Date: 12/13/2023

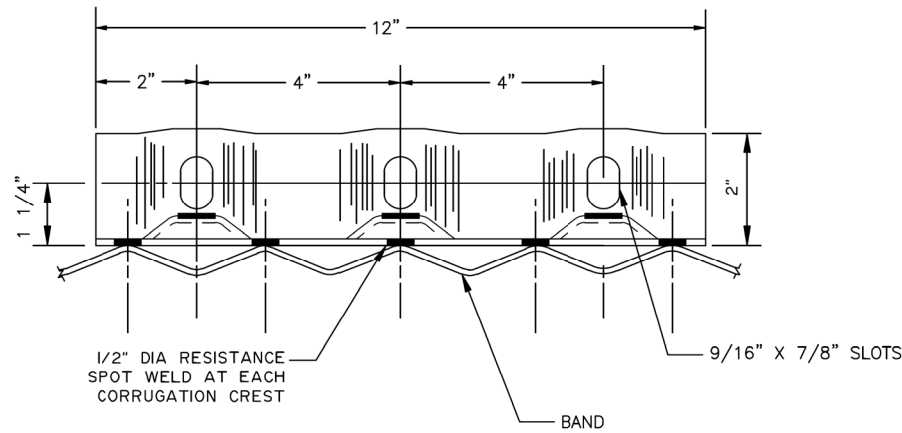
Next Code and Standards Review Date: 12/13/2033

D-08.00

DIMPLE BAND				
BAND MATERIAL	PIPE DIA.	PIPE ARCH SPAN x RISE (IN.)	BAND AND CONNECTOR WIDTH (W)	BOLT QUANTITY SEE NOTE 2
STEEL	12" - 30"	17x13 TO 35x24	12"	3/6
	36" - 72"	49x29 TO 83x57	24"	5/6, 10/12
	54" - 144" SEE NOTE 1	42x29 TO 171x110		10/12, 15/18
ALUMINUM ALLOY	12" - 30"	17x13 TO 35x24	12"	3/6
	36" - 54"	42x29 TO 64x43	24"	5/6, 10/12
	36" - 96" SEE NOTE 1	60x46 TO 112x75		

DIMPLE BAND NOTES:

1. TYPICALLY 3" X 1" OR 5" X 1" CORRUGATION SIZES.
2. STACKED BOLT QUANTITY INDICATES NUMBER OF BOLTS FOR ANGLE CONNECTORS THAT ARE ONE OR TWO PIECED. EX 3/6 USES 3 BOLTS FOR SINGLE ANGLE OR 6 BOLTS TOTAL FOR TWO PIECE ANGLE.
3. DIMPLE BANDS ARE RESTRICTED TO JOINING FIELD CUT PIPE, EXTENSIONS OF EXISTING PIPE WITH SPIRAL ENDS, AND 3X1 OR 5X1 CORRUGATION PIPE-ARCHES.
4. NEOPRENE GASKET 12" WIDE X 3/8" THICK EXCEPT 1" THICK REQUIRED ON SPIRAL ENDS WITH 1" DEEP CORRUGATIONS.

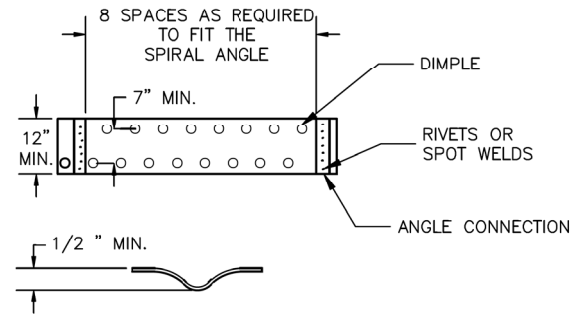


SIDE VIEW

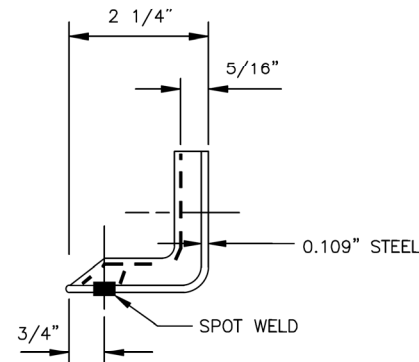
ROD AND LUG BAND				
CORRUGATION	PIPE DIA.	BAND WIDTH (W)	ROD DIAMETER (IN.)	ROD QUANTITY SEE NOTE 2
2 3/4" x 1/2"	12" - 21"	12"	3/8"	2
	24" - 54"	12" OR 24"	1/2"	2/4
	60" - 84"	12" OR 24"	5/8"	2/4
3" x 1"	36" - 54"	14" OR 26"	1/2"	2/4
	60" - 84"	14" OR 26"	5/8"	2/4
	84" - 120"	26"	5/8"	4

ROD AND LUG NOTES:

1. PROVIDE WIDER BAND UNLESS OTHERWISE SPECIFIED.
2. STACKED ROD QUANTITY INDICATES NUMBER OF RODS FOR NARROW OR WIDE BANDS. EX 2/4 USES 2 RODS FOR NARROW BAND OR 4 RODS TOTAL FOR WIDE BANDS.



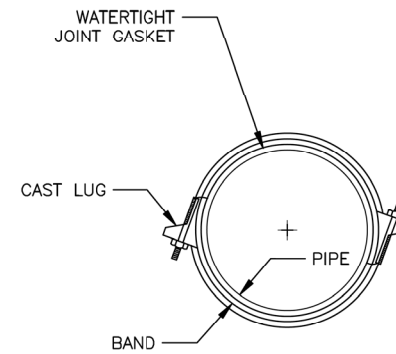
DIMPLE SECTION



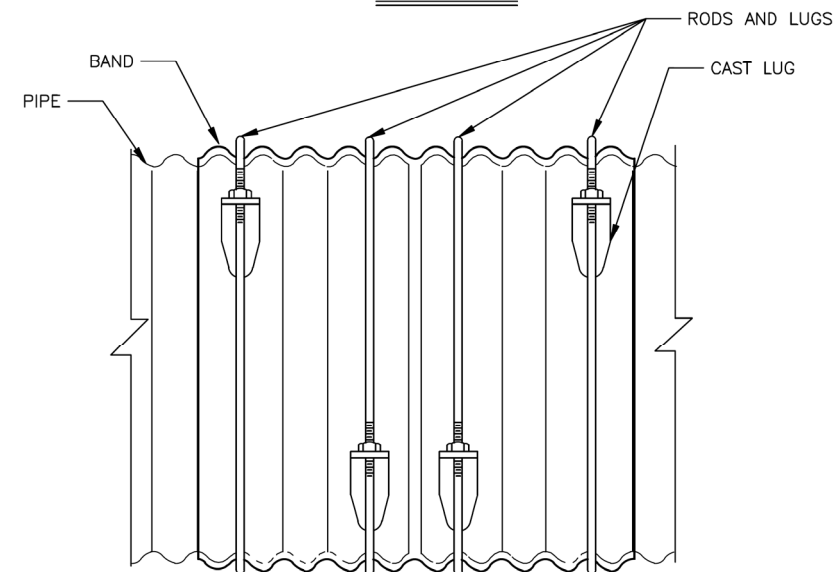
END VIEW

ANGLE CONNECTION DETAILS

N.T.S.

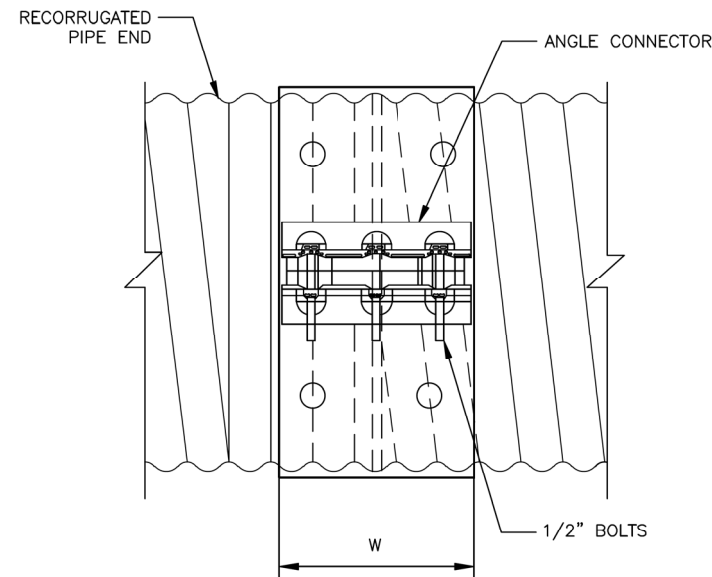


END VIEW



ROD AND LUG BAND DETAILS

N.T.S.



DIMPLE BAND DETAILS

N.T.S.

State of Alaska DOT&PF
ALASKA STANDARD PLAN
**BAND COUPLER AND
HARDWARE SCHEDULE**

Adopted as an Alaska Standard Plan by:

Lauren Little, P.E.
Interim Chief Engineer

Adoption Date: 01/29/2024

Last Code and Stds. Review
By: BMM Date: 12/13/2023

Next Code and Standards Review Date: 12/13/2033