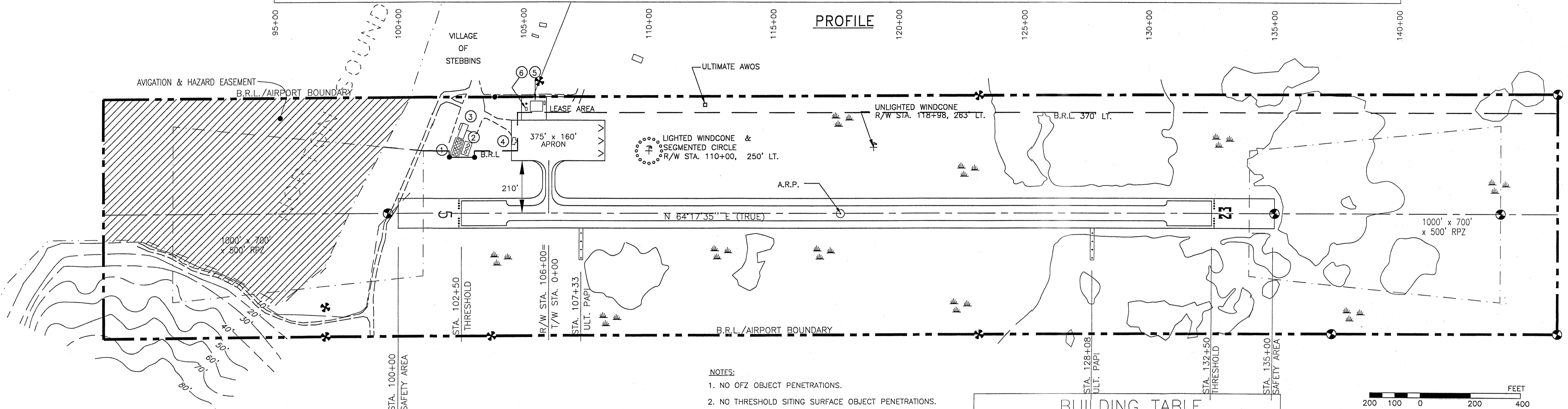
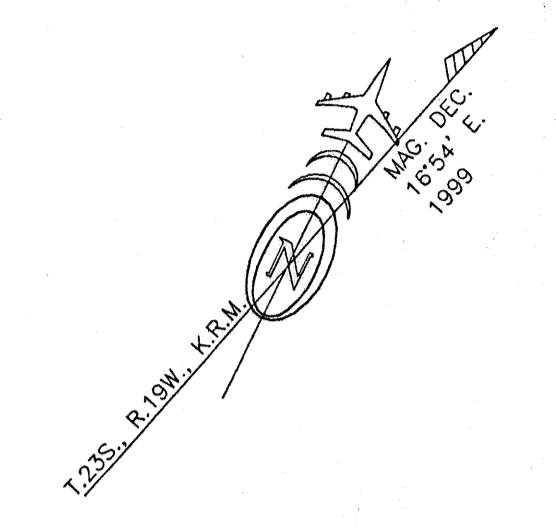
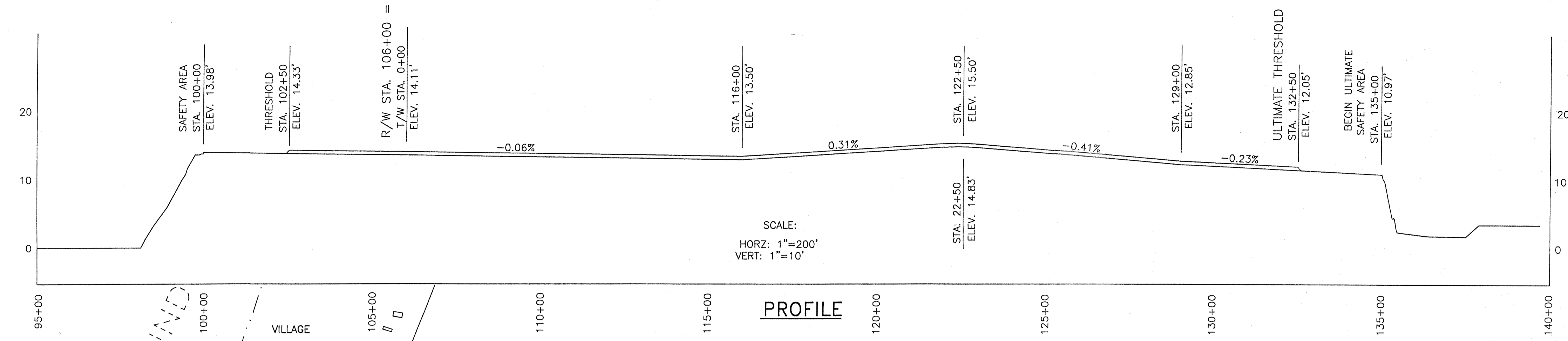


WIND DATA
 PILOT REPORTS ARE THE ONLY SOURCE OF WIND DATA AVAILABLE. THE REPORTS INDICATE THAT THE RUNWAY HAS GOOD WIND COVERAGE.

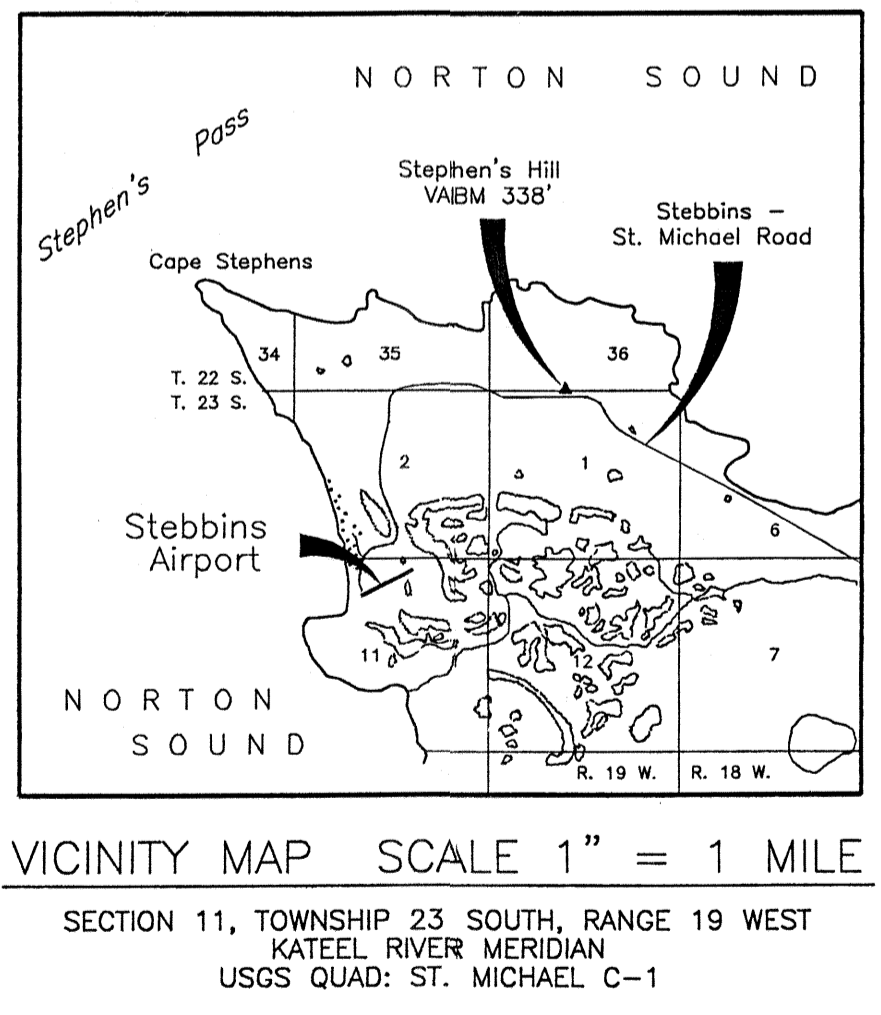
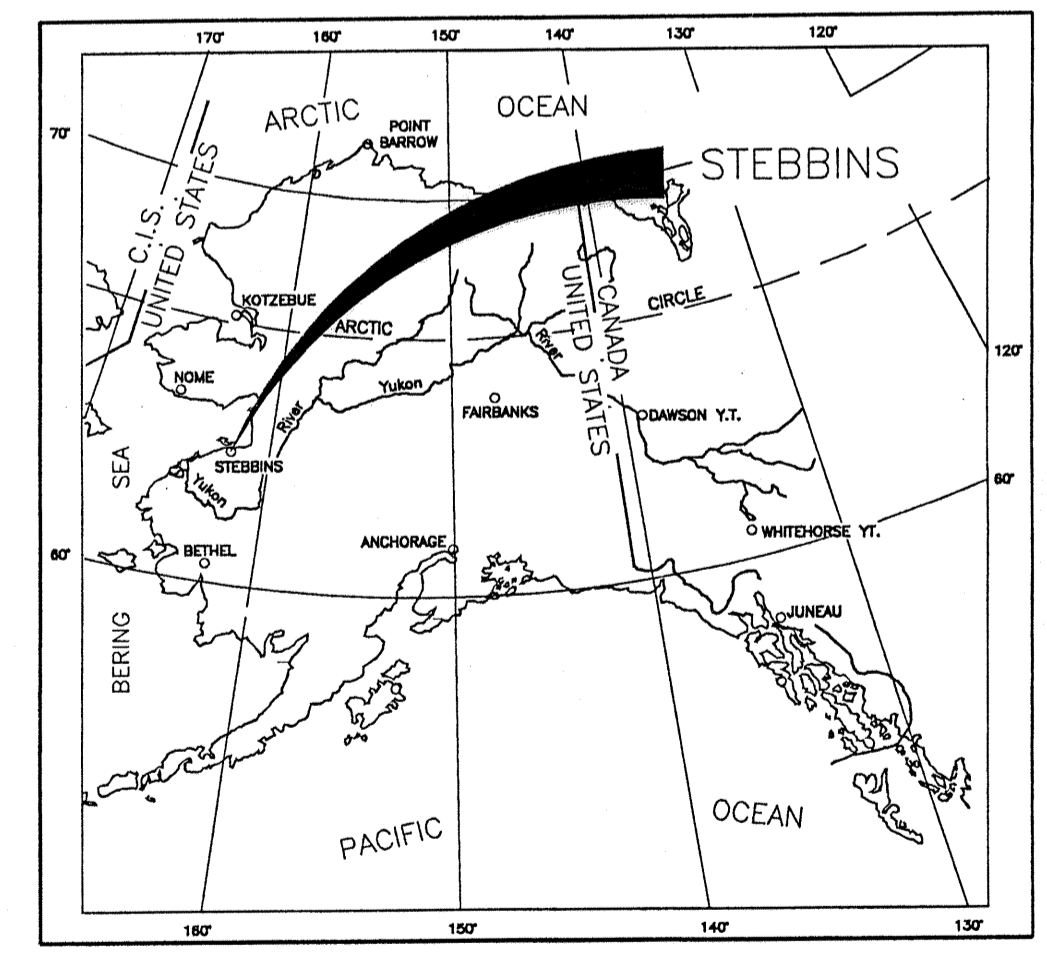


- NOTES:
1. NO OFZ OBJECT PENETRATIONS.
 2. NO THRESHOLD SITING SURFACE OBJECT PENETRATIONS.
 3. THE GEODETIC COORDINATES WERE DERIVED BY CONTROLLED GPS WORK DONE BY LCMF INC. IN OCTOBER OF 1998.
 4. DATA BASE CONTROL YEAR: NAD 83.

BUILDING NAME	ELEVATION	REMARKS
① LOG CABIN (TO BE REMOVED)	28.8'	
② AVEC FUEL TANKS	29.4'	
③ AVEC GENERATOR ENCLOSURE	32.9'	
④ TERMINAL BUILDING	32.3'	
⑤ SNOW REMOVAL EQUIPMENT BUILDING	38.0'±	
⑥ ELECTRICAL EQUIPMENT ENCLOSURE	23.2'±	NO PENETRATIONS

	EXISTING	ULTIMATE
AIRPORT REFERENCE CODE	B-1	SAME
AIRPORT ELEVATION (M.S.L.)	15.5'	SAME
NAVIGATION AIDS	ROT. BEACON	BEACON/GPS
RAMP LIGHTING	NONE	SAME
TAXIWAY LIGHTING	MITL	SAME
MEAN DAILY MAX. TEMP. HOTTEST MONTH (JULY)	60.9'	SAME
AIRPORT REFERENCE POINT (A.R.P.)	63°30'57.50"N 162°16'40.78"W	
R/W 5 THRESHOLD STA. 102+50	LAT. 63°30'51.09"N LONG. 162°17'10.57"W	
R/W 23 THRESHOLD STA. 132+50	LAT. 63°31'03.90"N LONG. 162°16'10.98"W	

	EXISTING	ULTIMATE
PROPERTY LINE	---	SAME
BUILDING RESTRICTION LINE (B.R.L.)	--- B.R.L. ---	SAME
AIRPORT REFERENCE POINT	⊙	SAME
ROTATING BEACON	⊛	SAME
BUILDINGS	▭	SAME
ROADWAYS	==	SAME
THRESHOLD LIGHTING	---	SAME
WIND CONE (LIGHTED)	⊕	SAME
WIND CONE (UNLIGHTED)	⊕	SAME
ELEVATION CONTOURS	~	SAME
TUNDRA/MARSHLANDS	⊕	SAME
OBJECT FREE AREA (O.F.A.)	---	SAME
B.L.M. MONUMENT	⊕	SAME
PRIMARY MONUMENT	⊕	SAME
SECONDARY MONUMENT	⊕	SAME
PAPI	---	SAME



	EXISTING	ULTIMATE
RUNWAY 5 / 23		
% WIND COVERAGE	NO DATA	SAME
RUNWAY SURFACE TYPE	AGGREGATE	SAME
APPROACH VISIBILITY MINIMUM	≥ 1 MILE	SAME
APPROACH SURFACES	20:1	SAME
RUNWAY LIGHTING	MIRL	SAME
RUNWAY MARKING	NONE	SAME
VISUAL APPROACH AIDS	NONE	PAPI
COMMUNICATION AIDS	NONE	SAME
RUNWAY SAFETY AREA	120'x3500'	SAME
RUNWAY DIMENSION	60'x3000'	SAME
R/W OBJECT FREE AREA	400'x3480'	SAME
R/W OBSTACLE FREE ZONE	250'x3400'	SAME
TAXIWAY WIDTH	25'	SAME
TAXIWAY SAFETY AREA	50'	SAME
TAXIWAY OFA	89'	SAME

DESIGN_PKS		
DRAWN_CAT		
CHECKED_CML		
CAT	7/13/99	AS-BUILT & UPDATED PER CHG. 5
BY	DATE	REVISIONS

STATE OF ALASKA
 DEPARTMENT OF TRANSPORTATION AND PUBLIC FACILITIES
 NORTHERN REGION-WESTERN DISTRICT-DESIGN & CONSTRUCTION-AVIATION

APPROVED
Patricia D. Miller DATE 7/26/00
 PATRICIA D. MILLER, P.E. DESIGN GROUP CHIEF

Revised AIRPORT LAYOUT PLAN APPROVED
 BY LETTER DATED: 11-29-00
David S. Stelling

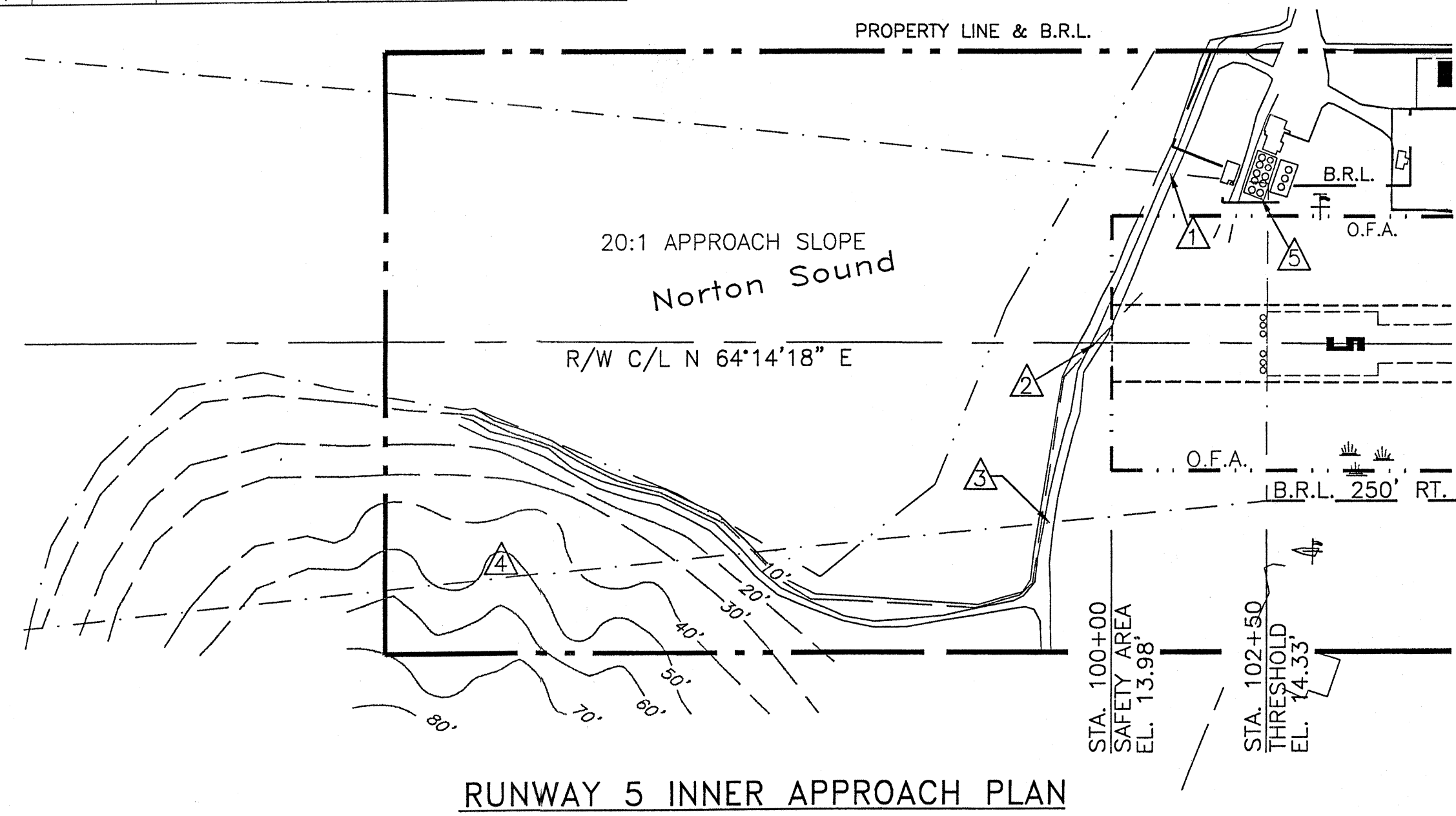
AIRPORTS DIVISION,
 ALASKAN REGION, AAL-620
 Airspace# 94AAL-113NRA

revised
 THIS ALP SUPERSEDES ALP DATED 2/29/96.
 IT IS BASED ON AS-BUILTS DATED 12/12/96.

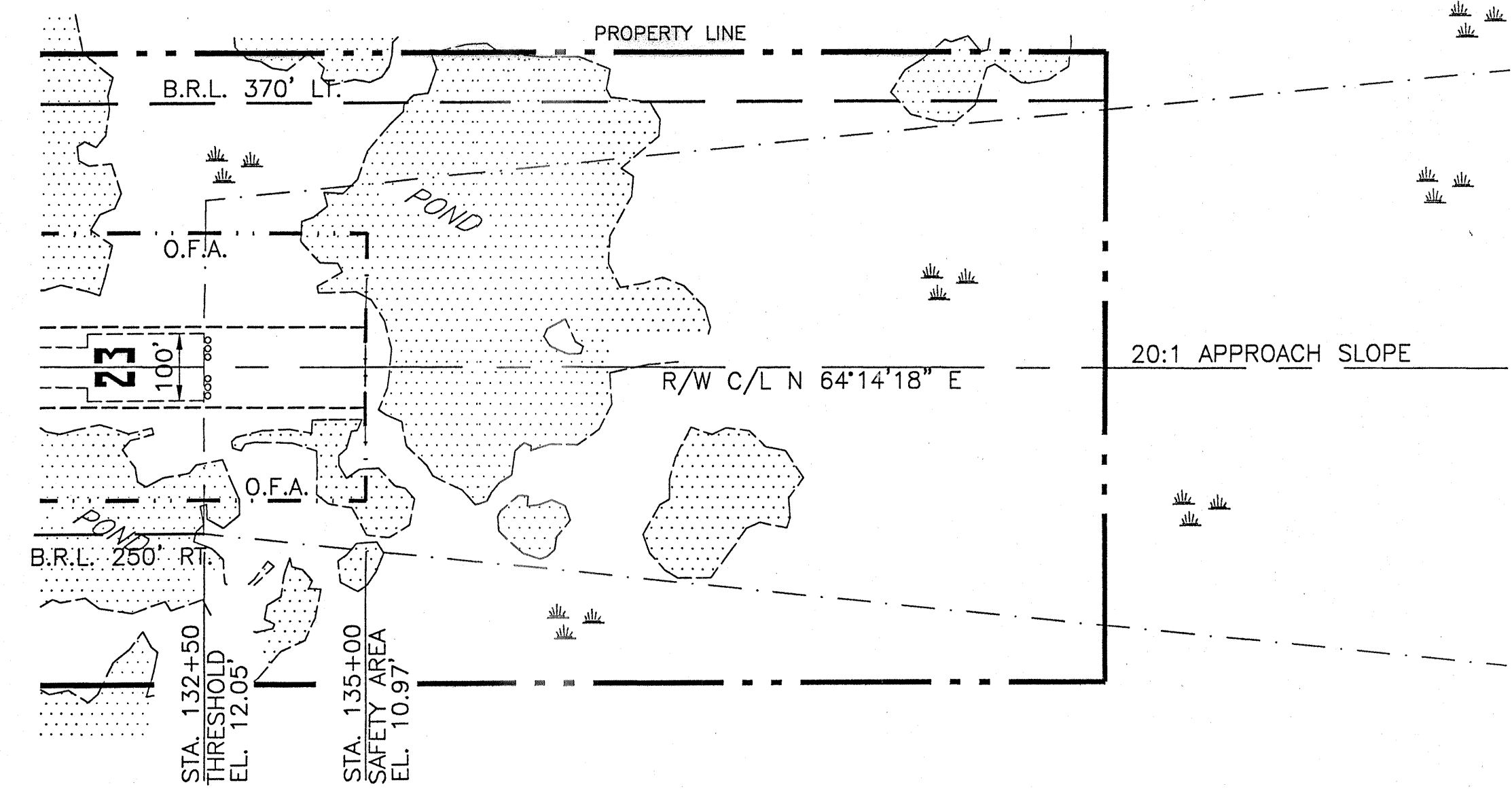
STEBBINS AIRPORT
 AIRPORT LAYOUT PLAN

OBSTRUCTION TABLE

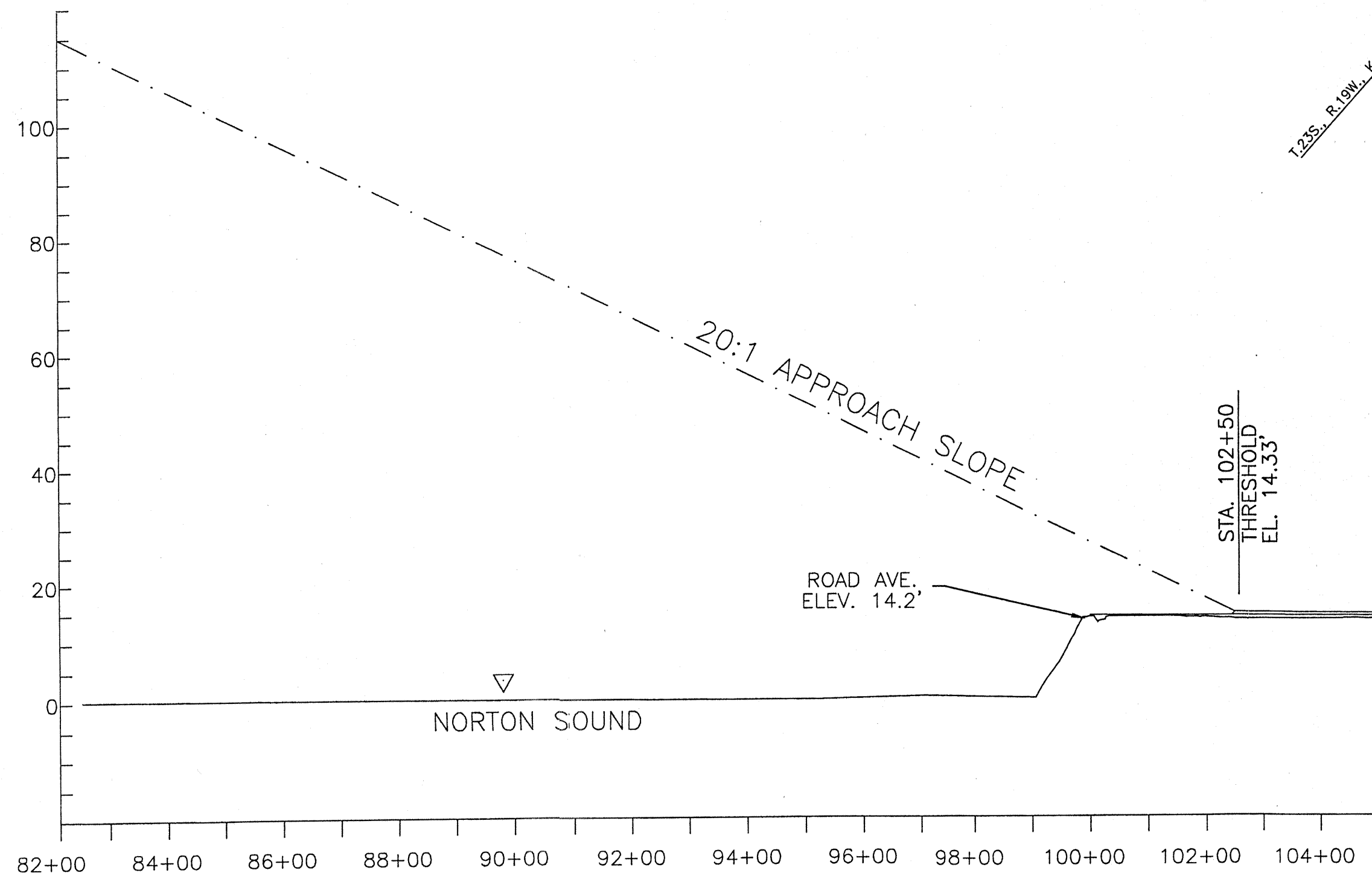
NO.	DESCRIPTION	LOCATION	TOP ELEVATION	APPROACH SLOPE PENETRATION	PROPOSED DISPOSITION OF OBSTRUCTION
△	ROAD	R/W STA. 100+94, 250' LT.	14.1'	7.43'	NO ACTION
△	ROAD	R/W STA. 99+75, ON E	14.0'	1.48'	NO ACTION
△	ROAD	R/W STA. 99+02, 280' RT.	14.5'	-2.40'	NO ACTION
△	HILLSIDE	R/W STA. 82+50 TO 94+50	56'	NONE	NO ACTION
△	AVEC FUEL TANKS	R/W STA. 102+25, 240' LT.	29.4'	15.07'	NO ACTION



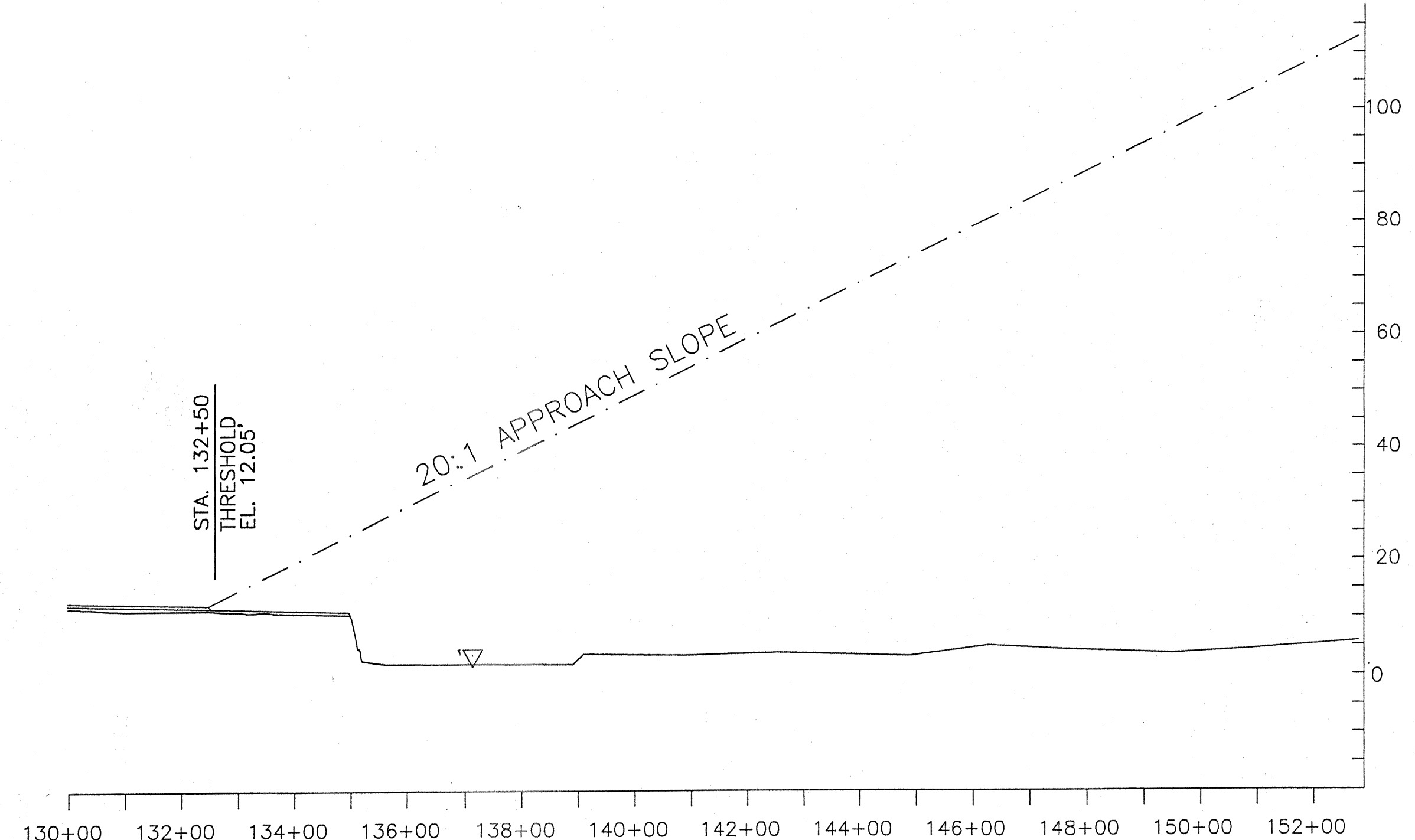
RUNWAY 5 INNER APPROACH PLAN



RUNWAY 23 INNER APPROACH PLAN

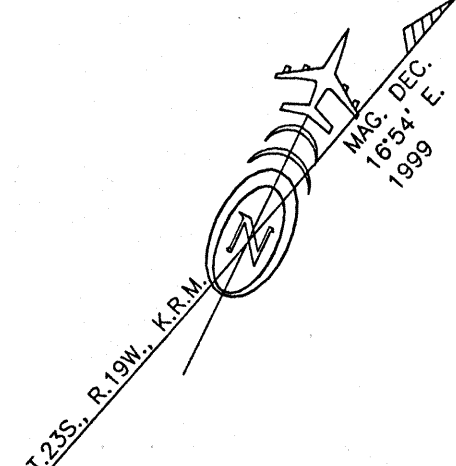


RUNWAY 5 INNER APPROACH PROFILE



RUNWAY 23 INNER APPROACH PROFILE

NOTE: NO OBSTRUCTIONS FOR RUNWAY 23.



DESIGN	PKS		
DRAWN	CAT		
CHECKED	CML		
CAT	7/13/99	AS-BUILT & UPDATED PER CHG. 5	
BY	DATE	REVISIONS	

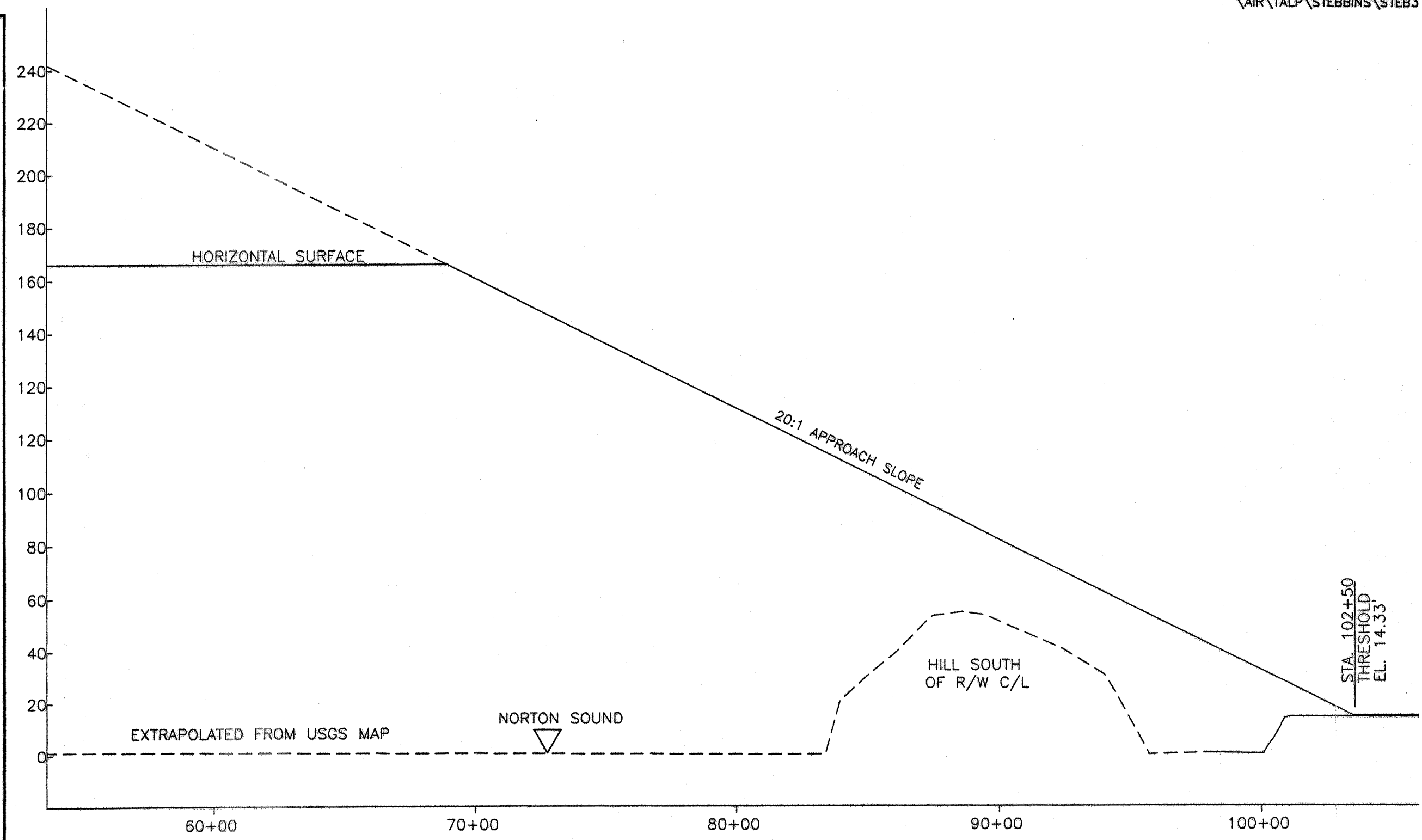
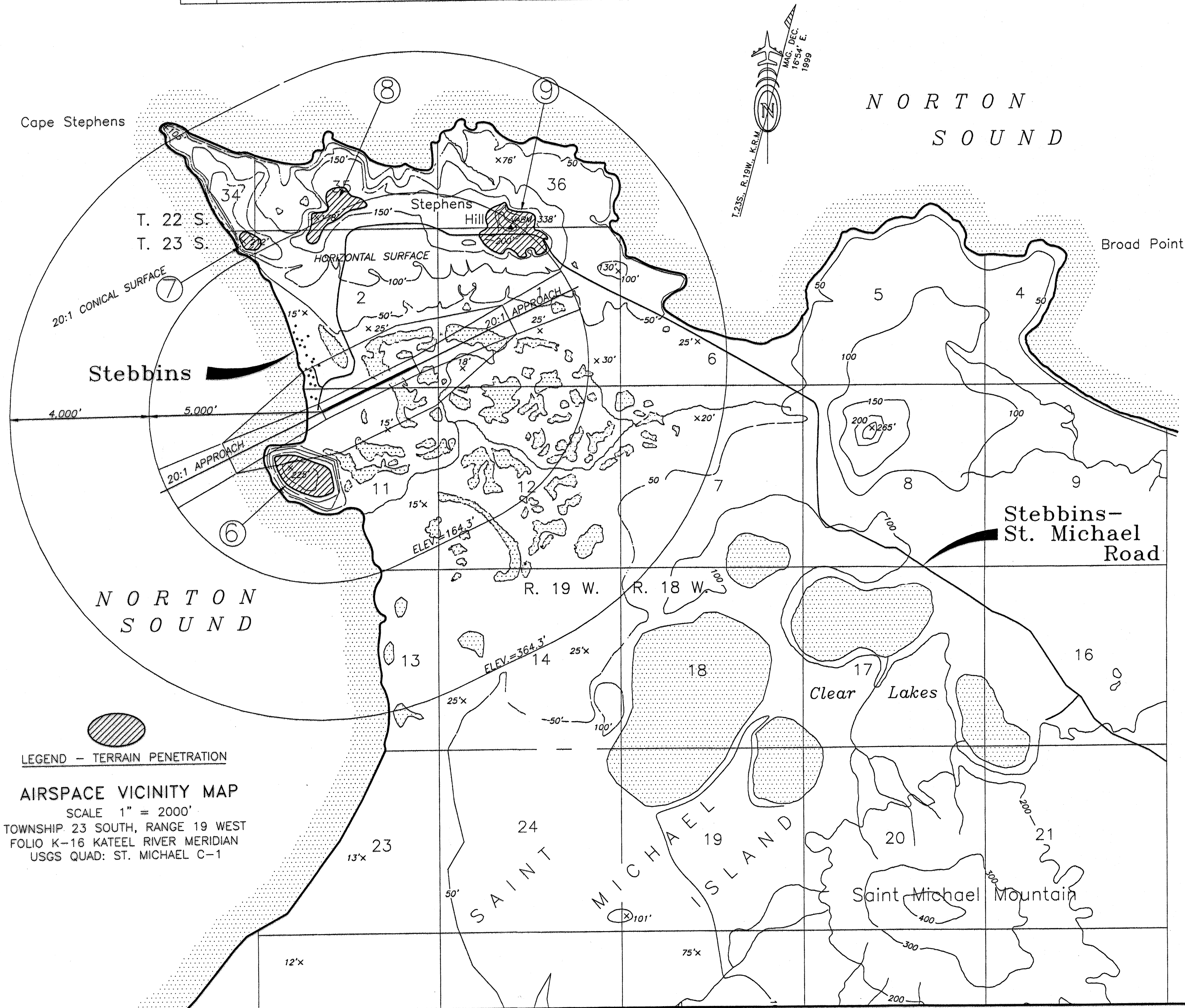
STATE OF ALASKA
 DEPARTMENT OF TRANSPORTATION AND PUBLIC FACILITIES
 NORTHERN REGION-WESTERN DISTRICT-DESIGN & CONSTRUCTION-AVIATION
 APPROVED *Patricia D. Miller* DATE *7/26/00*
 PATRICIA D. MILLER, P.E. DESIGN GROUP CHIEF

AIRPORT LAYOUT PLAN APPROVED
 BY LETTER DATED: *11-29-00*
David Stebbins
 AIRPORTS DIVISION,
 ALASKAN REGION, AAL-620

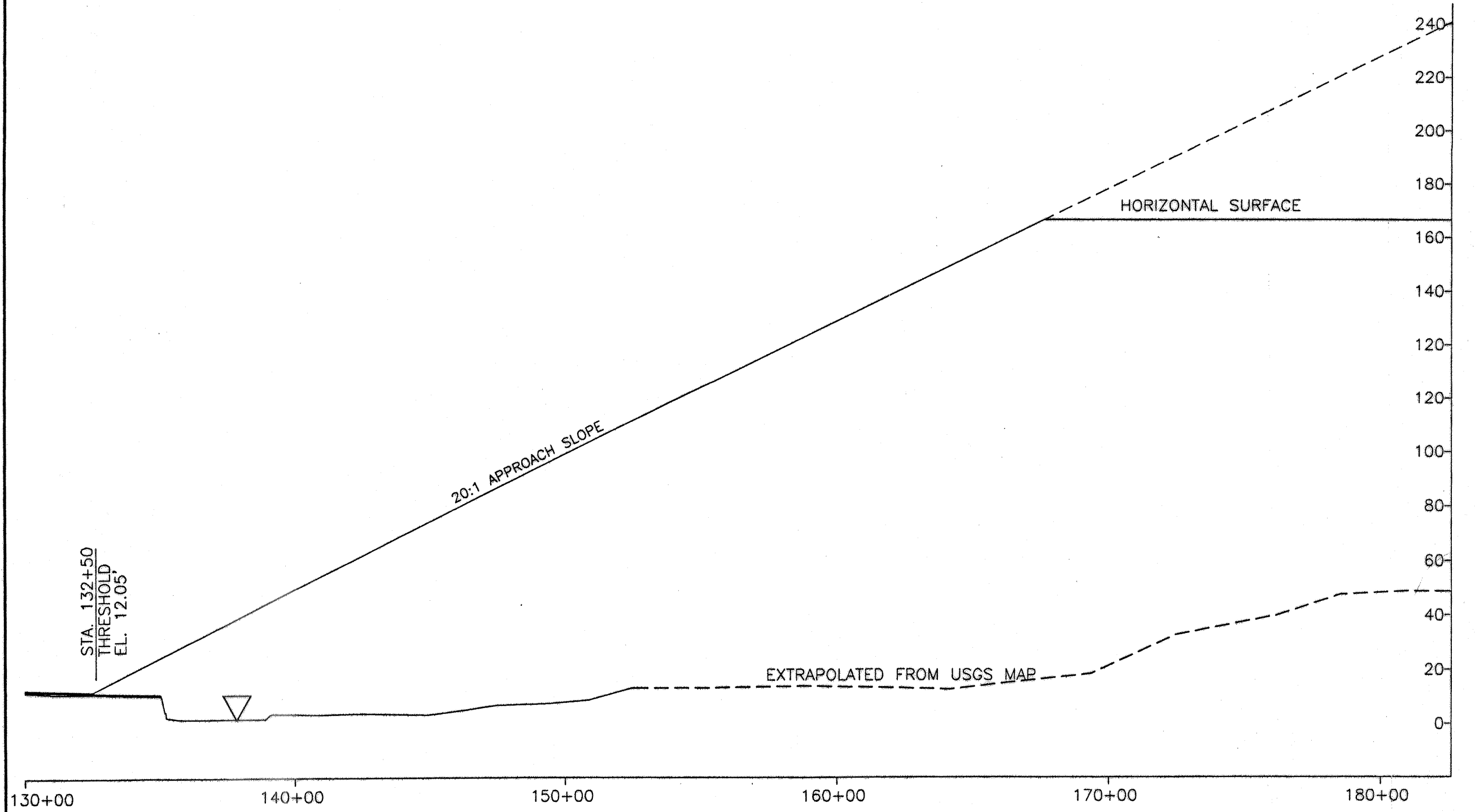
STEBBINS AIRPORT
 INNER PORTION OF THE APPROACH
 SURFACE PLAN & PROFILE

SHEET
 2 OF 3

OBSTRUCTION TABLE				
NO.	DESCRIPTION	SURFACE	TOP ELEVATION	
			EXISTING	ULTIMATE
⑥	MOUNTAINS	TRANSITIONAL/HORIZONTAL	225'	SAME
⑦	MOUNTAINS	HORIZONTAL	212'	SAME
⑧	MOUNTAINS	HORIZONTAL	178'	SAME
⑨	MOUNTAINS	HORIZONTAL	338'	SAME



RUNWAY 5 COMPOSITE APPROACH PROFILE



RUNWAY 23 COMPOSITE APPROACH PROFILE

DESIGN	PKS		
DRAWN	CAT		
CHECKED	CML		
CAT	7/13/99	AS-BUILT & UPDATED PER CHG. 5	
BY	DATE	REVISIONS	

STATE OF ALASKA
 DEPARTMENT OF TRANSPORTATION AND PUBLIC FACILITIES
 NORTHERN REGION-WESTERN DISTRICT-DESIGN & CONSTRUCTION-AVIATION

APPROVED
Patricia D. Miller DATE *7/26/00*
 PATRICIA D. MILLER, P.E. DESIGN GROUP CHIEF

AIRPORT LAYOUT PLAN APPROVED
 BY LETTER DATED: *11-29-00*
David S. Stelling
 AIRPORTS DIVISION,
 ALASKAN REGION, AAL-626

STEBBINS AIRPORT
 AIRSPACE AND
 COMPOSITE APPROACH PROFILES

SHEET
 3
 OF
 3