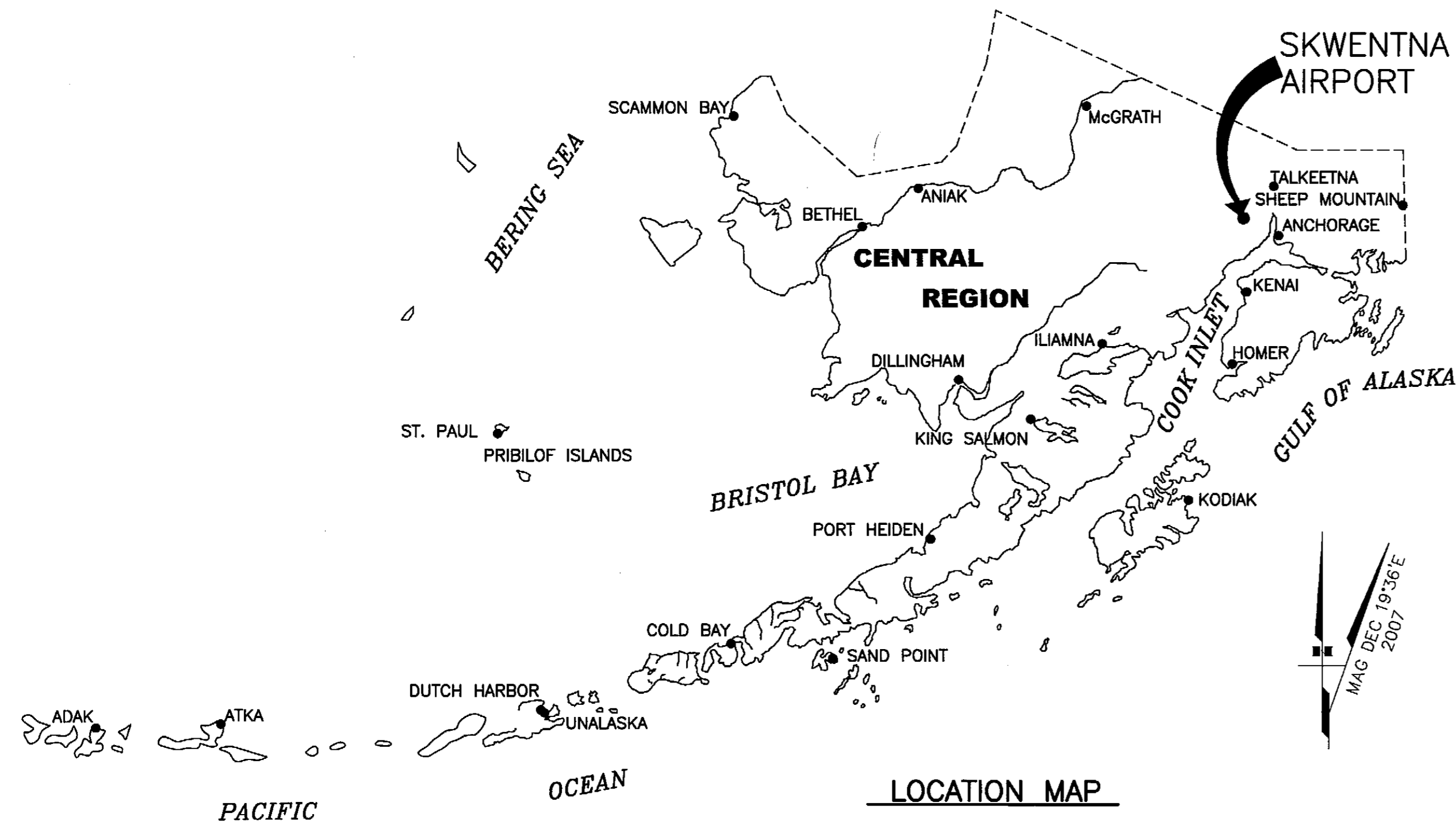


FILE No.: 232-62-1

Designed By: milewellyn
 Drawn By: mbauer
 Checked By: blanson
 Date Plotted: 8/15/2007, 8:25 PM
 Layout Name: test-1
 File Name: P:\Projects\059422(Skwentna)\ALP\ALP_Skwentna_Data.dwg

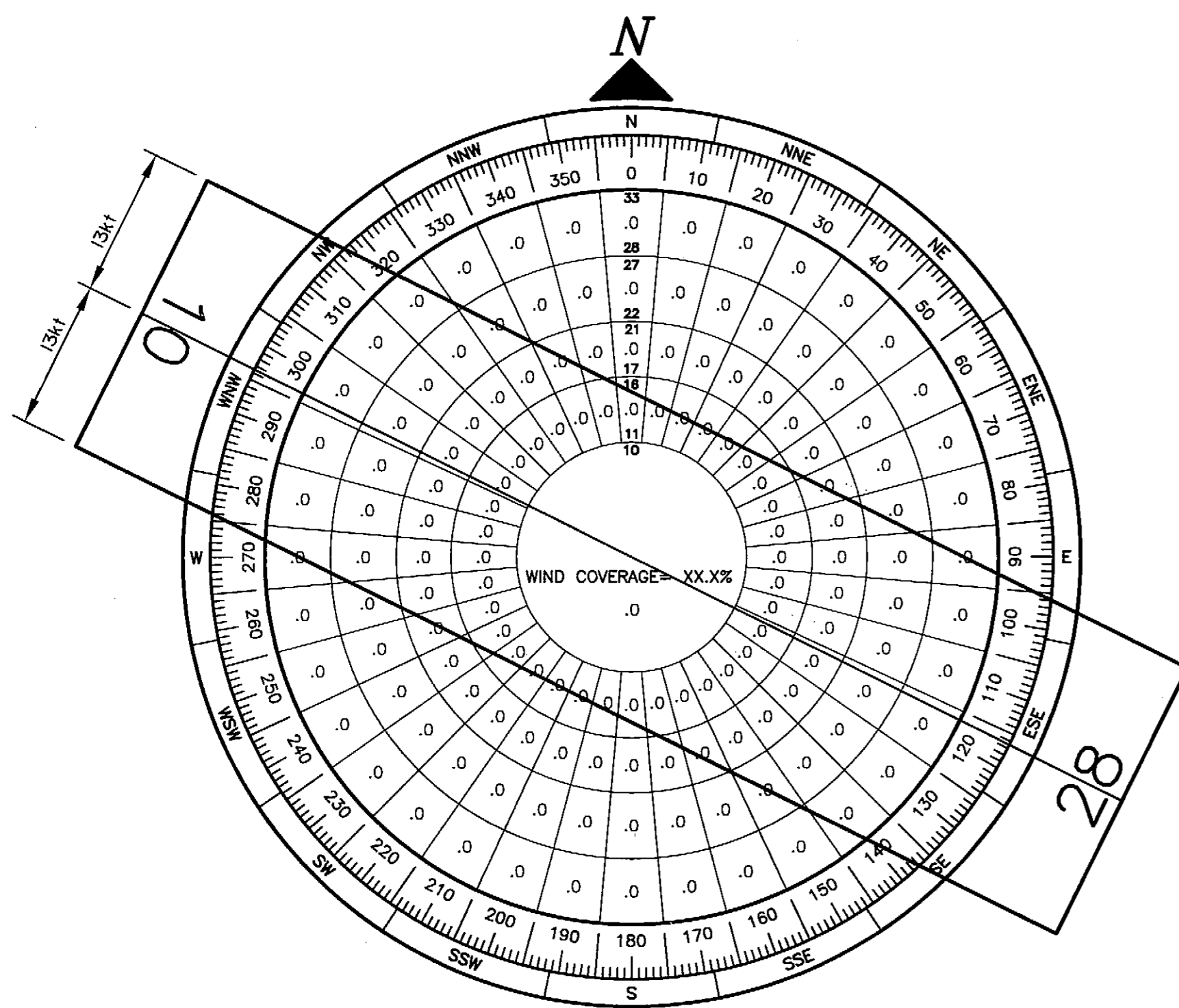


LEGEND		
ITEM	EXISTING	ULTIMATE
AIRPORT REFERENCE POINT (A.R.P.)		
ANTENNA		
BLUFF		
BUILDINGS		
BUILDING RESTRICTION LINE		
FENCE		
PAPI		
PROPERTY LINE		
REIL		
ROADWAYS		
ROTATING BEACON		
SHORELINE		
SURVEY MONUMENT		
THRESHOLD MARKERS/LIGHTS		
TOPOGRAPHIC CONTOURS		
TREE (LARGE SINGLE)		
TREELINE		
VASI		
WIND CONE		
WIND CONE AND SEGMENTED CIRCLE		

AIRPORT DATA TABLE	
ITEM	EXISTING
ICAO IDENTIFIER	PASW
NATIONAL AIRPORT IDENTIFIER	SKW
FAA SITE NUMBER	50708.*A
AIRPORT ELEVATION NAVD88 (ESTIMATED)	148'
AIRPORT REFERENCE CODE	B II
MEAN MAX. TEMPERATURE, HOTTEST MONTH	JULY, 65°F
AIRPORT AND TERMINAL NAVIGATION AIDS	NONE
TAXIWAY LIGHTING/MARKING	NONE
OBSTRUCTION SURVEY SOURCE & TYPE	NONE
MAGNETIC DECLINATION, YEAR, RATE OF CHANGE	20°20'E, 2005, -0°16'(W) / YEAR 18°56'E, 2010, -0°16'(W) / YEAR

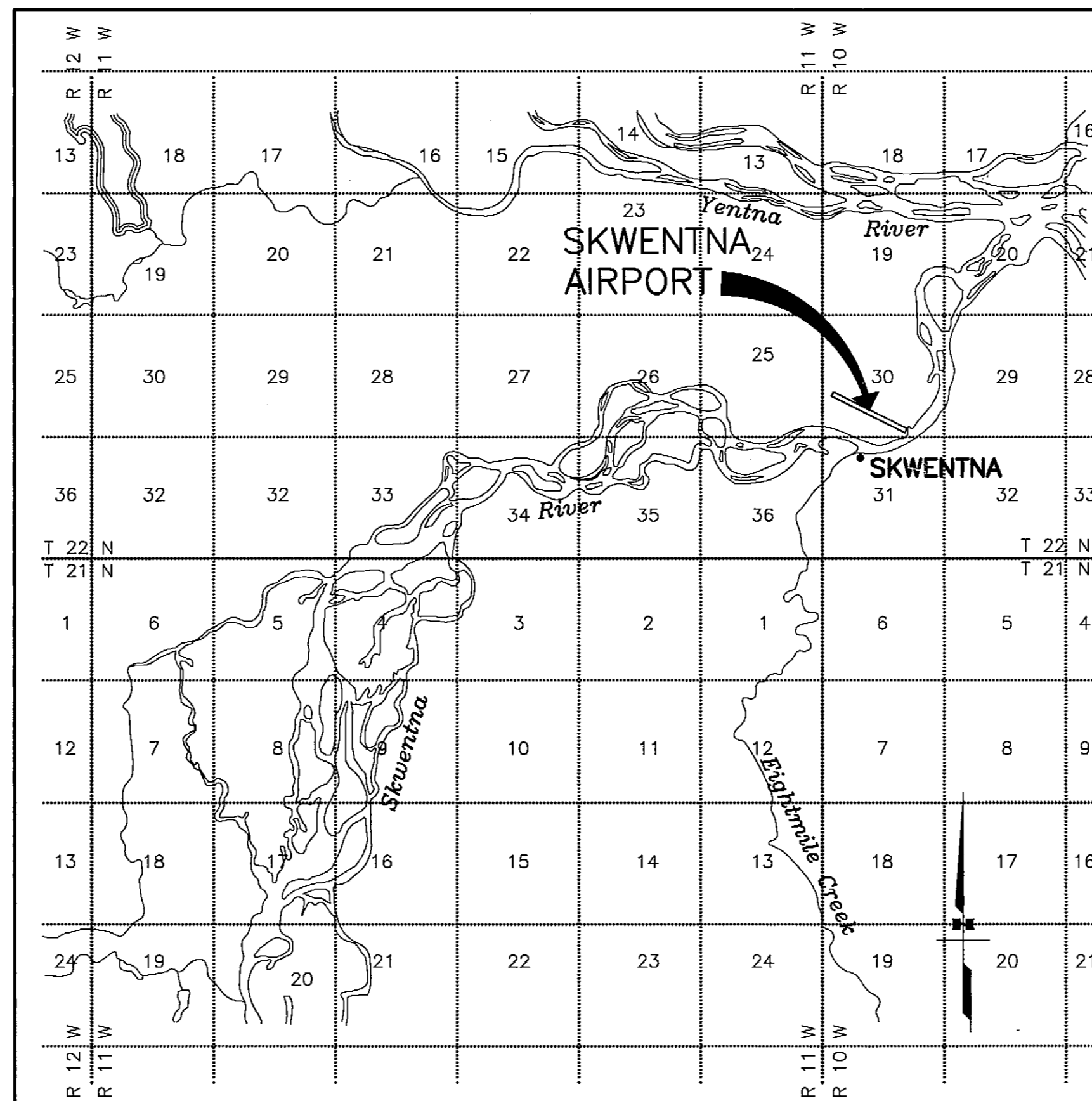
GEOGRAPHIC COORDINATES TABLE		
ITEM	EXISTING LATITUDE	EXISTING LONGITUDE
ARP	61°57'58.01"N	W151°11'43.41"W
THRESHOLD RW 10	61°58'05.46"N	151°12'15.24"W
THRESHOLD RW 28	61°57'50.55"N	151°11'11.57"W

RUNWAY 10/28 DATA TABLE	
ITEM	EXISTING
RUNWAY TYPE	UTILITY OR OTHER THAN UTILITY
FAR PART 77 APPROACH CATEGORY (V, NPI, P)	V
APPROACH SURFACES	20:1
VISIBILITY MINIMUM	≥1 SM
RUNWAY SURFACE	GRAVEL
PAVEMENT STRENGTH SW,DW,DTW,DDTW x1000lbs	N/A
AIRCRAFT APPROACH CATEGORY	B
AIRPLANE DESIGN GROUP	II
TRUE BEARING	N63°33'00"W
EFFECTIVE GRADE	0.046%
TOUCHDOWN ELEVATION NAVD88 (ESTIMATED)	148'
RUNWAY DIMENSIONS	75' x 3400'
RUNWAY SAFETY AREA (RSA) DIMENSIONS	150' x 3900'
LENGTH BEYOND R/W END	300' / 200'
RUNWAY PROTECTION ZONE (RPZ) DIMENSIONS	250' x 450' x 1000'
RUNWAY OBJECT FREE AREA (ROFA) DIMENSIONS	500' x 4000'
LENGTH BEYOND R/W END OR STOPWAY	300'
RUNWAY OBSTACLE FREE ZONE (ROFZ) DIMENSIONS	250' x 3800'
RUNWAY LIGHTING	MIRL
RUNWAY MARKING TYPE	NONE
RUNWAY VISUAL APPROACH AIDS	NONE



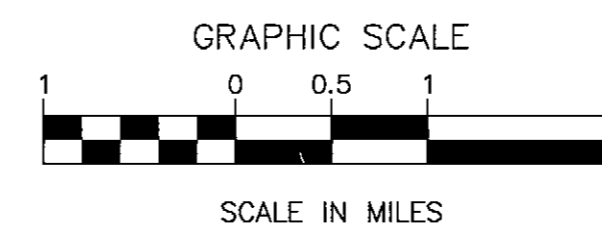
WIND DATA TABLE				
RUNWAY	10.5 kt	13 kt	16 kt	20 kt
10/28				

* WIND DATA NOT AVAILABLE.



VICINITY MAP

PROTRACTED T 22 N, R 10 & 11 W, SEC. 25 & 30
 SEWARD MERIDIAN
 U.S.G.S. TYONEK (D-4), ALASKA



MODIFICATION TO STANDARDS/ NON STANDARD CONDITIONS			
DESCRIPTION	STANDARD	EXISTING	ULTIMATE
RSA BEYOND RWY 28 END	300'	200'	300'
TREES & BUSHES IN ROFA ALONG BOTH SIDES OF RUNWAY	500'	250'	500'
TREES & BUSHES PENETRATE ROFZ IN ISOLATED AREAS ALONG BOTH SIDES OF RUNWAY	250'	<250'	250'
TREES IN PRIMARY, APPROACH, AND TRANSITIONAL SURFACES	CLEAR OF OBSTRUCTIONS	TREES	CLEAR OF OBSTRUCTIONS

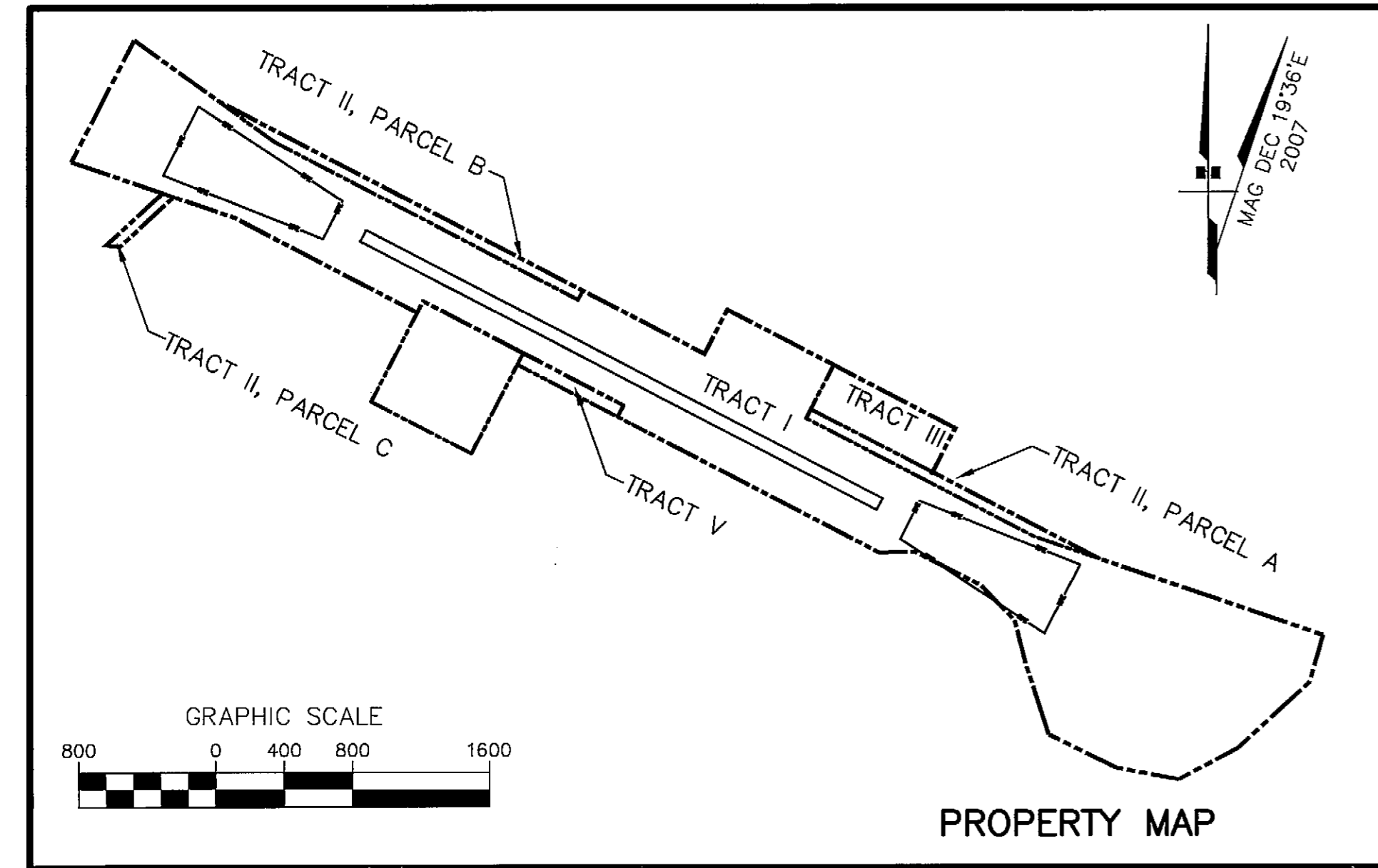
NOTES

1. THE RUNWAY THRESHOLDS, ARP, AND TRUE BEARING SHOWN ON THIS ALP HAVE BEEN CALCULATED USING HANDHELD GPS COORDINATES AND AN UNSURVEYED GEO REFERENCED AERIAL PHOTO. THE RUNWAY BEARING INDICATED ON THE 1987 AIRPORT PROPERTY PLAN DIFFERS FROM THE BEARING CALCULATED FOR THIS ALP. THE METHOD USED TO DETERMINE THE RUNWAY BEARING ON THE 1985 PROPERTY PLAN (REVISED IN 1987) IS UNKNOWN.
2. AIRPORT ELEVATION AND EFFECTIVE GRADE TAKEN FROM 1987 ALP.
3. RUNWAY NUMBERS CHANGED FROM 09/27 TO 10/28 DUE TO CHANGES IN MAGNETIC DECLINATION.

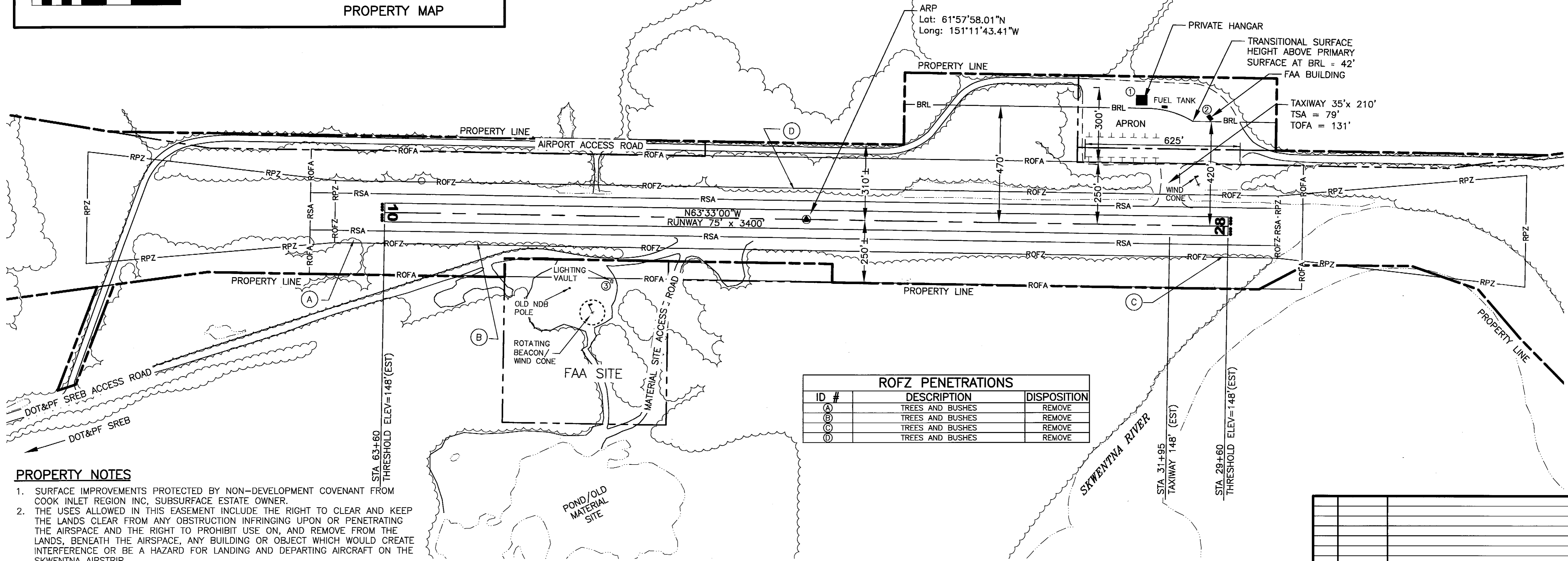
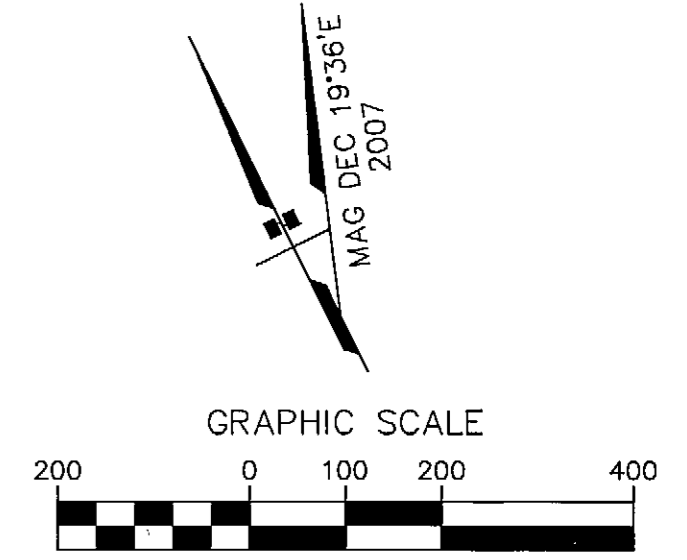
DRAWING INDEX	
SHT #	TITLE
1	AIRPORT DATA SHEET
2	AIRPORT LAYOUT PLAN
3	AIRPORT AIRSPACE

BY: DATE: 8/22/07	REVISION: DATE: 8/22/07
APPROVED: ROBERT A. CAMPBELL, P.E.	PRECONSTRUCTION ENGINEER
RECOMMENDED: HARVEY M. DOUGHTY, P.E.	DESIGN SECTION CHIEF
AIRPORT LAYOUT PLAN CONDITIONAL APPROVAL SUBJECT TO ALP APPROVAL LETTER DATED 10/04/2007	
FAA AIRSPACE REVIEW NUMBER: _____	
DATE: 10/4/07	FAA, AIRPORTS DIVISION ALASKAN REGION, AAL-021

STATE OF ALASKA	
DEPARTMENT OF TRANSPORTATION AND PUBLIC FACILITIES	
CENTRAL REGION	
SKWENTNA AIRPORT	DATE: 08/09/2007
SKWENTNA, ALASKA	SHEET: 1 OF 3
AIRPORT LAYOUT PLAN	
AIRPORT DATA SHEET	



ID #	DESCRIPTION	STATION/OFFSET	TOP ELEV (MSL)	OBSTRUCT MARKING
①	PRIVATE HANGAR	33+16/482' RT	166' EST	NONE
②	FAA BUILDING	30+40/423' RT	163' EST	NONE
③	LIGHTING VAULT	54+44/255' LT	158' EST	NONE



ID #	DESCRIPTION	DISPOSITION
Ⓐ	TREES AND BUSHES	REMOVE
Ⓑ	TREES AND BUSHES	REMOVE
Ⓒ	TREES AND BUSHES	REMOVE
Ⓓ	TREES AND BUSHES	REMOVE

PROPERTY NOTES

1. SURFACE IMPROVEMENTS PROTECTED BY NON-DEVELOPMENT COVENANT FROM COOK INLET REGION INC, SUBSURFACE ESTATE OWNER.
2. THE USES ALLOWED IN THIS EASEMENT INCLUDE THE RIGHT TO CLEAR AND KEEP THE LANDS CLEAR FROM ANY OBSTRUCTION INFRINGING UPON OR PENETRATING THE AIRSPACE AND THE RIGHT TO PROHIBIT USE ON, AND REMOVE FROM THE LANDS, BENEATH THE AIRSPACE, ANY BUILDING OR OBJECT WHICH WOULD CREATE INTERFERENCE OR BE A HAZARD FOR LANDING AND DEPARTING AIRCRAFT ON THE SKWENTNA AIRSTRIP.

ID #	INTEREST	GRANTOR	GRANTEE	PARCEL SIZE	DATE ACQUIRED	RECORDED DOC NO.	ACQUIRED AIP NO.
TR I*	QUITCLAIM DEED TO THE SURFACE ESTATE	STATE OF ALASKA, DCRA	STATE OF ALASKA, DOT/PF	118.13± ac	5-21-85	ADA No 11521	
TR II, PCL A*	QUITCLAIM DEED TO THE SURFACE ESTATE	STATE OF ALASKA, DCRA	STATE OF ALASKA, DOT/PF	2.34 ac	7-1-87		
TR II, PCL B*	QUITCLAIM DEED TO THE SURFACE ESTATE	STATE OF ALASKA, DCRA	STATE OF ALASKA, DOT/PF	3.03 ac	7-1-87		
TR II, PCL C*	QUITCLAIM DEED TO THE SURFACE ESTATE	STATE OF ALASKA, DCRA	STATE OF ALASKA, DOT/PF	0.60 ac	7-1-87		
TR III*	QUITCLAIM DEED TO THE SURFACE ESTATE	STATE OF ALASKA, DCRA	STATE OF ALASKA, DOT/PF	5.33 ac	7-2-87		
TR V**	SEC 17(b) MISCELLANEOUS SITE EASEMENT (EIN 110C4) BUILDING RESTRICTION ZONE	STATE OF ALASKA, DCRA	STATE OF ALASKA, DOT/PF	1.14 ac	6-23-87		

* SEE PROPERTY NOTE 1
 ** SEE PROPERTY NOTE 2

NOTES

1. RUNWAY IS TO BE RENUMBERED FROM 9/27 TO 10/28 DUE TO CHANGES IN MAGNETIC DECLINATION.
2. TREES AND BUSHES IN ROFA ALONG BOTH SIDES OF RUNWAY.

BY	DATE	REVISION

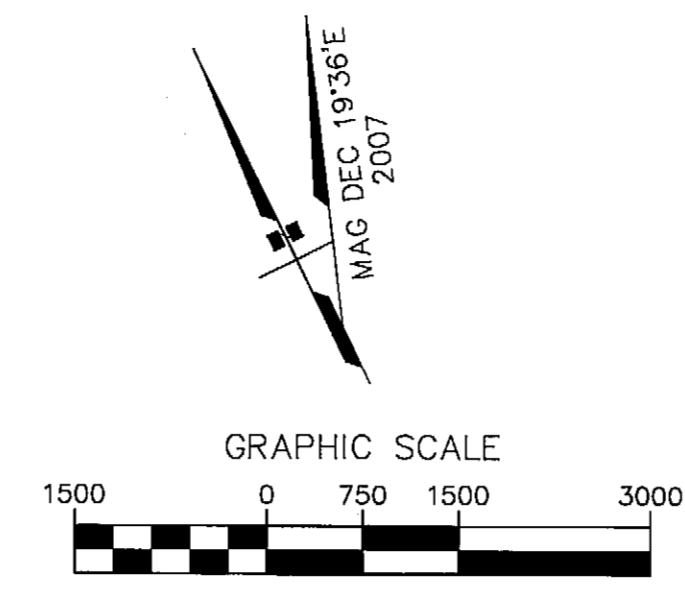
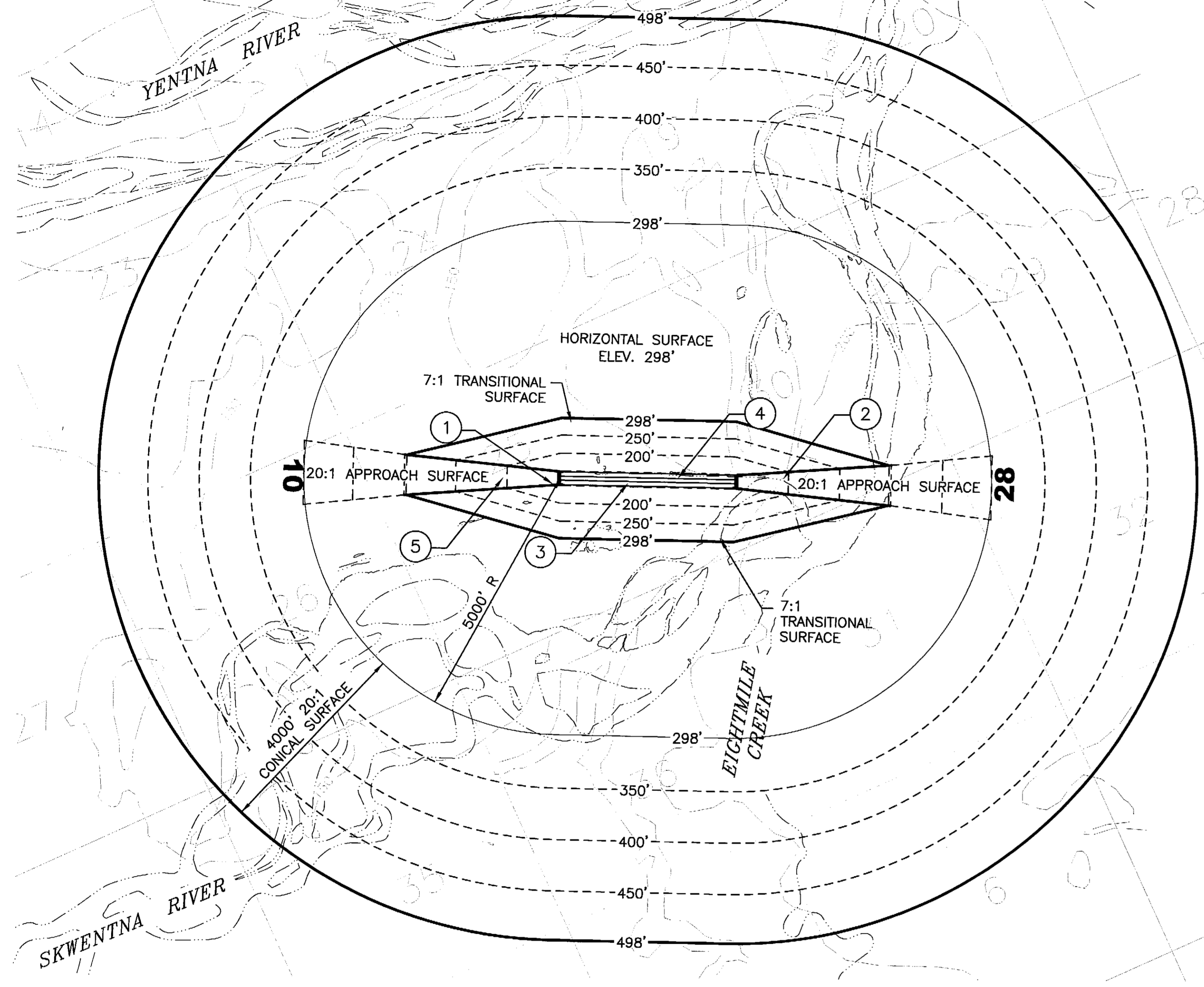
SKWENTNA AIRPORT
 SKWENTNA, ALASKA
 AIRPORT LAYOUT PLAN

DATE: 08/09/2007
 SHEET: 2 OF 3

FILE No.: 232-62-3

Designed By: nilawallyn
Drawn By: mbauer
Checked By: bhanson

Date Plotted: 8/15/2007, 8:39 PM
Layout Name: Part77
File Name: P:\Projects\059422\059422(Skwentna)\ALP\ALP - Skwentna.dwg

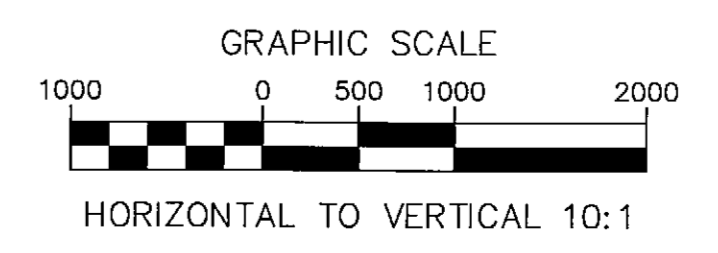
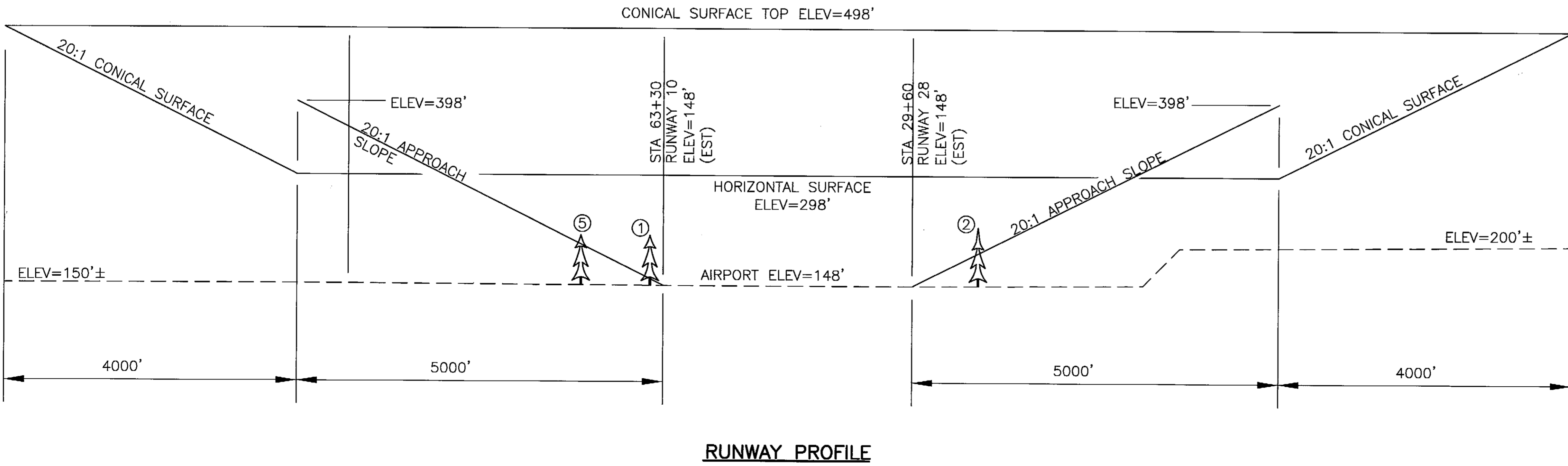


ID #	DESCRIPTION	STATION/OFFSET	ELEVATION	SURFACE PENETRATED	SURFACE ELEVATION	AMOUNT PENETRATION	DISPOSITION	STAGE TO CORRECT
1	TREES	65+10/110' LT	216'	APPROACH	157'	59'	REMOVE	
2	TREES	20+60/0	228'	APPROACH	193'	35'	REMOVE	
3	TREES	*/120' RT	233'	PRI/TRANSITION	148'	85'	REMOVE	
4	TREES	*/120' LT	233'	PRI/TRANSITION	148'	85'	REMOVE	
5	TREES	74+50/0	213'	APPROACH	204'	9'	REMOVE	

* ENTIRE LENGTH OF RUNWAY

NOTES

1. TREES PENETRATE TRANSITIONAL SURFACES ALONG BOTH SIDES/ENTIRE LENGTH OF THE RUNWAY, APPROXIMATELY 615' BOTH SIDES OF CENTERLINE.
2. TOPO CONTOURS SHOWN IN FEET.
3. TREES PENETRATE AREA OF PRIMARY SURFACE ON BOTH SIDES OF RUNWAY.
4. PRIMARY SURFACE WIDTH IS 250 FEET.
5. RUNWAY 10 CONTROLLING OBSTRUCTION ARE TREES 1,115' FROM THE RUNWAY THRESHOLD. OBSTRUCTION CLEARANCE SLOPE IS 17:1.
6. THE RUNWAY 28 CONTROLLING OBSTRUCTION IS 900' FROM THE RUNWAY THRESHOLD. OBSTRUCTION CLEARANCE SLOPE IS 15:1.
7. A RANGEFINDER WITH A BUILT IN INCLINOMETER WAS USED TO IDENTIFY OBSTRUCTIONS.
8. PART 77 SURFACES BASED ON EXISTING AIRPORT LAYOUT.
9. RUNWAY 10/28 DOES NOT MEET ANY RUNWAY THRESHOLD SITING CRITERIA, BECAUSE OF TREES.
10. THERE ARE NO ORDINANCES OR STATUTES IN EFFECT THAT SPECIFY HEIGHT RESTRICTIONS.



BY	DATE	REVISION

SKWENTNA AIRPORT
 SKWENTNA, ALASKA
 AIRPORT LAYOUT PLAN
 AIRPORT AIRSPACE

DATE: 08/09/2007
 SHEET: 3 OF 3