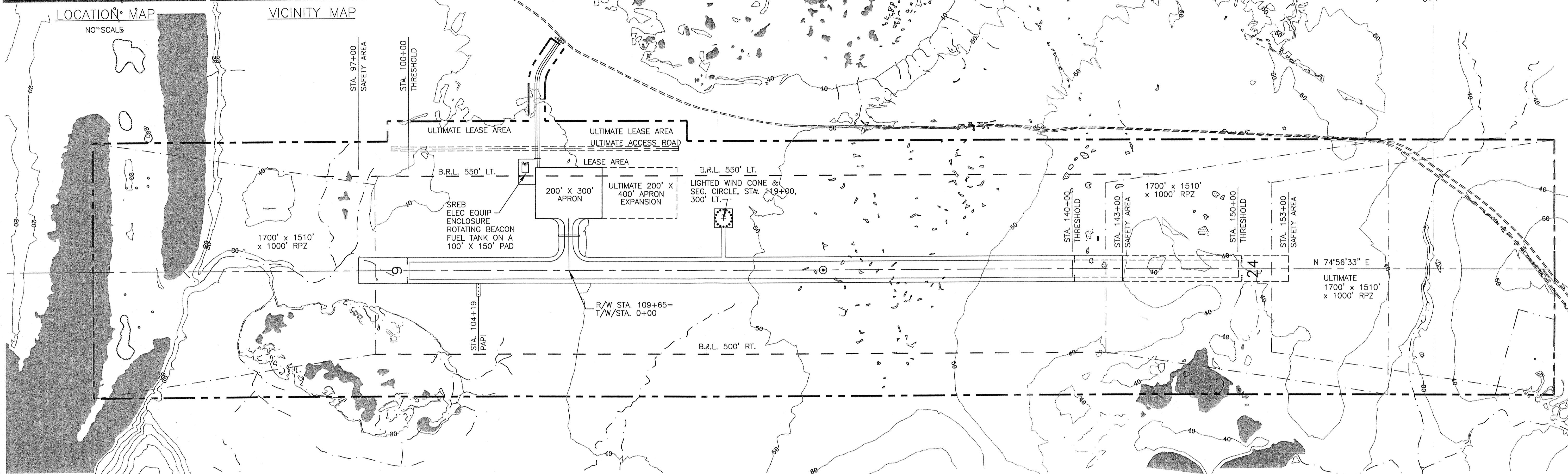


Mag Dec
17°58'E
July 01

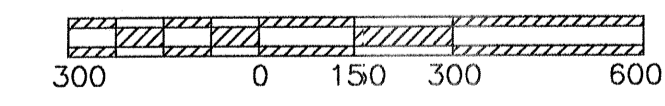


- NOTES:
1. NO OFZ OBJECT PENETRATIONS.
 2. NO THRESHOLD SITING SURFACE OBJECT PENETRATIONS.
 3. THE GEODETIC COORDINATES WERE OBTAINED FROM HDR INC. IN 1996.
 4. DATA BASE CONTROL YEAR: NAD 83.

AIRPORT DATA		
	EXISTING	ULTIMATE
AIRPORT ELEVATION (GPS)	60'	SAME
AIRPORT REFERENCE CODE	B-II	SAME
MEAN DAILY MAX. TEMP. HOTTEST MONTH (JULY)	63°	SAME
TAXIWAY LIGHTING	MIL	SAME
RAMP LIGHTING	NONE	SAME
NAVIGATION AIDS	ROT. BEACON	SAME
COMMUNICATION AIDS	NONE	SAME
AIRPORT REFERENCE POINT (ARP)	LAT. 66°49'04.38" N LONG. 161°01'08.11" W	
STA. 125+00		
THRESHOLD 16	LAT. 66°48'57.99" N LONG. 161°02'08.38" W	SAME
STA. 100+00		
THRESHOLD 24	LAT. 66°49'08.21" N LONG. 161°00'31.94" W	66°49'10.77" N 161°00'07.83" W
EXISTING STA. 140+00, ULT. STA. 150+00		

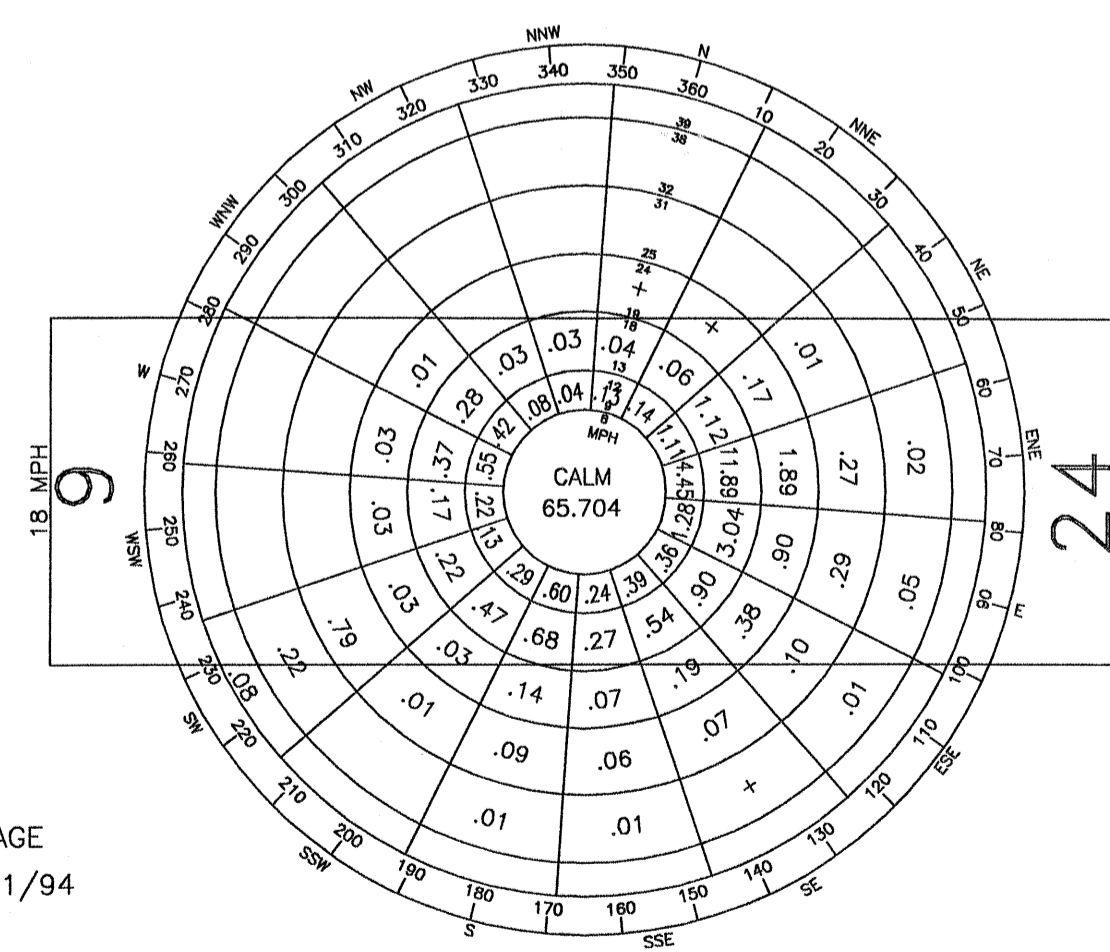
RUNWAY DATA		
	RUNWAY 6-24	
	EXISTING	ULTIMATE
% WIND COVERAGE	96.98	SAME
INSTRUMENT RUNWAY	NONE	SAME
RUNWAY SURFACE TYPE	GRAVEL	SAME
PAVEMENT STRENGTH	N/A	SAME
VISIBILITY MINIMUM	>3/4 MILE	SAME
RUNWAY LIGHTING	MIRL	SAME
RUNWAY MARKING	NONE	SAME
VISUAL APPROACH AIDS	PAPI	SAME
R/W DIMENSIONS	100'x4000'	100'x5000'
R/W SAFETY AREA	150'x4600'	150'x5600'
R/W OBJECT FREE AREA (ROFA)	500'x4600'	500'x5600'
R/W OBJECT FREE ZONE (ROFZ)	400'x4400'	400'x5400'
T/W WIDTH	50'	SAME
T/W SAFETY AREA WIDTH	120'	SAME
T/W OFA WIDTH	186'	SAME

LEGEND		
	EXISTING	ULTIMATE
PROPERTY LINE	---	---
BUILDING RESTRICTION LINE (B.R.L.)	B.R.L.	B.R.L.
DEVELOPMENT	[Symbol]	[Symbol]
WIND CONE & SEGMENTED CIRCLE	[Symbol]	[Symbol]
WIND CONE ONLY	[Symbol]	[Symbol]
BUILDING	[Symbol]	[Symbol]
ROADWAY	[Symbol]	[Symbol]
FENCING	[Symbol]	[Symbol]
AIRPORT REFERENCE POINT	[Symbol]	[Symbol]
ROTATING BEACON	[Symbol]	[Symbol]
T/W WIDTH	[Symbol]	[Symbol]
ANTENNA/TOWER	[Symbol]	[Symbol]
VASI	[Symbol]	[Symbol]
SHORELINE/WATERLINE	[Symbol]	[Symbol]
TREELINE	[Symbol]	[Symbol]
THRESHOLD	[Symbol]	[Symbol]
OVERHEAD POWER	[Symbol]	[Symbol]



WIND ROSE
WIND DATA

PERCENT WIND COVERAGE
 RUNWAY: 12 MPH = 94.34%
 RUNWAY: 15 MPH = 96.98%
 RUNWAY: 18 MPH = 98.32%



ENRI UNIVERSITY OF ALASKA, ANCHORAGE
 WIND DATA PERIOD: 10/21/92 TO 2/1/94

DESIGN_PKS	
DRAWN_CAT	
CHECKED_CML	
CAT	7/25/01 AS-BUILT
BY	2/20/97 FAA APPROVED
DATE	REVISIONS

STATE OF ALASKA
 DEPARTMENT OF TRANSPORTATION AND PUBLIC FACILITIES
 NORTHERN REGION

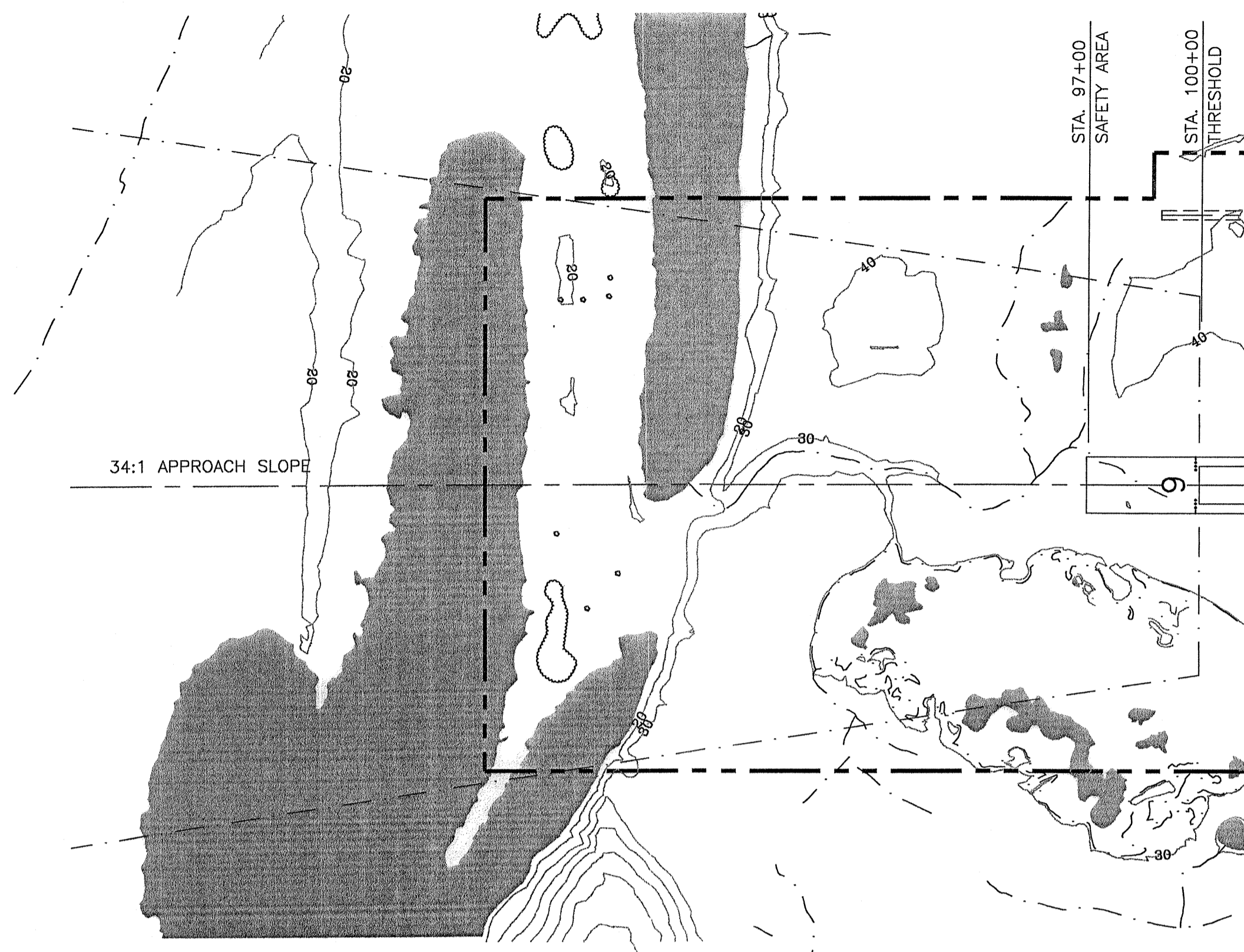
APPROVED *Patricia D. Miller* DATE 8/29/01
 PATRICIA D. MILLER, P.E. DESIGN GROUP CHIEF

REVISED AIRPORT LAYOUT PLAN APPROVED
 BY LETTER DATED: 10-18-01
David S. Stebbins
 AIRPORTS DIVISION,
 ALASKAN REGION, AAL-620
 AIRSPACE REVIEW #97AAL-038NRA

THIS ALP SUPERCEDES THE ALP DATED 11/20/74
 AND REVISED THROUGH 11/04/92

NOORVIK AIRPORT
 AIRPORT LAYOUT PLAN

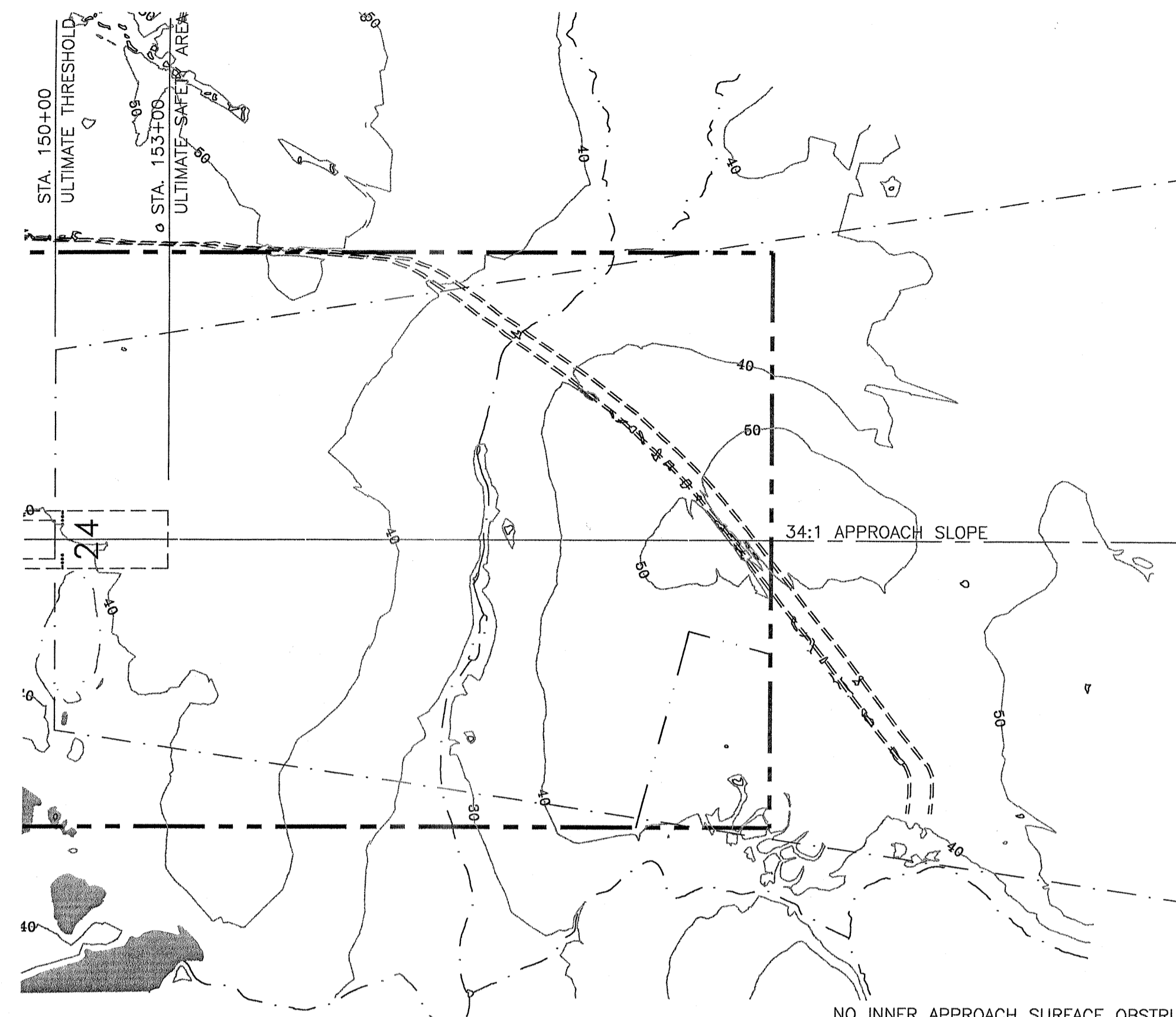
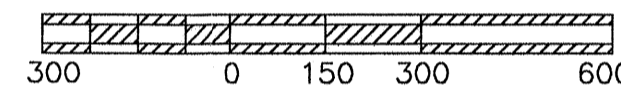
SHEET
 1 OF 3



NO INNER APPROACH SURFACE OBSTRUCTIONS

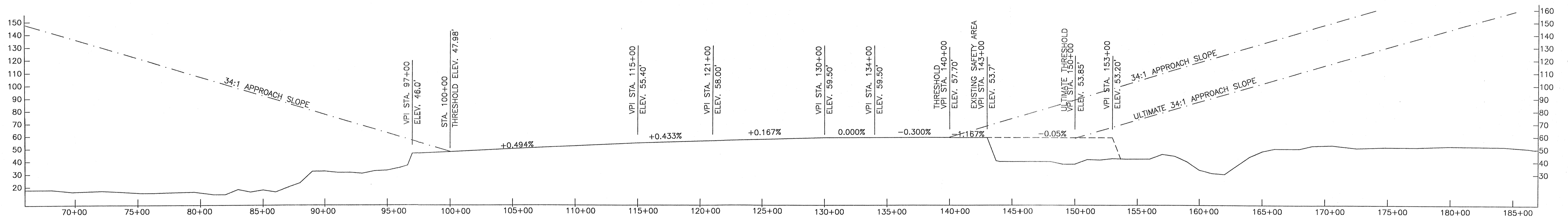
R/W 6 INNER APPROACH PLAN

Mag Dec
17°58'E
July 01



NO INNER APPROACH SURFACE OBSTRUCTIONS

R/W 24 INNER APPROACH PLAN



DESIGN_PKS

DRAWN_CAT

CHECKED_CML

BY	DATE	REVISIONS
CAT	7/25/01	AS-BUILT
	2/20/97	FAA APPROVED

STATE OF ALASKA
DEPARTMENT OF TRANSPORTATION AND PUBLIC FACILITIES
NORTHERN REGION

APPROVED *Patricia D. Miller* DATE *8/29/01*
PATRICIA D. MILLER, P.E. DESIGN GROUP CHIEF

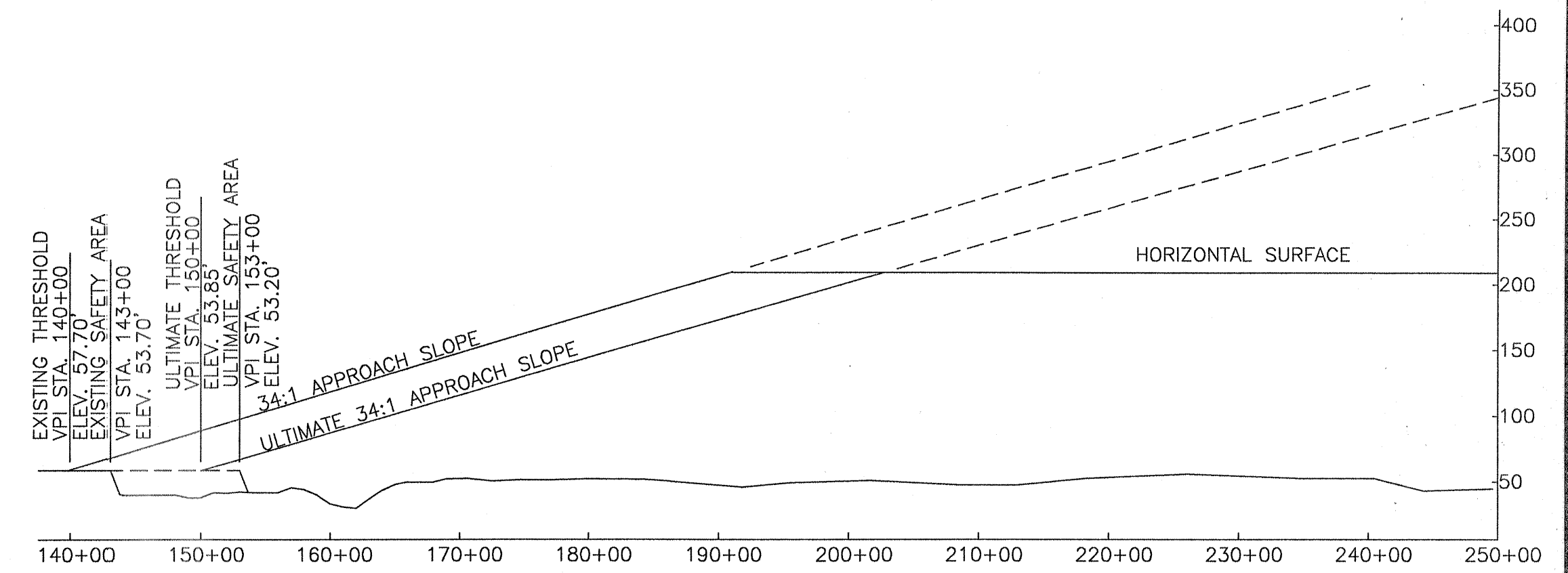
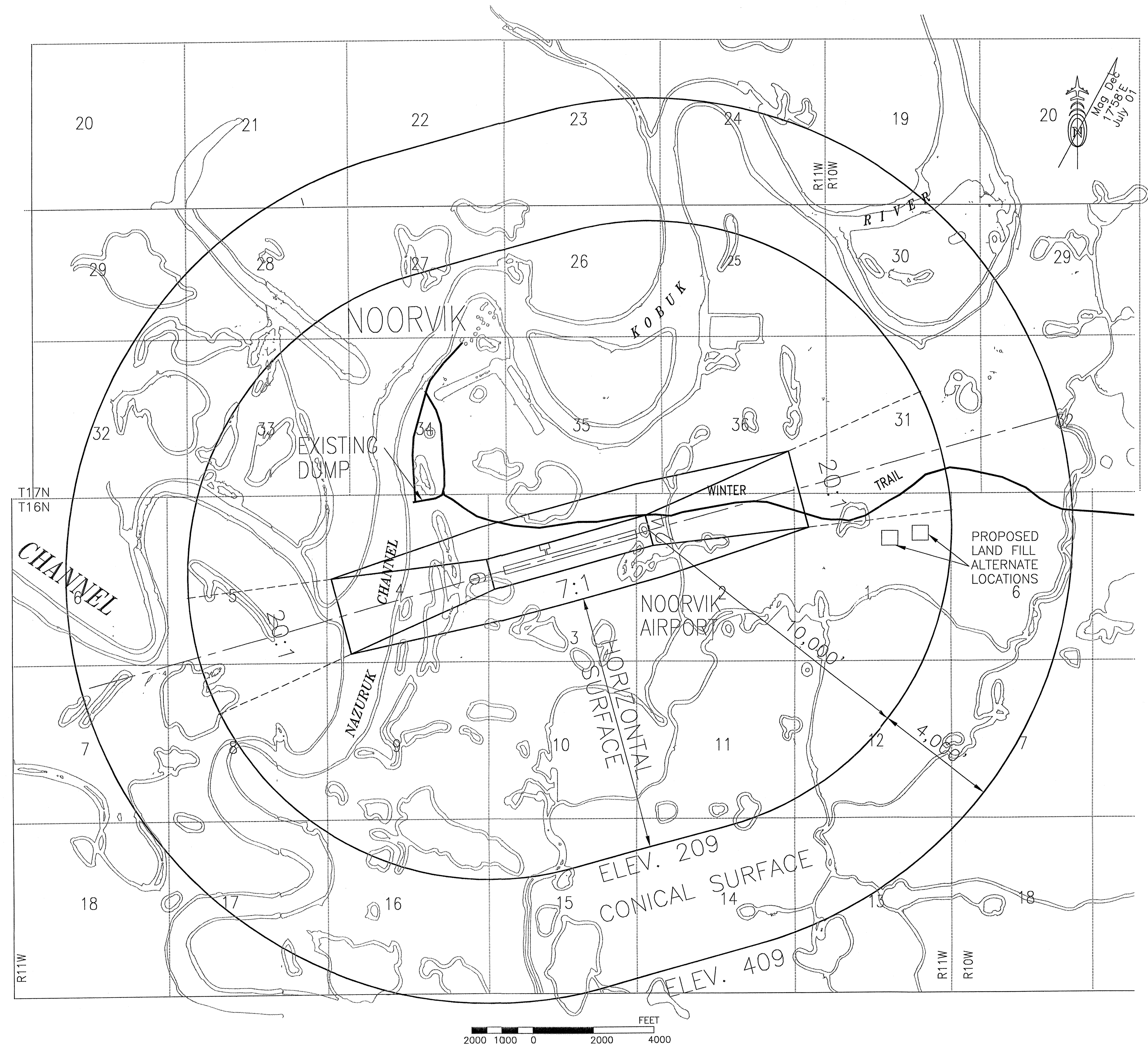
REVISED AIRPORT LAYOUT PLAN APPROVED
BY LETTER DATED: *10-18-01*

David Stelling
AIRPORTS DIVISION,
ALASKAN REGION, AAL-620
AIRSPACE REVIEW #97AAL-038NRA

NOORVIK AIRPORT
INNER PORTION OF THE
APPROACH SURFACE
PLANS AND PROFILE

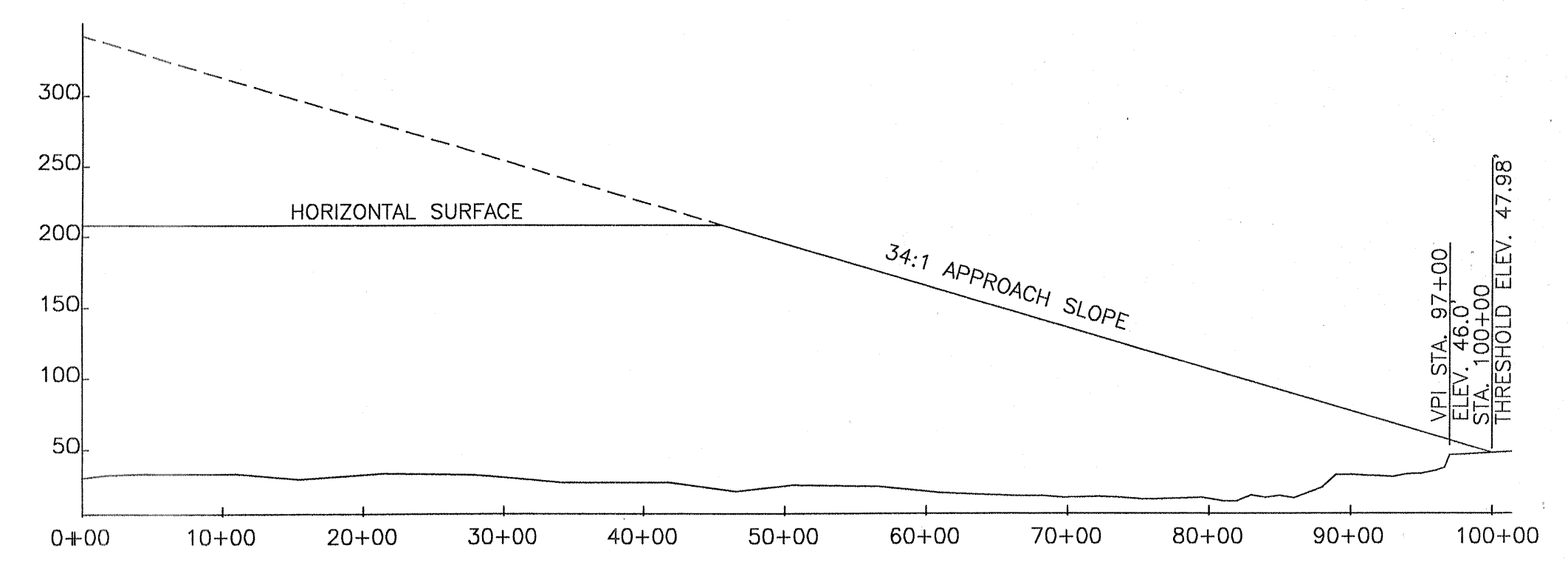
SHEET

2 OF 3



R/W 24 COMPOSITE APPROACH PROFILE

NOTES:
 REFER TO THE INNER PORTION OF THE APPROACH SURFACE PLAN VIEW DETAILS FOR CLOSE-IN OBSTRUCTIONS.
 NO FAR PART 77 OBSTRUCTIONS



R/W 6 COMPOSITE APPROACH PROFILE

DESIGN_PKS	
DRAWN_CAT	
CHECKED_CML	
CAT	7/25/01 AS-BUILT
BY	2/20/97 FAA APPROVED
DATE	REVISIONS

STATE OF ALASKA
 DEPARTMENT OF TRANSPORTATION AND PUBLIC FACILITIES
 NORTHERN REGION

APPROVED *Patricia D. Miller* DATE 8/29/01
 PATRICIA D. MILLER, P.E. DESIGN GROUP CHIEF

REVISED AIRPORT LAYOUT PLAN APPROVED
 BY LETTER DATED: 10-18-01
David Stelling
 AIRPORTS DIVISION,
 ALASKAN REGION, AAL-620
 AIRSPACE REVIEW #97AAL-038NRA

NOORVIK AIRPORT
 AIRSPACE
 COMPOSITE APPROACH PROFILES

SHEET
 3 OF
 3