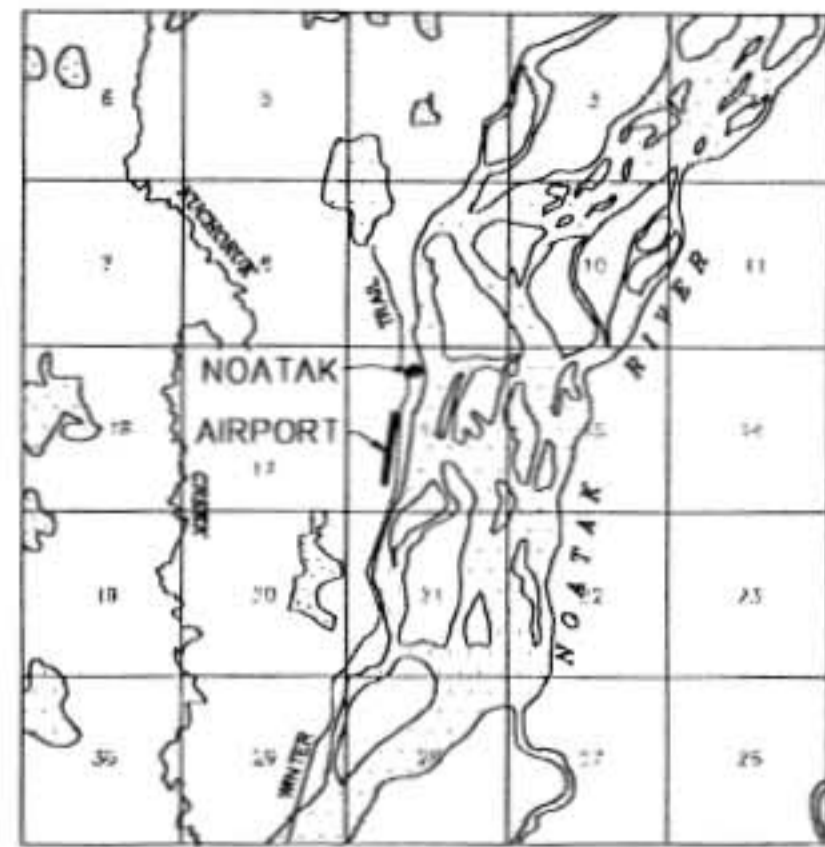


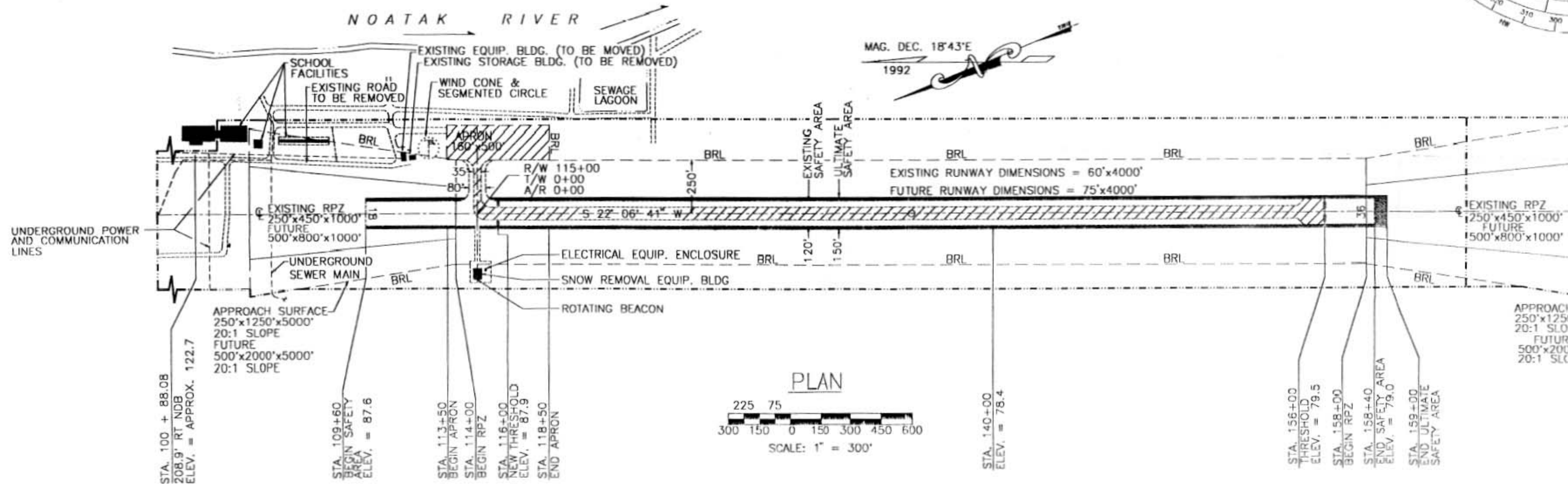
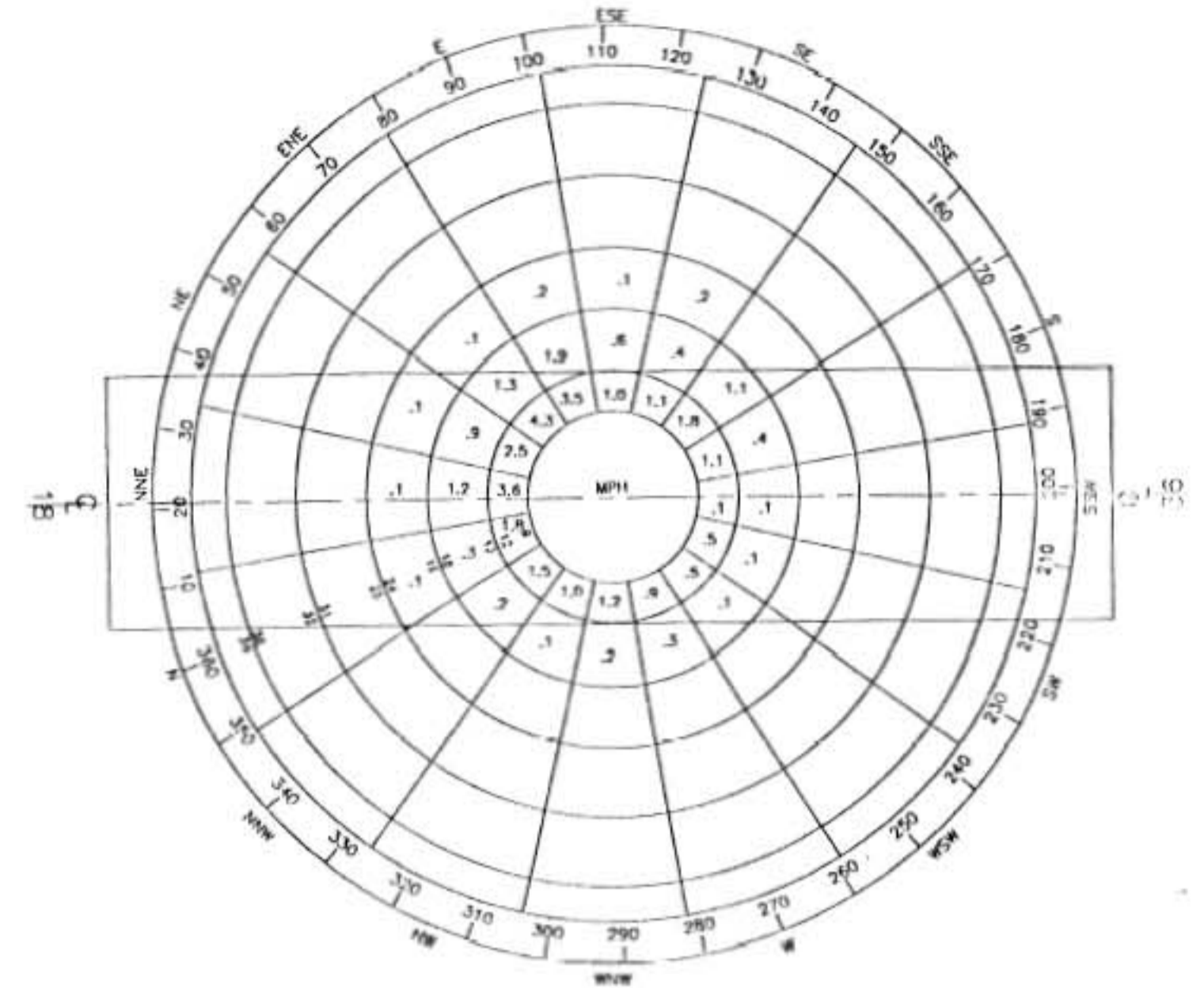


LOCATION MAP
NO SCALE



VICINITY MAP
NO SCALE
USGS NOATAK (C-2)
T 25 N, R 6 E, 19W
KATEEL RIVER MERIDIAN, ALASKA

WIND ROSE
10.5 KNOTS
WIND DATA
95.5% WIND COVERAGE
RUNWAY 18/36
WIND DATA PERIOD:
August 1985 - September 1986
University of Alaska
Arctic Environmental
Information & Data Center



	RUNWAY 18 / 36		RUNWAY	
	EXISTING	FUTURE	EXISTING	FUTURE
EFFECTIVE GRADIENT	0.32%	0.32%		
% WIND COVERAGE	95.5%	95.5%		
PAVEMENT SURFACE	GRAVEL	GRAVEL		
PAVEMENT STRENGTH	N/A	N/A		
APPROACH SURFACES	20:1	20:1		
RUNWAY LIGHTING	MIRL	MIRL		
RUNWAY MARKING	NONE	NONE		
NAVIGATION AIDS	NDB	NDB		
RUNWAY SAFETY AREA	120'x4880'	150'x4940'		
RUNWAY DIMENSION	60'x4000'	75'x4000'		
TAXIWAY	35'x220'	35'x220'		

	EXISTING	FUTURE
AIRPORT ELEVATION (M.S.L.)	88	88
AIRPORT LOCATION POINT (A.L.P.)		
MEAN TEMP. HOTTEST MONTH (DAILY MAX.)	59°	59°
TAXIWAY LIGHTING	MITL	MITL
RAMP LIGHTING	NONE	NONE
AIRPORT REFERENCE POINT (A.R.P.)	LAT. 67 33.8'N LONG. 162 58.7'W	LAT. 67 33.8'N LONG. 162 58.7'W
AIRPORT AND TERMINAL NAVAIDS	NDB	NDB
AIRPORT REFERENCE CODE	B-I	B-II
RUNWAY 18 THRESHOLD	LAT. 67 33.1'N LONG. 162 58.4'W	LAT. 67 33.1'N LONG. 162 58.4'W
RUNWAY 36 THRESHOLD	LAT. 67 33.5'N LONG. 162 59.0'W	LAT. 67 33.5'N LONG. 162 59.0'W

* NOTE: HORIZONTAL CONTROL BASED ON NAD 1927

	EXISTING	FUTURE
DOT R.O.W.	---	---
BUILDING RESTRICTION LINE (B.R.L.)	---	---
AIRPORT REFERENCE POINT	○	○
ROTATING BEACON	⊙	⊙
BUILDINGS	■	■
ROADWAYS	---	---
RIVER BANK	---	---
THRESHOLD LIGHTING	•	•
WIND CONE (LIGHTED)	⊙	⊙
RUNWAY/TAXIWAYS/APRON	▨	▨
SAFETY AREA/ULTIMATE DEVELOPMENT	▨	▨

ITEM	STANDARD	DEVIATION FROM DESIGN STANDARDS	
		EXISTING	FUTURE

BUILDING TABLE	
BUILDING NAME	ELEVATION
EXISTING EQUIPMENT BUILDING (TO BE MOVED)	105.7
EXISTING STORAGE BUILDING (TO BE REMOVED)	95.9
WIND CONE	111.4
SCHOOL FACILITIES	113.8
SCHOOL FACILITIES	101.3
FUEL STORAGE TANKS (SCHOOL FACILITIES)	97.3
SNOW REMOVAL EQUIPMENT BUILDING	112.2
ELECTRICAL EQUIPMENT ENCLOSURE	96.0

ELEVATIONS ARE GIVEN IN FEET.

DESIGN G.R.			
DRAWN C.A.B.			
CHECKED D.H.			
BY	DATE	REVISIONS	

STATE OF ALASKA
DEPARTMENT OF TRANSPORTATION AND PUBLIC FACILITIES
NORTHERN REGION-WESTERN DISTRICT-DESIGN & CONSTRUCTION-AVIATION

APPROVED *Daniel D. Urbach* DATE 10-4-95
DANIEL D. URBACH, P.E. AIRPORT DESIGN GROUP CHIEF

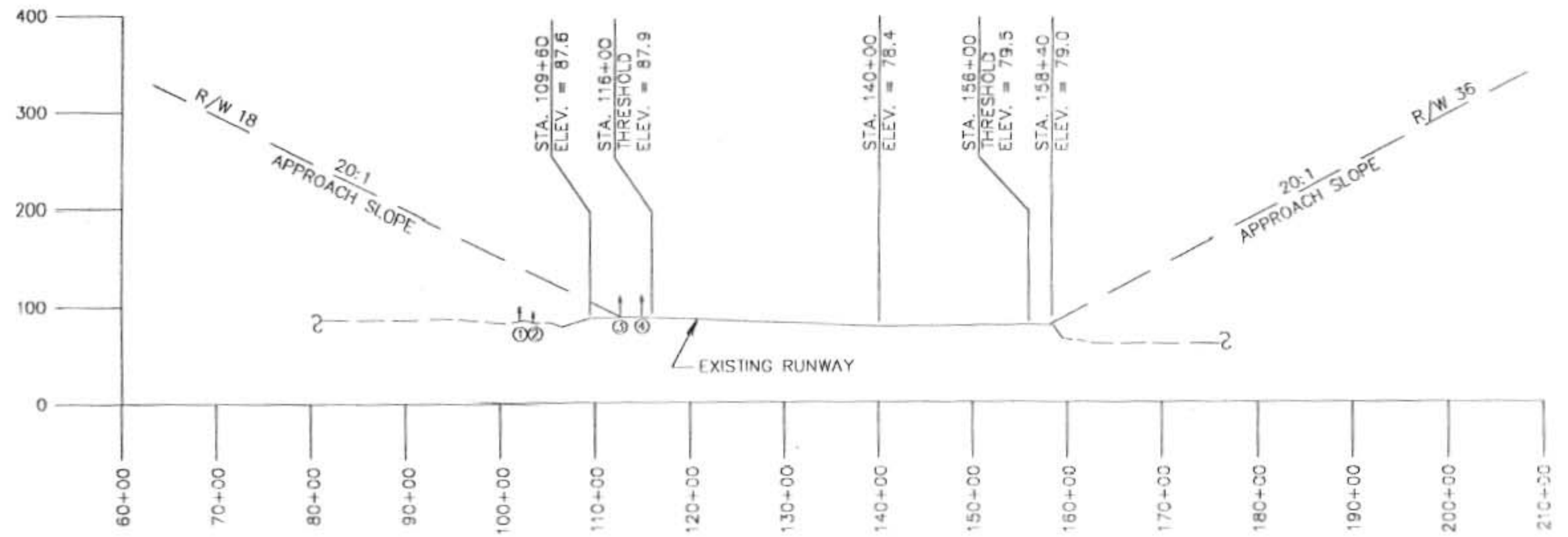
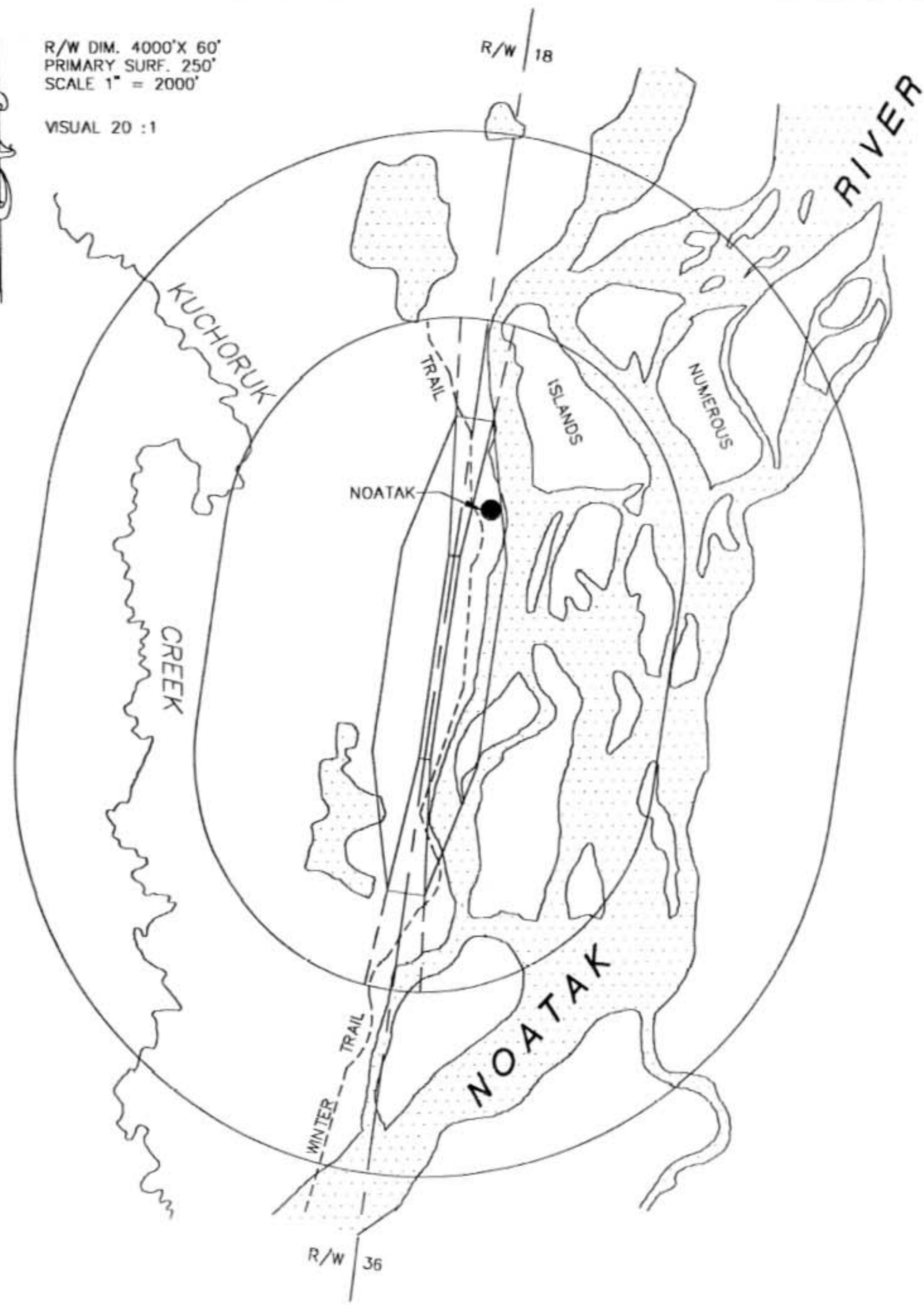
THIS DRAWING SUPERCEDES A.P DATED 7/24/86

NOATAK AIRPORT
AIRPORT LAYOUT PLAN

SHEET
1
OF
3

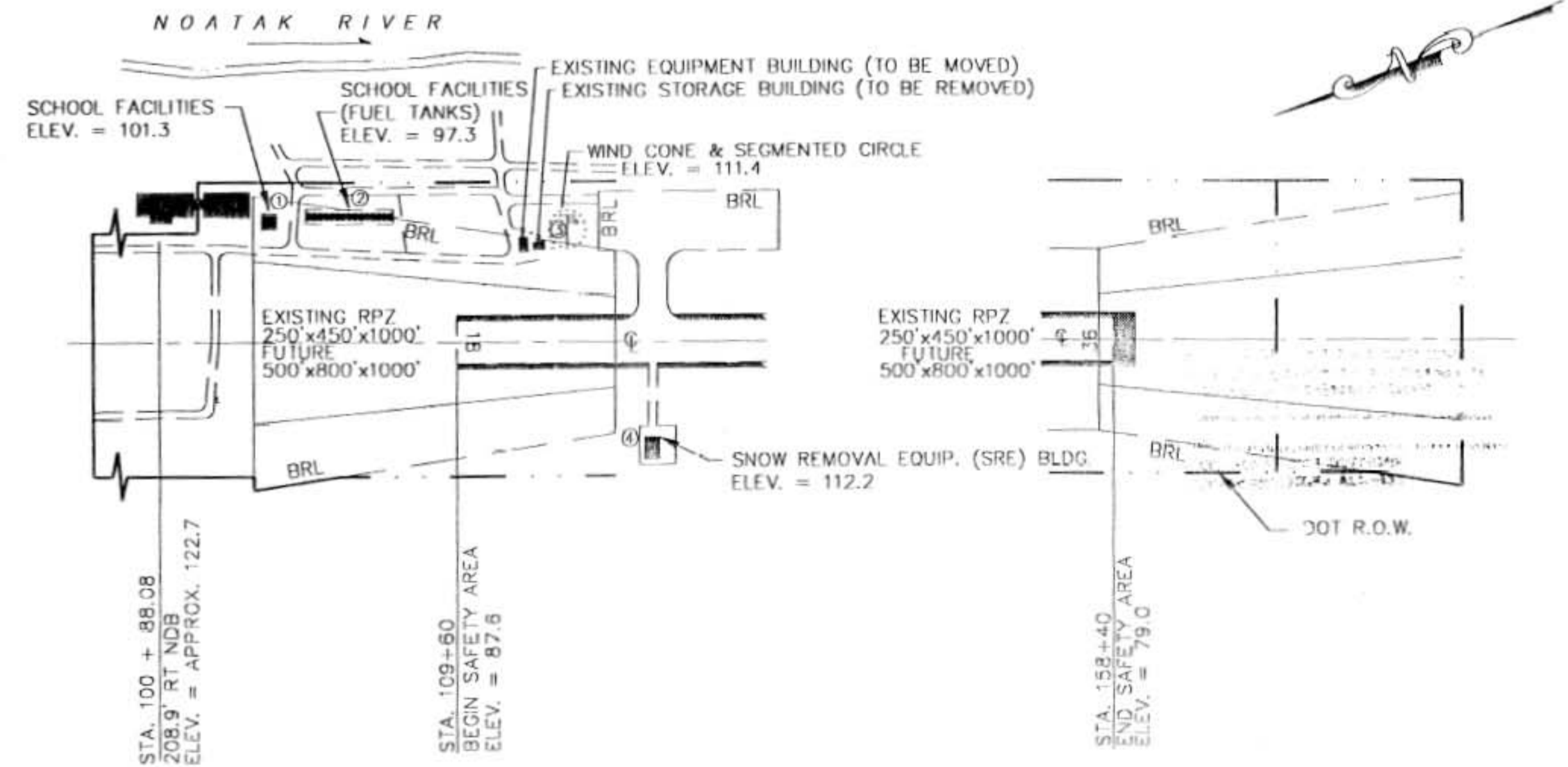
R/W DIM. 4000' X 60'
 PRIMARY SURF. 250'
 SCALE 1" = 2000'

VISUAL 20 : 1



RUNWAYS 18 & 36 APPROACH SLOPES

SCALE: HORZ. 1" = 1000'
 VERT. 1" = 100'



PLAN VIEW OF RPZ'S

SCALE: 1" = 300'

AIRPORT LAYOUT PLAN CONDITIONALLY APPROVED subject to conditions in ALP approval letter dated August 11, 1995
 By: *Janis W. [Signature]*
 FAA, AIRPORTS DIVISION, ALASKA REGION, ALL-600

NO TERRAIN PENETRATIONS OF FAR PART 77 SURFACES

FAR PART 77 PENETRATIONS

NO.	STRUCTURE	R/W LOCATION	ELEV.	PENETRATION
①	S.R.E. BLDG.	STA. 115+00, 270' RT.	112.2	+2.8 FEET

DEVIATIONS FROM STANDARD

ITEM	STANDARD	EXISTING	ULTIMATE

* NOTE: HORIZONTAL CONTROL BASED ON NAD 1927.

DESIGN G.R.

DRAWN C.A.B.

CHECKED D.H.

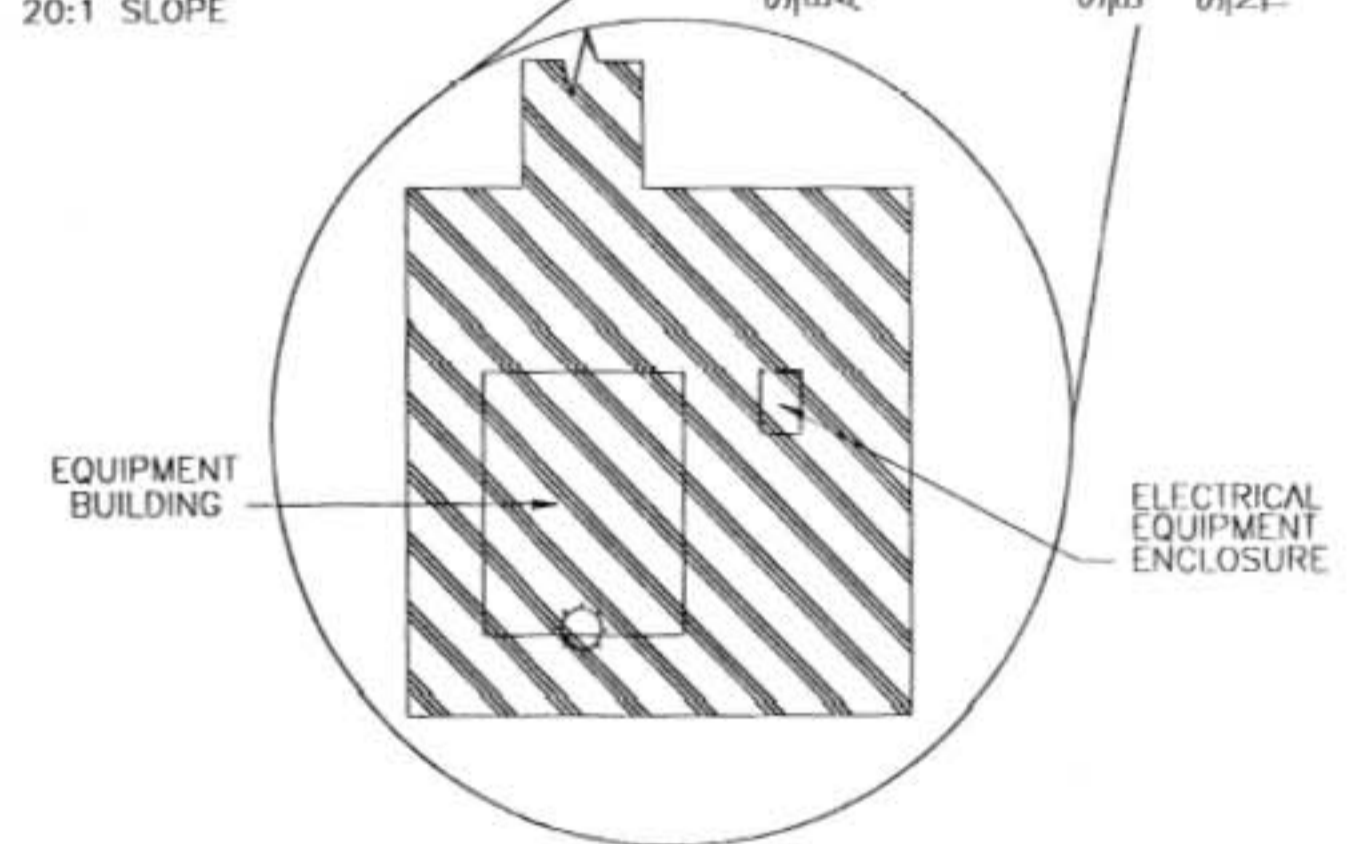
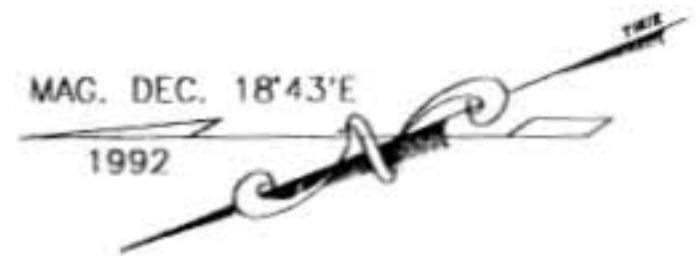
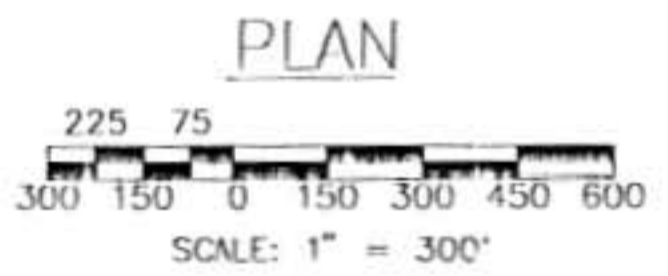
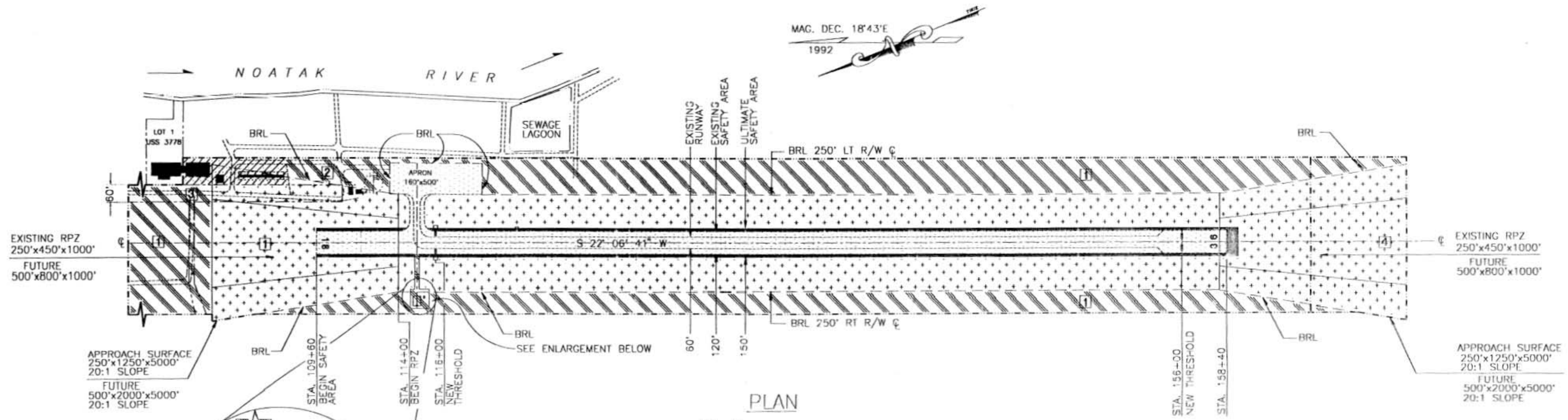
BY	DATE	REVISIONS

STATE OF ALASKA
 DEPARTMENT OF TRANSPORTATION AND PUBLIC FACILITIES
 NORTHERN REGION-WESTERN DISTRICT-DESIGN & CONSTRUCTION-AVIATION

APPROVED *Daniel D. Urbach* DATE 10-4-99
 DANIEL D. URBACH, P.E. AIRPORT DESIGN GROUP CHIEF

NOATAK AIRPORT
 OBSTRUCTIONS &
 AIRPORT AIRSPACE

SHEET
 2 / OF 3



AIRPORT LAYOUT PLAN CONDITIONALLY APPROVED subject to conditions in ALP approval letter dated August 11, 1995
 By: *[Signature]*
 FAA, AIRPORTS DIVISION, ALASKA REGION, ALL-600

LAND USE LEGEND	
NON-AVIATION USE AREA	
AVIATION/AIRPORT COMPATIBLE USE	
PRIVATE LAND	
AIRCRAFT OPERATIONS AREA	
CONTROLLED RUNWAY ENVIRONMENT	
ULTIMATE DEVELOPMENT	

LAND OCCUPANCY				
ITEM	OCCUPANT	ADA #	SQUARE FEET	EXP. DATE
1	DOT/TF	70109	160,018	9/30/2005
2	NORTHWEST ARCTIC BOROUGH	70284	73,456	6/1/12
3	NOATAK IRA COUNCIL	70667	-	-
4	MANA REGIONAL CORP.	-	-	-

DESIGN G.R.		
DRAWN C.A.B.		
CHECKED D.H.		
BY	DATE	REVISIONS

STATE OF ALASKA
 DEPARTMENT OF TRANSPORTATION AND PUBLIC FACILITIES
 NORTHERN REGION, WESTERN DISTRICT-DESIGN & CONSTRUCTION-AVIATION
 APPROVED *[Signature]* DATE 10-4-99
 DANIEL D. URBACH, P.E. AIRPORT DESIGN GROUP CHIEF

NOATAK AIRPORT
 LAND USE &
 LAND OCCUPANCY

SHEET
 3
 OF
 3