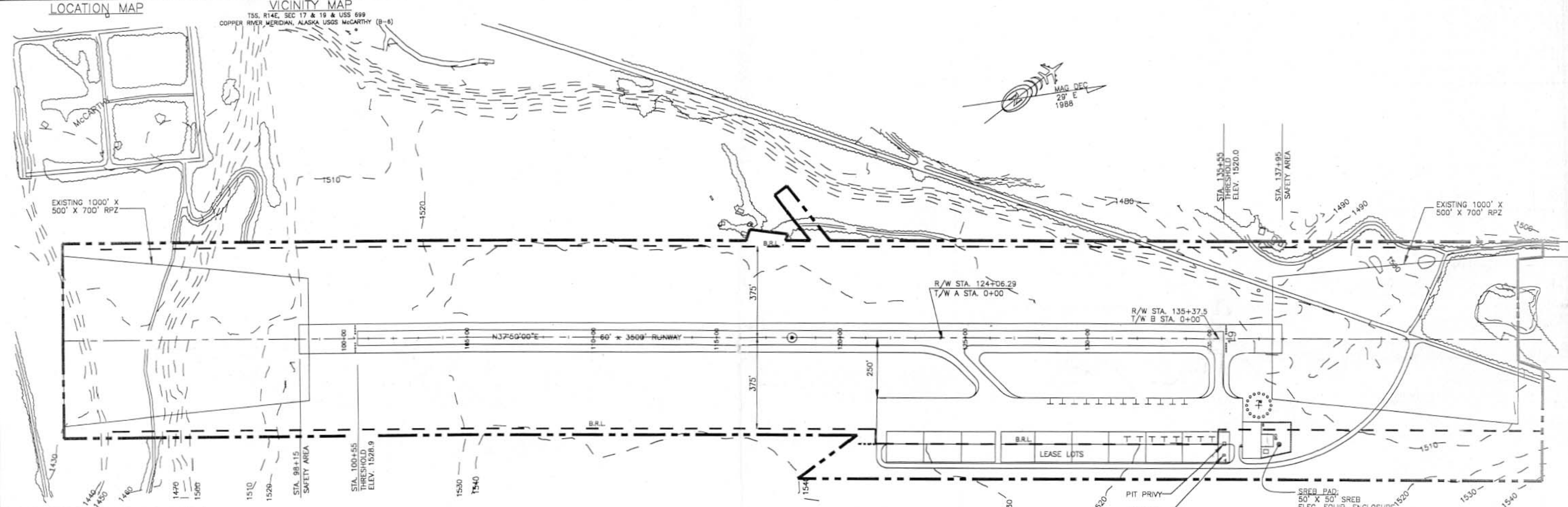
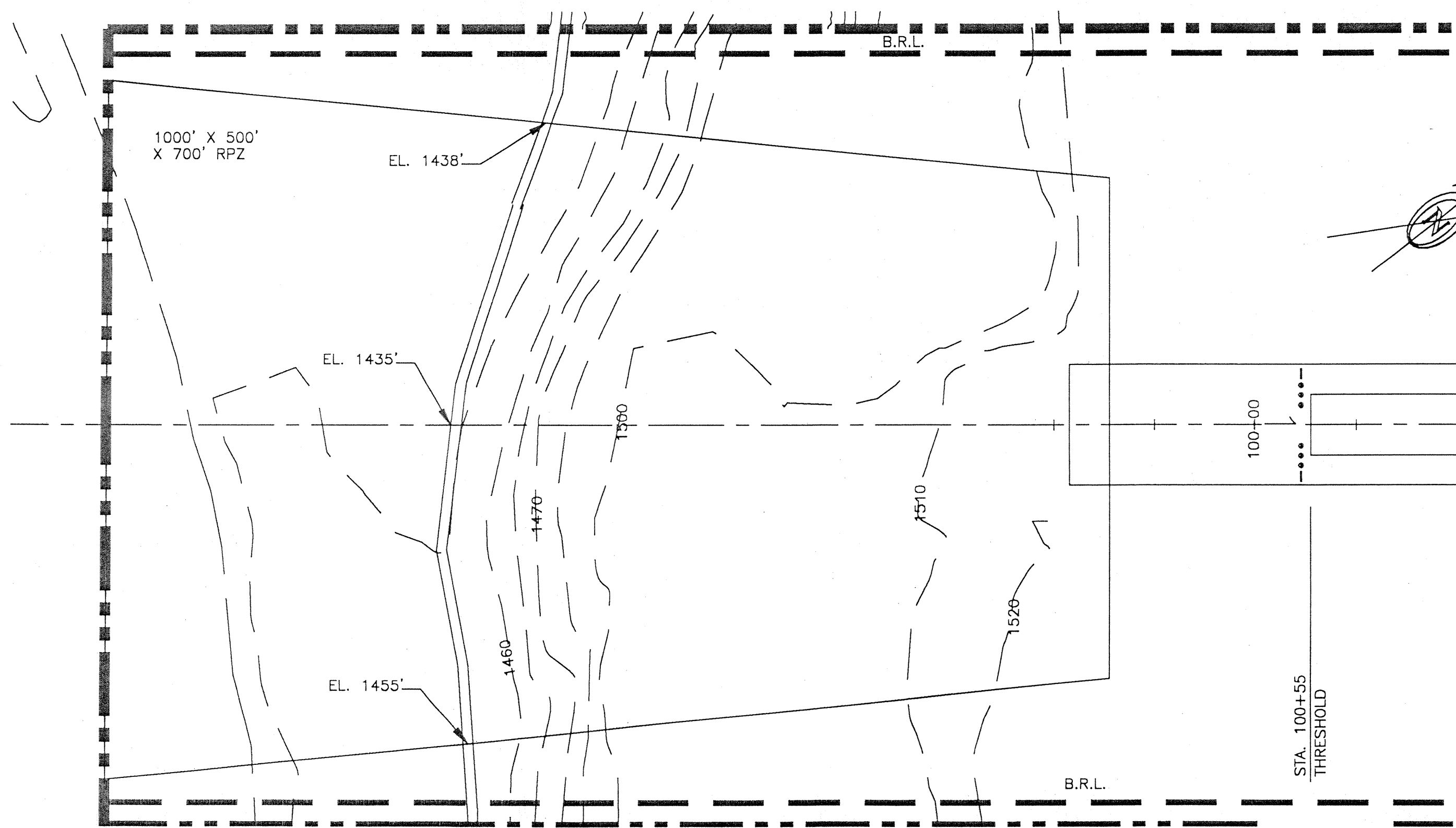
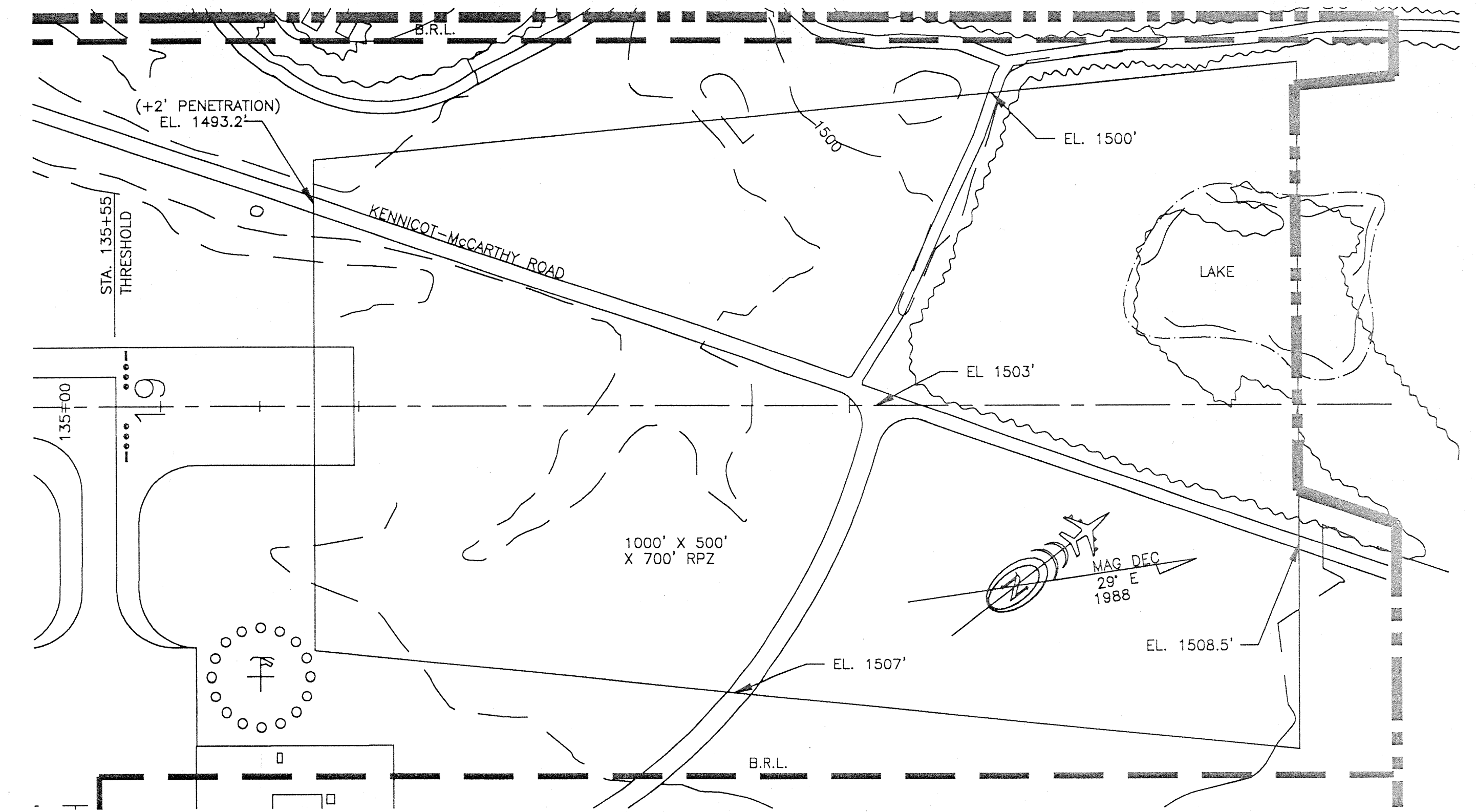


NO WIND DATA

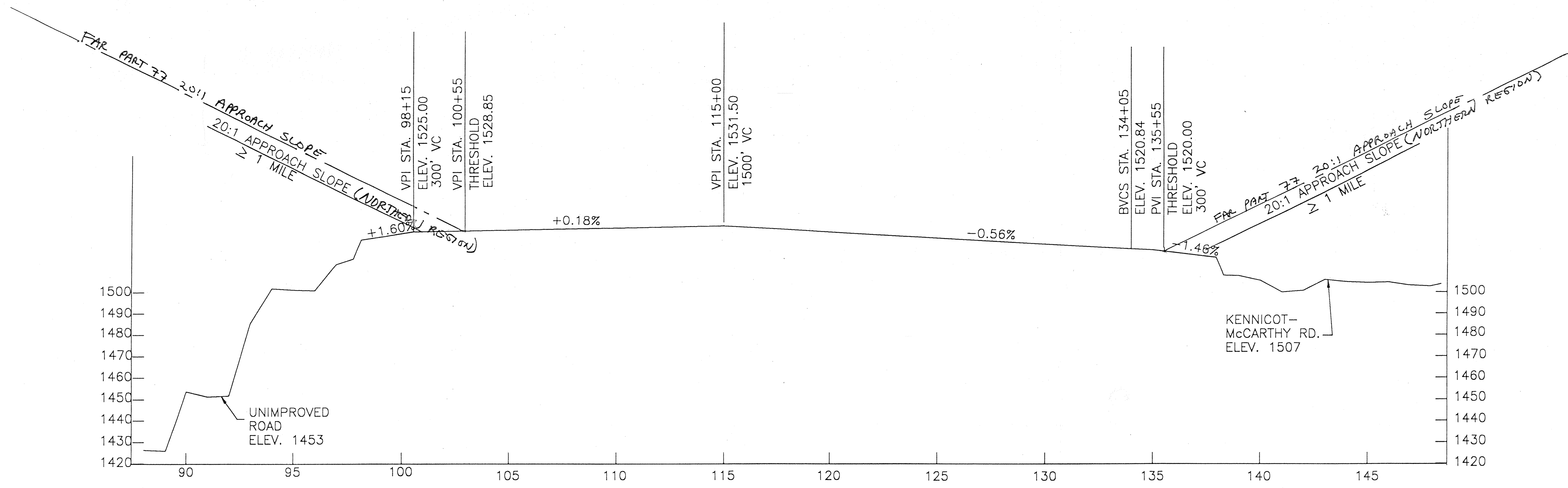




RPZ 1



RPZ 19



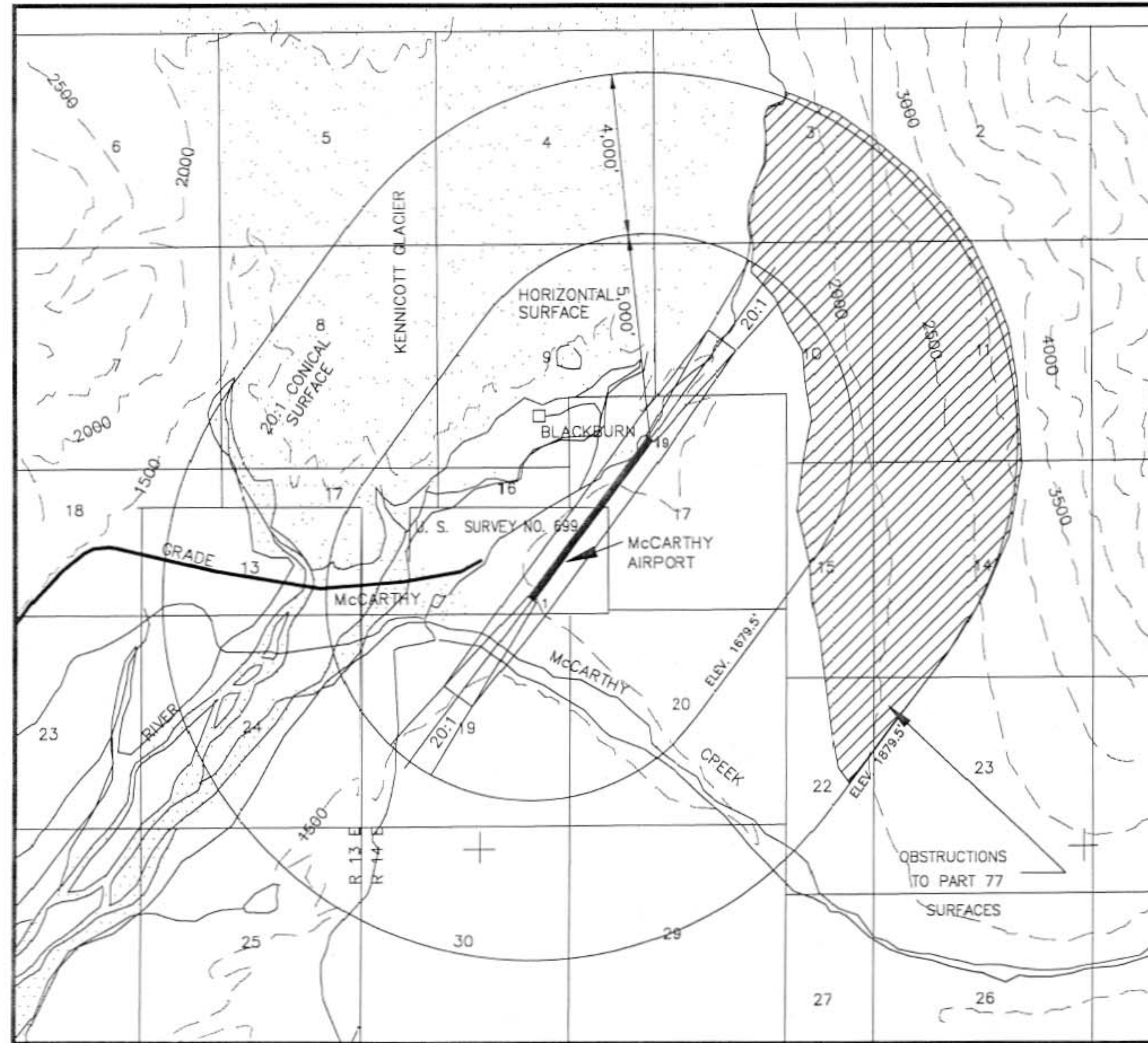
RUNWAY 1/19 PROFILE

|         |                  |
|---------|------------------|
| DESIGN  | RGS              |
| DRAWN   | CAT              |
| CHECKED | ELE              |
| CAT     | 5/27/98 AS-BUILT |
| BY      | DATE REVISIONS   |

STATE OF ALASKA  
 DEPARTMENT OF TRANSPORTATION AND PUBLIC FACILITIES  
 NORTHERN REGION—DESIGN AND CONSTRUCTION—AVIATION  
 APPROVED  
*Patricia D. Miller* DATE 5/27/98  
 PATRICIA D. MILLER, P.E. ACTING DESIGN GROUP CHIEF

LAYOUT PLAN Conditionally Approved:  
 By *MAIT FREEMAN*  
 AIRPORTS DIVISION, ALASKAN REGION  
 Date 6/18/98

McCARTHY AIRPORT  
 RPZ'S AND PROFILE



T5S, R14E, SEC 17 & 19 & USS 699  
 COPPER RIVER MERIDIAN, ALASKA USGS McCARTHY (B-6)

VICINITY MAP



|         |         |           |  |
|---------|---------|-----------|--|
| DESIGN  | RG5     |           |  |
| DRAWN   | CAT     |           |  |
| CHECKED | ELE     |           |  |
| CAT     | 5/27/98 | AS-BUILT  |  |
| BY      | DATE    | REVISIONS |  |

STATE OF ALASKA  
 DEPARTMENT OF TRANSPORTATION AND PUBLIC FACILITIES  
 NORTHERN REGION-DESIGN AND CONSTRUCTION-AVIATION

APPROVED  
*Patricia D. Miller* DATE 5/27/98  
 PATRICIA D. MILLER, P.E. ACTING DESIGN GROUP CHIEF

LAYOUT PLAN Conditionally Approved:  
 By *Mat Freeman* AIR-CRA  
 AIRPORTS DIVISION, ALASKAN REGION  
 Date 6/12/98

McCarthy AIRPORT  
 AIRSPACE

SHEET  
 3 OF  
 3