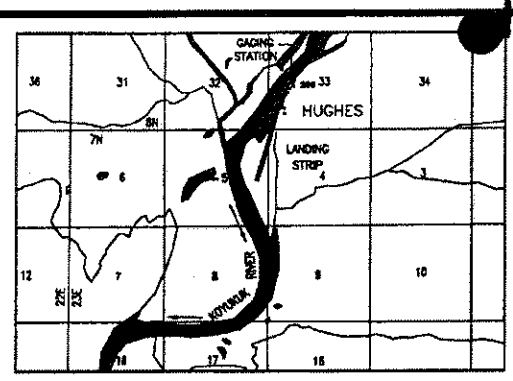
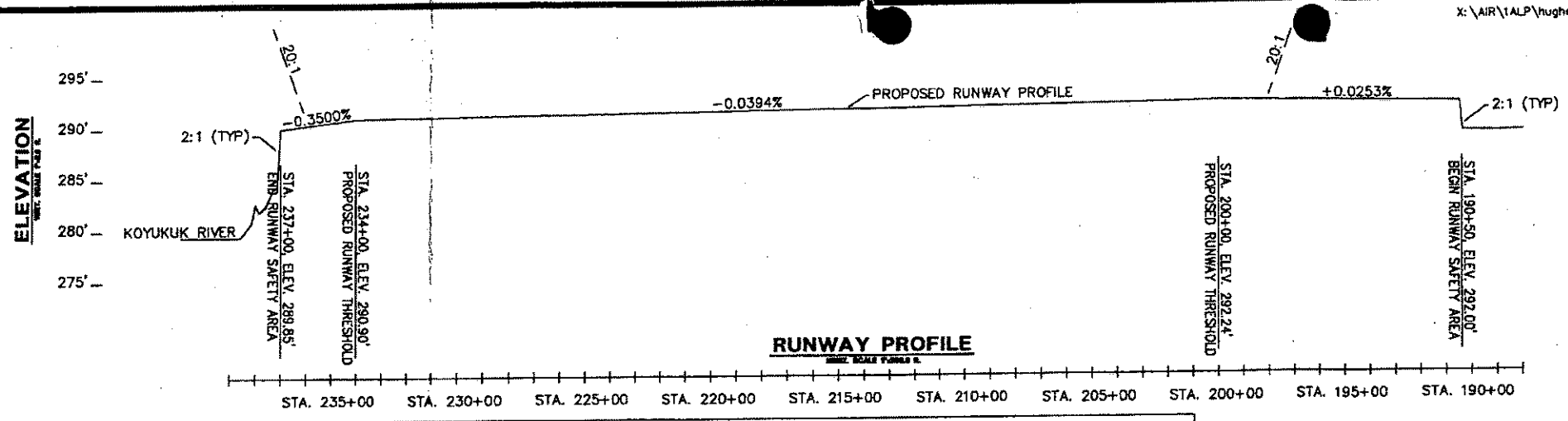


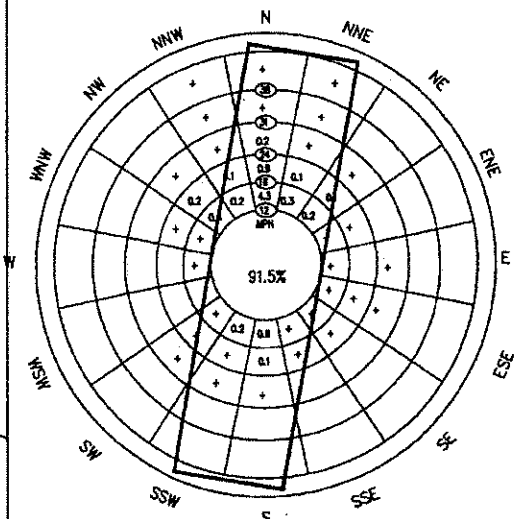
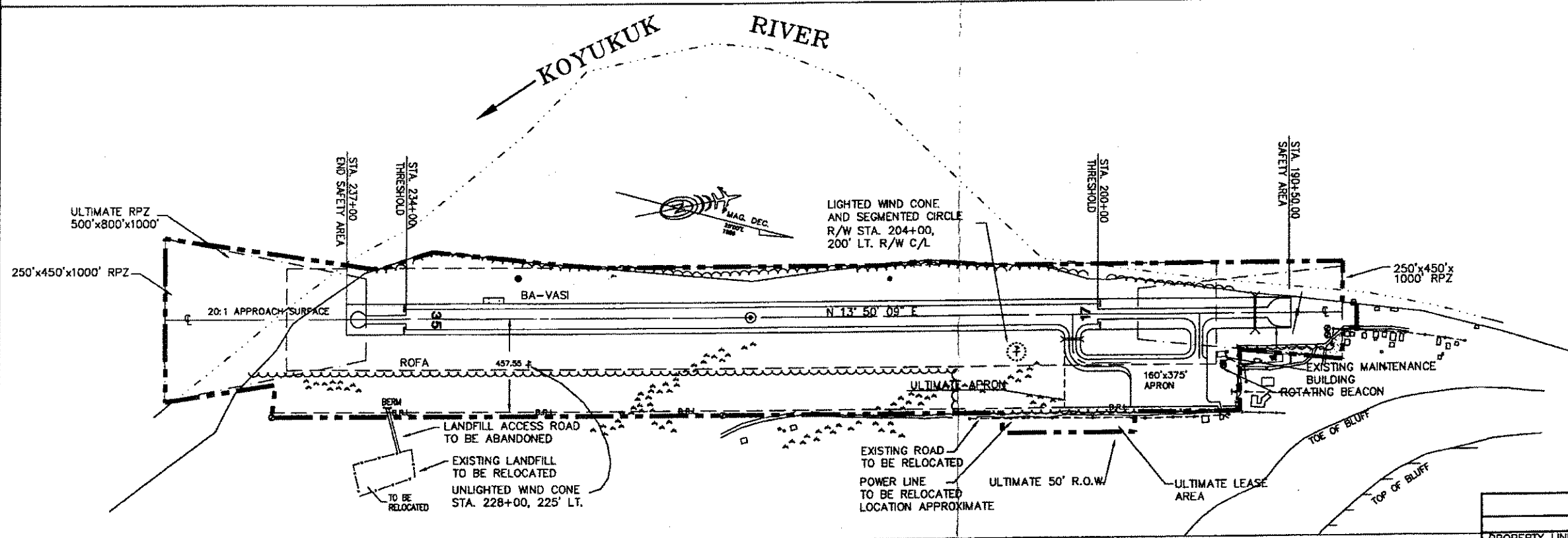
LOCATION MAP



VICINITY MAP
KATEEL RIVER MERIDIAN
SCALE 1"=5000'



RUNWAY PROFILE



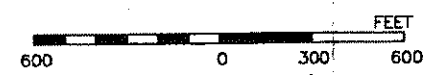
WINDROSE FOR HUGHES
+ INDICATES LESS THAN 0.1% OBSERVATIONS
PERIOD OF RECORD 1948 TO 1970
WIND COVERAGE = 99.2%

| LEGEND | | |
|------------------------------------|----------|------------------------|
| | EXISTING | ULTIMATE |
| PROPERTY LINE | --- | --- |
| BUILDING RESTRICTION LINE (B.R.L.) | --- | SAME |
| AVIGATION AND HAZARD EASEMENT | --- | --- |
| DEVELOPMENT | --- | --- |
| WIND CONE & SEGEMENTED CIRCLE | + | + |
| BUILDINGS | --- | --- |
| ROADWAYS | --- | --- |
| FENCING | --- | --- |
| AIRPORT REFERENCE POINT | ⊙ | SHORELINE/WATERLINE |
| ROTATING BEACON | ⊙ | CONTOUR LINE |
| BLM MONUMENTED CORNER | ⊙ | R/W OBJECT FREE AREA |
| POWER POLE | ⊙ | ROAD TO BE OBLITERATED |
| BA-VASI | ⊙ | |
| SWAMP | --- | THRESHOLD LIGHTS |
| CLEARING LIMITS | --- | |

| RUNWAY DATA | | |
|---------------------|------------|-------------|
| | EXISTING | ULTIMATE |
| R/W DIMENSIONS | 100'x3400' | SAME |
| R/W SAFETY AREA | 150'x4650' | SAME |
| % WIND COVERAGE | 99.2% | SAME |
| EFFECTIVE GRADIENT | -0.0394% | SAME |
| APPROACH SURFACES | 20:1 | 20:1 |
| INSTRUMENT RUNWAY | NONE | NONE |
| RUNWAY SURFACE TYPE | GRAVEL | GRAVEL |
| PAVEMENT STRENGTH | N/A | N/A |
| T/W DIMENSIONS | 35'x650' | SAME |
| T/W SAFETY AREA | 79'x650' | SAME |
| APRON DIMENSIONS | 160'x375' | 160'x562.5' |
| R/W DIMENSIONS | | |

| AIRPORT DATA | | |
|----------------------------------|--------------|----------|
| | EXISTING | ULTIMATE |
| AIRPORT ELEVATION (MSL) | 281.70' | SAME |
| AIRPORT REFERENCE CODE | B-II | SAME |
| AIRPORT REFERENCE POINT (A.R.P.) | | |
| LAT. | 66°-02'-30" | |
| LONG. | 154°-15'-36" | |
| RUNWAY LIGHTING | MIRL | SAME |
| TAXIWAY LIGHTING | MITL | SAME |
| NAVIGATION AIDS | BA-VASI | BA-VASI |
| COMMUNICATION AIDS | NONE | NONE |
| MEAN TEMP. HOTTEST MONTH | 70°F | SAME |

NOTES
NO OFZ OBJECT PENETRATIONS.
NO THRESHOLD SITING SURFACE
OBJECT PENETRATIONS.



| | |
|-------------|------------------|
| DESIGN_PMS | |
| DRAWN_PMS | |
| CHECKED_PKS | |
| CAT | 7/14/99 AS-BUILT |
| BY | DATE |
| | REVISIONS |

STATE OF ALASKA
DEPARTMENT OF TRANSPORTATION AND PUBLIC FACILITIES
NORTHERN REGION - DESIGN AND ENGINEERING SERVICES
APPROVED
s/ Daniel D. Urbach DATE 8/1/90
DANIEL D. URBACH, P.E. AIRPORT DESIGN GROUP CHIEF

AS-BUILT
AIRPORT LAYOUT PLAN APPROVED
BY LETTER DATED: 10/31/02
Pat Oien

HUGHES AIRPORT
AIRPORT LAYOUT PLAN

SHEET
1 OF 1