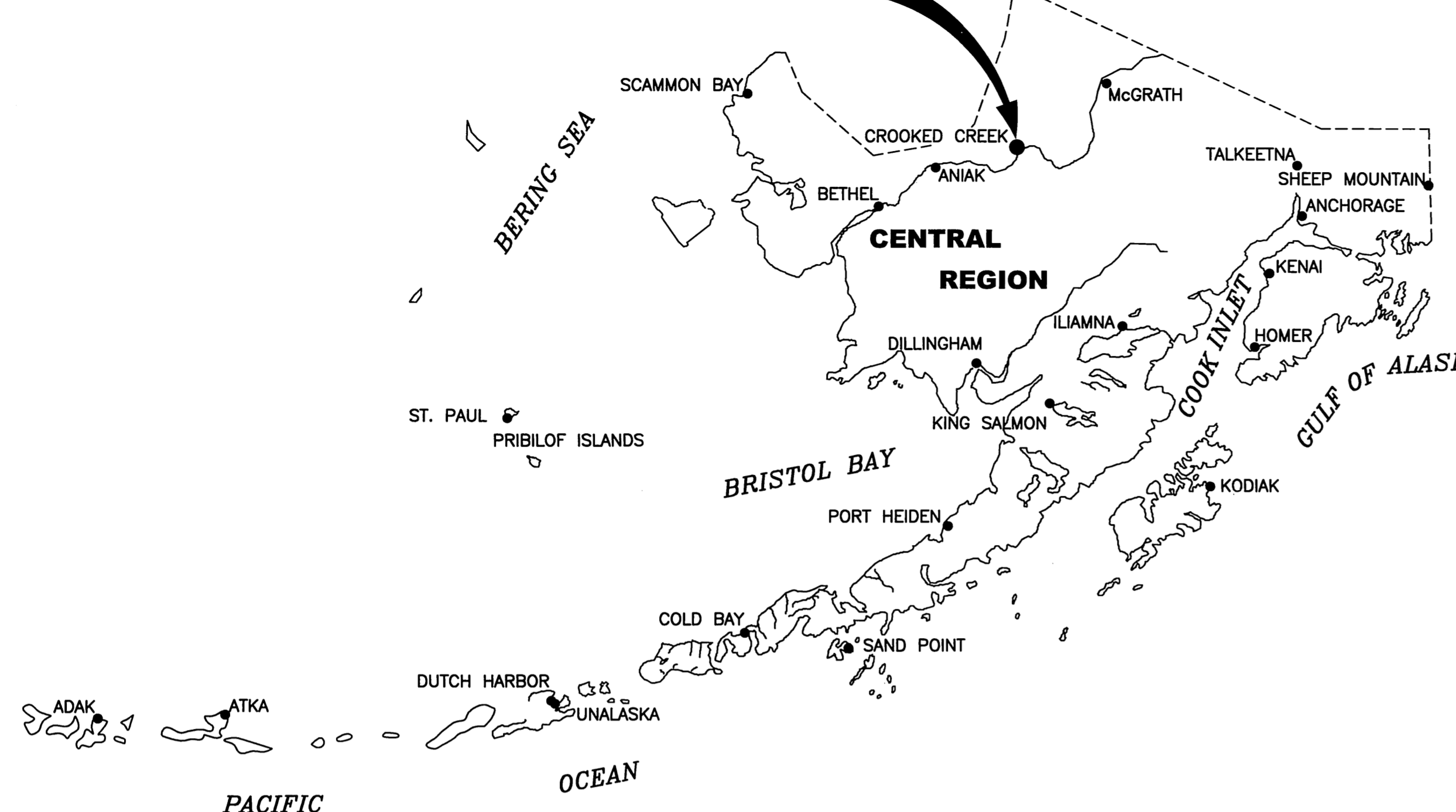


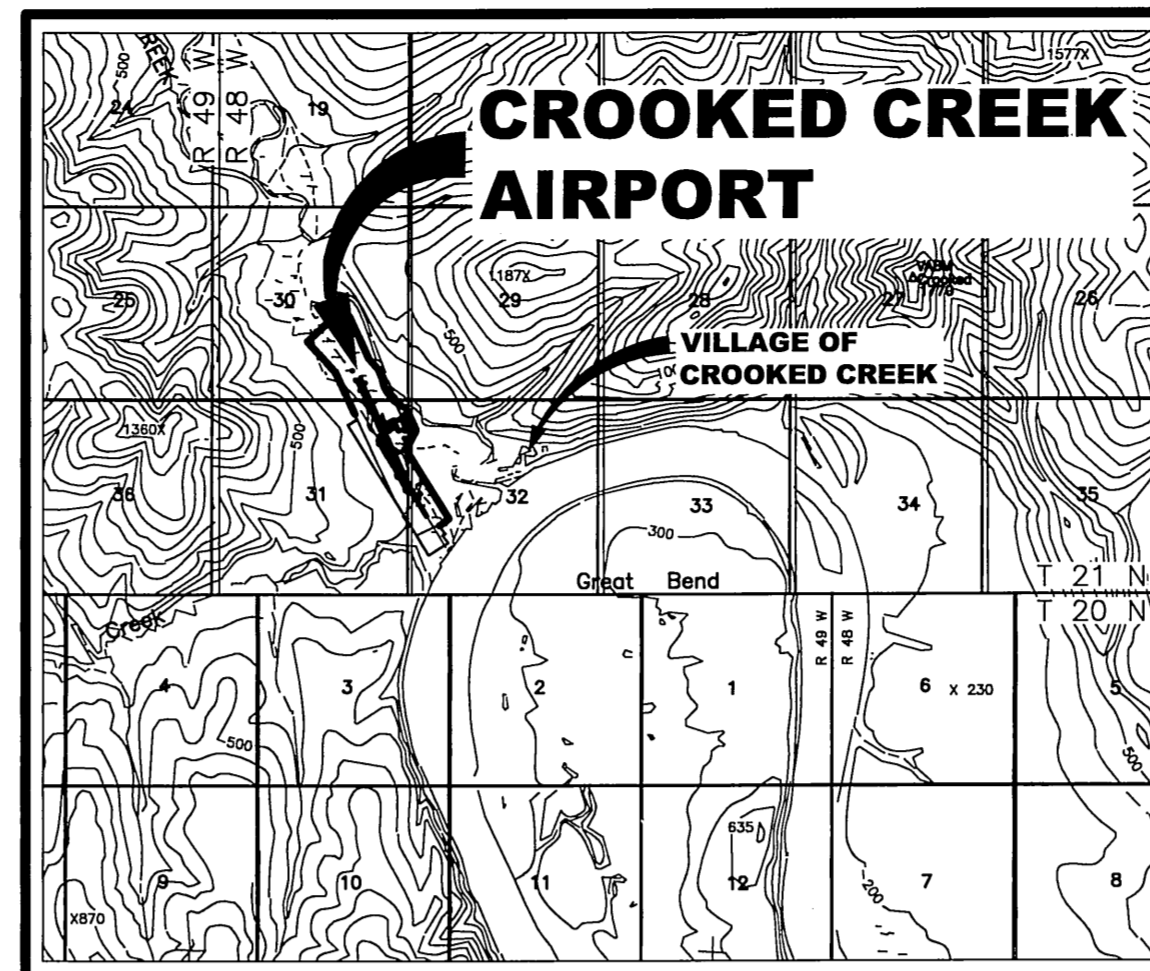
Prepared By: PDC, INC. ENGINEERS
 Designed By: MCV
 Drawn By: BWD
 Checked By: RLC
 Date Plotted: 12/09/2010, 2:28 PM
 Layout Name: Title SH01
 File Name: W:\Projects\Crooked Creek\ALP\ALP from PDC 12-07-10\00100LPP06088.dwg

CROOKED CREEK AIRPORT



ALASKA CENTRAL REGION LOCATION MAP

NOT TO SCALE



VICINITY MAP



T 21 N, R 48 W, SEC. 30, 31, 32
SEWARD MERIDIAN
U.S.G.S. SLEETMUTE (D-6), ALASKA



AIRPORT DATA TABLE

ITEM	EXISTING	NEAR-TERM	ULTIMATE
ICAO IDENTIFIER	NONE	NONE	NONE
NATIONAL AIRPORT IDENTIFIER	CJX	CJX	CJX
FAA SITE NUMBER	50132.1*A	50132.1*A	50132.1*A
AIRPORT ELEVATION (NAVD88)	174.2	177.2	177.2
AIRPORT REFERENCE CODE	*A I	B II	B II
MEAN MAX. TEMPERATURE, HOTTEST MONTH	69.7°F, JULY	69.7°F, JULY	69.7°F, JULY
AIRPORT AND TERMINAL NAVIGATION AIDS	NONE	AWOS, GPS, ROTATING BEACON	AWOS, GPS, ROTATING BEACON
TAXIWAY LIGHTING/MARKING	NONE / NA	M.I. / EDGE	M.I. / EDGE
OBSTRUCTION SURVEY SOURCE & TYPE	NONE	NVG	NVG
MAGNETIC DECLINATION, YEAR, RATE OF CHANGE		16°07'E, 2009, 0°13' (W)/YEAR	

* SMALL AIRCRAFT EXCLUSIVELY

RUNWAY 13/31 DATA TABLE

ITEM	EXISTING	NEAR-TERM	ULTIMATE
RUNWAY TYPE	UTILITY OR OTHER THAN UTILITY	UTILITY	UTILITY
FAR PART 77 APPROACH CATEGORY (V, NPI, P)	V / V		
APPROACH SURFACES	20:1 / 20:1		
VISIBILITY MINIMUM	1 SM		
RUNWAY SURFACE	GRAVEL		
PAVEMENT STRENGTH SW,DW,DTW,DDTW x1000lbs	N/A		
AIRCRAFT APPROACH CATEGORY	A		
AIRPLANE DESIGN GROUP	I		
MEAN GEODETIC BEARING	N32°08'19"W		
EFFECTIVE GRADE	0.75%		
TOUCHDOWN ELEVATION (NAVD88)	174.2/174.2		
RUNWAY DIMENSIONS	60' X 2000'		
RUNWAY SAFETY AREA (RSA) DIMENSIONS	120'x2480'		
LENGTH BEYOND R/W END	240' / 240'		
RUNWAY PROTECTION ZONE (RPZ) DIMENSIONS	250' X 450' X 1000'		
RUNWAY OBJECT FREE AREA (OFA) DIMENSIONS	250'x2480'		
LENGTH BEYOND R/W END OR STOPWAY	240' / 240'		
RUNWAY OBSTACLE FREE ZONE (OFZ) DIMENSIONS	120'x2400'		
RUNWAY LIGHTING	NONE		
RUNWAY MARKING TYPE	NONE		
RUNWAY VISUAL APPROACH AIDS	NONE		

ABANDONED

ABANDONED

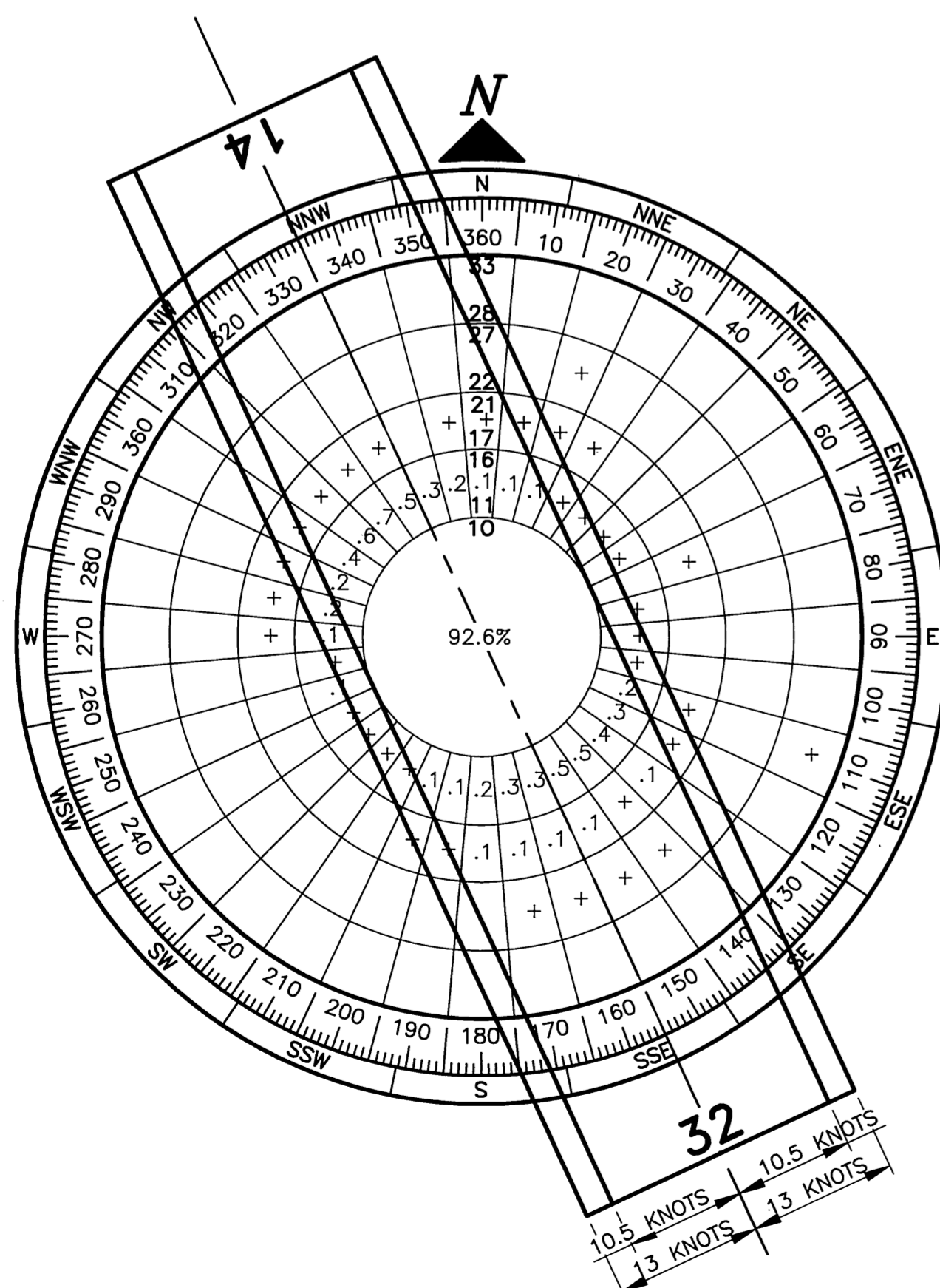
RUNWAY 14/32 DATA TABLE

ITEM	EXISTING	NEAR-TERM	ULTIMATE
RUNWAY TYPE	UTILITY OR OTHER THAN UTILITY	UTILITY	UTILITY
FAR PART 77 APPROACH CATEGORY (V, NPI, P)	NPI / NPI	NPI / NPI	NPI / NPI
APPROACH SURFACES	20:1 / 20:1	20:1 / 20:1	20:1 / 20:1
VISIBILITY MINIMUM	1 SM / 1 SM	1 SM / 1 SM	1 SM / 1 SM
RUNWAY SURFACE	GRAVEL	GRAVEL	GRAVEL
PAVEMENT STRENGTH SW,DW,DTW,DDTW x1000lbs	N/A	N/A	N/A
AIRCRAFT APPROACH CATEGORY	B	B	B
AIRPLANE DESIGN GROUP	II	II	II
MEAN GEODETIC BEARING	N25°08'28"W	N25°08'30"W	N25°08'30"W
EFFECTIVE GRADE	0.40%	0.34%	0.34%
TOUCHDOWN ELEVATION (NAVD88)	176.5/177.2	175.3/177.2	175.3/177.2
RUNWAY DIMENSIONS	75' X 3300'	75' X 3800'	75' X 3800'
RUNWAY SAFETY AREA (RSA) DIMENSIONS	150'x3900'	150'x4400'	150'x4400'
LENGTH BEYOND R/W END	300' / 300'	300' / 300'	300' / 300'
RUNWAY PROTECTION ZONE (RPZ) DIMENSIONS	500' X 700' X 1000'	500' X 700' X 1000'	500' X 700' X 1000'
RUNWAY OBJECT FREE AREA (OFA) DIMENSIONS	500'x3900'	500'x4400'	500'x4400'
LENGTH BEYOND R/W END OR STOPWAY	300' / 300'	300' / 300'	300' / 300'
RUNWAY OBSTACLE FREE ZONE (OFZ) DIMENSIONS	250'x3700'	250'x4200'	250'x4200'
RUNWAY LIGHTING	MIRL	MIRL	MIRL
RUNWAY MARKING TYPE	NONE	NONE	NONE
RUNWAY VISUAL APPROACH AIDS	PAPI, REIL	PAPI, REIL	PAPI, REIL

NOT APPLICABLE

GEOGRAPHIC COORDINATES TABLE

ITEM	EXISTING LATITUDE	EXISTING LONGITUDE	NEAR TERM LATITUDE	NEAR TERM LONGITUDE	ULTIMATE LATITUDE	ULTIMATE LONGITUDE
ARP	61°52'08"N	158°08'02"W	61°52'19"N	158°08'12"W	61°52'22"N	158°08'15"W
THRESHOLD RW 13	61°52'16.05"N	158°08'12.75"W	-	-	-	-
THRESHOLD RW 31	61°51'59.37"N	158°07'50.56"W	-	-	-	-
THRESHOLD RW 14	-	-	61°52'34.17"N	158°08'27.12"W	61°52'38.63"N	158°08'31.55"W
THRESHOLD RW 32	-	-	61°52'04.75"N	158°07'57.87"W	61°52'04.75"N	158°07'57.87"W



WIND DATA TABLE

RUNWAY	10.5 kt	13 kt	16 kt	20 kt
14/32	99.13%	99.68%	99.95%	99.99%

DATA SOURCE: DRYDEN INSTRUMENTATION ANCHORAGE, ALASKA
 PERIOD: FEBRUARY 3, 2002 THRU MARCH 26, 2003 (9,977 OBSERVATIONS)

LEGEND

ITEM	EXISTING	NEAR-TERM	ULTIMATE
AIRPORT REFERENCE POINT (A.R.P.)			
ANTENNA			
BLUFF			
BUILDINGS			
BUILDING RESTRICTION LINE			
DEVELOPMENT			
FENCE			
PAPI			
PROPERTY LINE			
REIL			
ROADWAYS			
ROTATING BEACON			
SHORELINE			
SURVEY MONUMENT			
THRESHOLD MARKERS/LIGHTS			
TOPOGRAPHIC CONTOURS			
TREE (LARGE SINGLE)			
TREELINE			
VASI			
WIND CONE			
WIND CONE AND SEGMENTED CIRCLE			

DRAWING INDEX

SHT #	TITLE
1	DATA
2	EXISTING LAYOUT
3	NEAR-TERM LAYOUT
4	ULTIMATE LAYOUT
5	EXISTING INNER PORTION OF THE APPROACH SURFACE
6	NEAR-TERM INNER PORTION OF THE APPROACH SURFACE
7	ULTIMATE INNER PORTION OF THE APPROACH SURFACE
8	AIRPORT AIRSPACE, 14 CFR, PART 77
9	AIRPORT PROPERTY MAP

BY DATE REVISION

APPROVED: *K. Kim Rice* DATE: 12-13-2010
 K. KIM RICE, P.E. PRECONSTRUCTION ENGINEER
 RECOMMENDED: *Harvey M. Douthett* DATE: 12-18-2010
 HARVEY M. DOUTHETT, P.E. DESIGN SECTION CHIEF

AIRPORT LAYOUT PLAN CONDITIONAL APPROVAL SUBJECT TO ALP APPROVAL LETTER DATED 6/19/06
 FAA AIRSPACE REVIEW NUMBER 05-AAL-277474

DATE: 1/20/11
 FAA, AIRPORTS DIVISION ALASKAN REGION, AAL

STATE OF ALASKA
 DEPARTMENT OF TRANSPORTATION
 AND PUBLIC FACILITIES
 CENTRAL REGION

CROOKED CREEK AIRPORT
 CROOKED CREEK, ALASKA
 AIRPORT LAYOUT PLAN

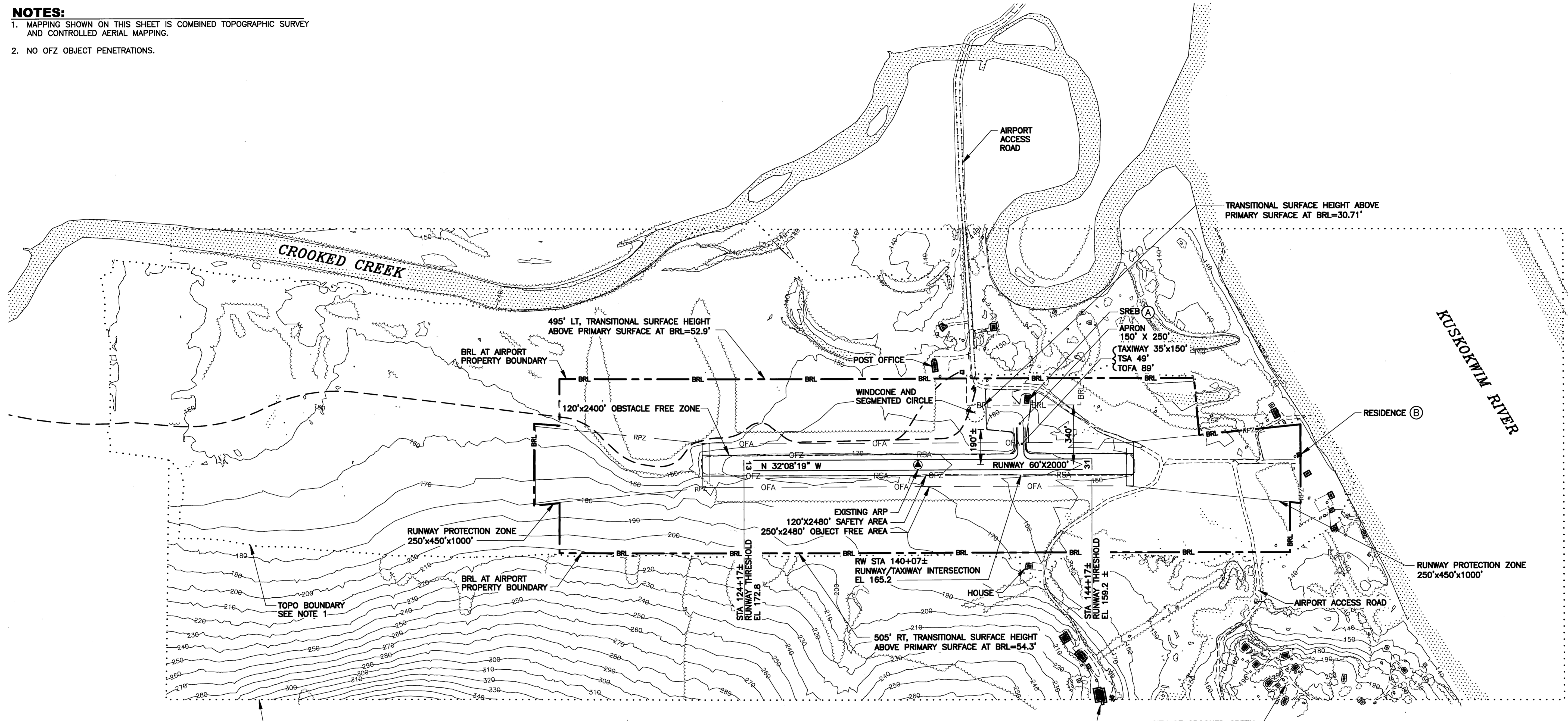
DATA

DATE: 12/09/2010
 SHEET: 1 OF 9

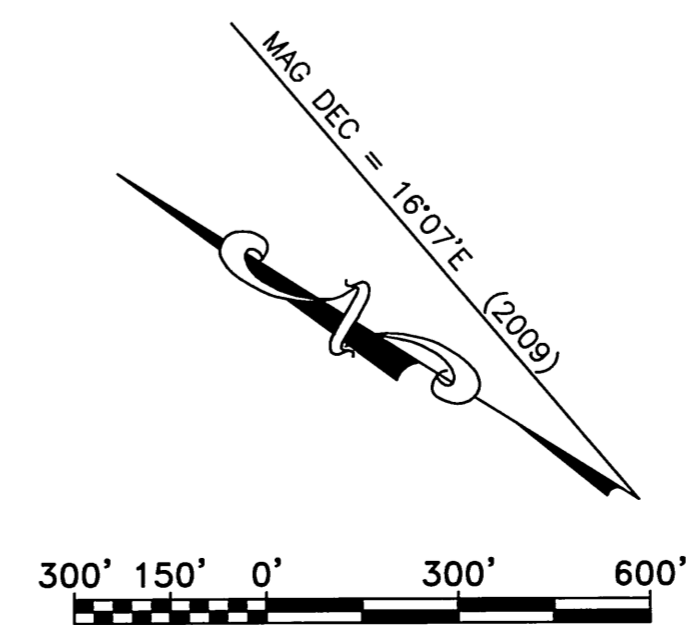
NOTES:

- MAPPING SHOWN ON THIS SHEET IS COMBINED TOPOGRAPHIC SURVEY AND CONTROLLED AERIAL MAPPING.
- NO OFZ OBJECT PENETRATIONS.

Date Plotted: 12/09/2010, 2:23 PM
 Layout Name: 2
 File Name: W:\Projects\Crooked Creek\ALP\ALP from PDC 12-07-10\020200L\F06088.dwg
 Designed By: MCV
 Drawn By: BWD
 Checked By: RLC



BUILDING ID #	DESCRIPTION	STA/OFFSET	TOP ELEV (MSL)	OBSTRUCTION MARKING
Ⓐ	SREB	140+41.75/351.04' LT	179.51'	NONE
Ⓑ	RESIDENCE	156+09.77/52.64' LT	168.98'	NONE



BY	DATE	REVISION

STATE OF ALASKA
DEPARTMENT OF TRANSPORTATION
AND PUBLIC FACILITIES
CENTRAL REGION

CROOKED CREEK AIRPORT
 CROOKED CREEK, ALASKA
 AIRPORT LAYOUT PLAN
 EXISTING LAYOUT

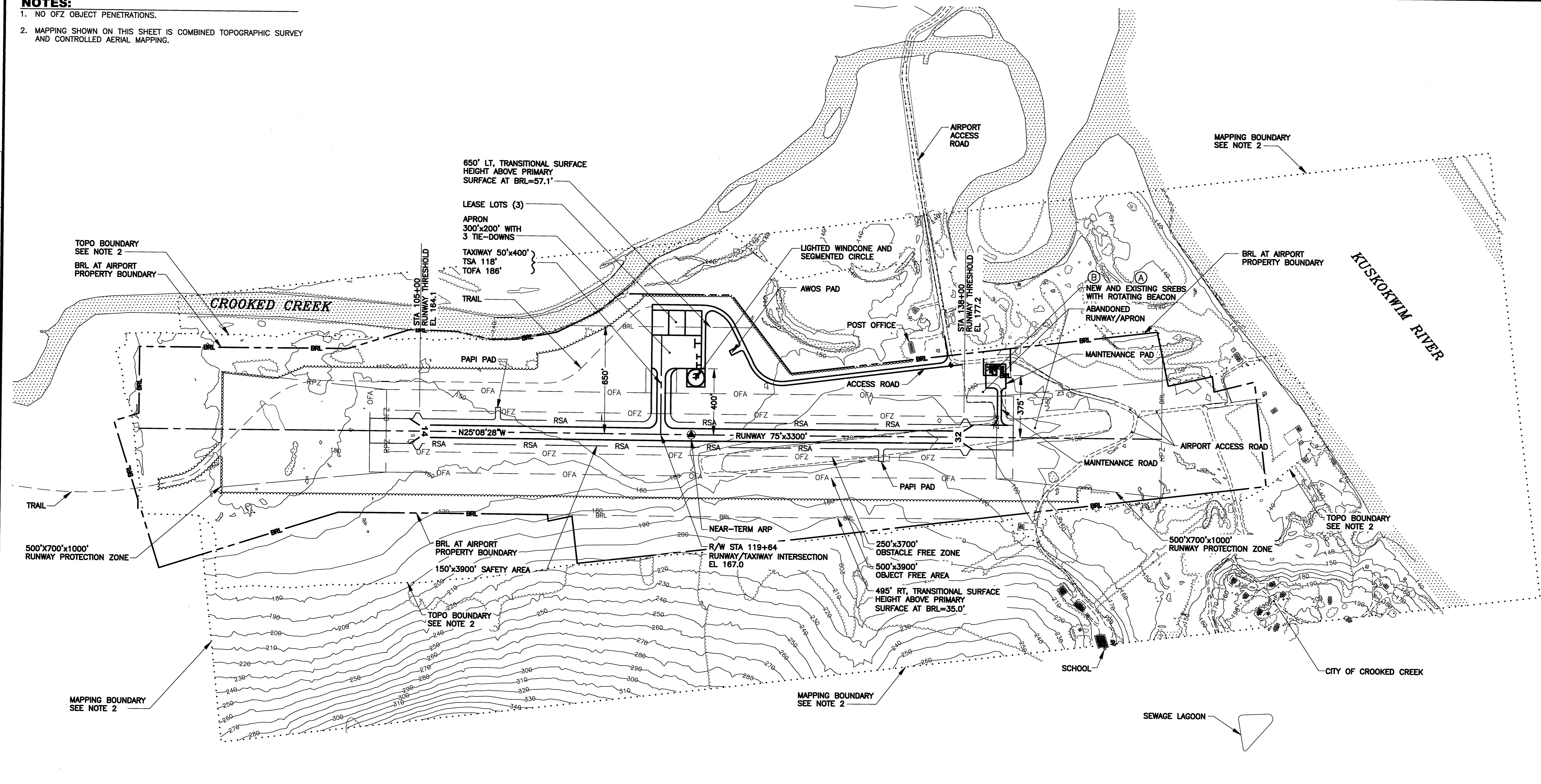
DATE:	12/09/2010.
SHEET:	2 OF 9

NOTES:

1. NO OFZ OBJECT PENETRATIONS.
2. MAPPING SHOWN ON THIS SHEET IS COMBINED TOPOGRAPHIC SURVEY AND CONTROLLED AERIAL MAPPING.

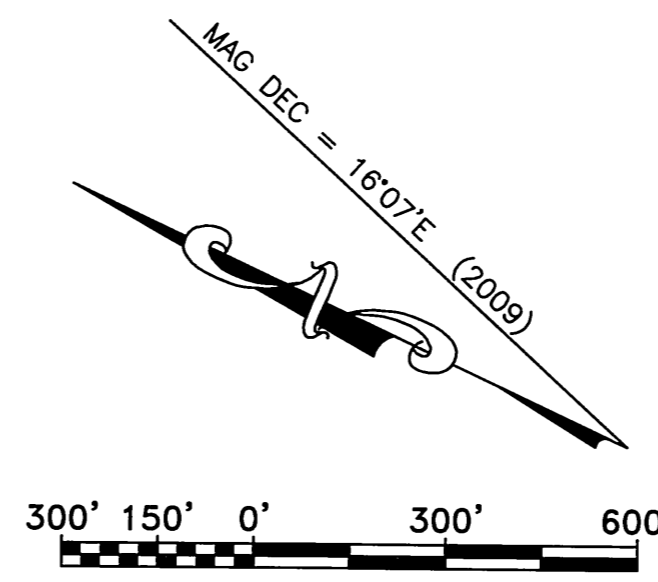
Date Plotted: 12/09/2010, 2:31 PM
 Layout Name: 3
 File Name: W:\Projects\Crooked Creek\ALP from PDC 12-07-10\CD3061.PDF6088.dwg

Designed By: MCY
 Drawn By: BWD
 Checked By: RLC



BUILDING DATA TABLE

BUILDING ID #	DESCRIPTION	STA/OFFSET	TOP ELEV (MSL)	OBSTRUCTION MARKING
(A)	SREB, EXISTING	140+28.54/388.27' LT	179.51'	NONE
(B)	SREB, NEW	139+86.71/380' LT	184.00'	NONE



BY	DATE	REVISION

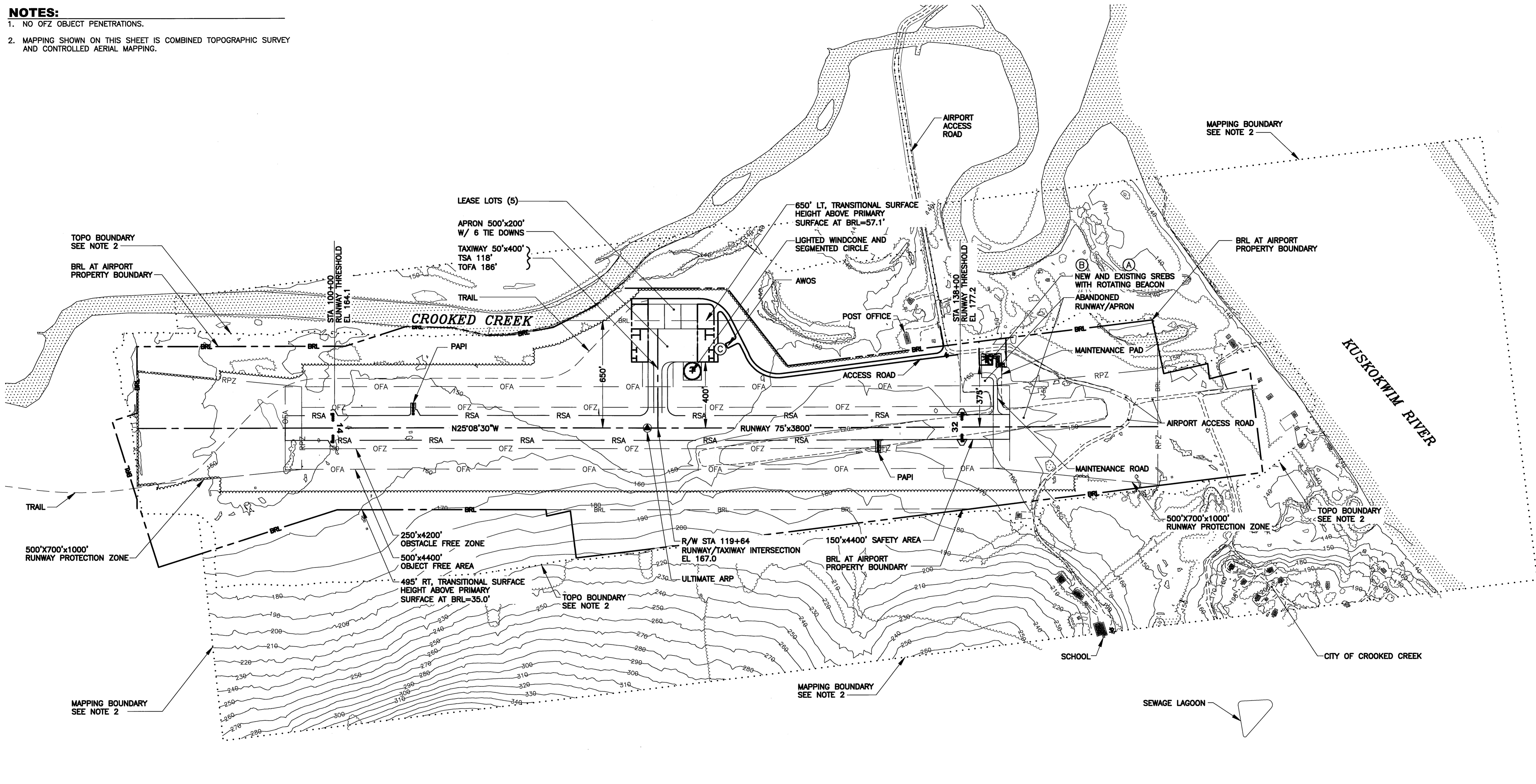
STATE OF ALASKA
DEPARTMENT OF TRANSPORTATION
AND PUBLIC FACILITIES
CENTRAL REGION

CROOKED CREEK AIRPORT
 CROOKED CREEK, ALASKA
 AIRPORT LAYOUT PLAN
 NEAR-TERM LAYOUT

DATE: 12/09/2010
SHEET: 3 OF 9

NOTES:

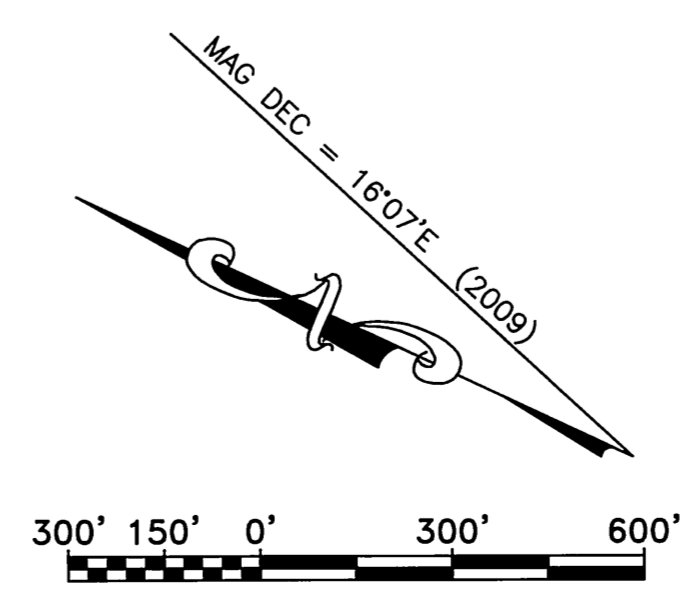
1. NO OFZ OBJECT PENETRATIONS.
2. MAPPING SHOWN ON THIS SHEET IS COMBINED TOPOGRAPHIC SURVEY AND CONTROLLED AERIAL MAPPING.



Date Plotted: 12/09/2010, 2:32 PM
 Layout Name: 4
 File Name: W:\Projects\Crooked Creek\ALP\ALP from PDC 12-07-10\033661\F06088.dwg
 Designed By: MCY
 Drawn By: BWD
 Checked By: RLC

BUILDING DATA TABLE

BUILDING ID #	DESCRIPTION	STA/OFFSET	TOP ELEV (MSL)	OBSTRUCTION MARKING
(A)	SREB, EXISTING	140+28.54/388.27' LT	179.51'	NONE
(B)	SREB, NEW	139+86.71/380' LT	184.00'	NONE
(C)	AWOS	123+91.41/500.80' LT	188.36'	NONE



BY	DATE	REVISION

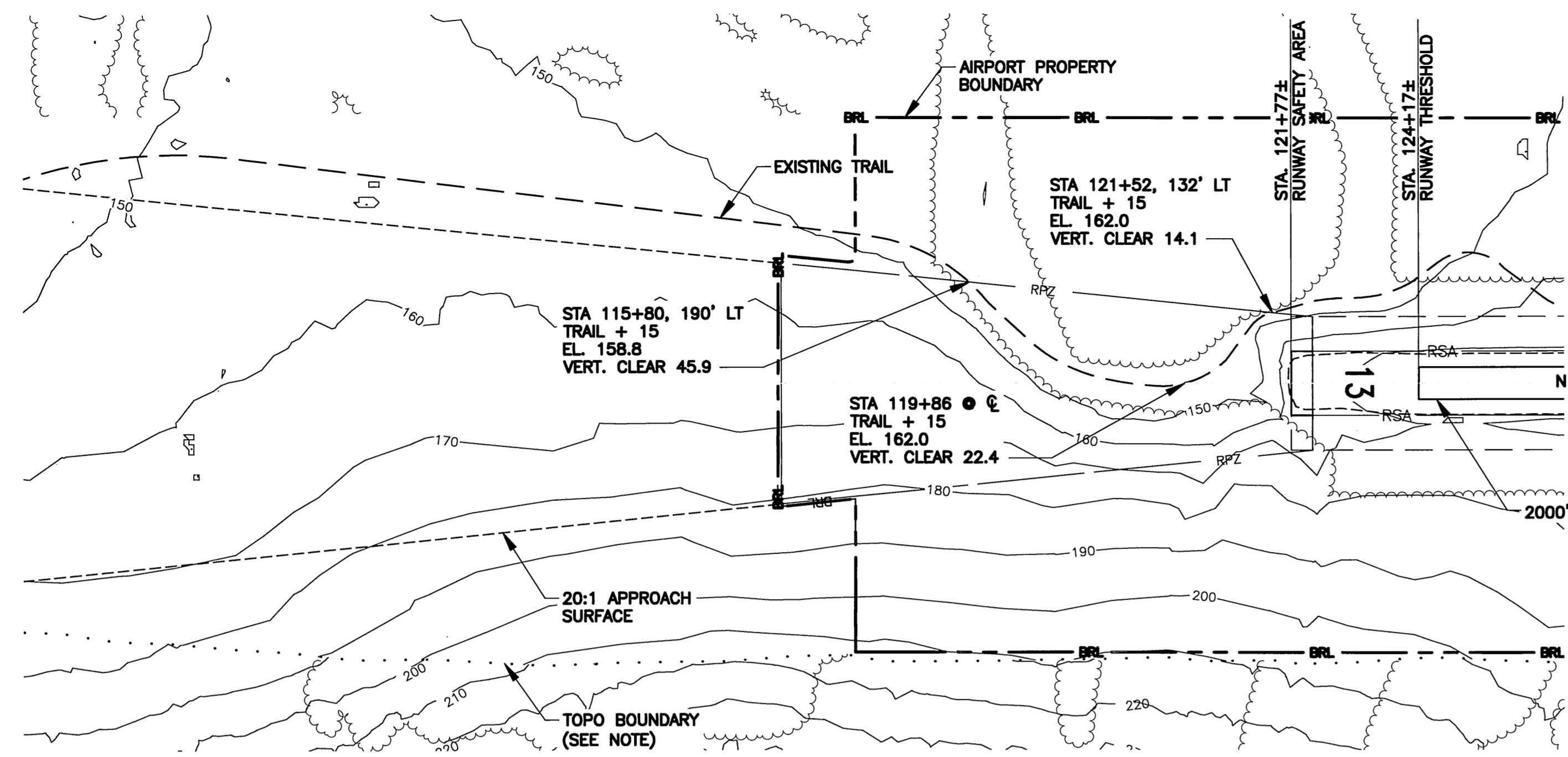
STATE OF ALASKA
DEPARTMENT OF TRANSPORTATION
AND PUBLIC FACILITIES
CENTRAL REGION

CROOKED CREEK AIRPORT
 CROOKED CREEK, ALASKA
 AIRPORT LAYOUT PLAN

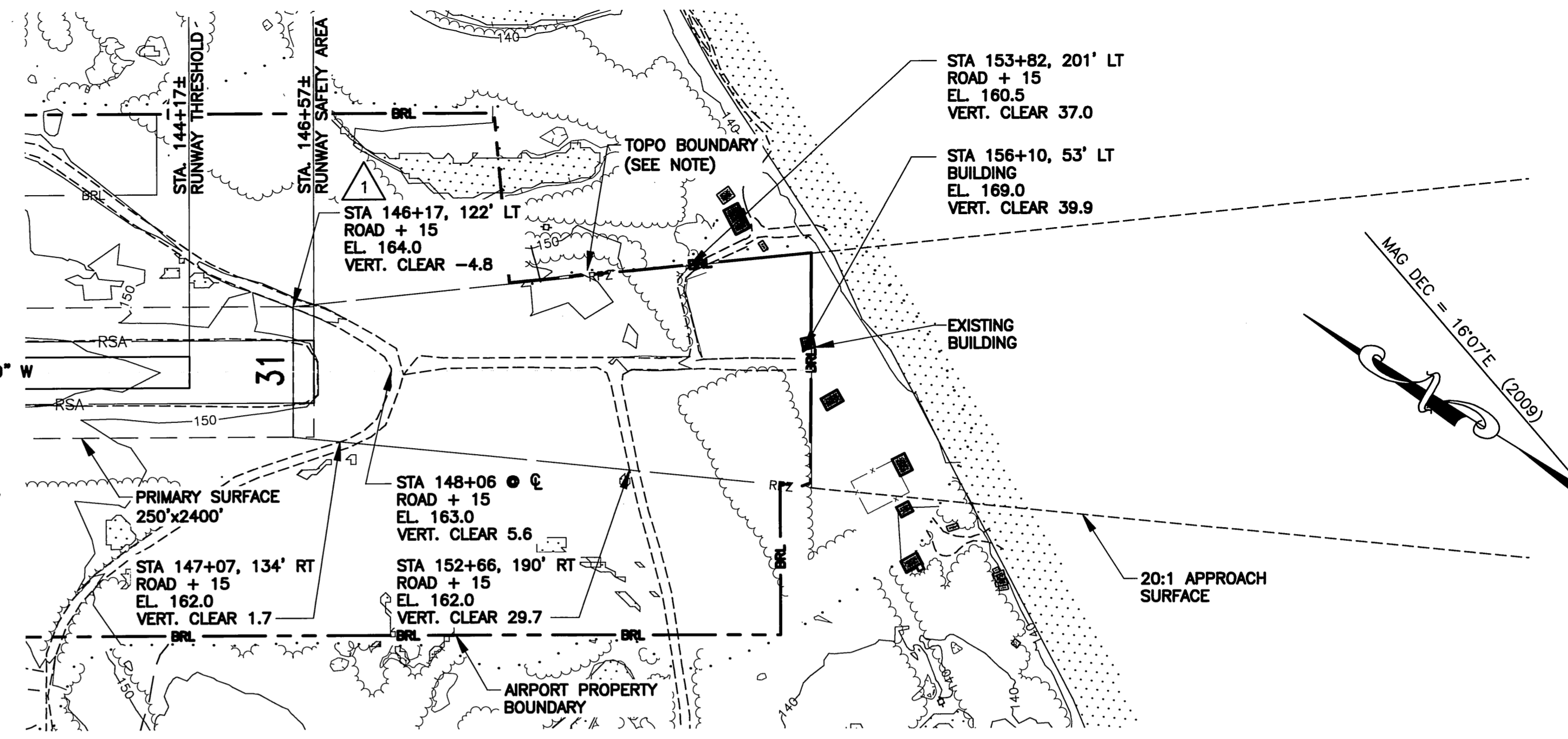
ULTIMATE LAYOUT

DATE: 12/09/2010.
SHEET: 4 OF 9

Date Plotted: 12/09/2010, 2:33 PM
 Layout Name: W:\Projects\Crooked Creek\ALP\ALP from RDC 12-07-10\03-001\F08088.dwg
 File Name: 5
 Designed By: MCY
 Drawn By: BWD
 Checked By: RLC

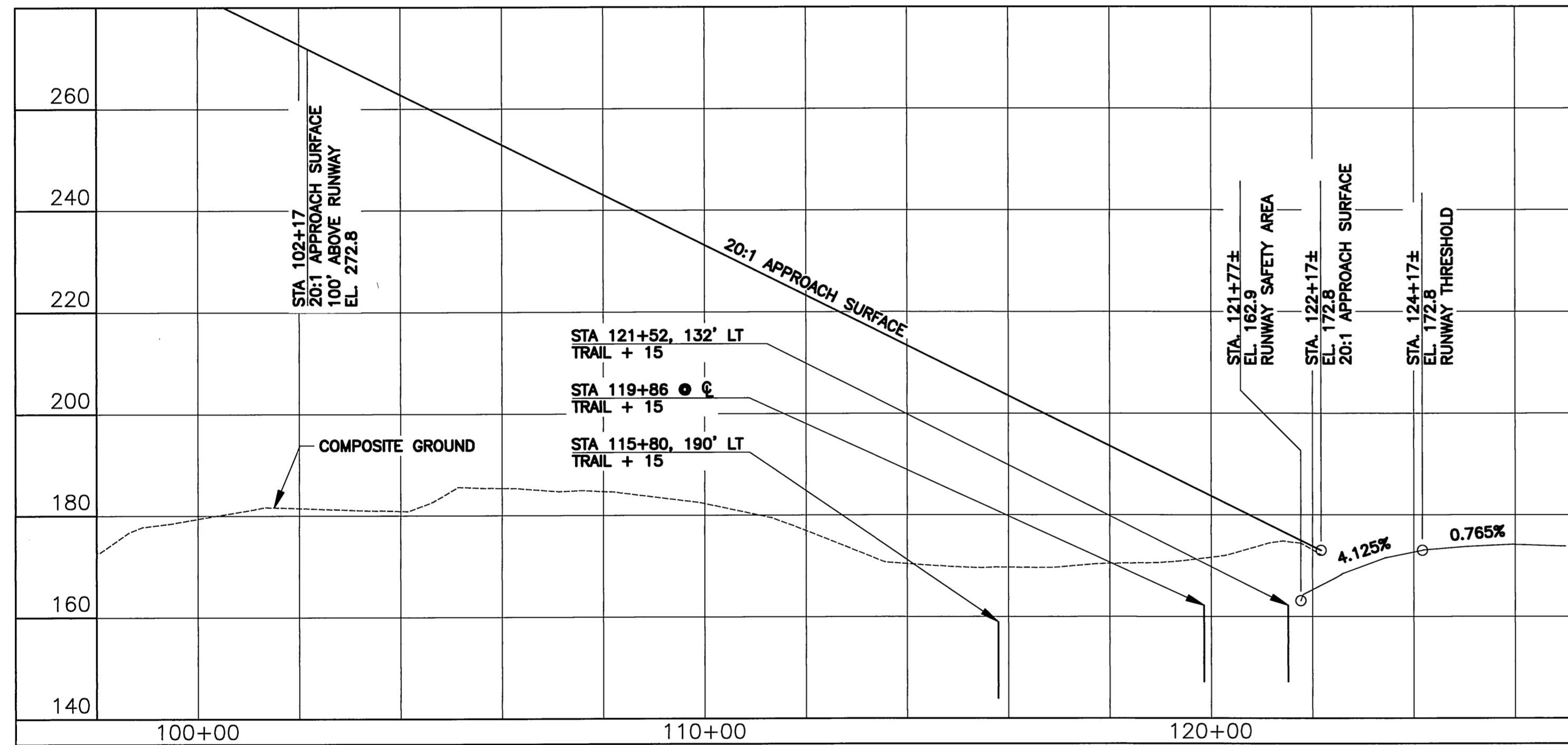


RUNWAY 13 PLAN

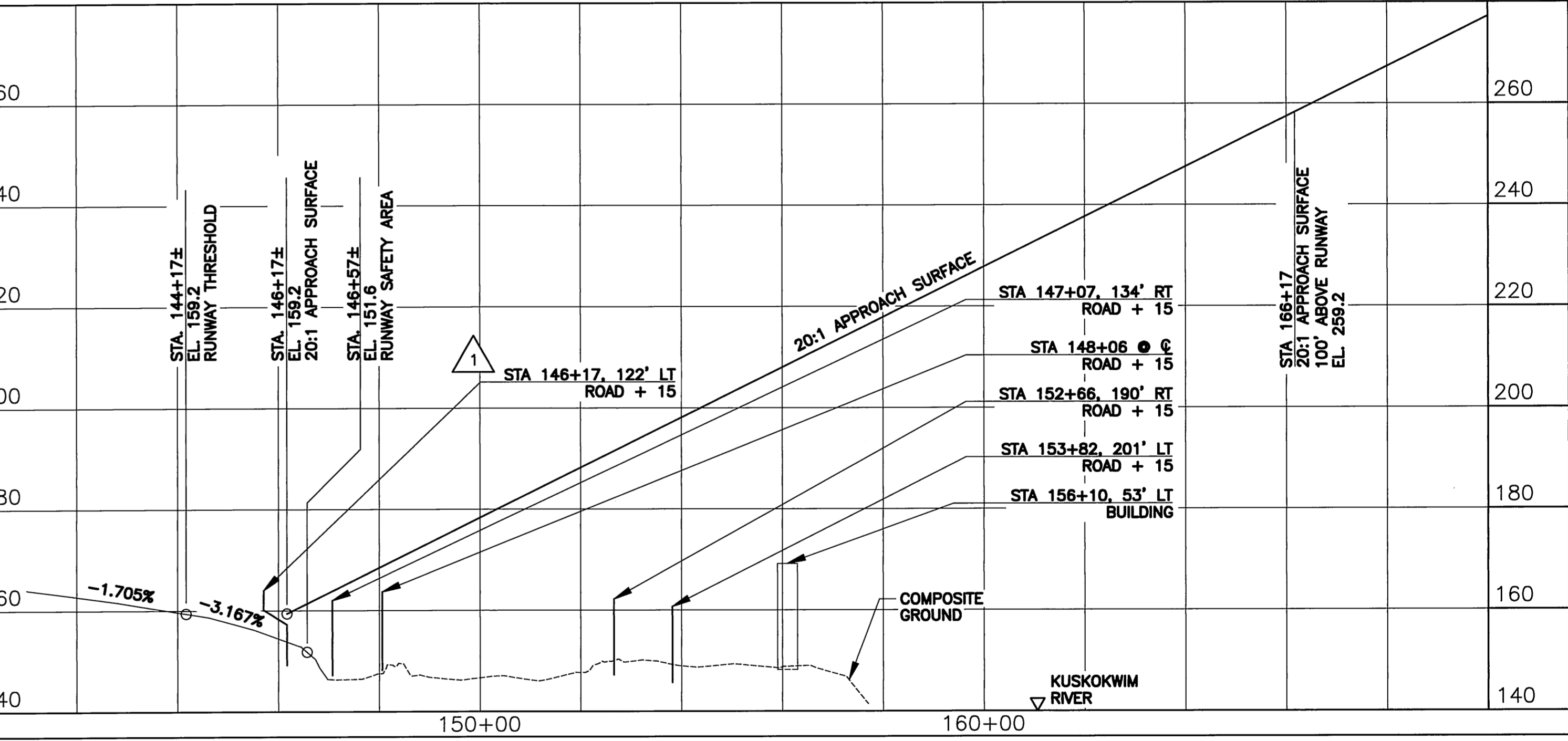


RUNWAY 31 PLAN

NOTE: MAPPING SHOWN ON THIS SHEET IS COMBINED TOPOGRAPHIC SURVEY AND CONTROLLED AERIAL MAPPING.



RUNWAY 13 PROFILE



RUNWAY 31 PROFILE

* HORIZONTAL TO VERTICAL RATIO=10:1

ID #	DESCRIPTION	STA/OFFSET	ELEVATION (MSL)	SURFACE PENETRATED	SURFACE ELEVATION	AMOUNT OF PENETRATION	DISPOSITION	STAGE TO CORRECT
	NONE							

ID #	DESCRIPTION	STA/OFFSET	ELEVATION (MSL)	SURFACE PENETRATED	SURFACE ELEVATION	AMOUNT OF PENETRATION	DISPOSITION	STAGE TO CORRECT
1	ROAD + 15	146+17/ 122.55 LT	164.0'	APPROACH	159.2'	4.8'	TO REMAIN	NEAR-TERM

- NOTES:**
- SEE SHEET 8 FOR F.A.R. PART 77 OBSTRUCTION TABLE (OUTER PORTION).
 - THERE ARE NO OBJECT PENETRATIONS IN THE RUNWAY APPROACH END SITING SURFACE OF RUNWAY 13, AS DEFINED IN FAA AC 150/5300-13, CHANGE 14, APPENDIX 2, TABLE A2-1, LINE 2.
 - THE CONTROLLING OBSTRUCTION FOR RUNWAY 13 ARE 30' TREES (ASSUMED) LOCATION ALONG THE WESTERN BOUNDARY OF THE APPROACH SURFACE. THE OBSTRUCTION CLEARANCE SLOPE IS ESTABLISHED AS 28:1 PER FAA AC 150/5200-35, SECTION 4, DATA ELEMENT NUMBER 57.

- NOTES:**
- SEE SHEET 8 FOR F.A.R. PART 77 OBSTRUCTION TABLE (OUTER PORTION).
 - SEE SURFACE OBSTRUCTION TABLE FOR SURFACE OBJECT PENETRATIONS TO THRESHOLD SITING SURFACE, AS DEFINED IN FAA AC 150/5300-13, CHANGE 14, APPENDIX 2, TABLE A2-1, LINE 2.
 - THE CONTROLLING OBSTRUCTION FOR RUNWAY 31 IS THE ROAD CROSSING AT STA 146+17, 122.55 LT, ELEVATION INCLUDING 15' VEHICLE IS 164.0'. THE OBSTRUCTION IS LOCATED AT THE BEGINNING OF THE APPROACH SURFACE, THEREFORE NO OBSTRUCTION CLEARANCE SLOPE CAN BE ESTABLISHED.

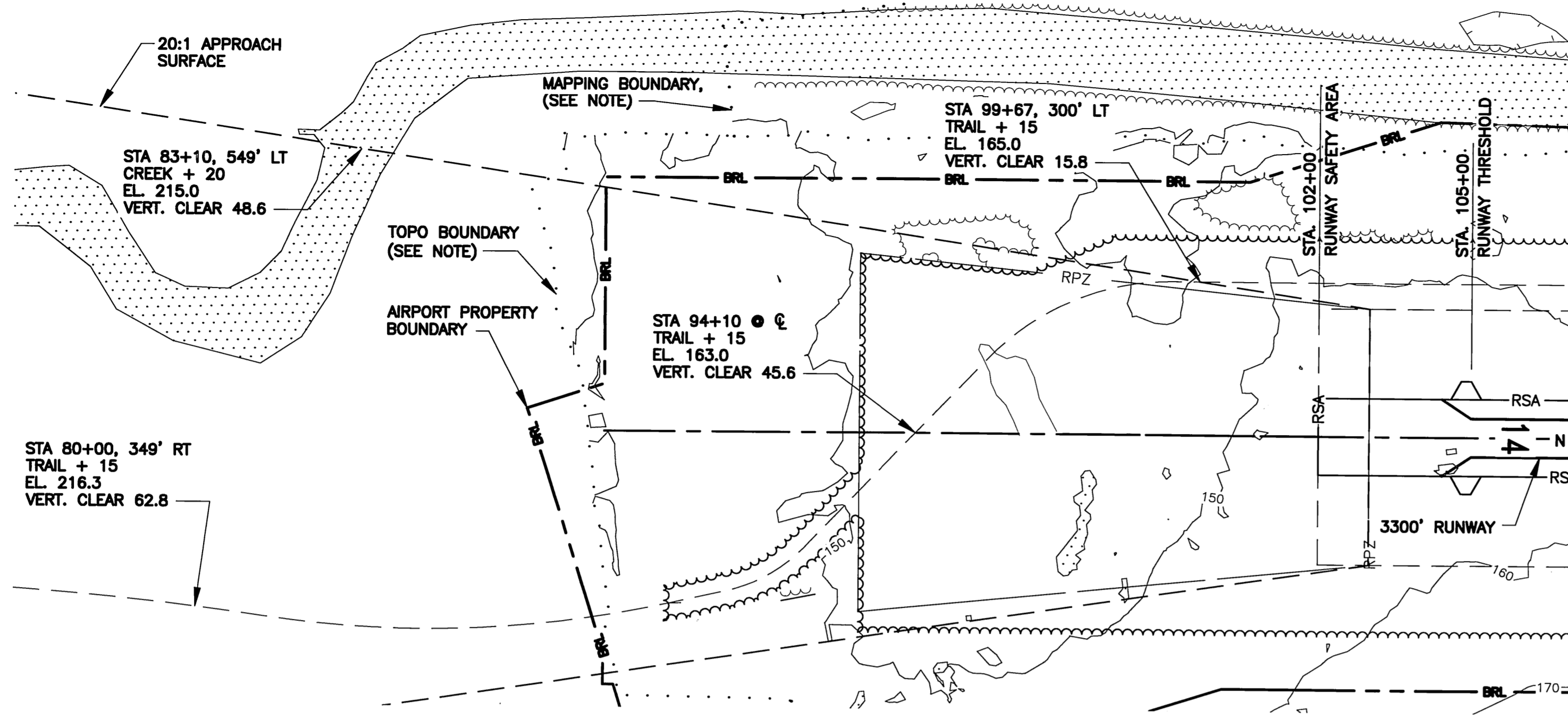
BY	DATE	REVISION

STATE OF ALASKA
DEPARTMENT OF TRANSPORTATION
AND PUBLIC FACILITIES
CENTRAL REGION

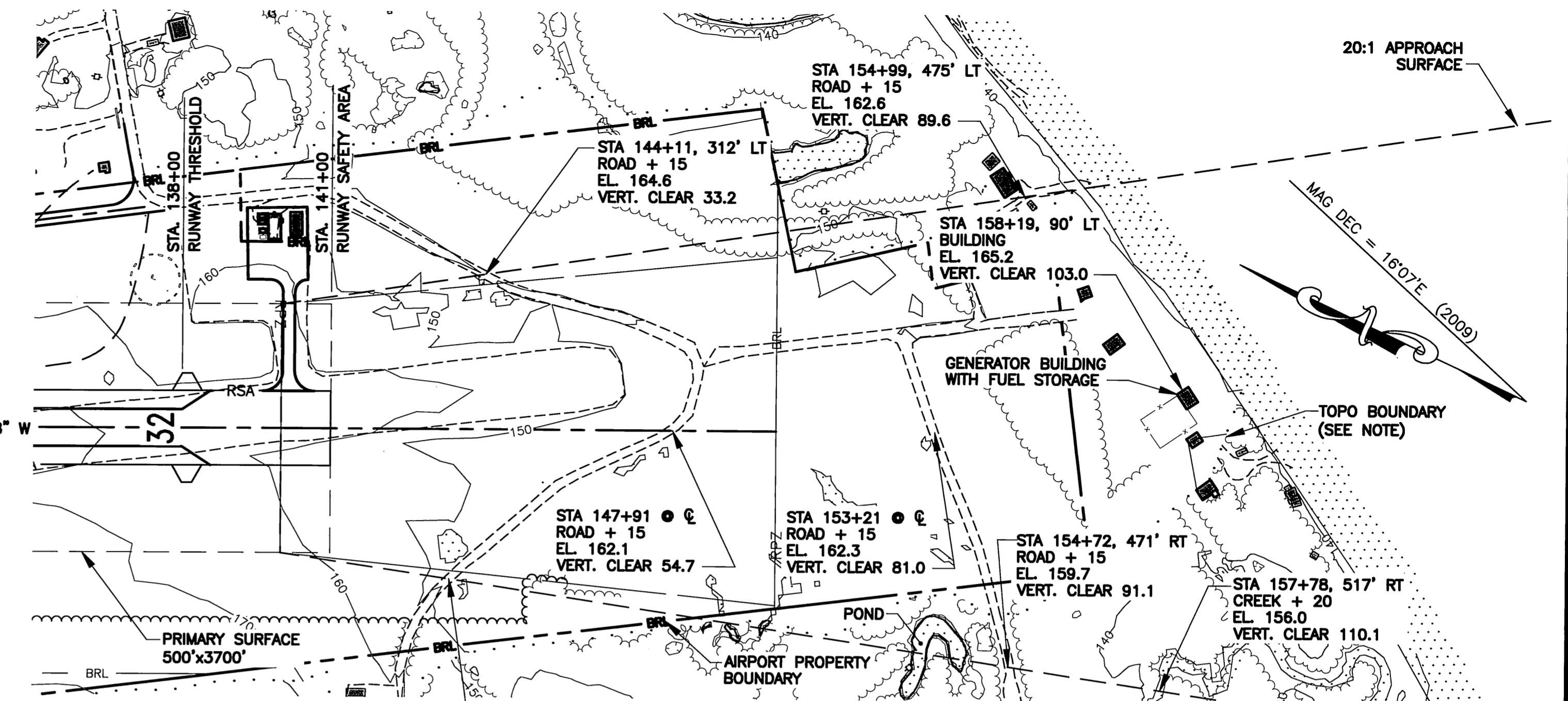
CROOKED CREEK AIRPORT
 CROOKED CREEK, ALASKA
 AIRPORT LAYOUT PLAN
 EXISTING INNER PORTION OF THE APPROACH SURFACE

DATE: 12/09/2010,
 SHEET: 5 OF 9

Date Plotted: 12/09/2010, 2:34 PM
 Layout Name: 6
 File Name: W:\Projects\Crooked Creek VLP\ALP from PDC\12-07-10\C0400\F06089.dwg
 Designed By: MCV
 Drawn By: BMD
 Checked By: IRLC

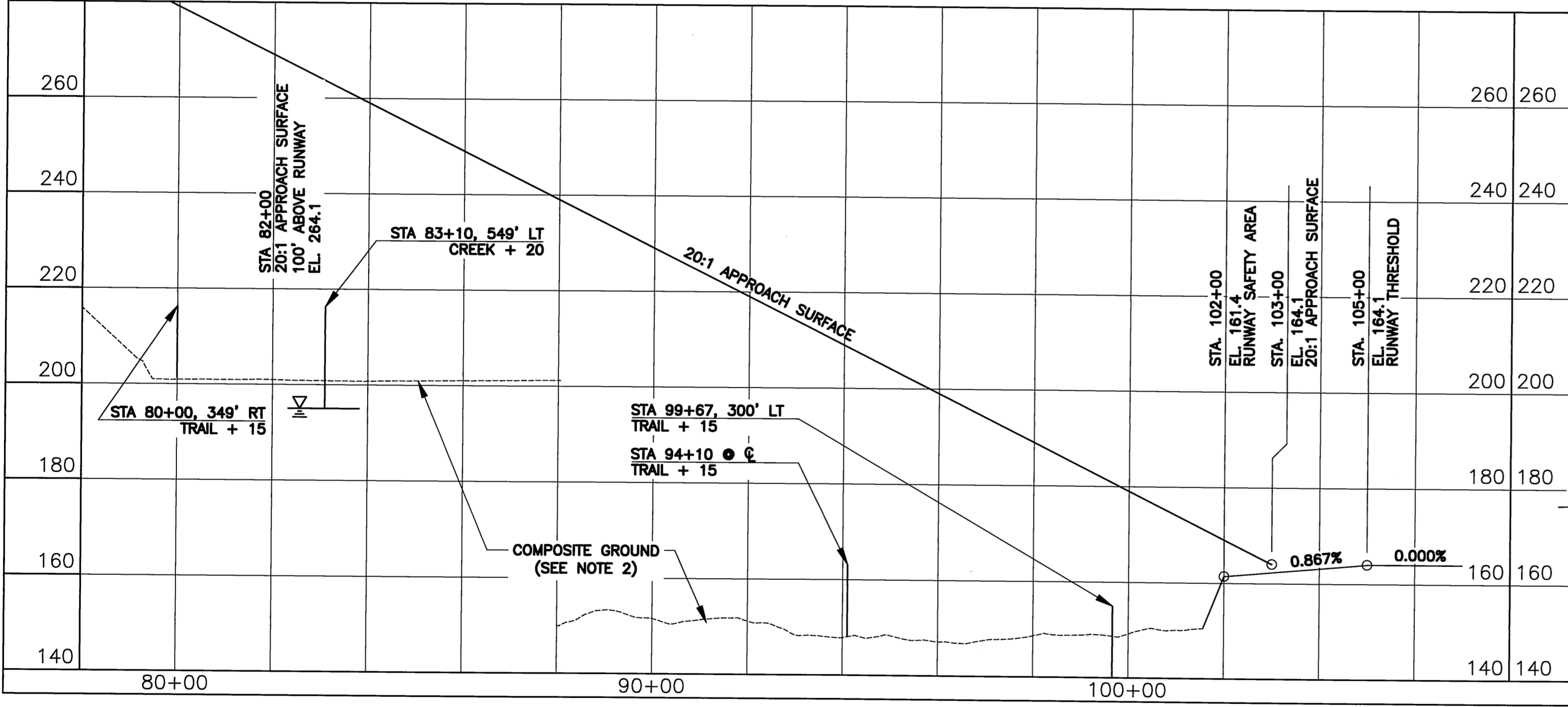


RUNWAY 14 PLAN

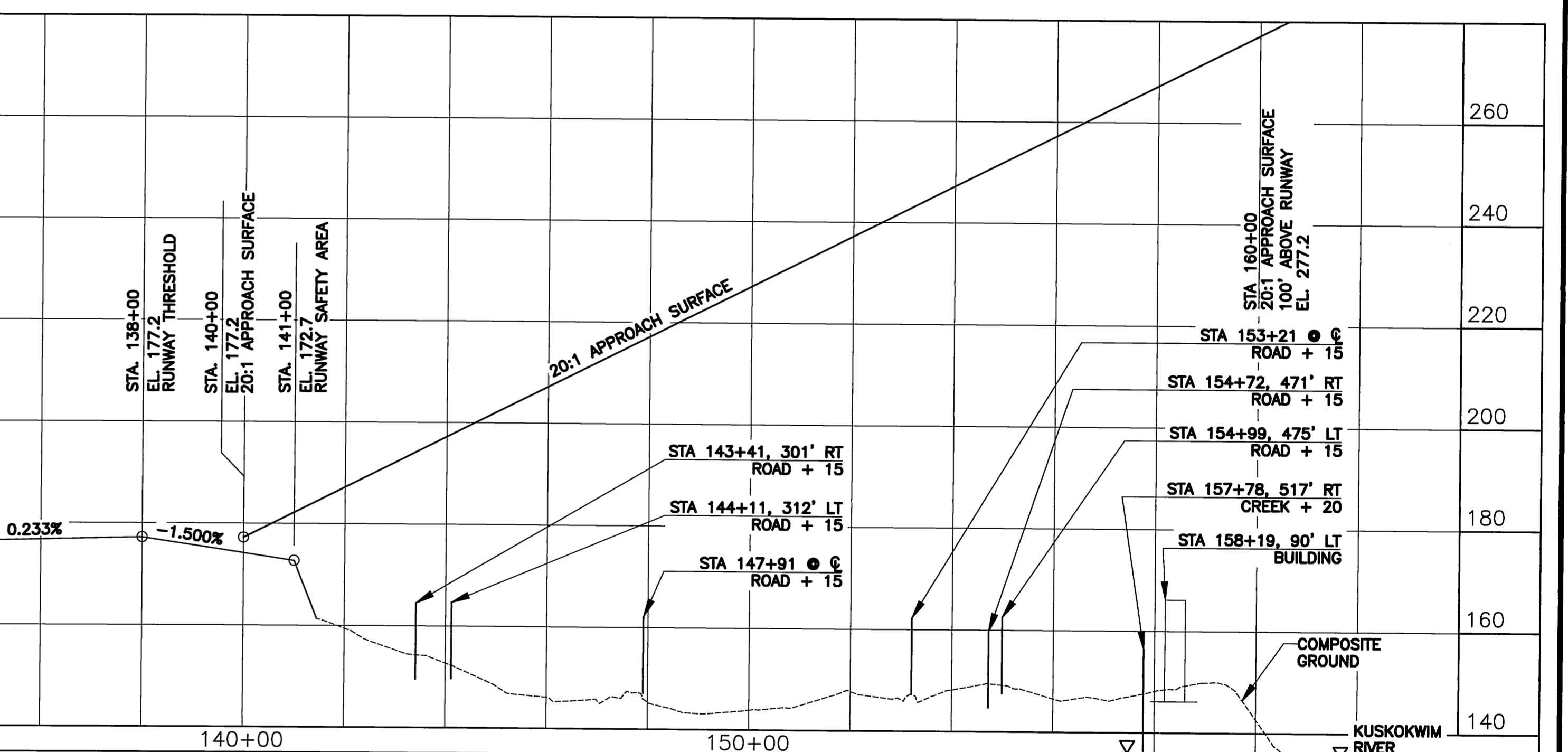


RUNWAY 32 PLAN

NOTE: MAPPING SHOWN ON THIS SHEET IS COMBINED TOPOGRAPHIC SURVEY AND CONTROLLED AERIAL MAPPING.



RUNWAY 14 PROFILE



RUNWAY 32 PROFILE

* HORIZONTAL TO VERTICAL RATIO=10:1

F.A.R. PART 77 SURFACE OBSTRUCTION TABLE (INNER PORTION RW 14)

ID #	DESCRIPTION	STA/OFFSET	ELEVATION (MSL)	SURFACE PENETRATED	SURFACE ELEVATION	AMOUNT OF PENETRATION	DISPOSITION	STAGE TO CORRECT
	NONE							

F.A.R. PART 77 SURFACE OBSTRUCTION TABLE (INNER PORTION RW 32)

ID #	DESCRIPTION	STA/OFFSET	ELEVATION (MSL)	SURFACE PENETRATED	SURFACE ELEVATION	AMOUNT OF PENETRATION	DISPOSITION	STAGE TO CORRECT
	NONE							

NOTES:

- SEE SHEET 8 FOR F.A.R. PART 77 OBSTRUCTION TABLE (OUTER PORTION).
- THE USGS QUAD MAPS ARE 30' TO 60' HIGHER IN ELEVATION THAN TOPO SURVEY/CONTROLLED MAPPING. TRAIL FOLLOWS VALLEY FLOOR, ELEVATION APPROXIMATED.
- THERE ARE NO OBJECT PENETRATIONS IN THE RUNWAY APPROACH END SITING SURFACE, AS DEFINED IN FAA AC 150/5300-13, CHANGE 14, APPENDIX 2, TABLE A2-1, LINE 3.
- THE CONTROLLING OBSTRUCTION FOR RUNWAY 14 ARE 30' TREES (ASSUMED) LOCATION ALONG THE WESTERN BOUNDARY OF THE APPROACH SURFACE. THE OBSTRUCTION CLEARANCE SLOPE IS ESTABLISHED AS 31:1 PER FAA AC 150/5200-35, SECTION 4, DATA ELEMENT NUMBER 57.

NOTES:

- SEE SHEET 8 FOR F.A.R. PART 77 OBSTRUCTION TABLE (OUTER PORTION).
- THERE ARE NO OBJECT PENETRATIONS IN THE RUNWAY APPROACH END SITING SURFACE, AS DEFINED IN FAA AC 150/5300-13, CHANGE 14, APPENDIX 2, TABLE A2-1, LINE 3.
- THERE ARE NO CONTROLLING OBSTRUCTIONS FOR RUNWAY 32, THEREFORE THE CONTROLLING OBSTRUCTION CLEARANCE SLOPE IS ESTABLISHED AS 50:1 PER FAA AC 150/5200-35, SECTION 4, DATA ELEMENT NUMBER 57.

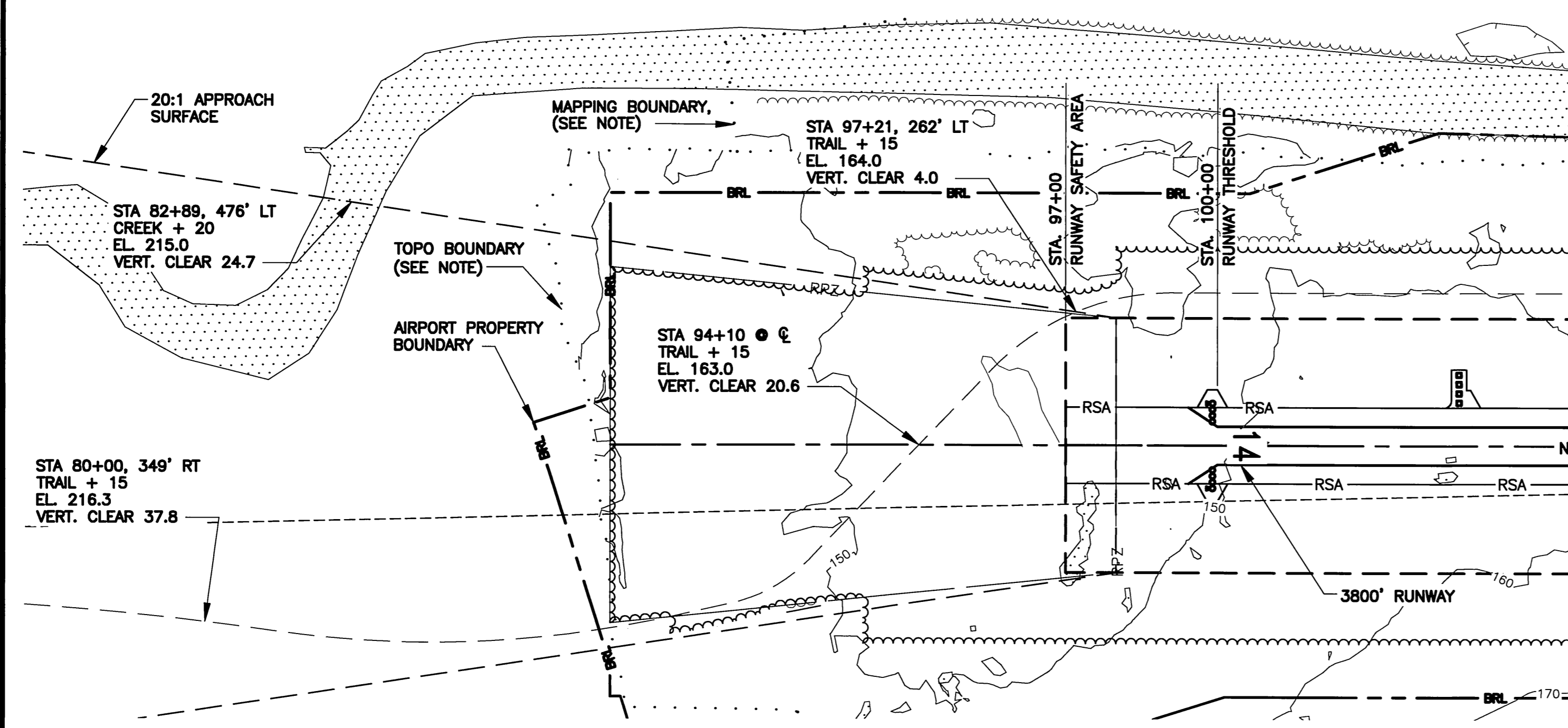
**STATE OF ALASKA
DEPARTMENT OF TRANSPORTATION
AND PUBLIC FACILITIES
CENTRAL REGION**

CROOKED CREEK AIRPORT
CROOKED CREEK, ALASKA
AIRPORT LAYOUT PLAN
NEAR-TERM INNER PORTION OF THE APPROACH SURFACE

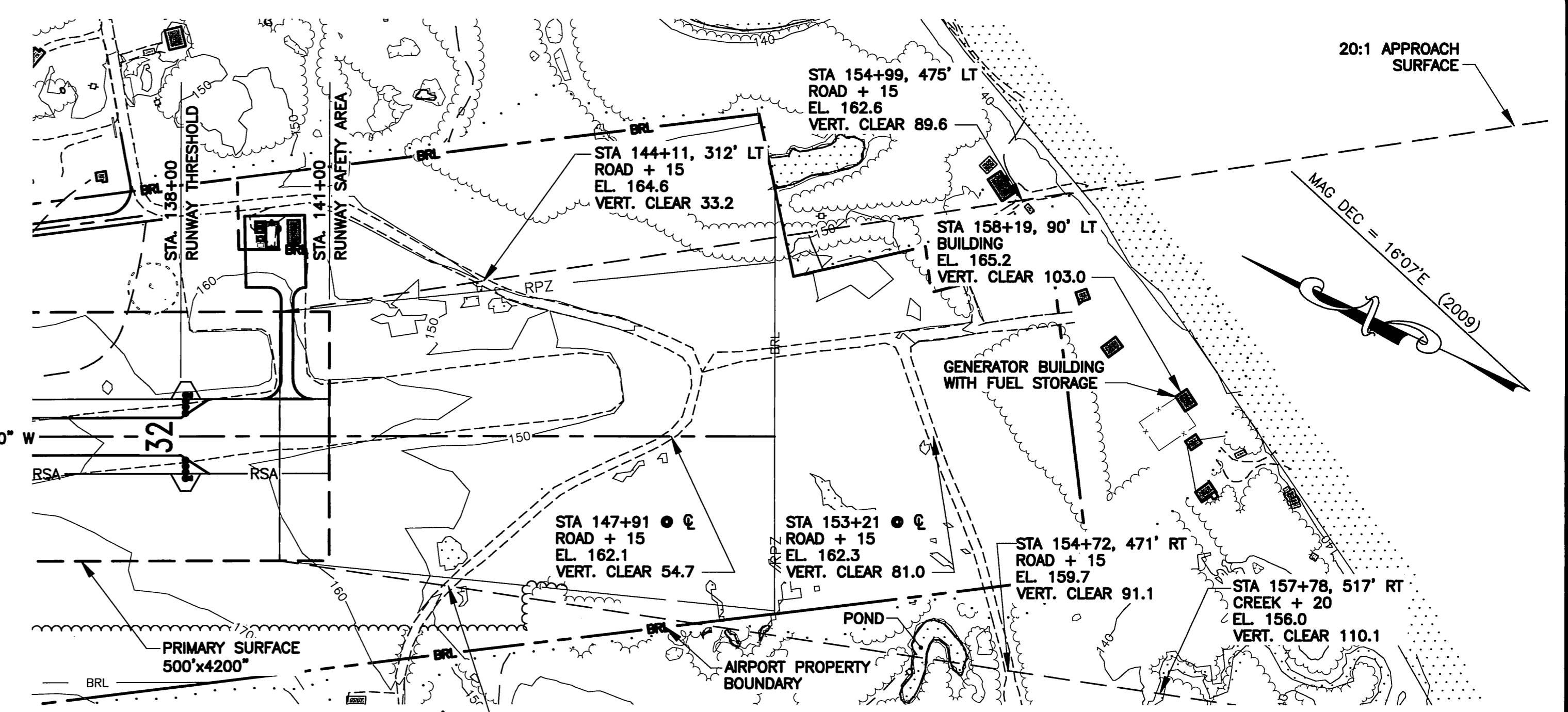
DATE: 12/09/2010
SHEET: 6 OF 9

BY	DATE	REVISION

Date Plotted: 12/09/2010, 2:35 PM
 Layout Name: 7
 File Name: \\projects\Crooked Creek\ALP\ALP from PDC 12-07-10\034003\F06098.dwg
 Designed By: MCY
 Drawn By: BMD
 Checked By: RLC

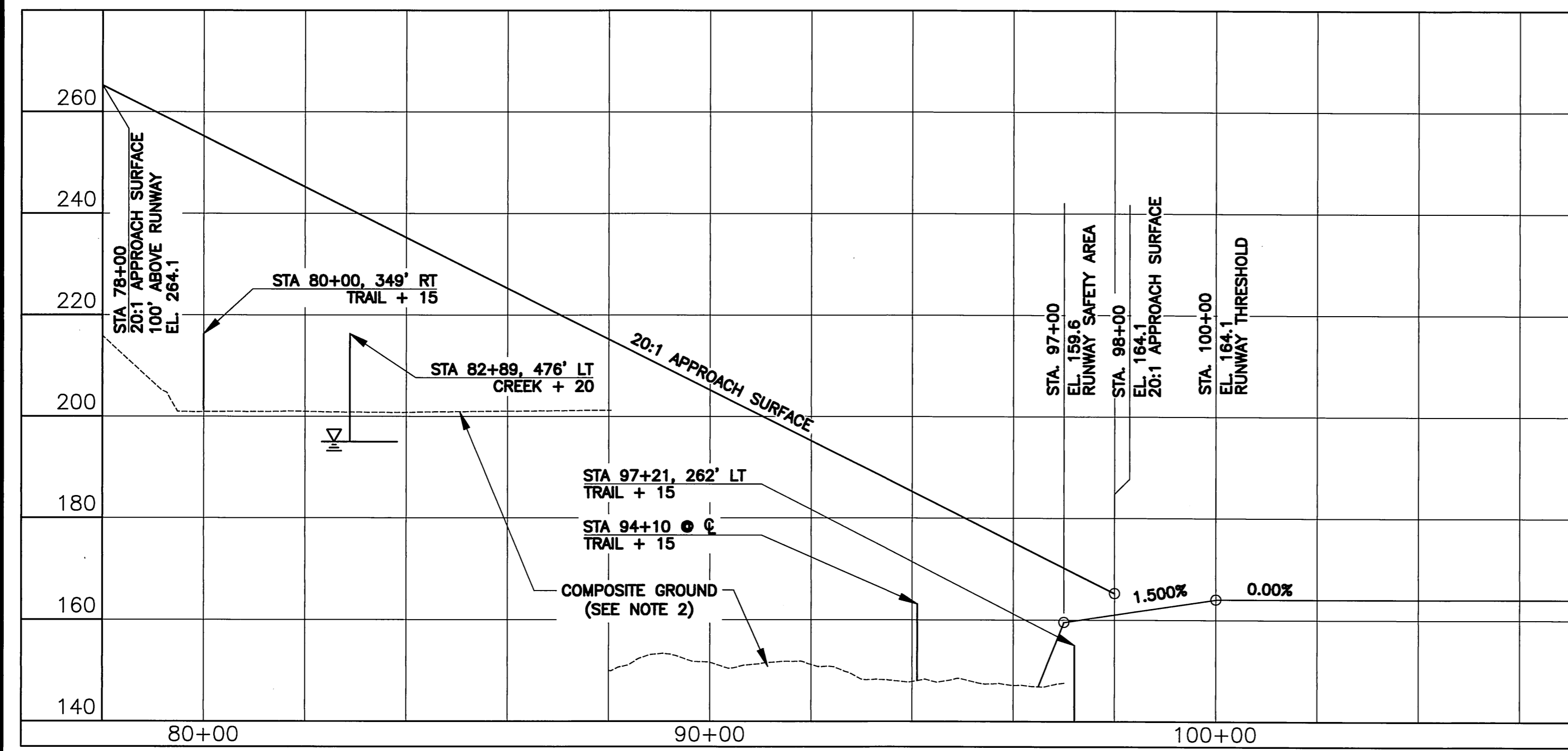


RUNWAY 14 PLAN

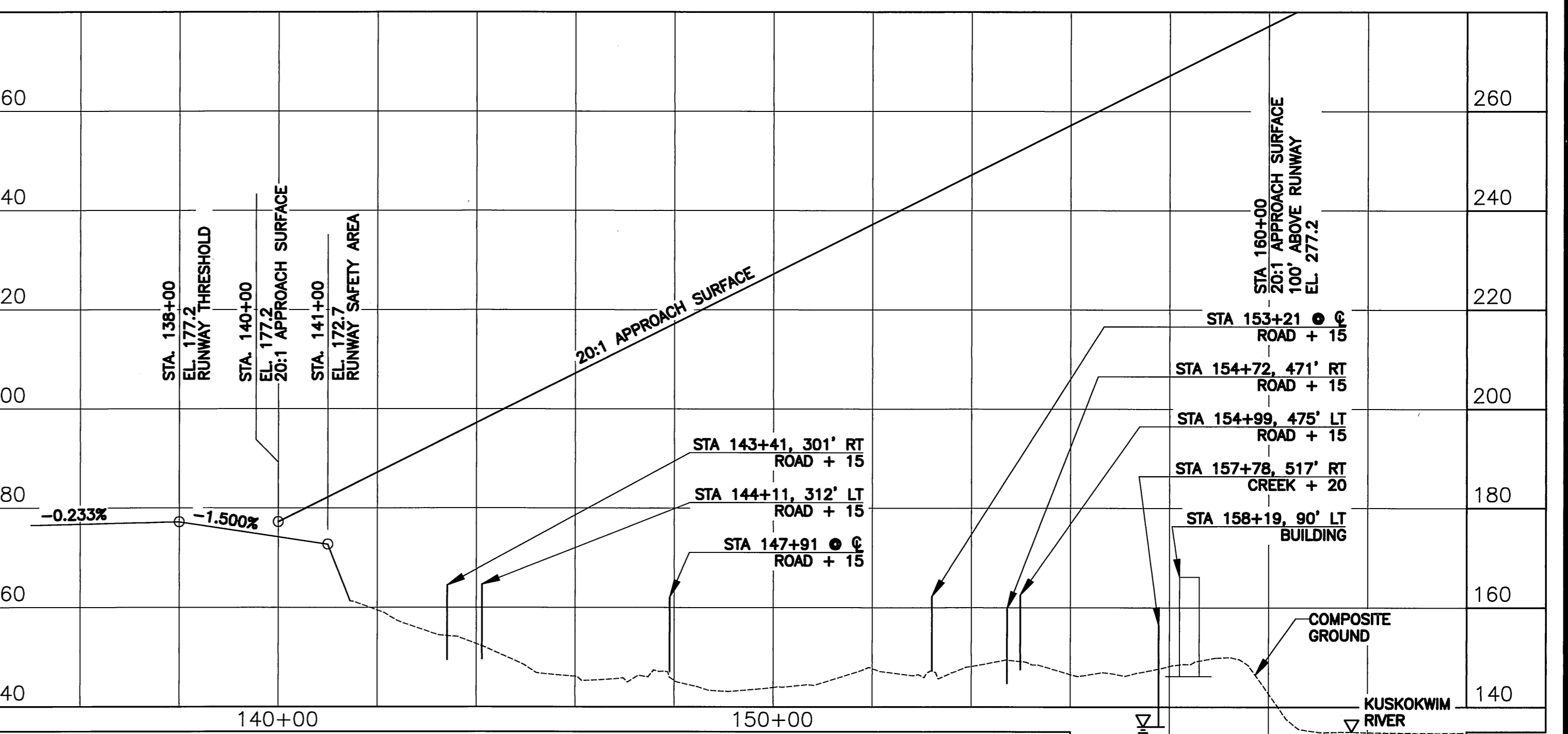


RUNWAY 32 PLAN

NOTE: MAPPING SHOWN ON THIS SHEET IS COMBINED TOPOGRAPHIC SURVEY AND CONTROLLED AERIAL MAPPING.



RUNWAY 14 PROFILE



RUNWAY 32 PROFILE

* HORIZONTAL TO VERTICAL RATIO=10:1

F.A.R. PART 77 SURFACE OBSTRUCTION TABLE (INNER PORTION RW 14)

ID #	DESCRIPTION	STA/OFFSET	ELEVATION (MSL)	SURFACE PENETRATED	SURFACE ELEVATION	AMOUNT OF PENETRATION	DISPOSITION	STAGE TO CORRECT
	NONE							

F.A.R. PART 77 SURFACE OBSTRUCTION TABLE (INNER PORTION RW 32)

ID #	DESCRIPTION	STA/OFFSET	ELEVATION (MSL)	SURFACE PENETRATED	SURFACE ELEVATION	AMOUNT OF PENETRATION	DISPOSITION	STAGE TO CORRECT
	NONE							

- NOTES:**
- SEE SHEET 8 FOR F.A.R. PART 77 OBSTRUCTION TABLE (OUTER PORTION).
 - THE USGS QUAD MAPS ARE 30' TO 60' HIGHER IN ELEVATION THAN TOPO SURVEY/CONTROLLED MAPPING. TRAIL FOLLOWS VALLEY FLOOR, ELEVATION APPROXIMATED.
 - THERE ARE NO OBJECT PENETRATIONS IN THE RUNWAY APPROACH END SITING SURFACE, AS DEFINED IN FAA AC 150/5300-13, CHANGE 14, APPENDIX 2, TABLE A2-1, LINE 3.
 - THE CONTROLLING OBSTRUCTION FOR RUNWAY 14 ARE 30' TREES (ASSUMED) LOCATION ALONG THE WESTERN BOUNDARY OF THE APPROACH SURFACE. THE OBSTRUCTION CLEARANCE SLOPE IS ESTABLISHED AS 28:1 PER FAA AC 150/5200-35, SECTION 4, DATA ELEMENT NUMBER 57.

- NOTES:**
- SEE SHEET 8 FOR F.A.R. PART 77 OBSTRUCTION TABLE (OUTER PORTION).
 - THERE ARE NO OBJECT PENETRATIONS IN THE RUNWAY APPROACH END SITING SURFACE, AS DEFINED IN FAA AC 150/5300-13, CHANGE 14, APPENDIX 2, TABLE A2-1, LINE 3.
 - THERE ARE NO CONTROLLING OBSTRUCTIONS FOR RUNWAY 32, THEREFORE THE CONTROLLING OBSTRUCTION CLEARANCE SLOPE IS ESTABLISHED AS 50:1 PER FAA AC 150/5200-35, SECTION 4, DATA ELEMENT NUMBER 57.

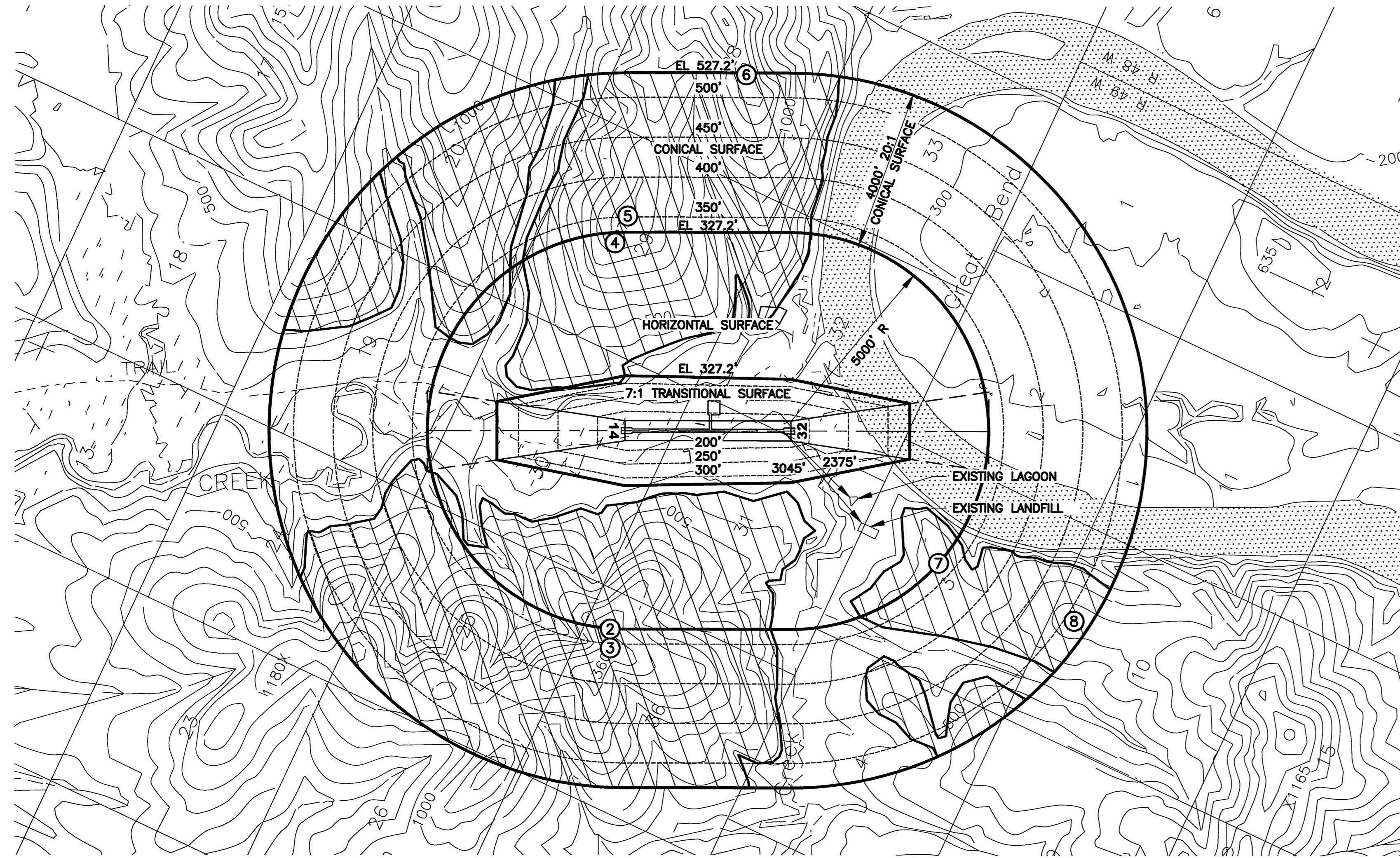
BY	DATE	REVISION

**STATE OF ALASKA
DEPARTMENT OF TRANSPORTATION
AND PUBLIC FACILITIES
CENTRAL REGION**

CROOKED CREEK AIRPORT
CROOKED CREEK, ALASKA
AIRPORT LAYOUT PLAN
ULTIMATE INNER PORTION OF THE APPROACH SURFACE

DATE: 12/09/2010
SHEET: 7 OF 9

Date Plotted: 12/09/2010, 2:36 PM
 Layout Name: 8
 File Name: W:\Projects\Crooked Creek\ALP\ALP from PDC 12-07-10\03500LPF06089.dwg
 Designed By: MCY
 Drawn By: BMD
 Checked By: RLC

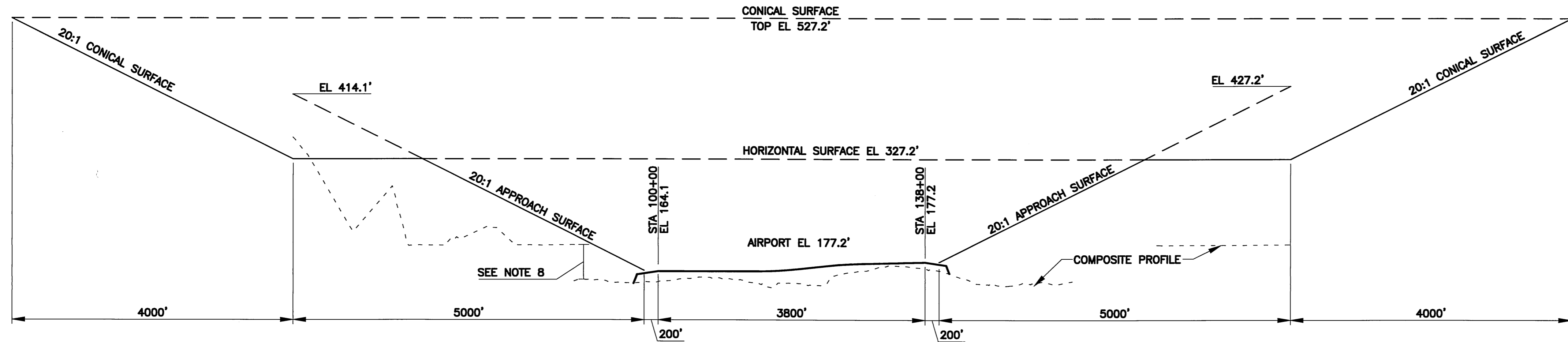


F.A.R. PART 77 SURFACE OBSTRUCTION TABLE (OUTER PORTION)								
ID #	DESCRIPTION	STA/OFFSET	ELEVATION	SURFACE PENETRATED	SURFACE ELEVATION	AMOUNT OF PENETRATION	DISPOSITION	STAGE TO CORRECT
*②	TERRAIN PENETRATION	94+33 4998 RT	1300	HORIZONTAL	328	972	TO REMAIN	N/A
*③	TERRAIN PENETRATION	94+33 5473 RT	1360	CONICAL	350	1010	TO REMAIN	N/A
*④	TERRAIN PENETRATION	95+40 4735 LT	1100	HORIZONTAL	328	772	TO REMAIN	N/A
*⑤	TERRAIN PENETRATION	98+61 5410 LT	1187	CONICAL	350	837	TO REMAIN	N/A
*⑥	TERRAIN PENETRATION	128+62 8956 LT	1500	CONICAL	528	972	TO REMAIN	N/A
*⑦	TERRAIN PENETRATION	177+37 3322 RT	450	HORIZONTAL	328	122	TO REMAIN	N/A
*⑧	TERRAIN PENETRATION	211+68 4770 RT	750	CONICAL	512	238	TO REMAIN	N/A

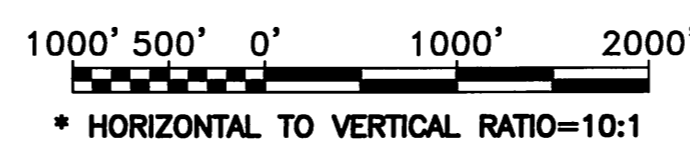
* HIGHEST FEATURE IN LARGE AREA OF TERRAIN PENETRATION. REFER TO HATCHED AREAS ON MAP.

NOTES:

- AIRPORT ELEVATION IS 177.2' (NAVD 88).
- APPROACH SURFACES ARE 20:1 BEGINNING 200' BEYOND THE THRESHOLD.
- BASE MAP DATA FROM USGS QUAD, SEWARD MERIDIAN, SLEETMUTE D-6, ALASKA.
- REFER TO THE INNER PORTION OF THE APPROACH SURFACE DRAWINGS FOR CLOSE-IN OBSTRUCTIONS.
- PRIMARY SURFACE WIDTH IS 500'.
- THERE ARE NO KNOWN ORDINANCE OR STATUTE HEIGHT RESTRICTIONS.
- RUNWAY THRESHOLD 14: EL 164.1
RUNWAY THRESHOLD 32: EL 177.2
- MAPPING SHOWN ON THIS SHEET IS THE USGS QUAD MAPS. THERE APPEARS TO BE A 30' TO 60' DISCREPANCY BETWEEN THE USGS QUAD MAP (BASED ON NAVD 29) AND THE PROJECT AERIAL MAPPING (NAVD 88). THE HORIZONTAL SURFACE PENETRATIONS WERE DETERMINED FROM BOTH THE CONTROLLED AERIAL MAPPING (2' CONTOUR INTERVAL) AND THE USGS QUAD MAPS (100' CONTOUR INTERVALS). THE REMAINDER OF THE PENETRATIONS WERE ESTABLISHED FROM JUST THE USGS QUAD MAPS.



RUNWAY PROFILE



STATE OF ALASKA
 DEPARTMENT OF TRANSPORTATION
 AND PUBLIC FACILITIES
 CENTRAL REGION

CROOKED CREEK AIRPORT
 CROOKED CREEK, ALASKA
 AIRPORT LAYOUT PLAN
 AIRPORT AIRSPACE, 14 CFR, PART 77

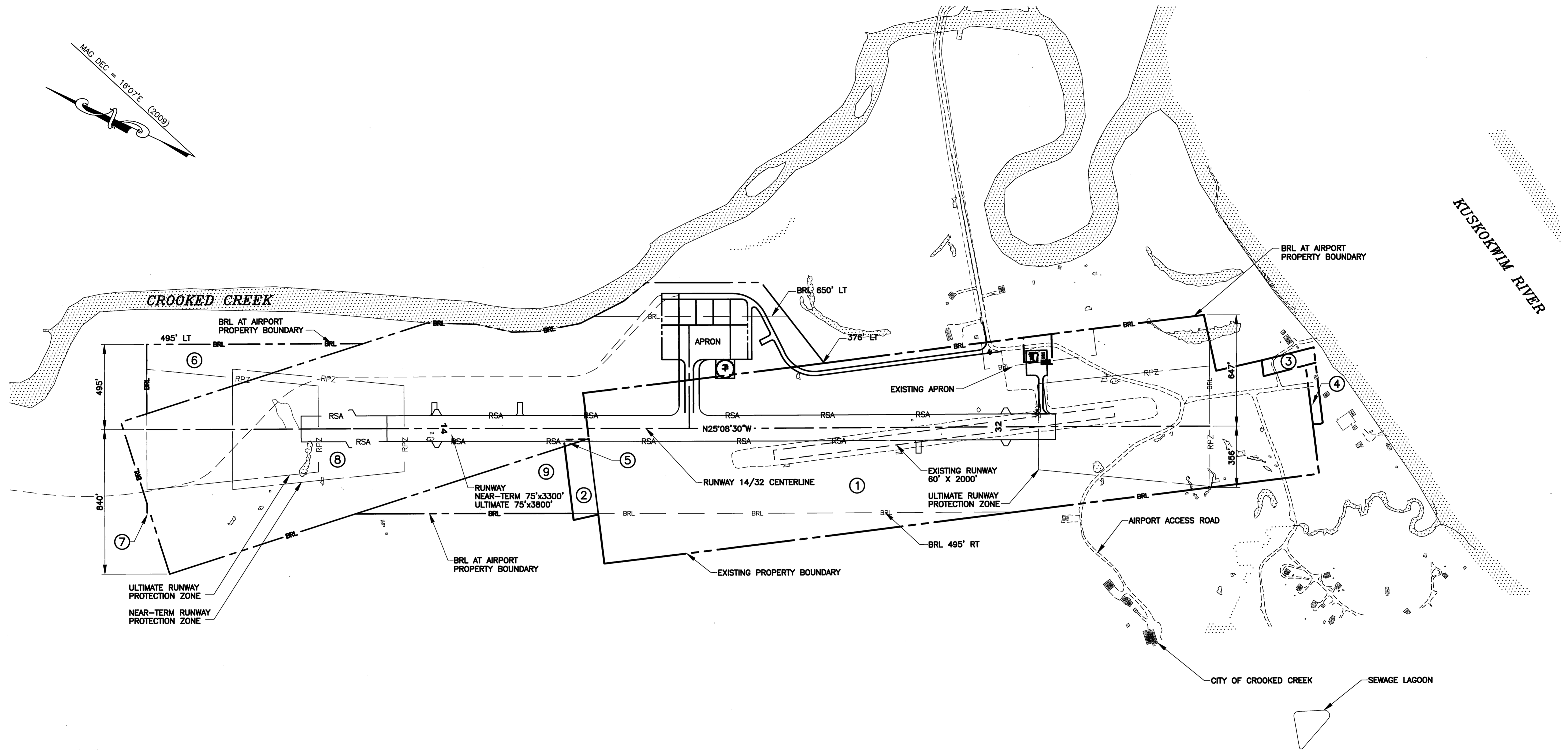
DATE: 12/09/2010.
 SHEET: 8 OF 9

BY	DATE	REVISION

MAG DEC = 1607'E (2009)

Designed By: MICY
 Drawn By: BMD
 Checked By: RLC

Date Plotted: 12/09/2010, 2:37 PM
 Layout Name: 9
 File Name: W:\Projects\Crooked Creek\ALP\ALP from PDC 12-07-10\03-08\BPLP06089.dwg



PROPERTY STATUS

ID #	INTEREST	GRANTOR	GRANTEE	PARCEL AREA	DATE ACQUIRED	RECORDED DOC. NO.	ACQUIRED AIP. NO.
1	FEE SIMPLE TO SURFACE & SUBSURFACE ESTATE	THE KUSKOKWIM CORP. (SURFACE) CALISTA CORP. (SUBSURFACE)	STATE OF ALASKA, DOT&PF	92.17± AC	10/16/90	BOOK 23, PAGE 160	3-02-0073-01
2	FEE SIMPLE TO SURFACE & SUBSURFACE ESTATE	THE KUSKOKWIM CORP. (SURFACE) CALISTA CORP. (SUBSURFACE)	STATE OF ALASKA, DOT&PF	1.47± AC	10/16/90	BOOK 23, PAGE 160	3-02-0073-01
3	AVIGATION & HAZARD EASEMENT	EVAN WASKEY BY THE BIA	STATE OF ALASKA, DOT&PF	0.73 AC	01/03/92	BOOK 23, PAGE 916	3-02-0073-01
4	AVIGATION & HAZARD EASEMENT	JOHNNY JOHN BY THE BIA	STATE OF ALASKA, DOT&PF	0.47 AC	01/03/92	BOOK 23, PAGE 910	3-02-0073-01
5	AVIGATION & HAZARD EASEMENT	JOHNNY JOHN BY THE BIA	STATE OF ALASKA, DOT&PF	1.06 AC	01/03/92	BOOK 23, PAGE 905	3-02-0073-01
6	FEE SIMPLE TO SURFACE & SUBSURFACE ESTATE	THE KUSKOKWIM CORPORATION/ CALISTA	STATE OF ALASKA, DOT&PF (PENDING)	5.84 AC	TO BE ACQUIRED	PENDING	PENDING
7	FEE SIMPLE TO SURFACE & SUBSURFACE ESTATE	THE KUSKOKWIM CORPORATION/ CALISTA	STATE OF ALASKA, DOT&PF (PENDING)	0.02 AC	TO BE ACQUIRED	PENDING	PENDING
8	FEE SIMPLE TO SURFACE & SUBSURFACE ESTATE	THE KUSKOKWIM CORPORATION/ CALISTA *	STATE OF ALASKA, DOT&PF (PENDING)	68.6 AC	TO BE ACQUIRED	PENDING	PENDING
9	FEE SIMPLE TO SURFACE & SUBSURFACE ESTATE	THE KUSKOKWIM CORPORATION/ CALISTA	STATE OF ALASKA, DOT&PF (PENDING)	5.69 AC	TO BE ACQUIRED	PENDING	PENDING

* A LAND EXCHANGE IS BEING EXECUTED TO TRANSFER NATIVE ALLOTMENT PROPERTY TO THE KUSKOKWIM CORPORATION.



BY	DATE	REVISION

**STATE OF ALASKA
 DEPARTMENT OF TRANSPORTATION
 AND PUBLIC FACILITIES
 CENTRAL REGION**

CROOKED CREEK AIRPORT
 CROOKED CREEK, ALASKA
 AIRPORT LAYOUT PLAN
 AIRPORT PROPERTY MAP

DATE: 12/09/2010
 SHEET: 9 OF 9