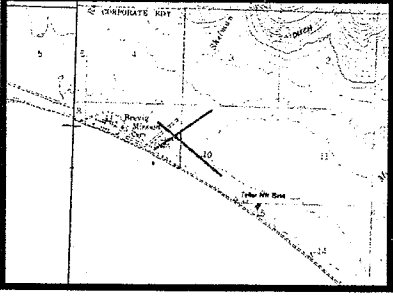


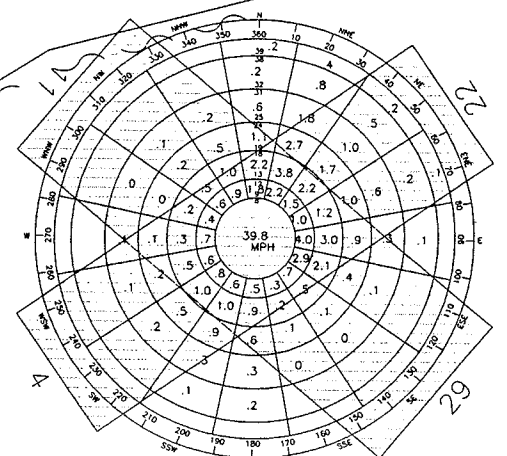
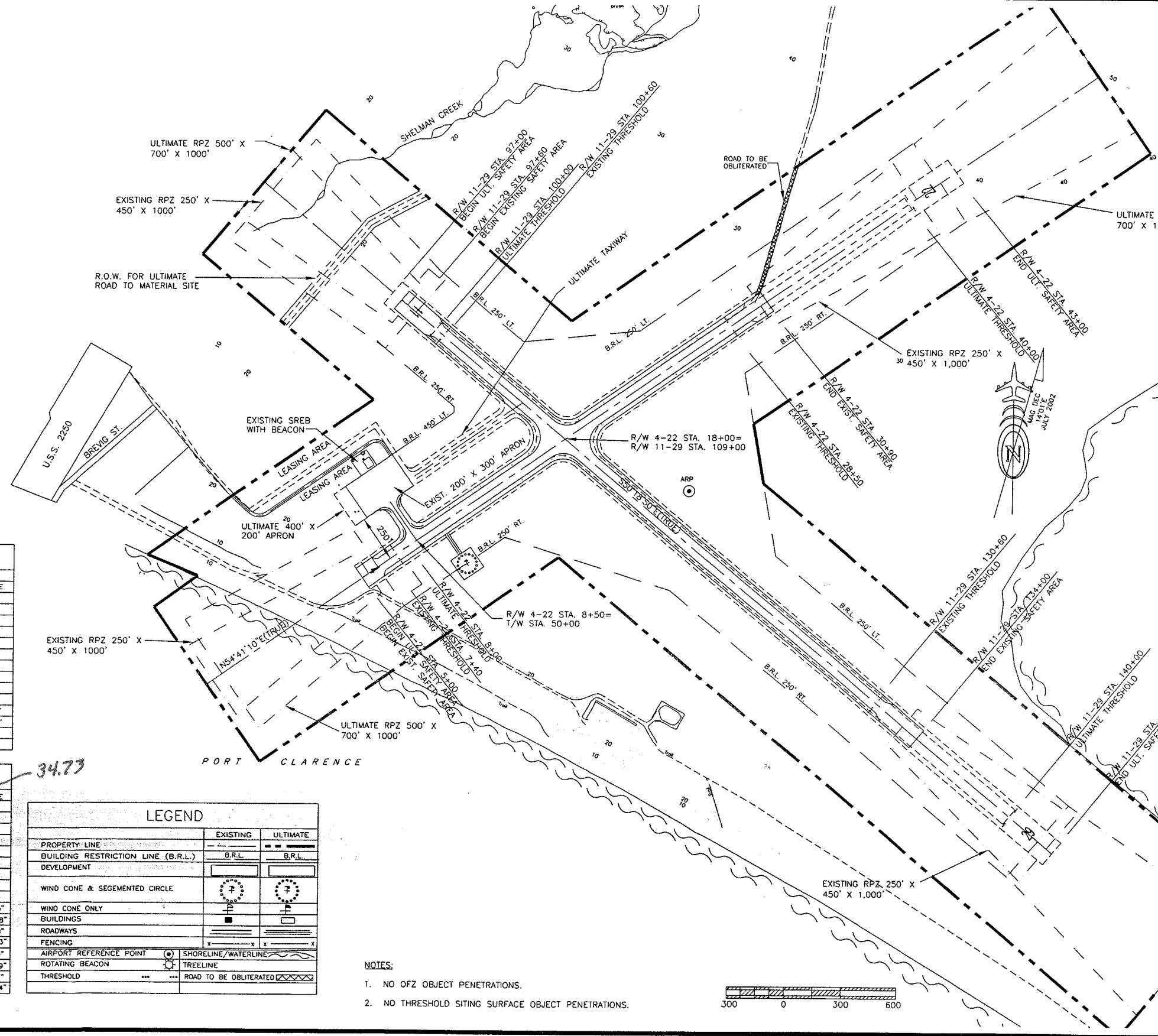
LOCATION MAP

NO SCALE



VICINITY MAP

SCALE: 1"=1 MILE
T2S R38W
USGS TELLER (B-3)
KATEEL RIVER MERIDIAN 1950



WIND ROSE

RUNWAY 4-22: 15 mph
RUNWAY 11-29: 18 mph

WIND DATA

PERCENT WIND COVERAGE
RUNWAY 4-22: 90.56%
RUNWAY 11-29: 84.74%
COMBINED COVERAGE: 95.84%
WIND DATA PERIOD:
8/9/90 through 1/13/92
ENRI U OF A, ANCHORAGE, ALASKA CLIMATE CENTER

	RUNWAY 4-22		RUNWAY 11-29	
	EXISTING	ULTIMATE	EXISTING	ULTIMATE
% WIND COVERAGE	90.56%	SAME	84.7%	SAME
INSTRUMENT RUNWAY	NONE	SAME	NONE	SAME
RUNWAY SURFACE TYPE	GRAVEL	SAME	GRAVEL	SAME
PAVEMENT STRENGTH	N/A	SAME	N/A	SAME
APPROACH SURFACES	20:1	SAME	20:1	SAME
APPROACH VISIBILITY MINIMUM	≥1 MILE	SAME	≥1 MILE	SAME
RUNWAY LIGHTING	MIRL	SAME	MIRL	SAME
RUNWAY MARKING	NONE	SAME	NONE	SAME
NAVIGATION AIDS	NONE	SAME	NONE	SAME
R/W DIMENSIONS	2110'x75'	3200'x75'	3000'x100'	4000'x100'
R/W SAFETY AREA	2590'x120'	3800'x150'	3600'x150'	4600'x150'
R/W OBJECT FREE AREA (ROFA)	2590'x250'	3800'x500'	3480'x250'	4600'x500'
T/W DIMENSIONS	190'x35'	200'x35'	NONE	630'x35'
T/W SAFETY AREA	190'x79'	200'x118'	NONE	630'x80'

AIRPORT DATA		EXISTING	ULTIMATE
AIRPORT ELEVATION (MSL)		35.17'	37'
AIRPORT REFERENCE CODE		8B	SAME
MEAN DAILY MAX. TEMP. HOTTEST MONTH (JULY)		57F	SAME
TAXIWAY LIGHTING		MIRL	SAME
RAMP LIGHTING		FLOODLIGHTS	SAME
NAVIGATION AIDS		ROT. BEACON	SAME
COMMUNICATION AIDS		NONE	SAME
AIRPORT REFERENCE POINT (ARP)	LAT.	N65°19'52.9"	SAME
R/W 11-29 STA. 115+80.13, 257.58' LT.	LONG.	W166°27'47.4"	SAME
THRESHOLD 4 EX STA. 7+40	LAT.	N65°19'49.2"	N65°19'49.5"
ULT STA. 8+00	LONG.	W166°28'24.0"	W166°28'22.8"
THRESHOLD 22 EX STA. 28+50	LAT.	N65°20'01.2"	N65°20'07.8"
ULT STA. 40+00	LONG.	W166°27'43.4"	W166°27'21.3"
THRESHOLD 11 EX STA. 100+60	LAT.	N65°20'00.5"	N65°20'00.9"
ULT STA. 100+00	LONG.	W166°28'18.8"	W166°28'19.9"
THRESHOLD 29 EX STA. 130+00	LAT.	N65°19'41.7"	N65°19'35.7"
ULT STA. 140+00	LONG.	W166°27'24.4"	W166°27'07.4"

DATA BASE CONTROL YEAR: NAD 83
BASED ON GEODETIC COORDINATES FOR STATION
TELLER (1943) AND TELLER SE BASE.

34.73

LEGEND		EXISTING	ULTIMATE
PROPERTY LINE		---	---
BUILDING RESTRICTION LINE (B.R.L.)		B.R.L.	B.R.L.
DEVELOPMENT		[Symbol]	[Symbol]
WIND CONE & SEGMENTED CIRCLE		[Symbol]	[Symbol]
WIND CONE ONLY		[Symbol]	[Symbol]
BUILDINGS		[Symbol]	[Symbol]
ROADWAYS		[Symbol]	[Symbol]
FENCING		[Symbol]	[Symbol]
AIRPORT REFERENCE POINT	SHORELINE/WATERLINE	[Symbol]	[Symbol]
ROTATING BEACON	TREELINE	[Symbol]	[Symbol]
THRESHOLD	ROAD TO BE OBLITERATED	[Symbol]	[Symbol]

- NOTES:
- NO OFZ OBJECT PENETRATIONS.
 - NO THRESHOLD SITING SURFACE OBJECT PENETRATIONS.



BY	DATE	REVISIONS
RP	8/15/02	AS-BUILT
FAA	9/6/96	FAA APPROVED
BY	8/18/03	FAA APPROVED

STATE OF ALASKA
DEPARTMENT OF TRANSPORTATION AND PUBLIC FACILITIES
NORTHERN REGION-DESIGN AND CONSTRUCTION-AVIATION

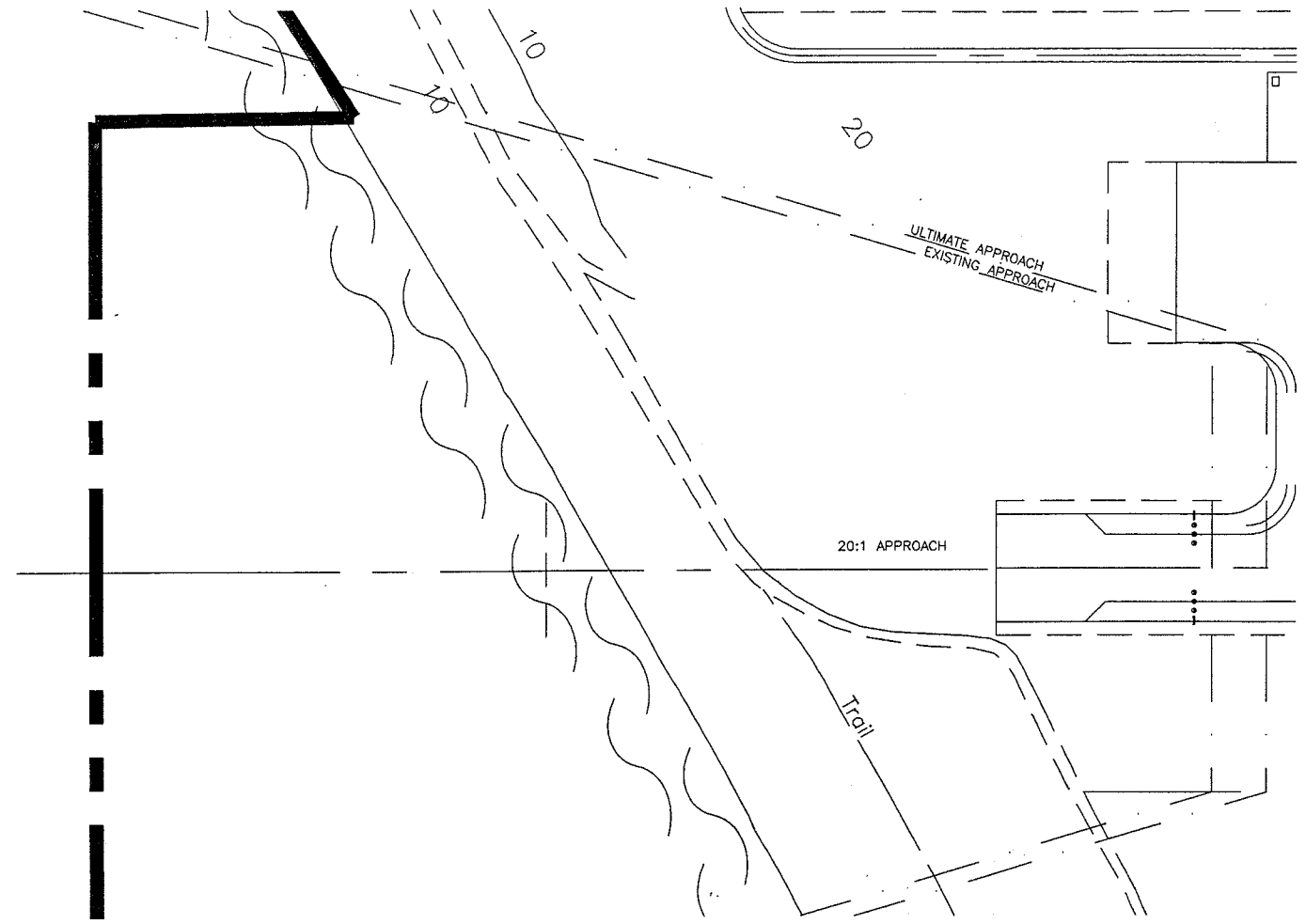
APPROVED
s/ *Patricia D. Miller* DATE 4/3/03
PATRICIA D. MILLER, P.E. AIRPORT DESIGN GROUP CHIEF

LAYOUT PLAN Approved:
By *John T. Lovett*
AIRPORTS DIVISION, ALASKAN REGION
Date 8/18/03
AIRSPACE: 95AAL-016NRA

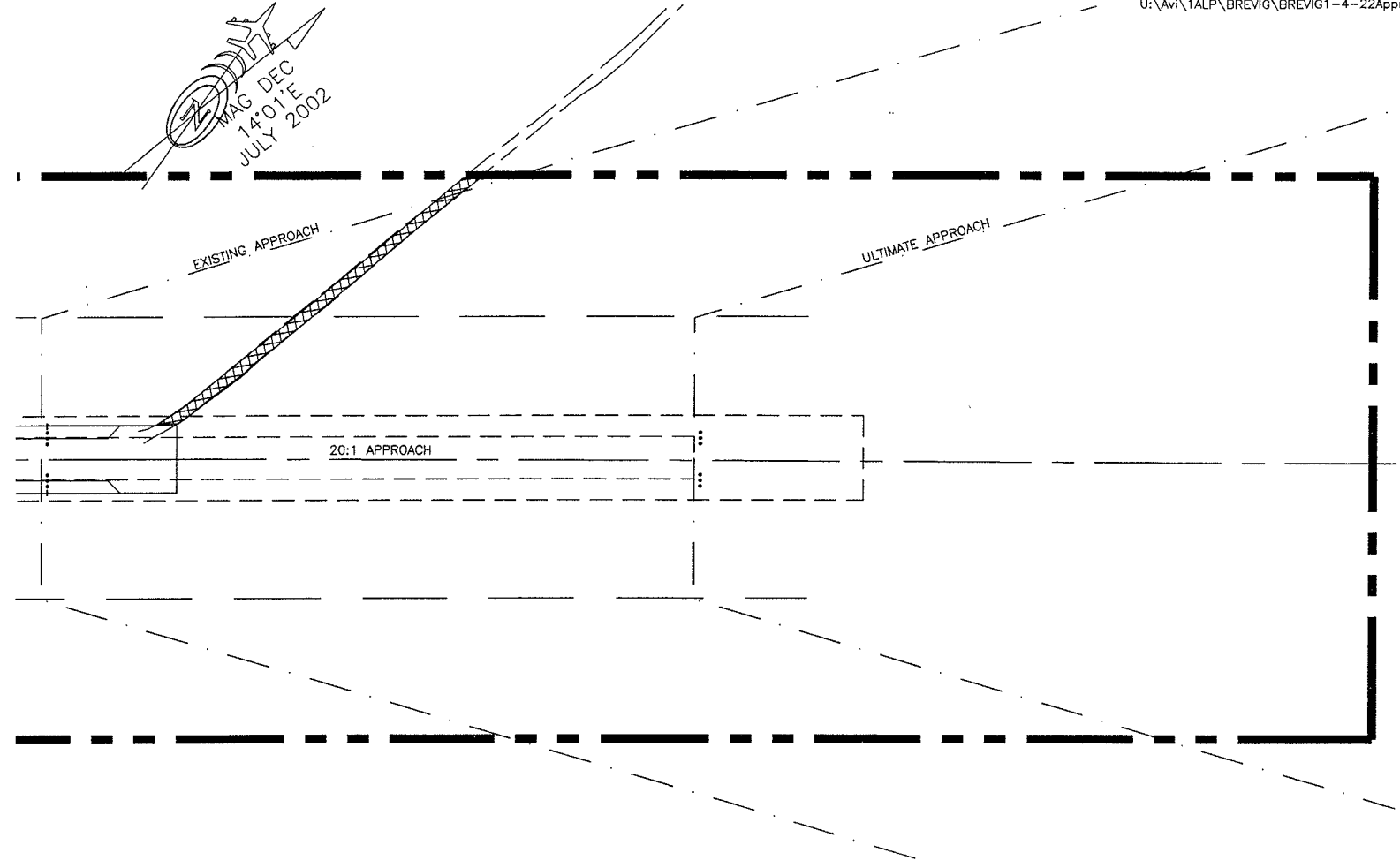
THIS ALP WAS PREPARED FROM THE PREVIOUS ALP, FROM THE CURRENT PROPERTY PLAN, FROM AEROMAPPING FILES, AND FROM ENGINEERING NOTES.
THIS ALP SUPERSEDES ALP DATED 6/19/96.

BREVIG MISSION AIRPORT
AIRPORT LAYOUT PLAN

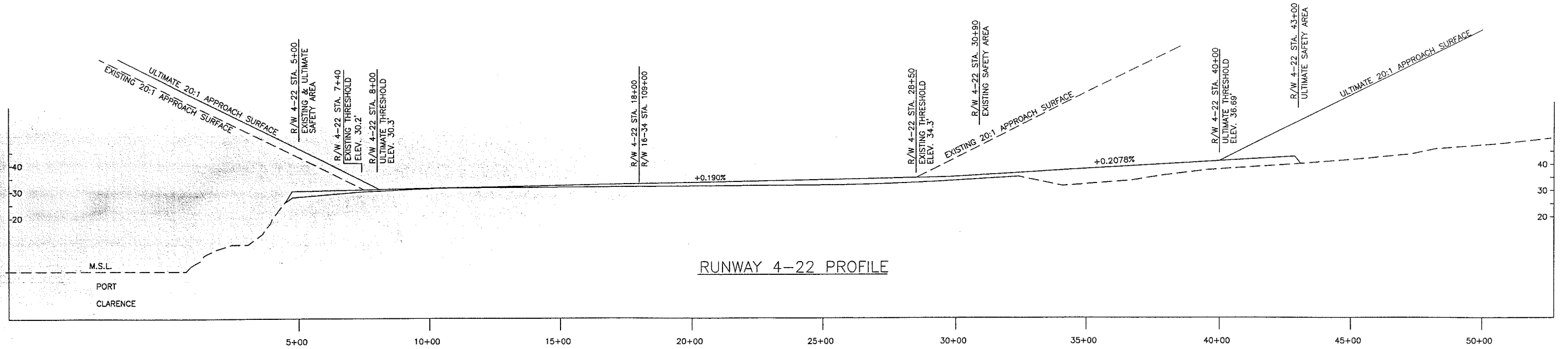
SHEET
1 OF 4



RUNWAY 4 INNER APPROACH PLAN



RUNWAY 22 INNER APPROACH PLAN



RUNWAY 4-22 PROFILE

DESIGN MD	
DRAWN RP	
CHECKED PKS	
BY	DATE
REVISIONS	

STATE OF ALASKA
 DEPARTMENT OF TRANSPORTATION AND PUBLIC FACILITIES
 NORTHERN REGION--DESIGN AND CONSTRUCTION--AVIATION

APPROVED
Patricia D. Miller
 PATRICIA D. MILLER, P.E. AIRPORT DESIGN GROUP CHIEF

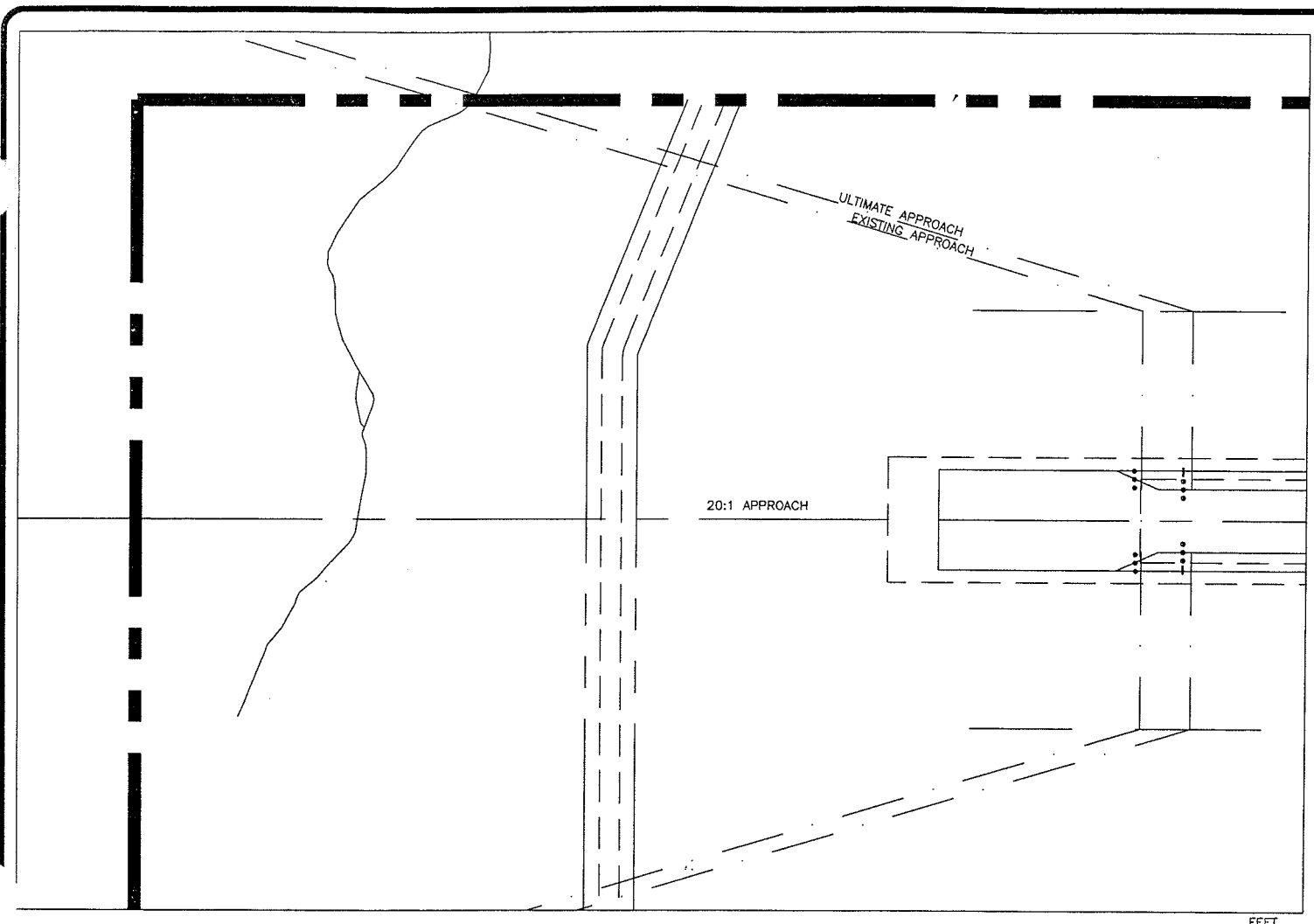
DATE *4/3/03*

LAYOUT PLAN Approved:
 By *John T. Lovett*
 AIRPORTS DIVISION, ALASKAN REGION

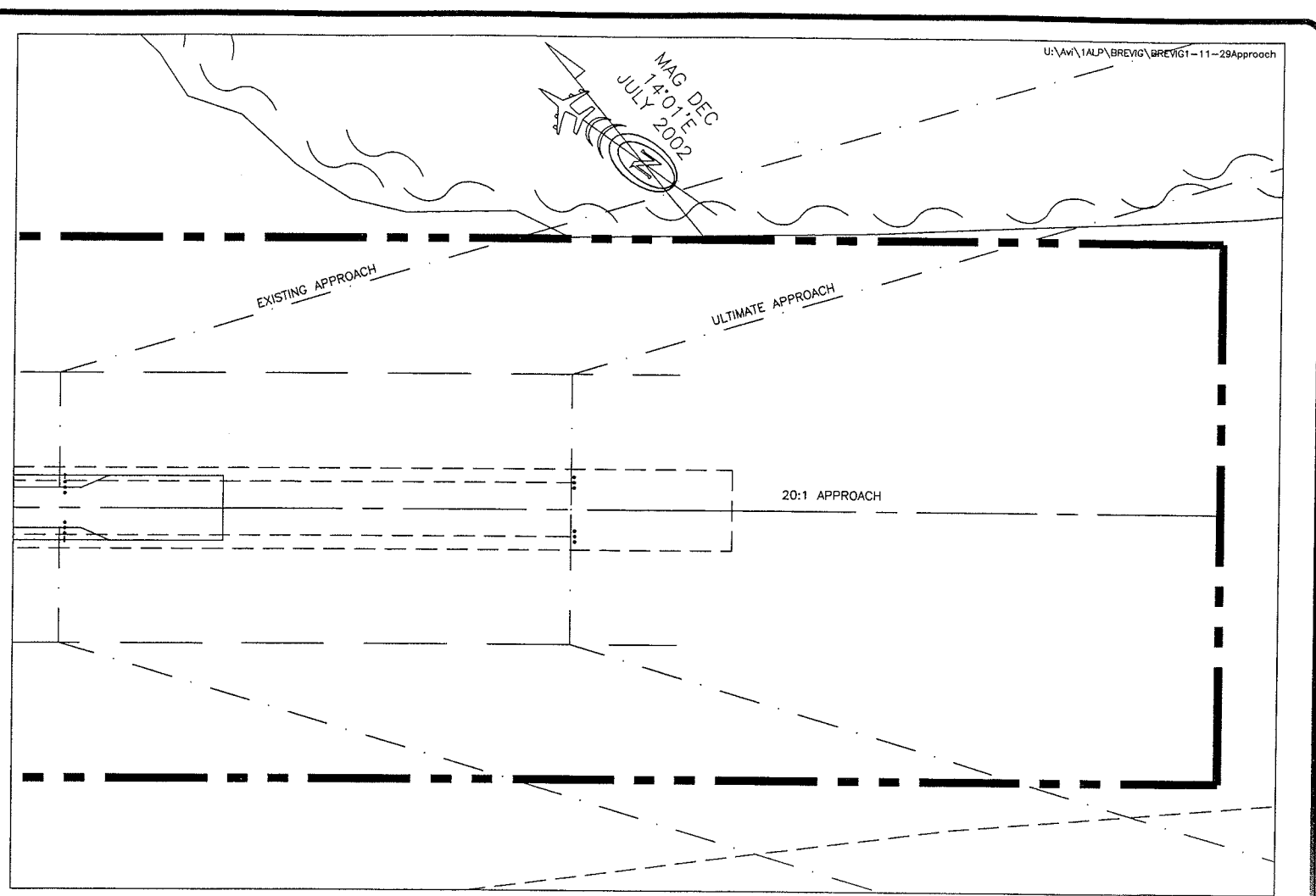
Date *8/18/03*
 AIRSPACE: 95AAL-016NRA

BREVIG MISSION AIRPORT
 INNER PORTION OF THE APPROACH
 SURFACE PLANS & PROFILE

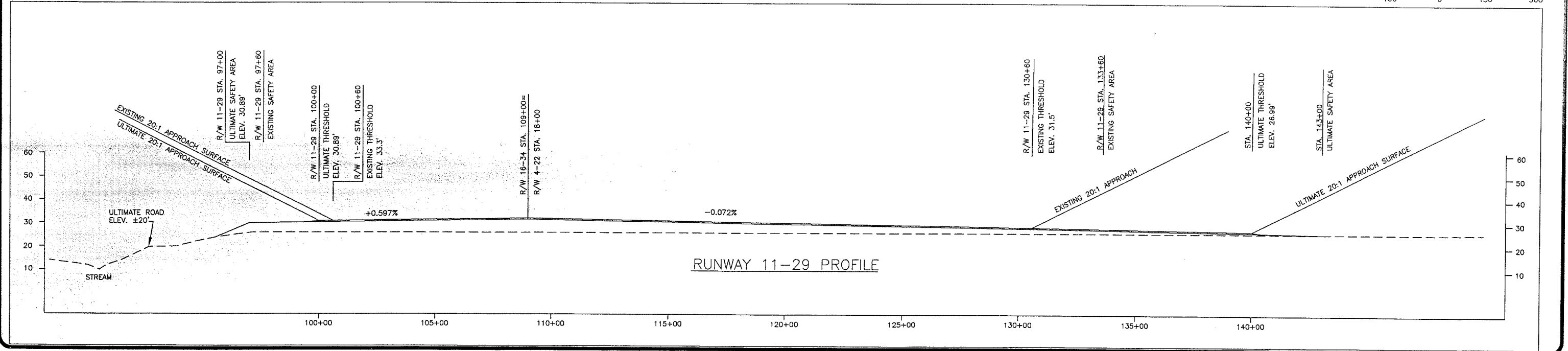
SHEET
 2 OF 4



RUNWAY 11 INNER APPROACH PLAN



RUNWAY 29 INNER APPROACH PLAN



RUNWAY 11-29 PROFILE

DESIGN_MD	
DRAWN_RP	
CHECKED_PKS	

BY	DATE	REVISIONS
	8/18/03	FAA APPROVED
RP	8/15/02	AS-BUILT
FAA	9/6/96	FAA APPROVED

STATE OF ALASKA
 DEPARTMENT OF TRANSPORTATION AND PUBLIC FACILITIES
 NORTHERN REGION-DESIGN AND CONSTRUCTION-AVIATION

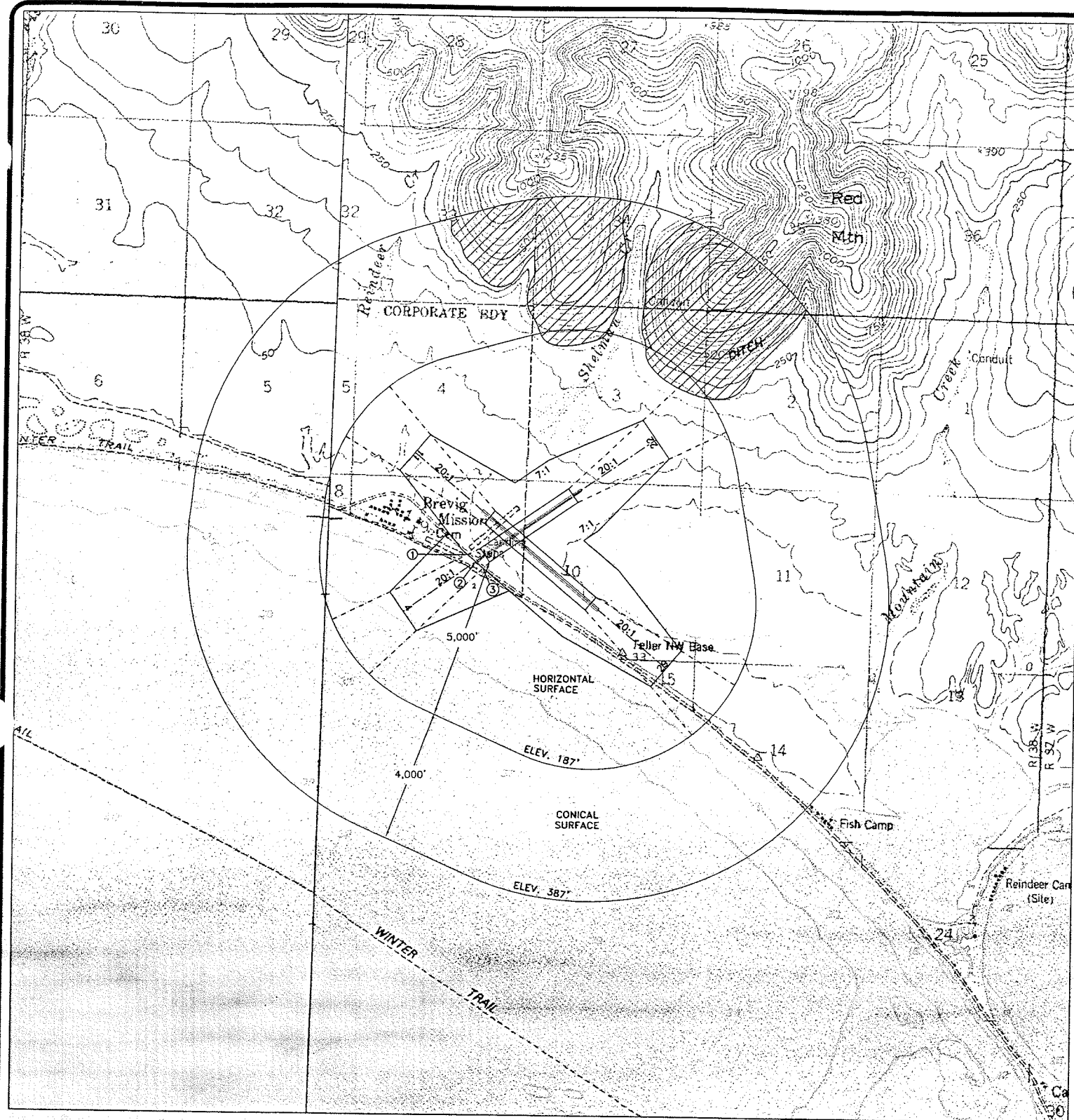
APPROVED
 /s/ *Patricia D. Miller* DATE *4/9/09*
 PATRICIA D. MILLER, P.E. AIRPORT DESIGN GROUP CHIEF

LAYOUT PLAN Approved:
 By *John J. Lovett*
 AIRPORTS DIVISION, ALASKAN REGION
 Date 8/18/03
 AIRSPACE: 95AAL-016NRA



BREVIG MISSION AIRPORT
 INNER PORTION OF THE APPROACH
 SURFACE PLANS & PROFILE

SHEET
 3 OF 4



MAG DEC
14°01'E
JULY 2002

 FAR PART 77 PENETRATIONS
1, 2, & 3: EXISTING ROAD CLEARANCE 8.9'

AIRSPACE VICINITY MAP
T2S, R38W KATEEL RIVER MERIDIAN, ALASKA
USGS TELLER (B-3)
SCALE: 1"=2000'

DESIGN MD

DRAWN RP

CHECKED PKS

BY	DATE	REVISIONS
	8/18/03	FAA APPROVED
RP	8/15/02	AS-BUILT
FAA	9/5/96	FAA APPROVED

STATE OF ALASKA
DEPARTMENT OF TRANSPORTATION AND PUBLIC FACILITIES
NORTHERN REGION-DESIGN AND CONSTRUCTION-AVIATION
APPROVED
/s/ *Patricia D. Miller* DATE *4/3/03*
PATRICIA D. MILLER, P.E. AIRPORT DESIGN GROUP CHIEF

LAYOUT PLAN Approved:
By *John J. Lovett*
AIRPORTS DIVISION, ALASKAN REGION
Date 8/18/03
AIRSPACE: 95AAL-016NRA

BREVIG MISSION AIRPORT
AIRSPACE

SHEET
4 OF
4