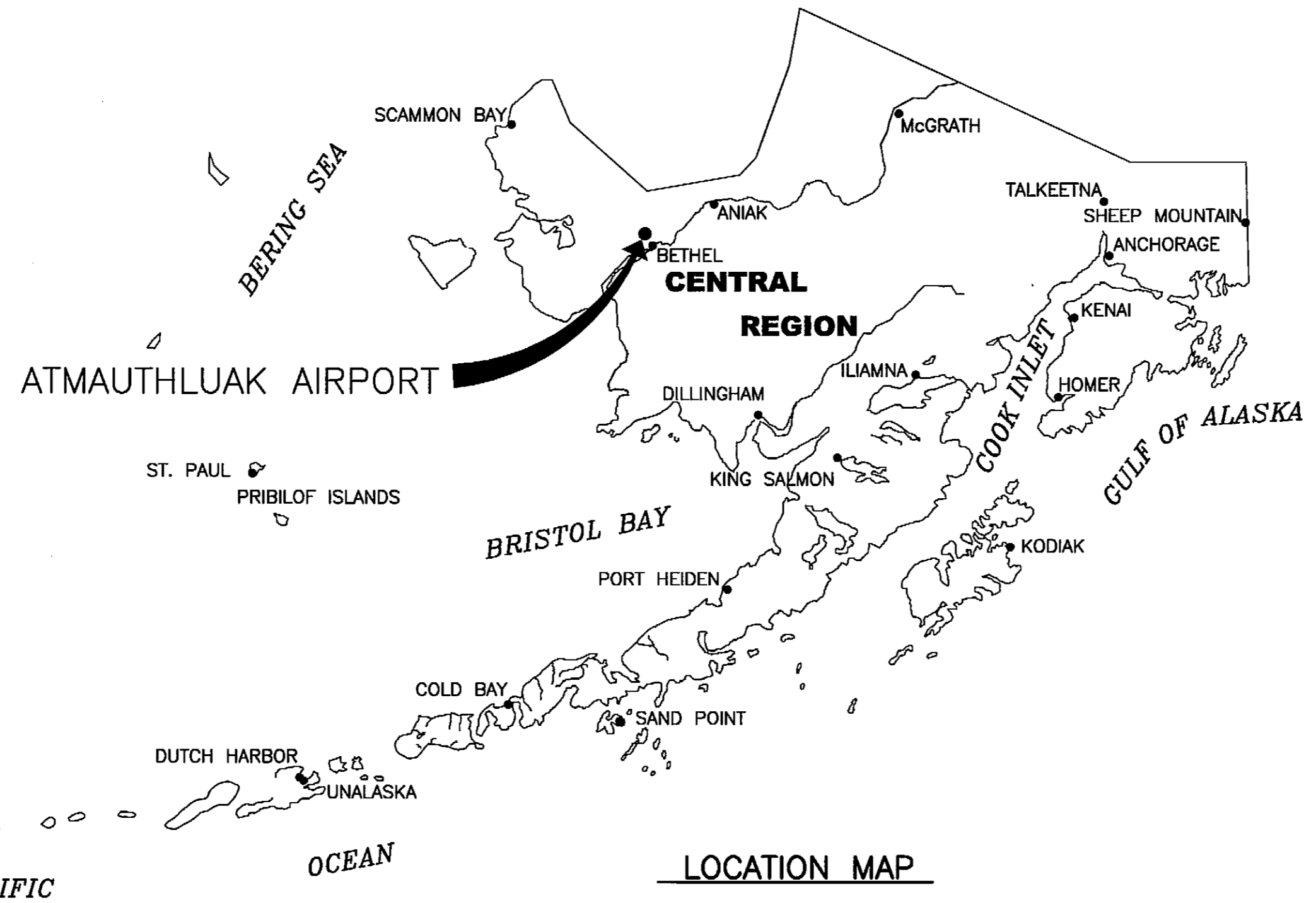


Date Plotted: 8/06/2006, 8:34 AM
 Drawn By: [Signature]
 Checked By: [Signature]
 File Name: W:\Projects\Atmautluak\A.P.\asbuit\2006\windrose.dwg

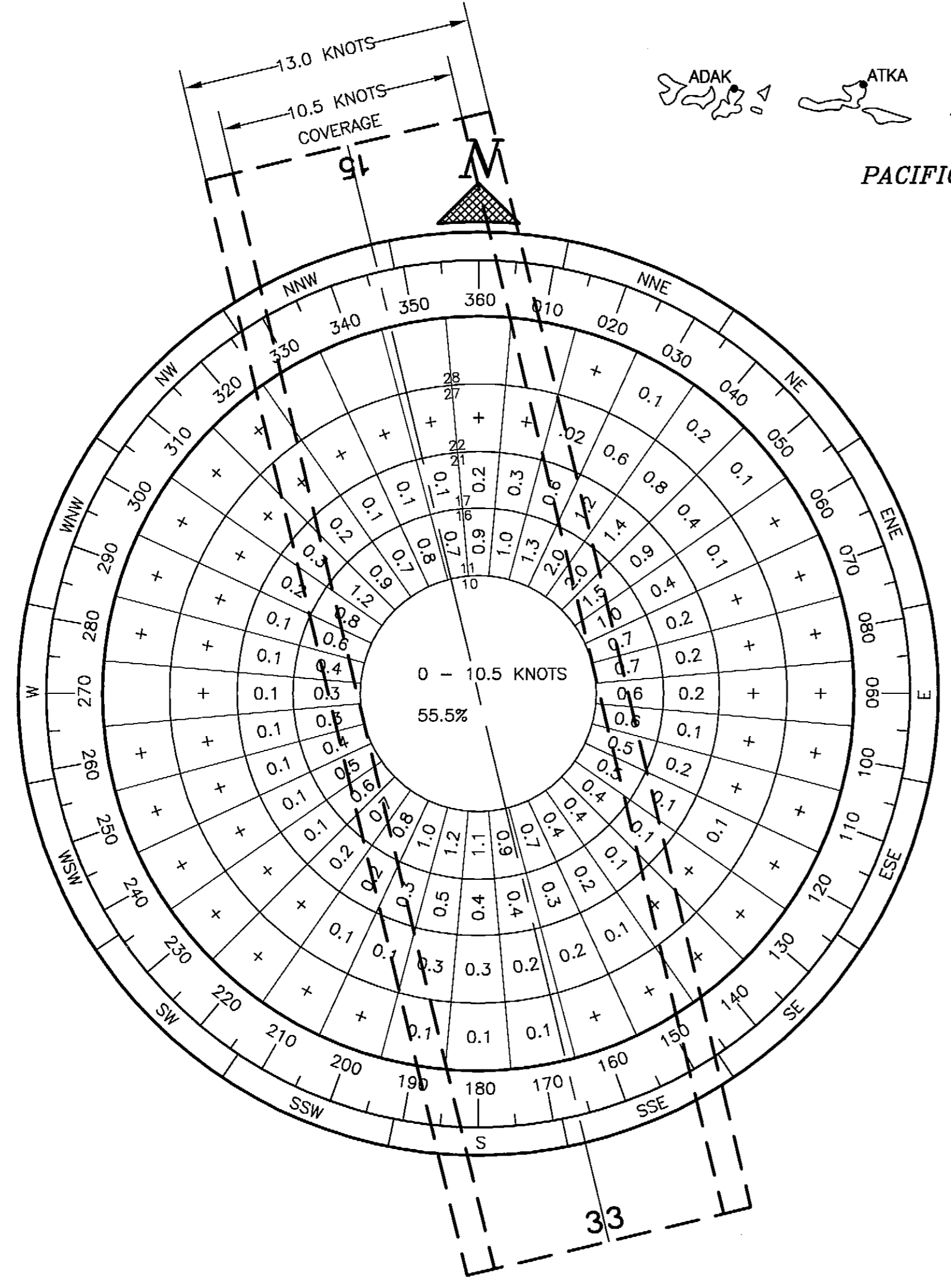


AIRPORT DATA TABLE	
ITEM	EXISTING/ULTIMATE
ICAO IDENTIFIER	NONE
NATIONAL AIRPORT IDENTIFIER	442
FAA SITE NUMBER	50044.*A
AIRPORT ELEVATION NAVD88	14.5 ft
AIRPORT REFERENCE CODE	B-I
MEAN MAX. TEMPERATURE, HOTTEST MONTH	60°F
AIRPORT AND TERMINAL NAVIGATION AIDS	ROTATING BEACON GPS
TAXIWAY LIGHTING/MARKING	M. I.
OBSTRUCTION SURVEY SOURCE & TYPE	NONE
MAGNETIC DECLINATION, YEAR, RATE OF CHANGE	14°33' E, 2006 -0°11'W/YEAR

RUNWAY 15/33 DATA TABLE	
ITEM	EXISTING/ULTIMATE
RUNWAY TYPE	UTILITY OR OTHER THAN UTILITY
FAR PART 77 APPROACH CATEGORY V, NPI, P	NPI/ NPI
APPROACH SURFACES	20:1/ 20:1
VISIBILITY MINIMUM	1 SM
RUNWAY SURFACE	GRAVEL
PAVEMENT STRENGTH SW, DW, DTW, DDTW x1000lbs	N/A
AIRCRAFT APPROACH CATEGORY	B
AIRPLANE DESIGN GROUP	I
TRUE BEARING	N13° 42' 42"W
EFFECTIVE GRADE	0 %
TOUCHDOWN ELEVATION NAVD88	13/14.5
RUNWAY DIMENSIONS	75 x 3000
RUNWAY SAFETY AREA RSA DIMENSIONS	120 x 3480
LENGTH BEYOND R/W END	240
RUNWAY PROTECTION ZONE RPZ DIMENSIONS	500 x 700 x 1000
RUNWAY OBJECT FREE AREA OFA DIMENSIONS	400 x 3480
LENGTH BEYOND R/W END OR STOPWAY	240
RUNWAY OBSTACLE FREE ZONE OFZ DIMENSIONS	250 x 3400
RUNWAY LIGHTING	M.I.
RUNWAY MARKING TYPE	NONE
RUNWAY VISUAL APPROACH AIDS	PAPI, REIL

GEOGRAPHIC COORDINATES TABLE		
ITEM	EXISTING/ULTIMATE LATITUDE	EXISTING/ULTIMATE LONGITUDE
ARP	60°52'4.35"N	162°16'27.40"W
THRESHOLD RW 15	60°52'18.70"N	162°16'34.57"W
THRESHOLD RW 33	60°51'50.00"N	162°16'20.21"W

LEGEND		
ITEM	EXISTING	ULTIMATE
PROPERTY LINE	---	---
BUILDING RESTRICTION LINE	---	---
AVIATION & HAZARD EASEMENT	---	---
AIRPORT REFERENCE POINT A.R.P.	⊙	⊙
WIND CONE AND SEGMENTED CIRCLE	⊙	⊙
CONTOURS	10-	10-
ROADWAYS	---	---
BUILDINGS	▬	▬
ROTATING BEACON	⊙	⊙
SHORELINE	~	~
THRESHOLD LIGHTS	●●●	○○○
REIL	●	○
PAPI	■ ■ ■ ■	□ □ □ □



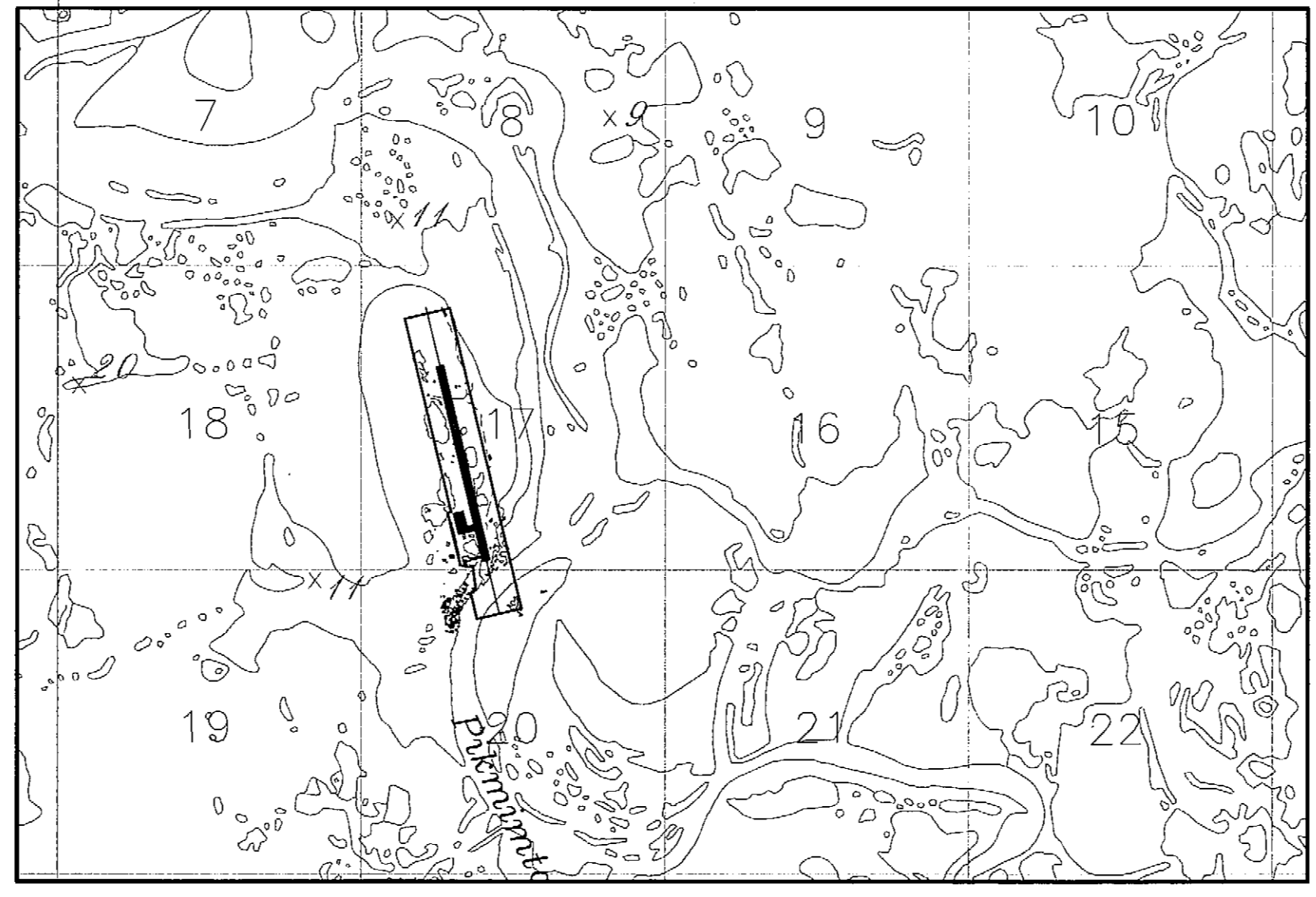
WIND DATA

NOTE: WIND SPEED IS INDICATED IN KNOTS.

WIND COVERAGE: 10.5 KNOTS 79.0%
 13.0 KNOTS 87.2%

SOURCE: N.O.A.A. - DEPARTMENT OF COMMERCE DATA IS FOR BETHEL, ALASKA WHICH IS LOCATED 17.3 NAUTICAL MILES S.E. OF ATMAUTLUAK.

PERIOD: JAN. 1984 TO JAN. 1994



VICINITY MAP

T 9 N, R 73 W, SEC. 17, 18, 19, & 20
 SEWARD MERIDIAN
 U.S.G.S. BAIRD INLET D-1, ALASKA

NOTE: ELEVATIONS SHOWN ON THIS MAP ARE IN FEET.

MODIFICATION TO STANDARDS/ NON STANDARD CONDITIONS		
DESCRIPTION	STANDARD	EXISTING/ULTIMATE
WIND COVERAGE	95.0%	87.2% **
RUNWAY WIDTH	60	75 **
TAXIWAY WIDTH	25	40
TAXIWAY SAFETY AREA WIDTH	49	79

** INCREASED WIND COVERAGE IS A RESULT OF INCREASING THE RUNWAY SURFACE WIDTH TO THE B-II STANDARD OF 75 FEET.

BY	DATE	REVISION
APPROVED:		DATE: 6-8-06
ROBERT A. CAMPBELL, P.E.		PRECONSTRUCTION ENGINEER
RECOMMENDED:		DATE: 6/6/2006
HARVEY M. DOUTHIT, P.E.		DESIGN SECTION CHIEF

AIRPORT LAYOUT PLAN CONDITIONAL APPROVAL SUBJECT TO ALP APPROVAL LETTER DATED 7/21/2006
 FAA AIRSPACE REVIEW NUMBER: 95-AAL-112-NRA

DATE: 7/11/2006
 AIRPORTS DIVISION ALASKAN REGION, AAL-672

DRAWING INDEX	
SHT #	TITLE
1	WIND ROSE, DATA TABLES, & VICINITY MAP
2	AIRPORT LAYOUT PLAN
3	INNER PORTION OF THE APPROACH SURFACES
4	AIRPORT AIRSPACE
5	PROPERTY MAP

**STATE OF ALASKA
DEPARTMENT OF TRANSPORTATION
AND PUBLIC FACILITIES
CENTRAL REGION**

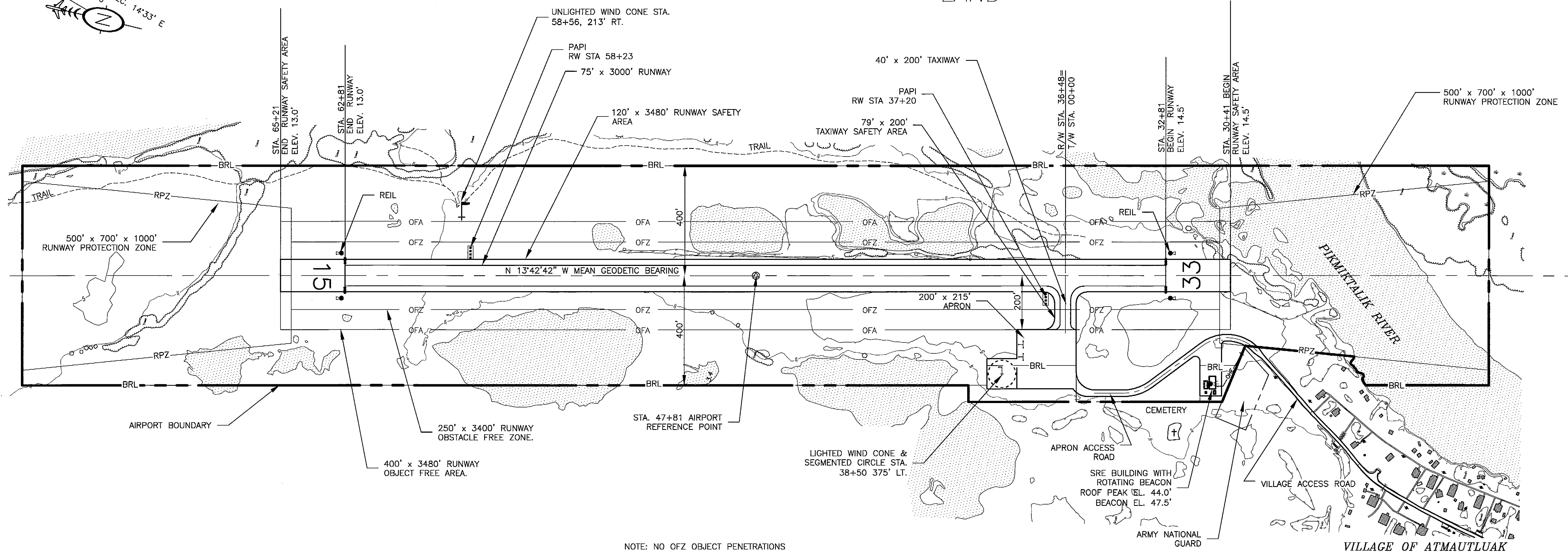
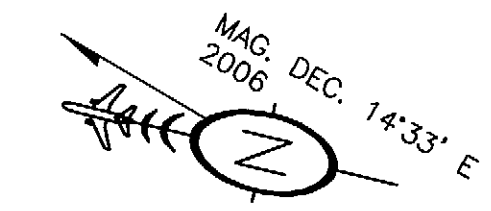
ATMAUTLUAK AIRPORT
 ATMAUTLUAK, ALASKA
 AIRPORT LAYOUT PLAN
 WINDROSE, DATA TABLES
 VICINITY MAP

DATE: 6/06/2006,
 SHEET: 1 OF 5

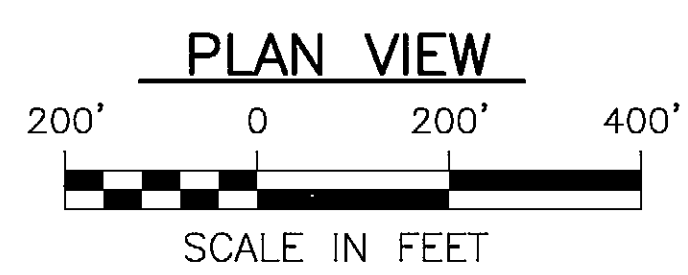
Date Plotted: 6/06/2006, 9:39 AM
 Layout Name: P:\Projects\Atmautluak\ALP-Sub\1206\alpproc.dwg
 File Name:

UNDEVELOPED LAND

UNDEVELOPED LAND



NOTE: NO OFZ OBJECT PENETRATIONS



NOTES

- ALL ELEVATIONS ARE IN NAVD 88

BUILDING DATA TABLE					
BUILDING ID #	DESCRIPTION	BUILDING STA/OFFSET	TOP ELEV (MSL)	AMOUNT OF PENETRATION	OBSTRUCTION MARKING
1	SRE BUILDING	31+07/345' L	48'	0'	NONE *

* SRE BUILDING PENETRATES PART 77 TRANSITIONAL SURFACE

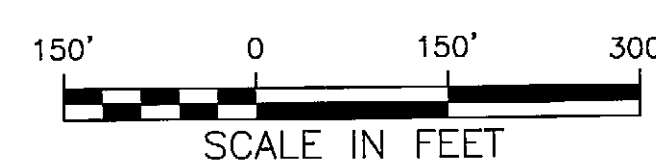
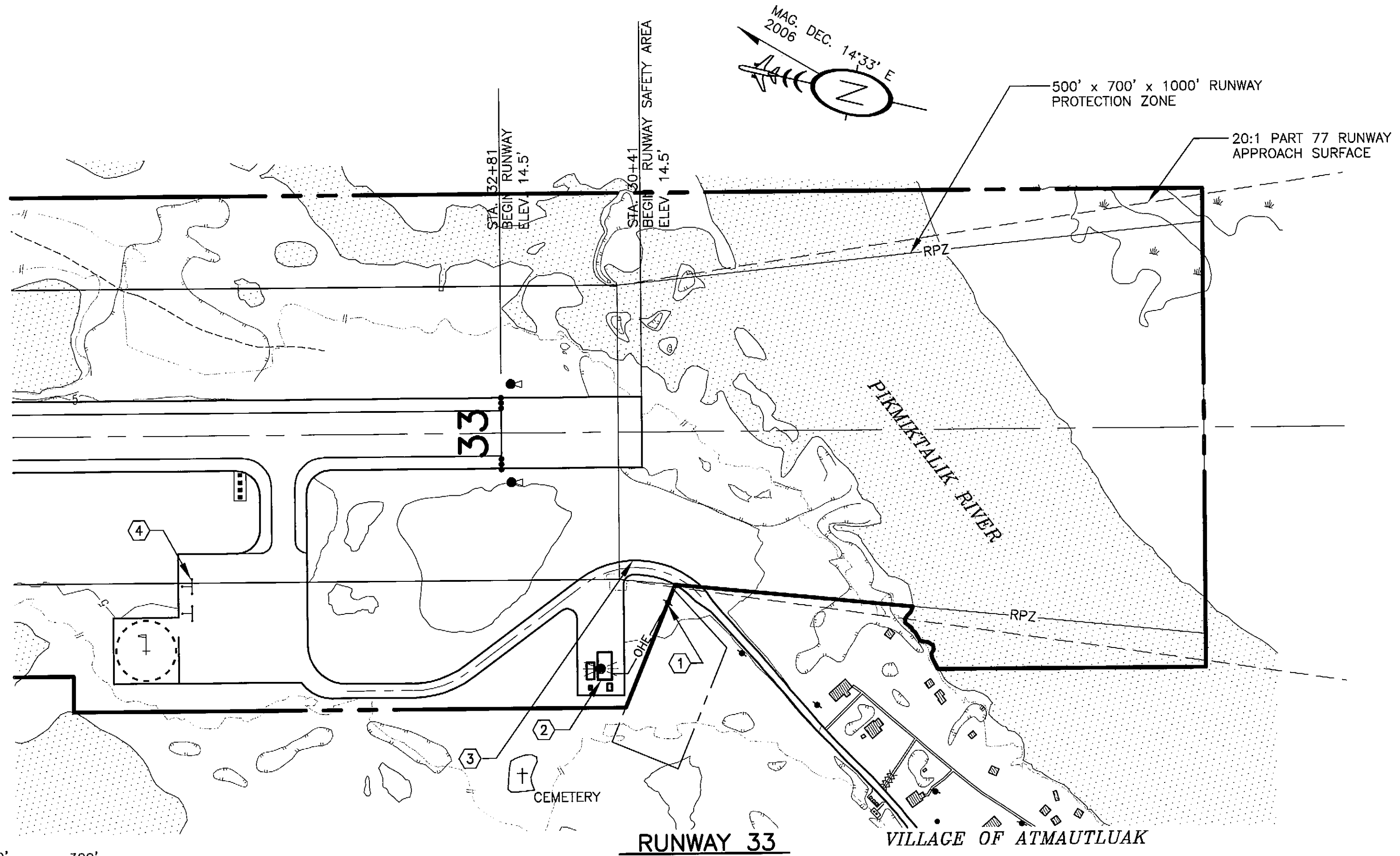
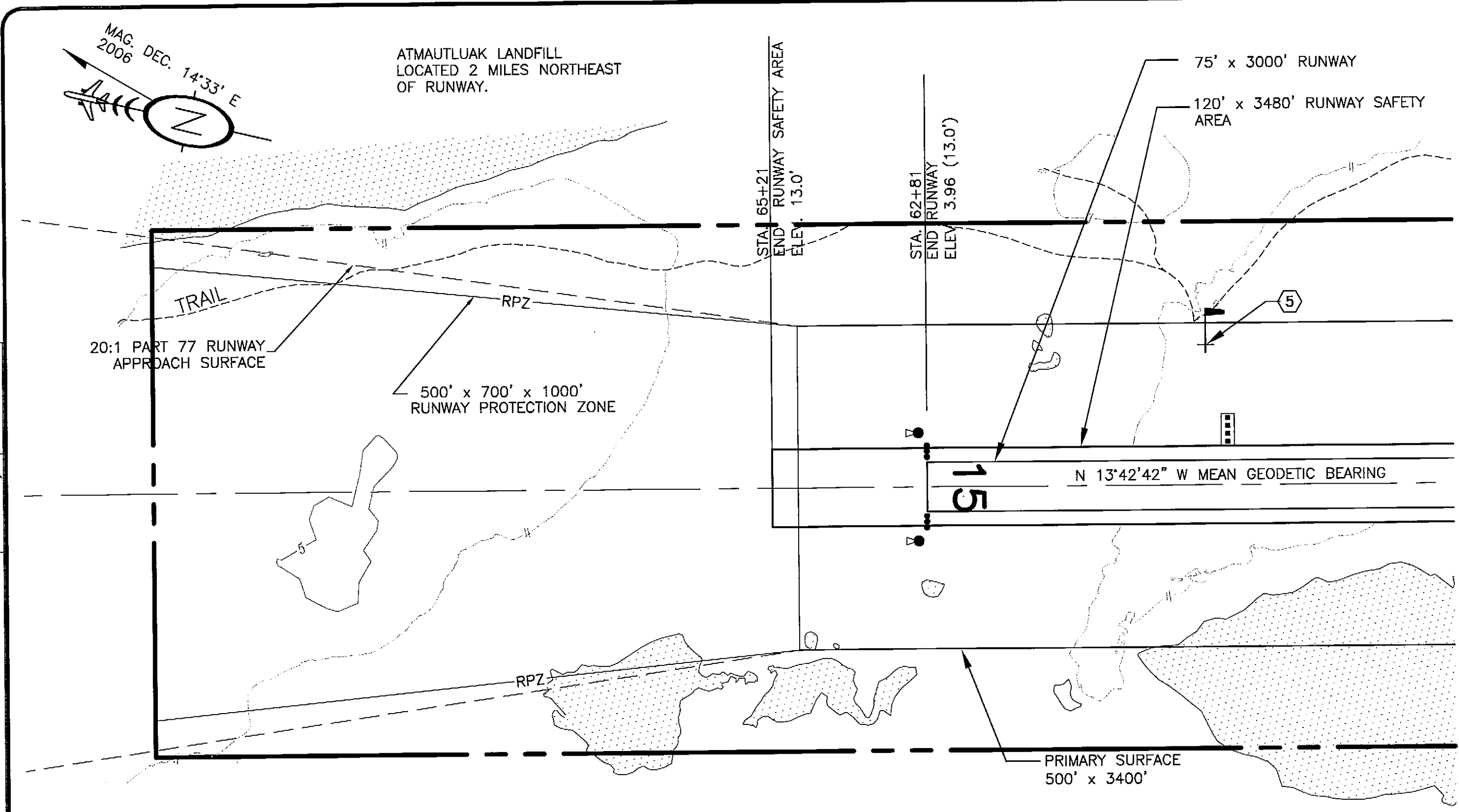
JTL	7/23/06	FOA APPROVAL	
BY	DATE	REVISION	

STATE OF ALASKA
 DEPARTMENT OF TRANSPORTATION
 AND PUBLIC FACILITIES
 CENTRAL REGION

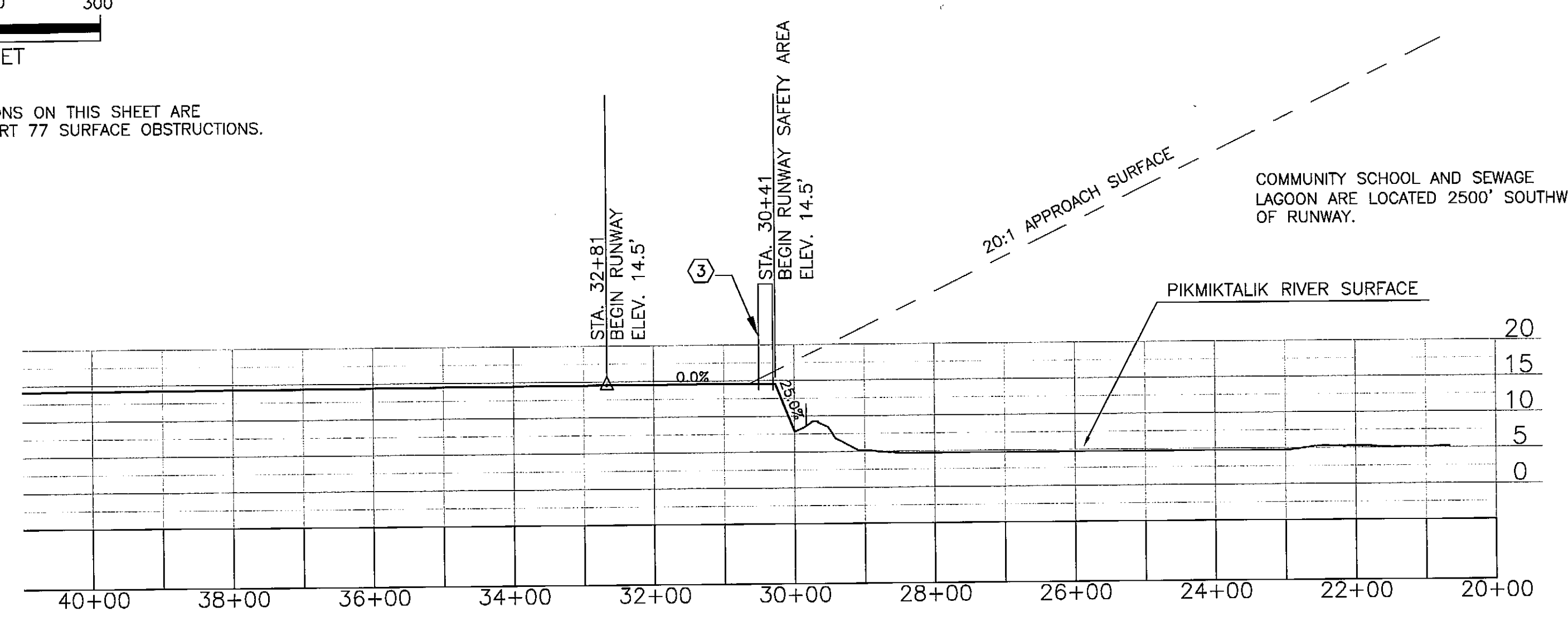
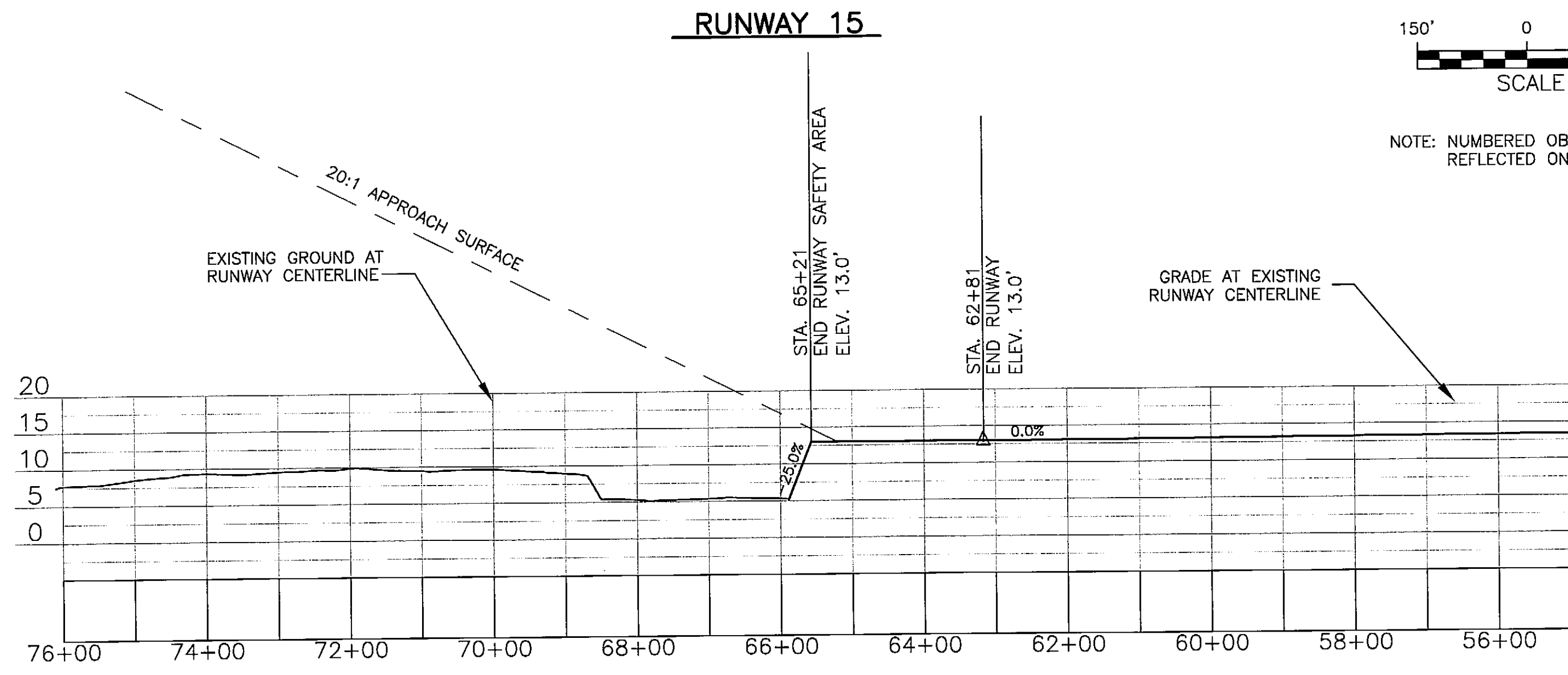
ATMAUTLUAK AIRPORT
 ATMAUTLUAK, ALASKA
 AIRPORT LAYOUT PLAN
 EXISTING PLAN

DATE: 6/06/2006
 SHEET: 2 OF 5

Date Plotted: 6/06/2006 12:02 PM
 Layout Name: INNER APPROACH
 File Name: X:\Projects\Atmautluak\APP-surface\2006\appapp.dwg
 Designed By:
 Drawn By:
 Checked By:



NOTE: NUMBERED OBSTRUCTIONS ON THIS SHEET ARE REFLECTED ON THE PART 77 SURFACE OBSTRUCTIONS.



RUNWAY 15

20:1 APPROACH SURFACE OBSTRUCTION TABLE (INNER PORTION RW 15)

ID #	DESCRIPTION	STATION/OFFSET	ELEVATION	SURFACE PENETRATED	SURFACE ELEVATION	AMOUNT PENETRATION	DISPOSITION	STAGE TO CORRECT
	NONE							

- NOTES:
- 1) THERE ARE NO OBSTRUCTIONS IN THE APPROACH TO RUNWAY 15 THEREFORE THE OBSTRUCTION CLEARANCE SLOPE IS ESTABLISHED AS 50:1 PER FAA AC 150/5200-35, CHAP 4.
 - 2) THERE ARE NO OBJECT PENETRATIONS IN THE RUNWAY APPROACH END SITING SURFACES OF RUNWAY 15, AS DEFINED IN FAA AC 150/5300-13, CHG 9, APPENDIX 2, TABLE A2-1, LINE 5.

RUNWAY 33

20:1 APPROACH SURFACE OBSTRUCTION TABLE (INNER PORTION RW 33)

ID #	DESCRIPTION	STATION/OFFSET	ELEVATION	SURFACE PENETRATED	SURFACE ELEVATION	AMOUNT PENETRATION	DISPOSITION	STAGE TO CORRECT
	NONE							

- NOTES:
- 1) THERE ARE NO OBJECT PENETRATIONS IN THE RUNWAY APPROACH END SITING SURFACES OF RUNWAY 33, AS DEFINED IN FAA AC 150/5300-13, CHG 9, APPENDIX 2, TABLE A2-1, LINE 5.

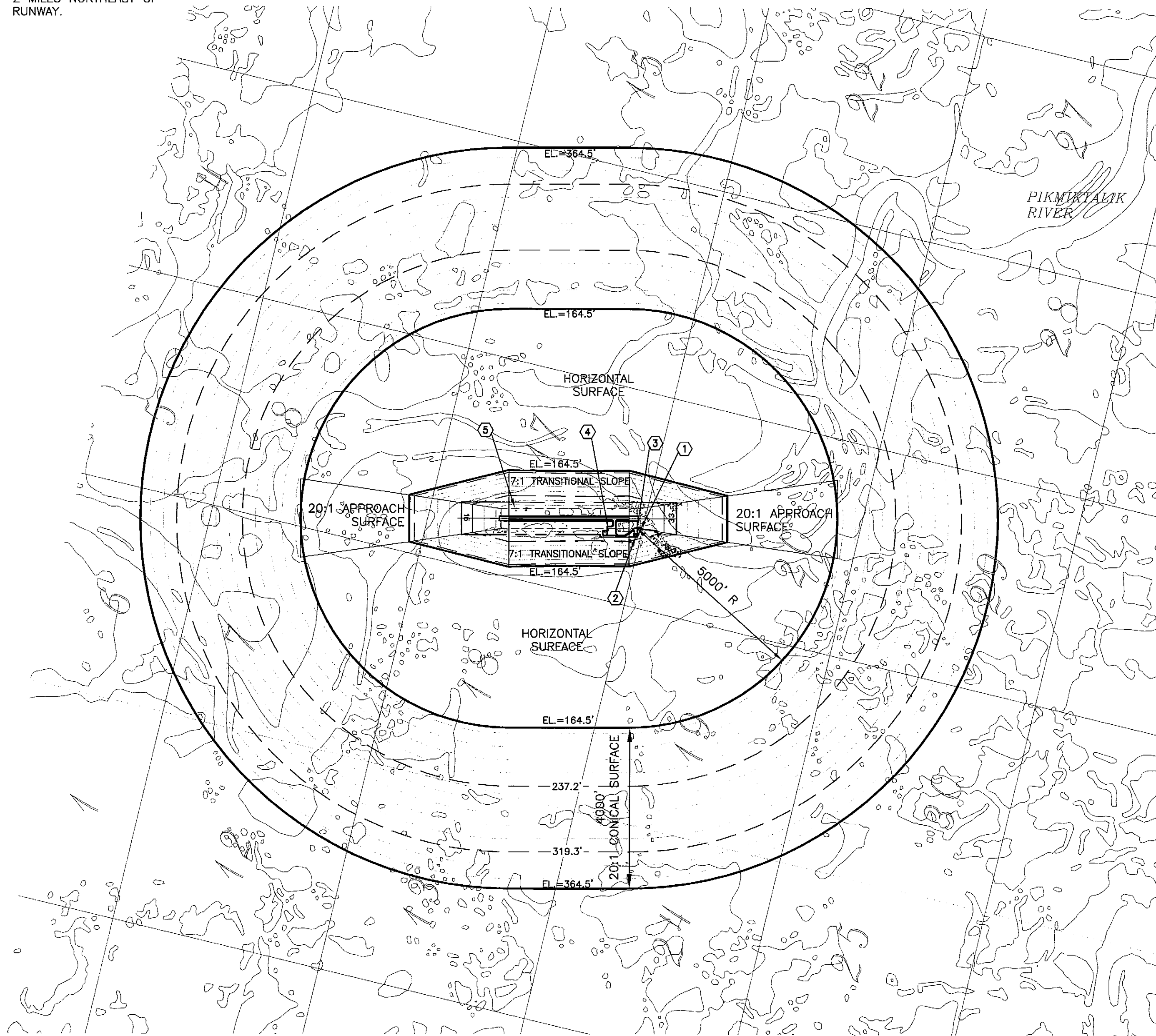
BY	DATE	REVISION
STC	7/21/06	PHD

STATE OF ALASKA
DEPARTMENT OF TRANSPORTATION
AND PUBLIC FACILITIES
CENTRAL REGION

ATMAUTLUAK AIRPORT
 ATMAUTLUAK, ALASKA
 AIRPORT LAYOUT PLAN
 INNER PORTION OF THE
 APPROACH SURFACE

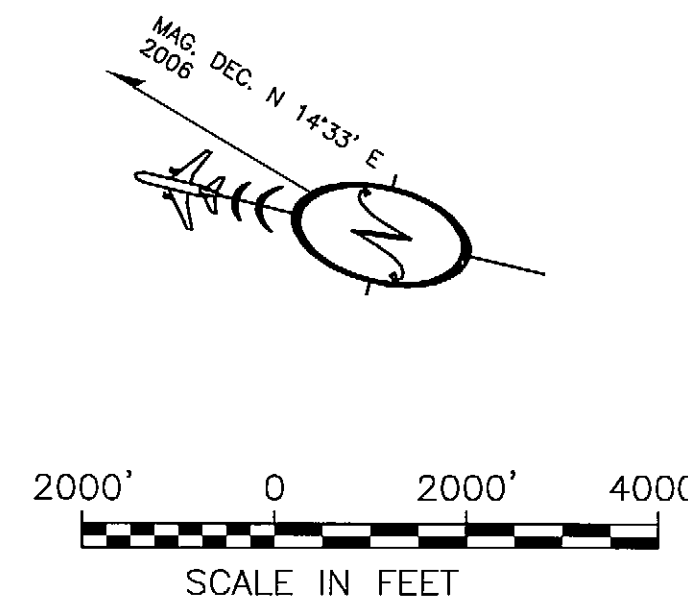
DATE: 6/06/2006,
SHEET: 3 OF 5

ATMAUTLUAK LANDFILL LOCATED
2 MILES NORTHEAST OF
RUNWAY.



ID #	DESCRIPTION	STATION/OFFSET	ELEVATION	SURFACE PENETRATED	SURFACE ELEVATION	AMOUNT PENETRATION	DISPOSITION	STAGE TO CORRECT
①	OHE POLE	29+99/292 LT	36'	TRANSITIONAL	24'	12'	LIGHT	FUTURE
②	SRE BUILDING	31+07/344 LT	48'	TRANSITIONAL	35'	13'	LIGHT	FUTURE
③	ROAD	30+58/213 LT	28.5'	APPROACH	14'	14.5'	NONE	
④	TIE DOWN	38+18/251 LT	29'	PRIMARY	14.5'	14.5'	NONE	
⑤	UNLIGHTED WINDCONE	58+56/213 LT	22'	PRIMARY	13.5'	8.5'	NONE	

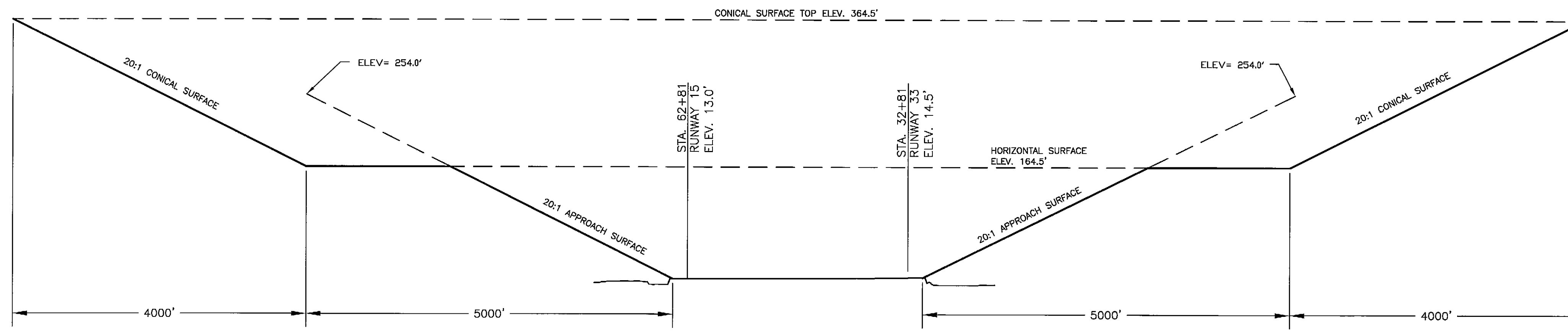
NOTE: SEE INNER PORTION OF THE APPROACH SURFACES DRAWING FOR DETAILED LOCATION FOR THESE OBSTRUCTIONS.



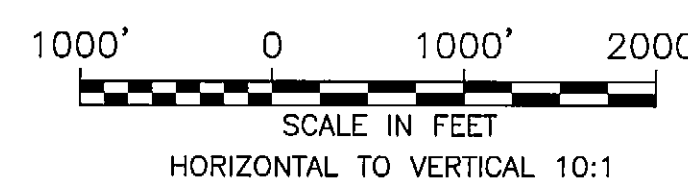
NOTES

1. THE AIRPORT ELEVATION IS 14.5' NAVD 88.
2. ALL GROUND ELEVATIONS ARE LESS THAN 16.5' FEET MEAN SEA LEVEL.
3. APPROACH SURFACES ARE 20:1 BEGINNING 200' FROM THE THRESHOLDS
4. PRIMARY SURFACE WIDTH IS 500'
5. THERE ARE NO KNOWN HEIGHT RESTRICTIONS.

Date Plotted: 6/06/2006 11:28 AM
 Layout Name: W:\Projects\Atmautluak\AUP-Submitt\2006\PA3177.dwg
 File Name: W:\Projects\Atmautluak\AUP-Submitt\2006\PA3177.dwg
 Drawn By:
 Checked By:

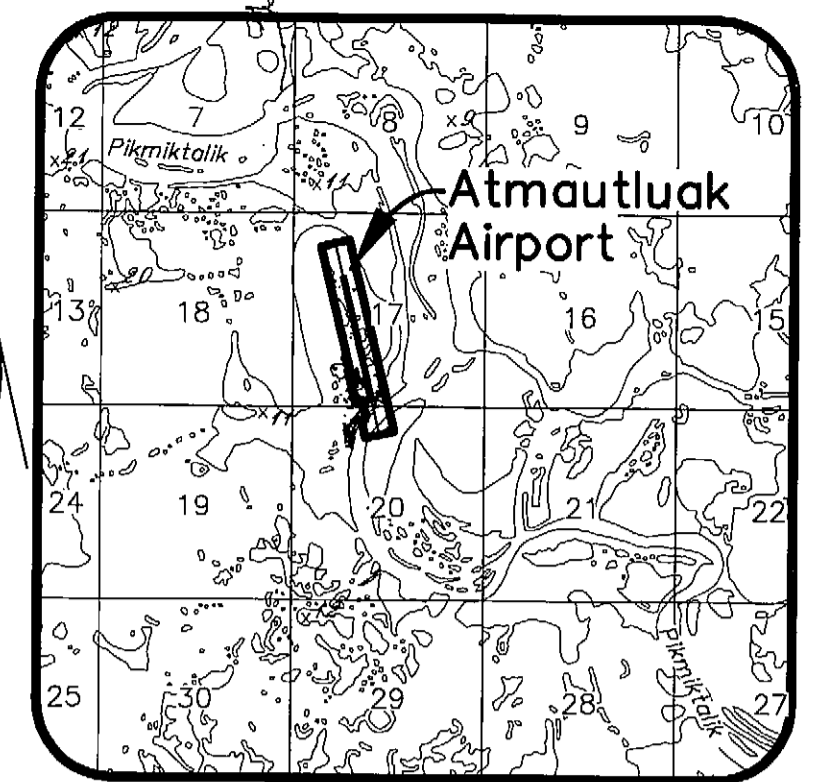
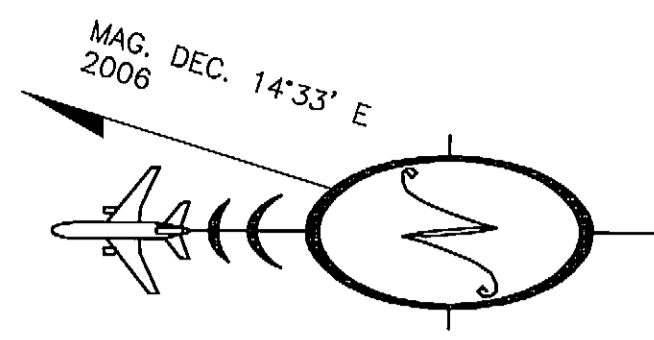


RUNWAY PROFILE



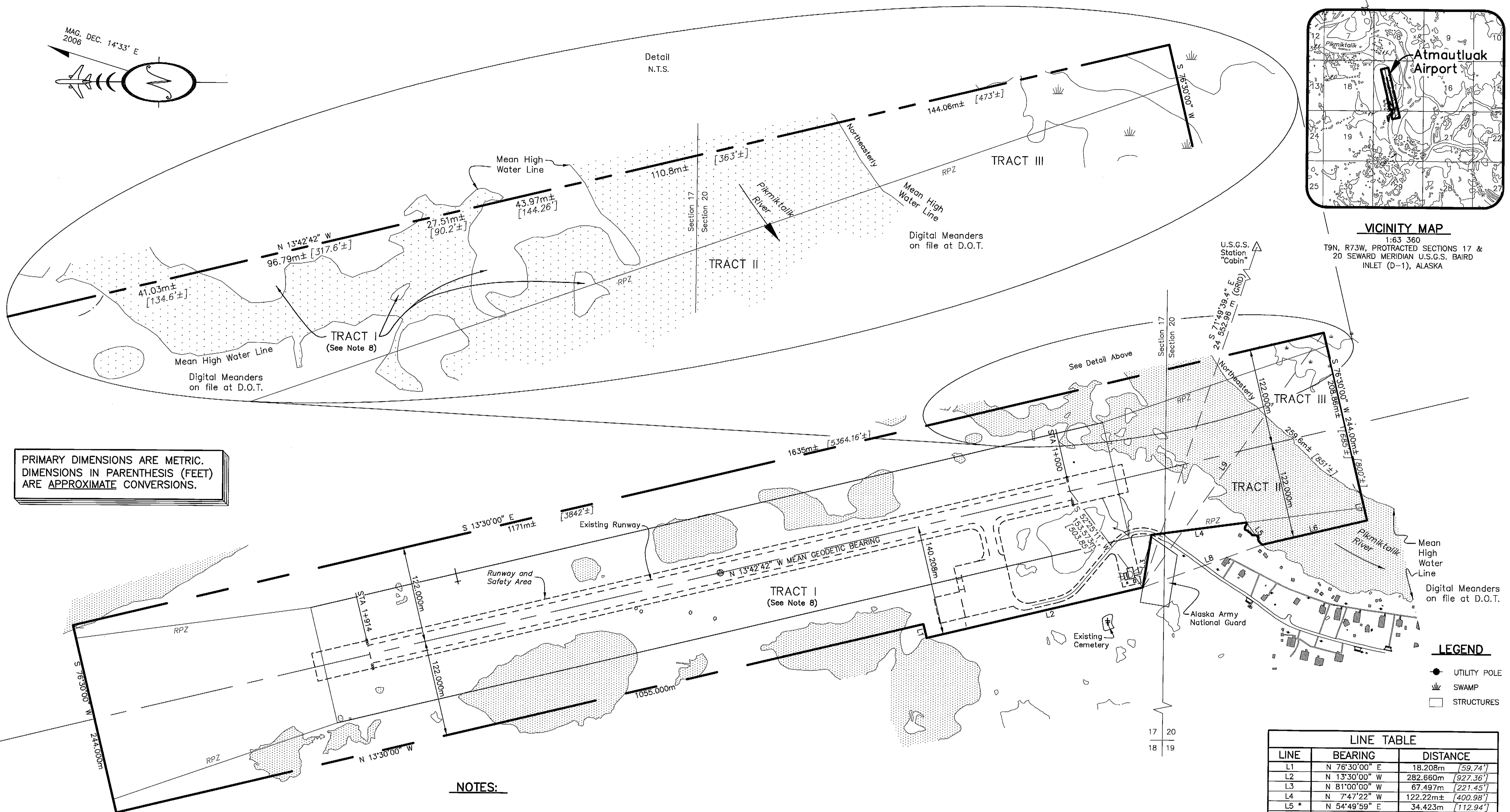
BY	DATE	REVISION
JL	7/04/06	PA3
STATE OF ALASKA DEPARTMENT OF TRANSPORTATION AND PUBLIC FACILITIES CENTRAL REGION		
ATMAUTLUAK AIRPORT ATMAUTLUAK, ALASKA AIRPORT LAYOUT PLAN AIRPORT AIRSPACE		DATE: 6/06/2006, SHEET: 4 OF 5

Date Plotted: 5/06/2006, 10:39 AM
 Layout Name: PROPERTY MAP
 File Name: W:\Projects\Atmautluak\VALP-abuilt 2006\propplan.dwg
 Drawn By:
 Checked By:



VICINITY MAP

1:63 360
 T9N, R73W, PROTRACTED SECTIONS 17 & 20 SEWARD MERIDIAN U.S.G.S. BAIRD INLET (D-1), ALASKA



PRIMARY DIMENSIONS ARE METRIC.
 DIMENSIONS IN PARENTHESIS (FEET)
 ARE APPROXIMATE CONVERSIONS.

- LEGEND**
- UTILITY POLE
 - ☼ SWAMP
 - STRUCTURES

NOTES:

- THE VERTICAL DATUM IS BASED ON AN ASSUMED ELEVATION OF 6.10 METERS AT NAPAIAK ON DOWL ENGINEERS PHOTO PANEL POINT #100. ELEVATIONS WERE CARRIED TO THIS PROJECT WITH GPS BASELINE VECTORS FROM NAPAIAK TO STATION "CABIN" TO THE PROJECT.
- THE HORIZONTAL DATUM IS USGS STATION "CABIN" LOCATED AT BETHEL AIRPORT, NAD83 ASPC ZONE 7, N.756,613.842 METERS, E.508,412.799 METERS HORIZONTAL DATUM CARRIED BY GPS METHODS.
- MAPPED BY AEROMAP U.S., INC. FROM PHOTOGRAPHY DATED 9/29/94 FOR THE STATE OF ALASKA, DEPARTMENT OF TRANSPORTATION AND PUBLIC FACILITIES.
- THIS MAP CONFORMS TO NATIONAL MAP ACCURACY STANDARDS AS RELATED TO THE PROJECT PHOTO CONTROL FOR SCALES OF 1:1000 OR SMALLER.
- THE VERTICAL ACCURACY IS APPROXIMATELY ONE HALF OF THE CONTOUR INTERVAL SHOWN IN ANY GIVEN AREA ON THE MAP. CONTOURS IN VEGETATED AREAS MAY BE LESS ACCURATE, CONTOURS IN DENSE VEGETATION ARE LIKELY TO BE LESS ACCURATE.
- THE SECTION CORNER SHOWN IS A PROTRACTED SECTION CORNER.
- BEARINGS ARE GRID BASED UPON THE ALASKA STATE PLANE COORDINATE SYSTEM, ZONE 7, HAVING THE ORIGIN OF THE COORDINATES AT THE INTERSECTION OF MERIDIAN 162°00'W AND PARALLEL 54°00'N.
- ALL ISLANDS WITHIN THE PIKMIKALIK RIVER AND SLOUGH ARE A PART OF TRACT I.

LINE	BEARING	DISTANCE
L1	N 76°30'00" E	18.208m [59.74']
L2	N 13°30'00" W	282.660m [927.36']
L3	N 81°00'00" W	67.497m [221.45']
L4	N 7°47'22" W	122.22m± [400.98']
L5 *	N 54°49'59" E	34.423m [112.94']
L6	N 13°30'00" W	137.18m± [450±']
L7	S 76°30'00" W	35.13m± [115±']
L8	S 19°59'10" E	161.19m± [529±']
L9	S 54°54'26" E	396.439m [1300.65']

* L5 is NOT a meander line. L5 is a tie for boundary closure checks.

ID #	INTEREST	GRANTOR	GRANTEE	PARCEL SIZE	DATE ACQUIRED	RECORDED DOC NO.	ACQUIRED AIP NO.
TRACT I	FEE- SURFACE BK 72 PG 920	ATMAUTLUAK LIMITED		34.02 ha± 84.0 Ac.±	8/16/96		N/A
TRACT II	FEE- SUBSURFACE BK 72 PG 926	COLISTA CORP		34.02 ha± 84.0 Ac.±	8/16/96		N/A
TRACT II	ILMA BK 71 PG 313	STATE OF ALASKA, DNR		4.17 ha± 10.3 Ac.±	3/6/96		N/A
TRACT III	FEE - SURFACE BK 72 PG 920	ATMAUTLUAK LIMITED		1.71 ha± 4.2 Ac.±	8/16/96		N/A
TRACT III	FEE- SUBSURFACE BK 72 PG 926	COLISTA CORP		1.71 ha± 4.2 Ac.±	8/16/96		N/A



BY	DATE	REVISION
JL	1/24/06	FAA

**STATE OF ALASKA
 DEPARTMENT OF TRANSPORTATION
 AND PUBLIC FACILITIES
 CENTRAL REGION**

ATMAUTLUAK AIRPORT
 ATMAUTLUAK, ALASKA
 AIRPORT LAYOUT PLAN
 PROPERTY MAP

DATE:
6/06/2006.
 SHEET:
5
 OF
5