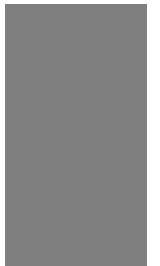
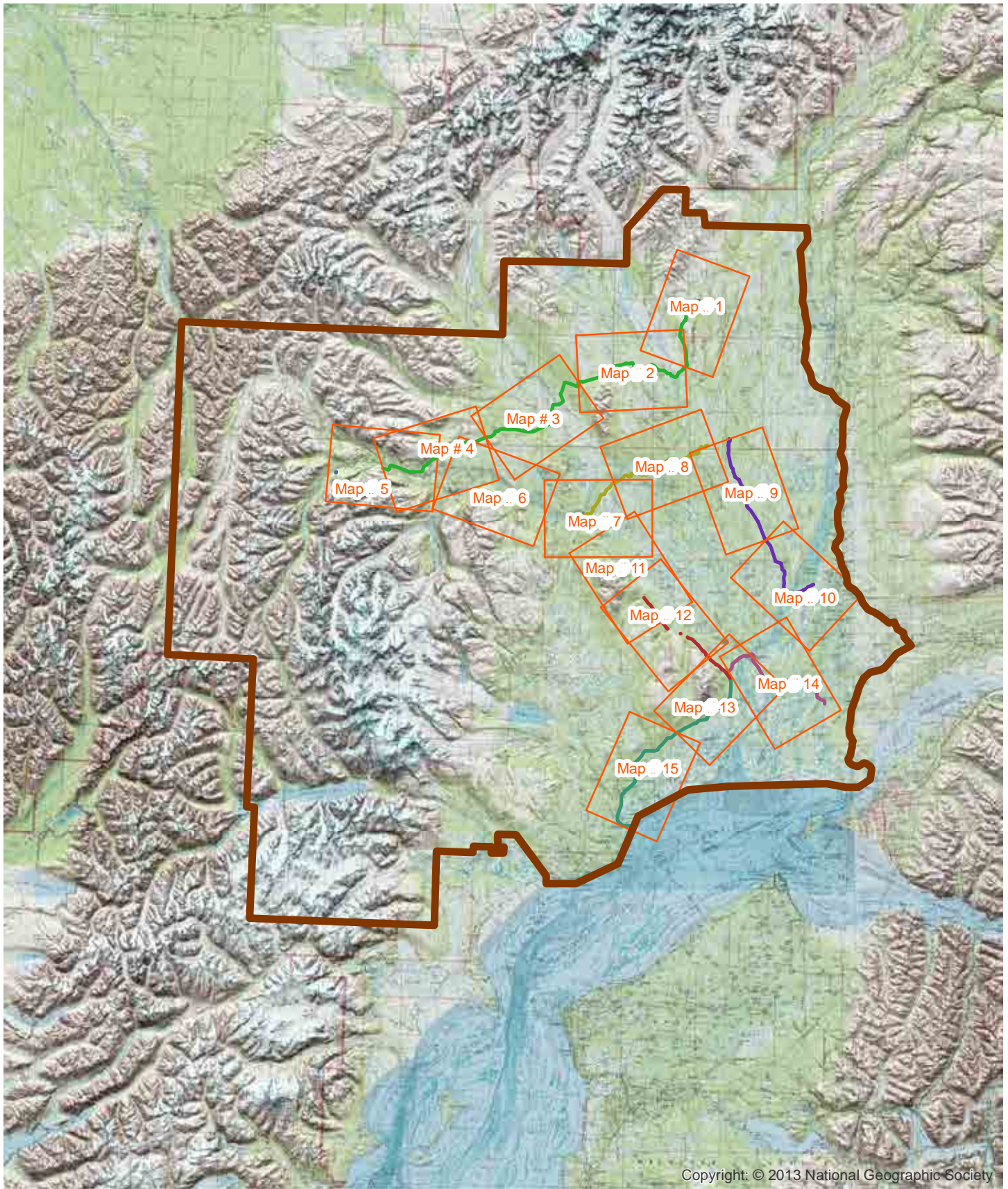


West Susitna Access Reconnaissance Study West Susitna Access to Resource Development

Transportation Analysis Report



Appendix B: Proposed Access Routes Map Index



7/18/2013

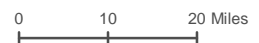
Copyright: © 2013 National Geographic Society

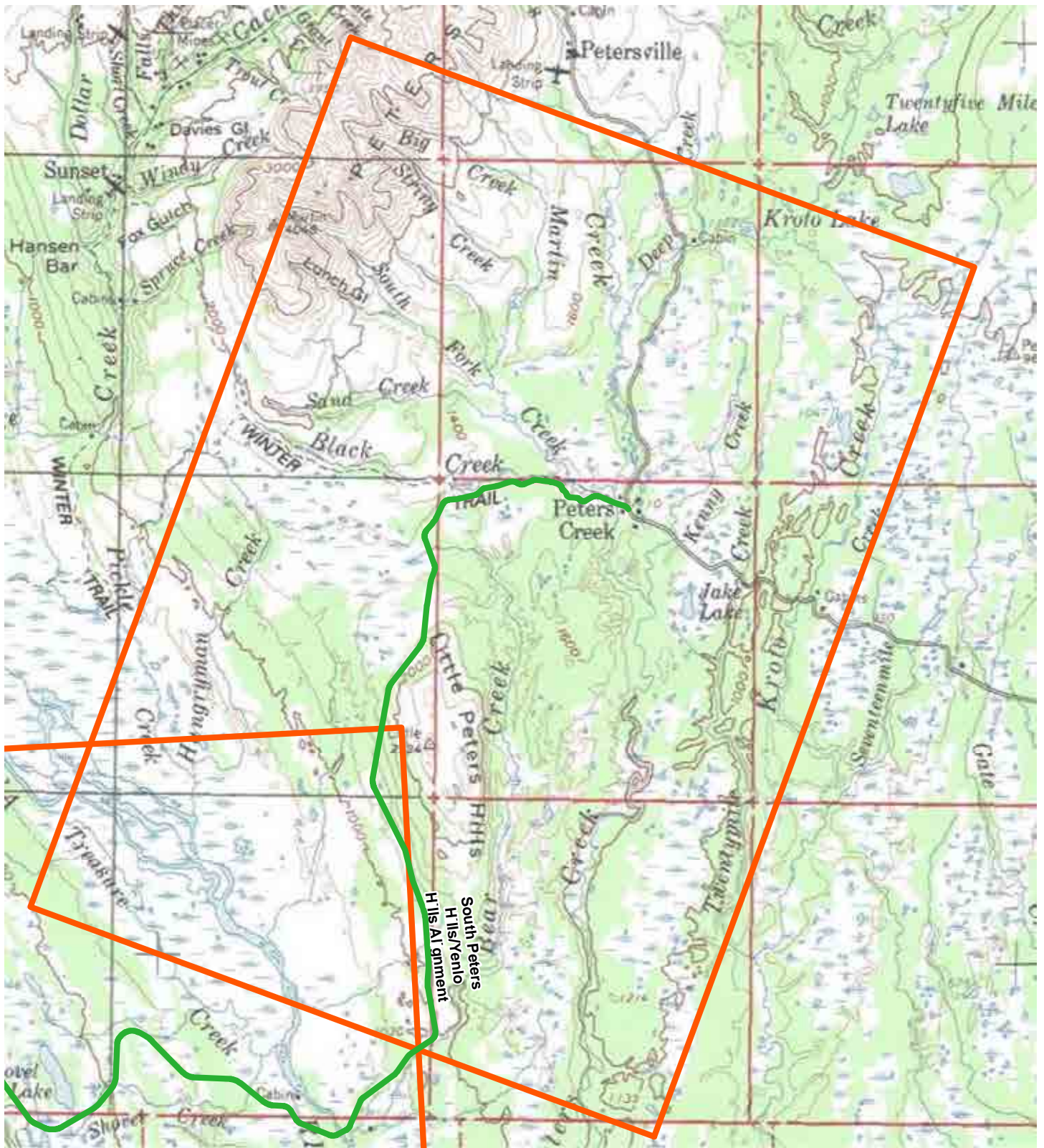
Proposed Corridor Alignments

West Susitna Access to Resource Development

- Study Area
- Alignment Sections
- Skwentna Alignment
- Skwentna River Alignment
- Beluga Alignment
- South Peters Hills/Yenlo Hills Alignment
- Deshka Alignment
- Susitna Crossing Alignment
- East Susitna Alignment

USGS Quad Index Map





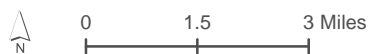
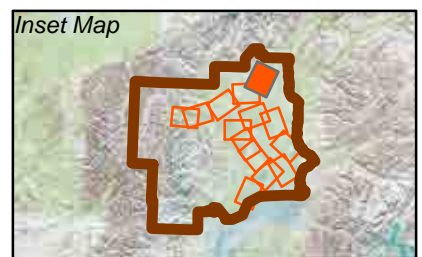
7/18/2013

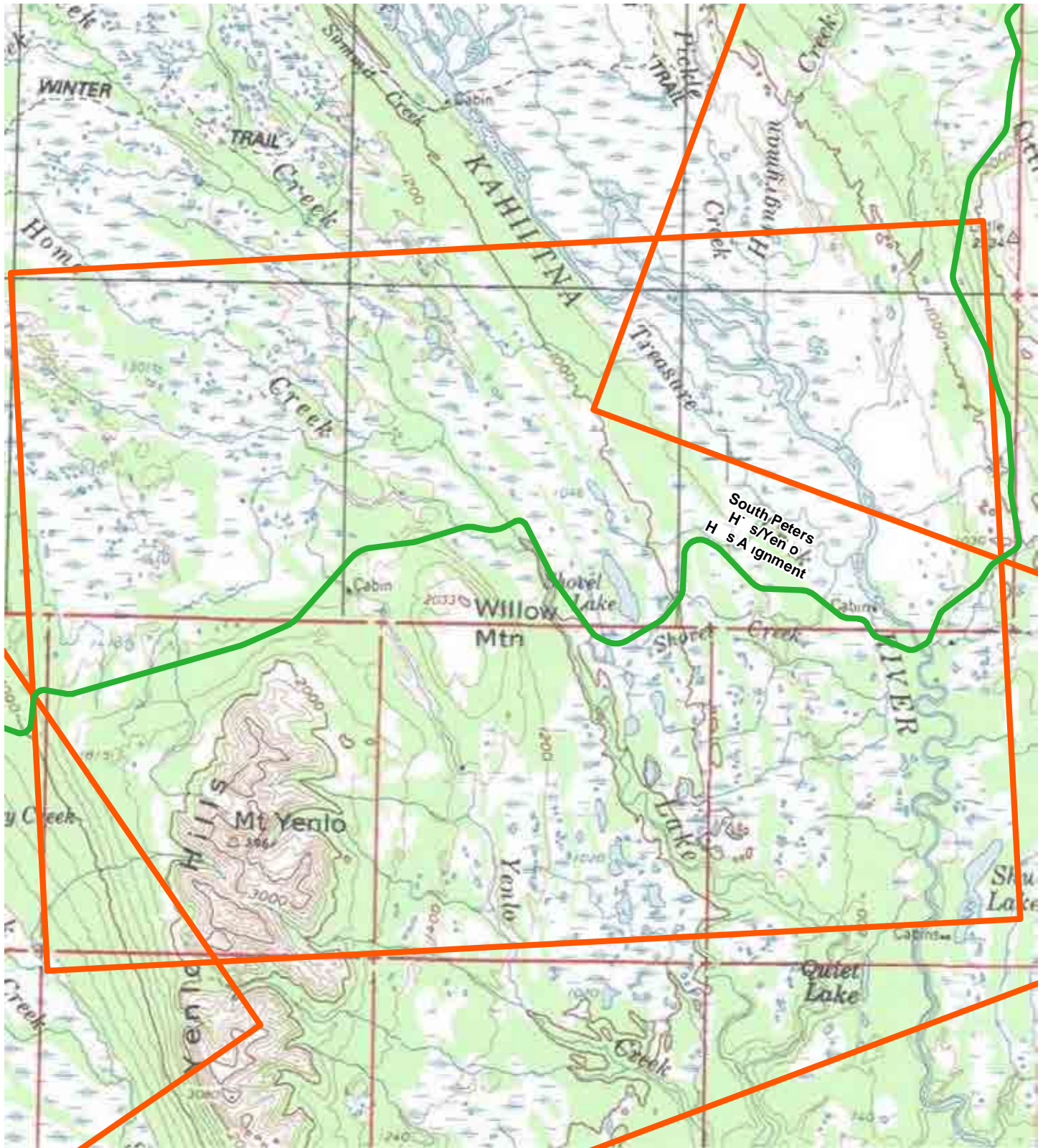
Proposed Corridor Alignments

- Study Area
- Alignment Sections
- Beluga Alignment
- Deshka Alignment
- East Susitna Alignment
- Skwentna Alignment
- Skwentna River Alignment
- South Peters Hills/Yenlo Hills Alignment
- Susitna Crossing Alignment

West Susitna Access to Resource Development

USGS Quad: TALKEETNA A-2 and B-2 Map #: 1





7/18/2013

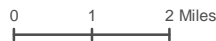
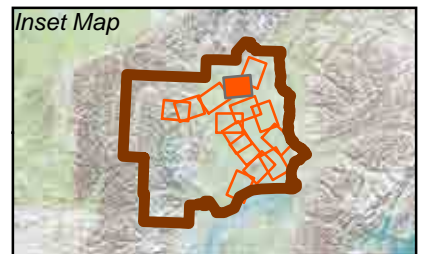
Proposed Corridor Alignments

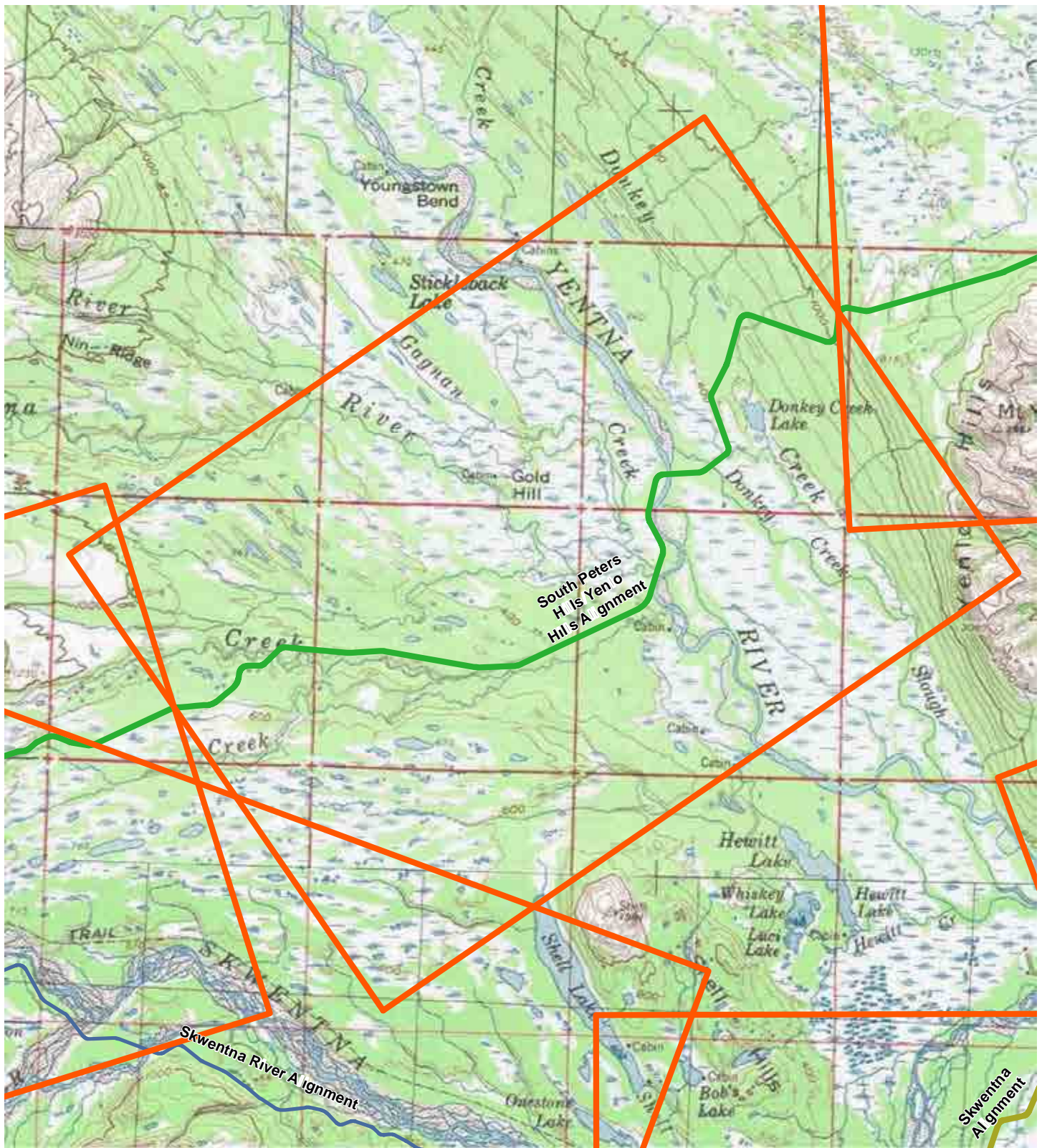
- Study Area
- Alignment Sections
- Beluga Alignment
- Deshka Alignment
- East Susitna Alignment
- Skwentna Alignment
- Skwentna River Alignment
- South Peters Hills/Yenlo Hills Alignment
- Susitna Crossing Alignment

West Susitna Access to Resource Development

USGS Quad: TALKEETNA A-2, A-3, and B-2 Map #: 2

Inset Map



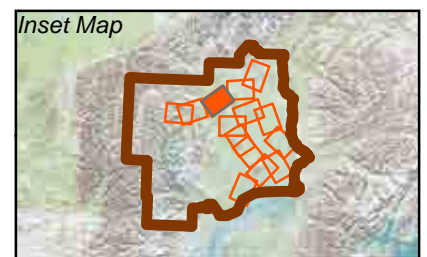


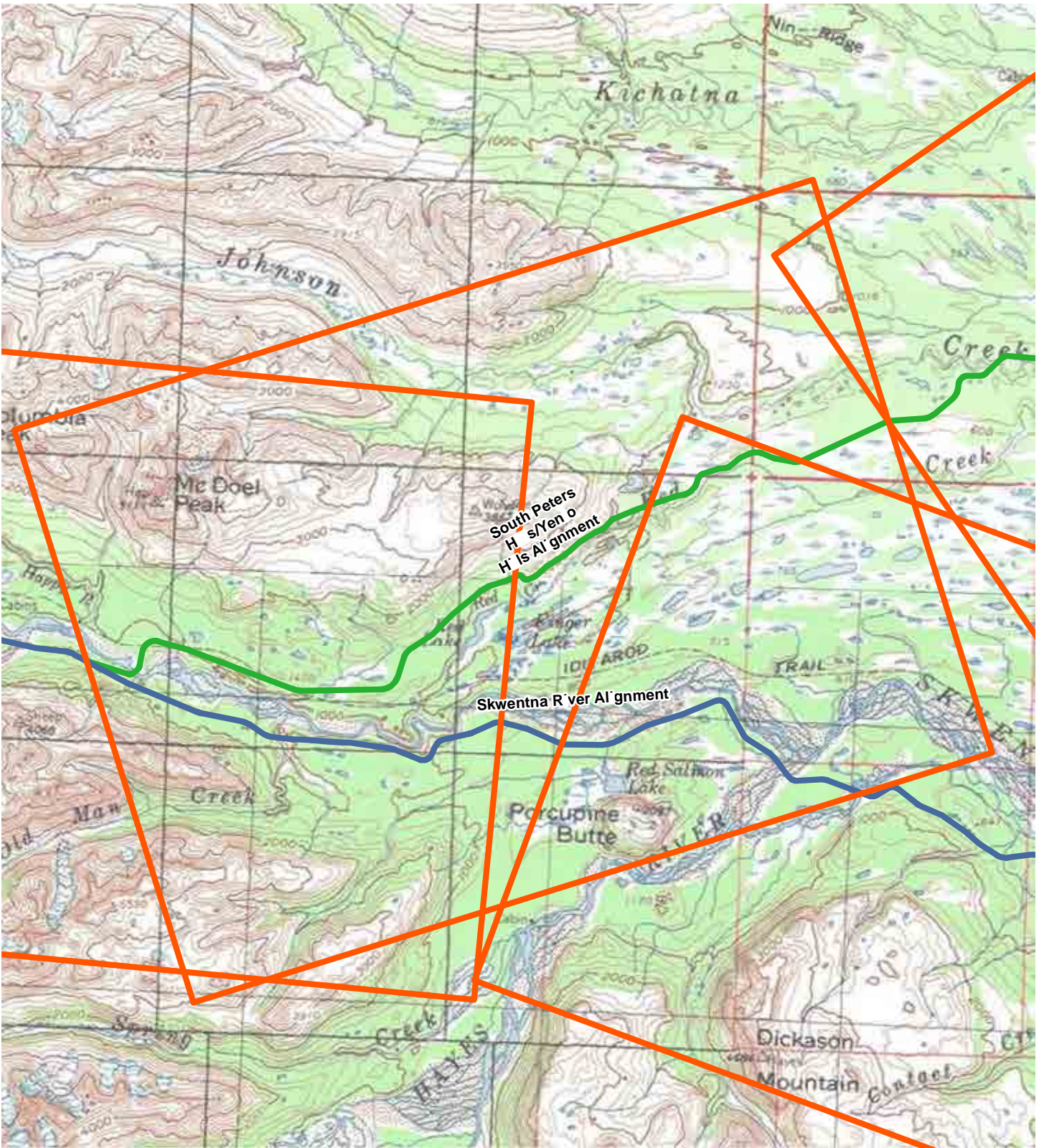
7/18/2013

Proposed Corridor Alignments

- Study Area
- Alignment Sections
- Beluga Alignment
- Deshka Alignment
- East Susitna Alignment
- Skwentna Alignment
- Skwentna River Alignment
- South Peters Hills/Yenlo Hills Alignment
- Susitna Crossing Alignment

West Susitna Access to Resource Development
 USGS Quad: TALKEETNA A-3, A-4, and TYONEK D-5 Map #: 3





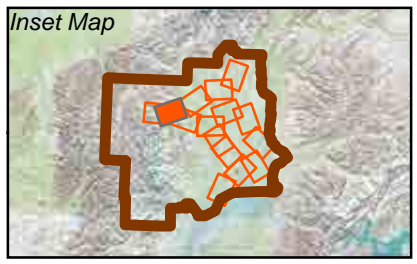
7/18/2013

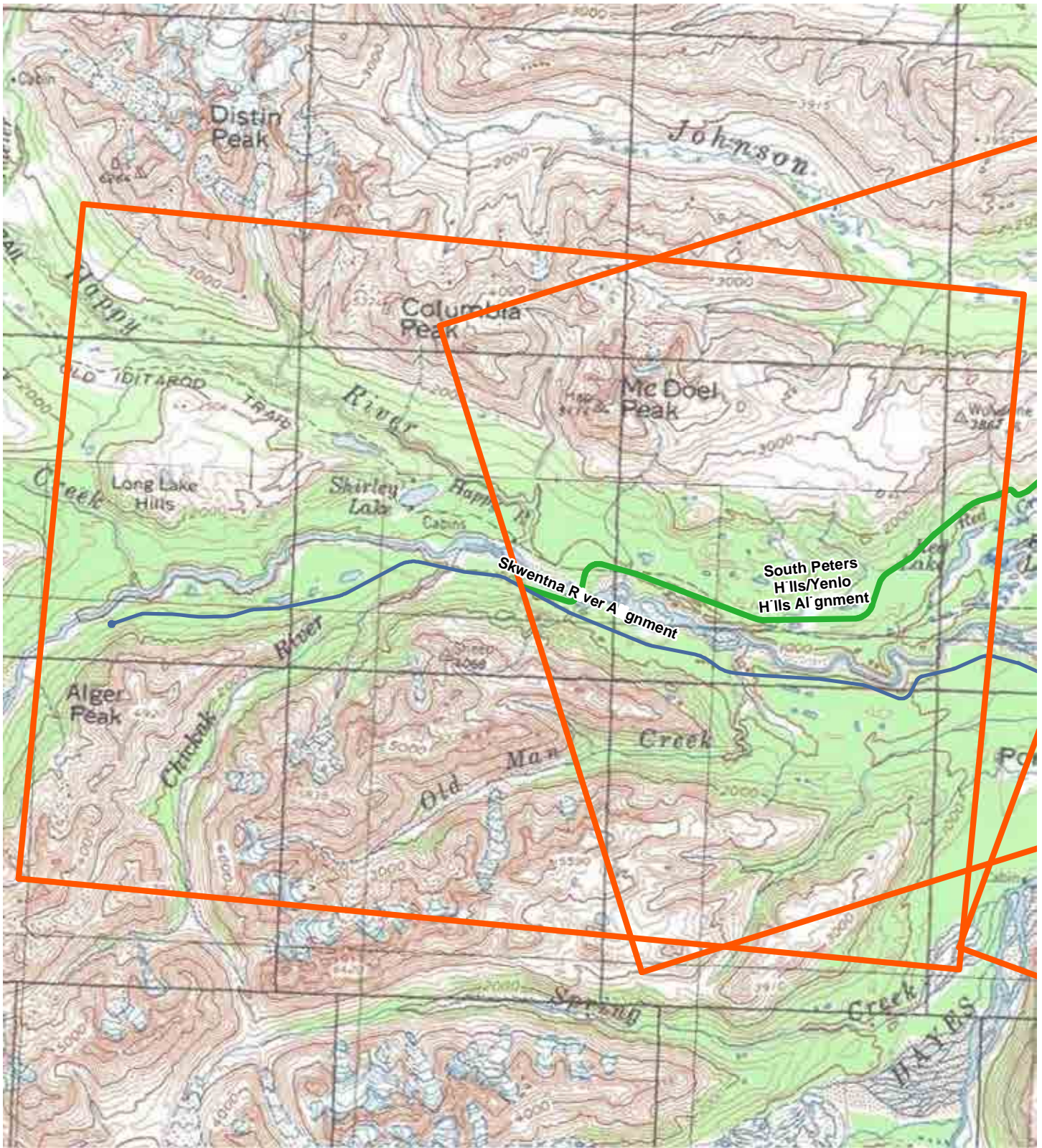
Proposed Corridor Alignments

- Study Area
- Alignment Sections
- Skwentna Alignment
- Skwentna River Alignment
- Beluga Alignment
- South Peters Hills/Yenlo Hills Alignment
- Deshka Alignment
- Susitna Crossing Alignment
- East Susitna Alignment

West Susitna Access to Resource Development

USGS Quad: TALKEETNA A-4, A-5 and TYONEK D-5, D-6, D-7 Map #: 4





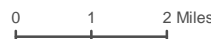
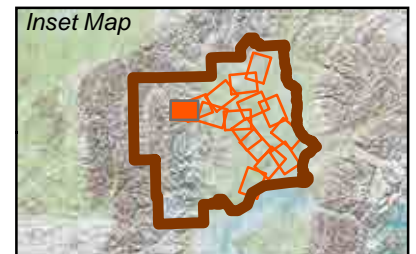
7/18/2013

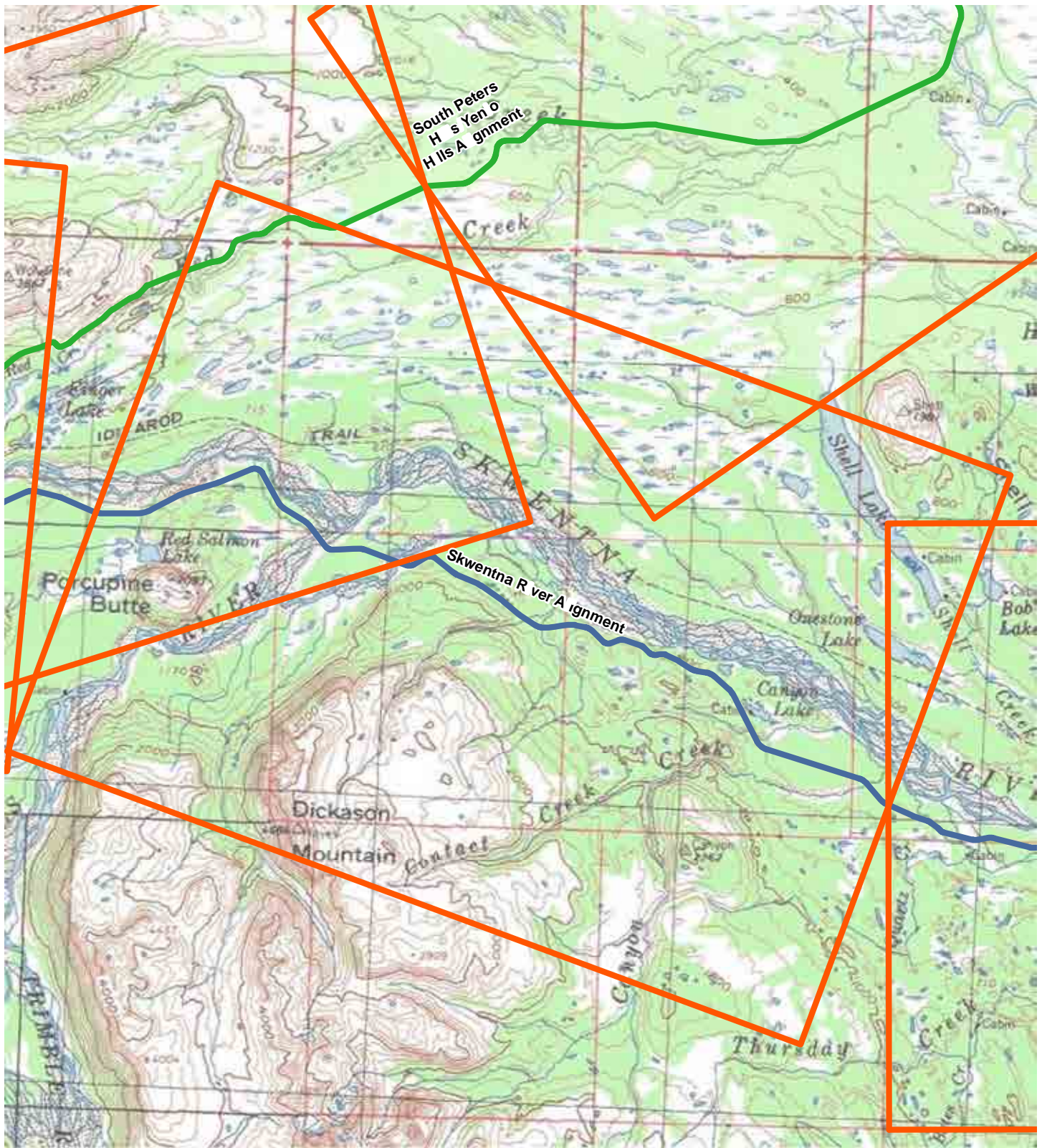
Proposed Corridor Alignments

- Study Area
- Alignment Sections
- Skwentna River Alignment
- South Peters Hills/Yenlo Hills Alignment
- Beluga Alignment
- Deshka Alignment
- East Susitna Alignment
- Susitna Crossing Alignment

West Susitna Access to Resource Development

USGS Quad: TALKKEETNA A-5 and TYONEK D-6, D-7 Map #: 5





7/18/2013

Proposed Corridor Alignments

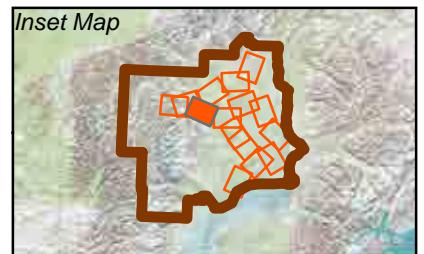
- | | | | |
|--|------------------------|---|--|
|  | Study Area |  | Skwentna Alignment |
|  | Alignment Sections |  | Skwentna River Alignment |
|  | Beluga Alignment |  | South Peters Hills/Yenlo Hills Alignment |
|  | Deshka Alignment |  | Susitna Crossing Alignment |
|  | East Susitna Alignment | | |

West Susitna Access to Resource Development

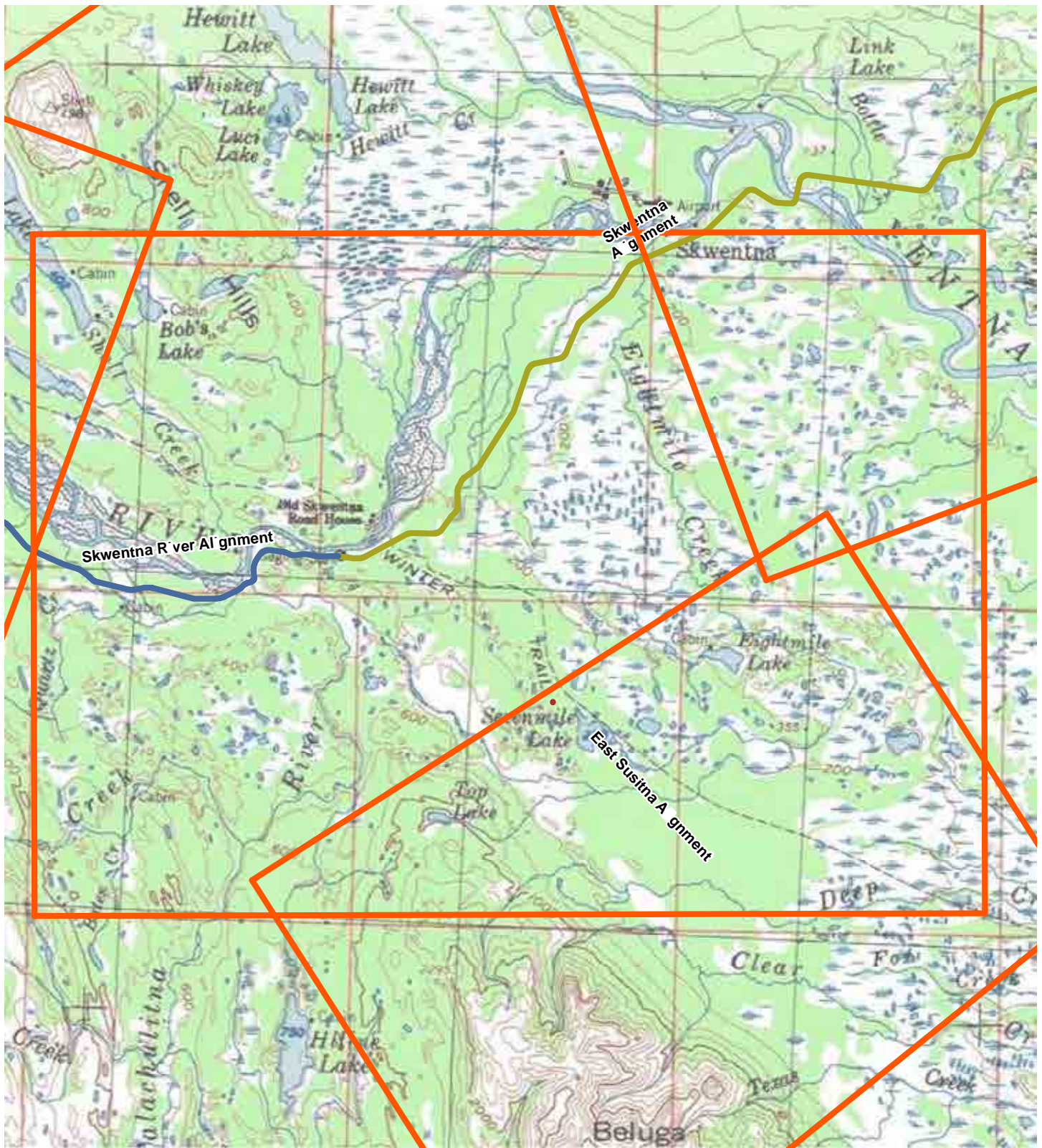
USGS Quad: TALKEETNA A-4 and TYONEK D-5, D-6

Map #: 6

Inset Map



0 1.5 3 Miles



7/18/2013

Proposed Corridor Alignments

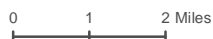
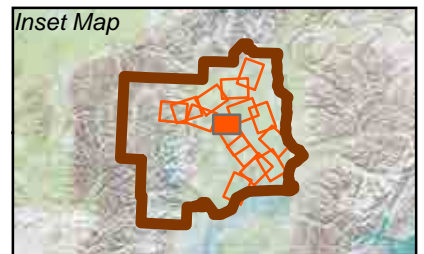
- | | | | |
|--|------------------------|---|--|
|  | Study Area |  | Skwentna Alignment |
|  | Alignment Sections |  | Skwentna River Alignment |
|  | Beluga Alignment |  | South Peters Hills/Yenlo Hills Alignment |
|  | Deshka Alignment |  | Susitna Crossing Alignment |
|  | East Susitna Alignment | | |

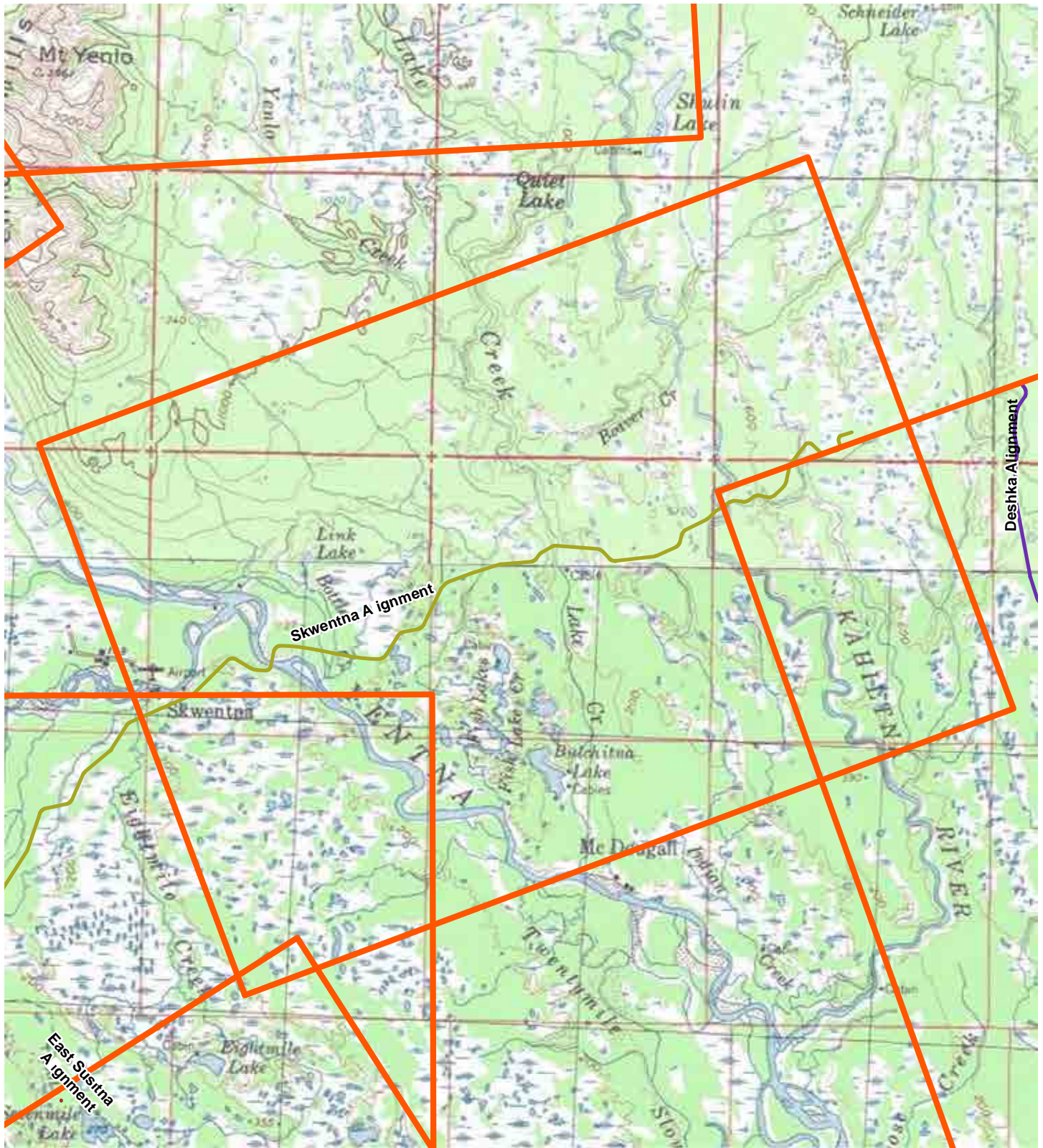
West Susitna Access to Resource Development

USGS Quad: TYONEK D-3, D-4, and D-5

Map #: 7

Inset Map





7/18/2013

Proposed Corridor Alignments

West Susitna Access to Resource Development

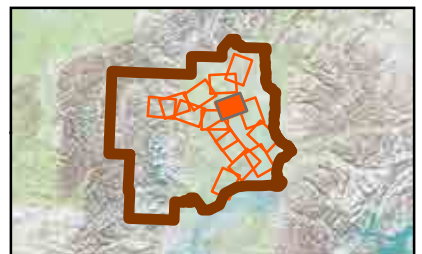
- Study Area
- Alignment Sections
- Beluga Alignment
- Deshka Alignment
- East Susitna Alignment
- Skwentna Alignment
- Skwentna River Alignment
- South Peters Hills/Yenlo Hills Alignment
- Susitna Crossing Alignment

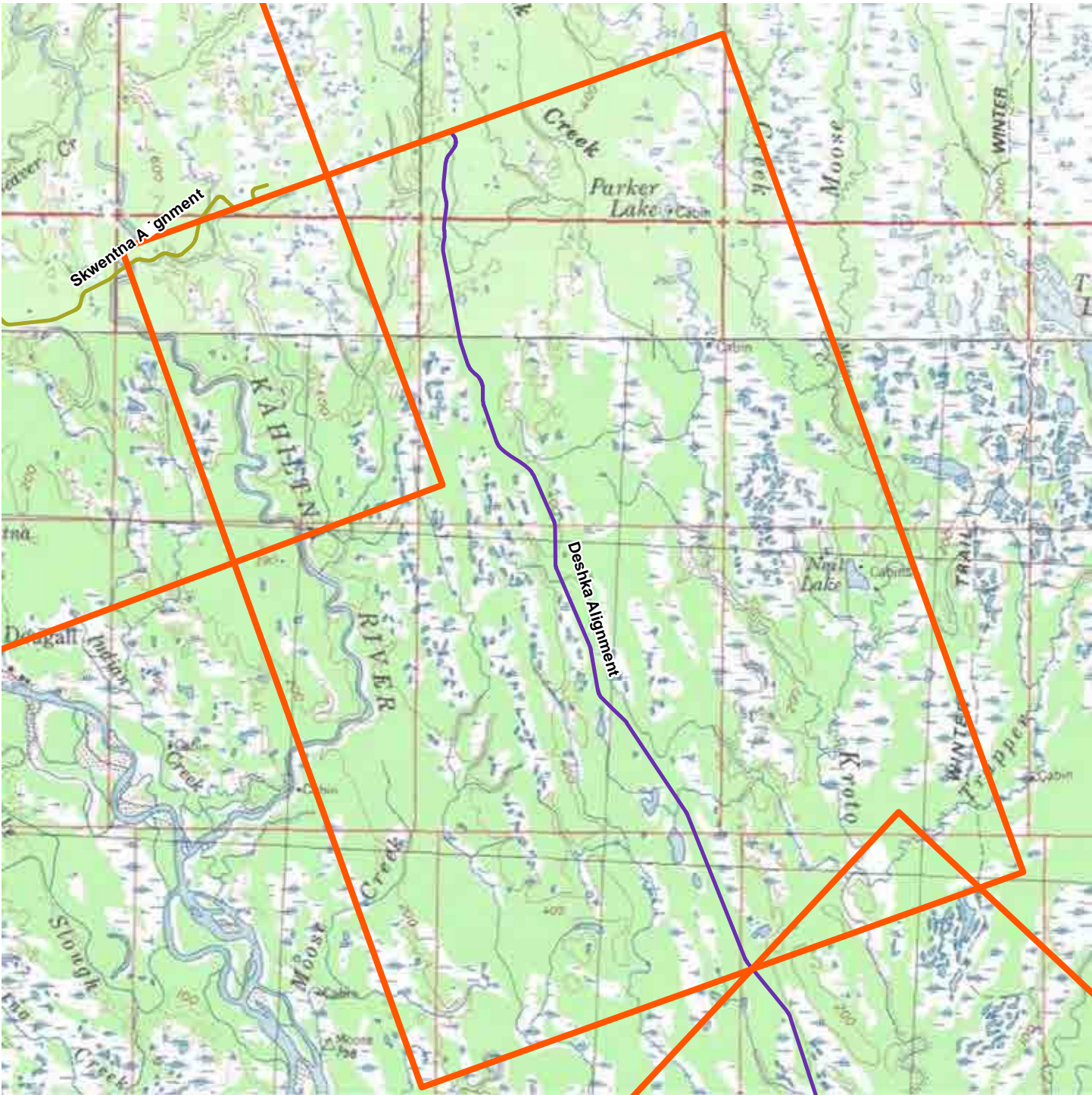
USGS Quad: TALKEETNA A-2, A-3 and TYONEK D-2, D-3, D-4

Map #: 8



0 1.5 3 Miles





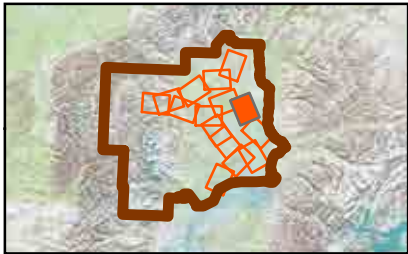
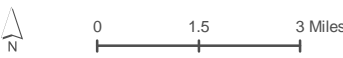
7/18/2013

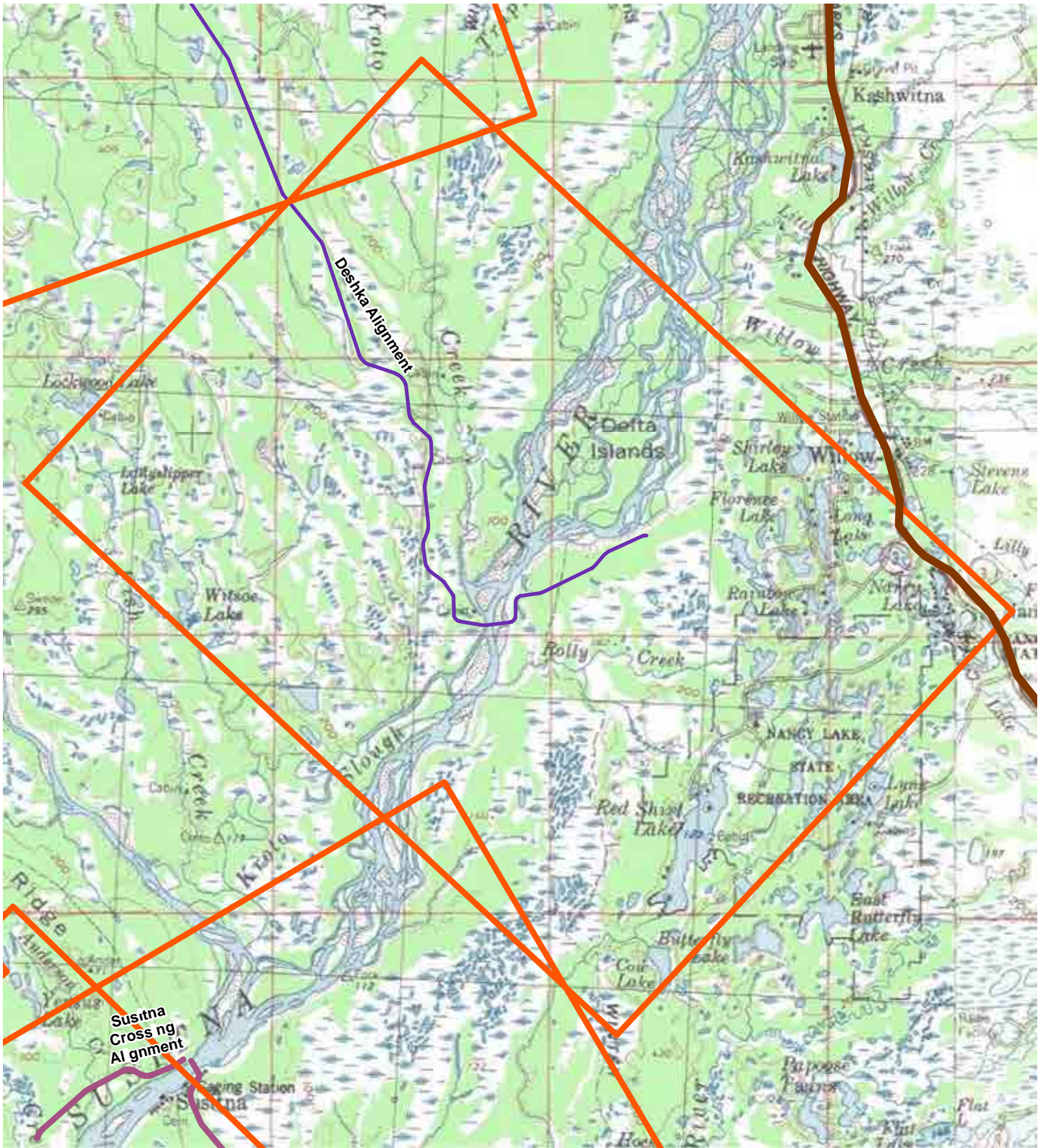
Proposed Corridor Alignments

- Study Area
- Alignment Sections
- Skwentna Alignment
- Skwentna River Alignment
- Beluga Alignment
- Deshka Alignment
- East Susitna Alignment
- South Peters Hills/Yenlo Hills Alignment
- Susitna Crossing Alignment

West Susitna Access to Resource Development

USGS Quad: TALKEETNA A-2 and TYONEK D-1,D-2,D-3 Map #: 9





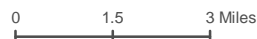
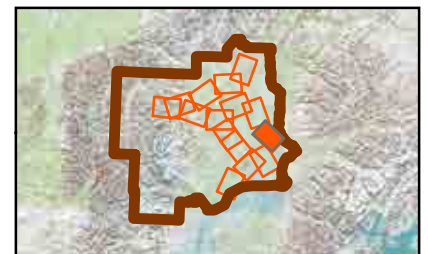
Proposed Corridor Alignments

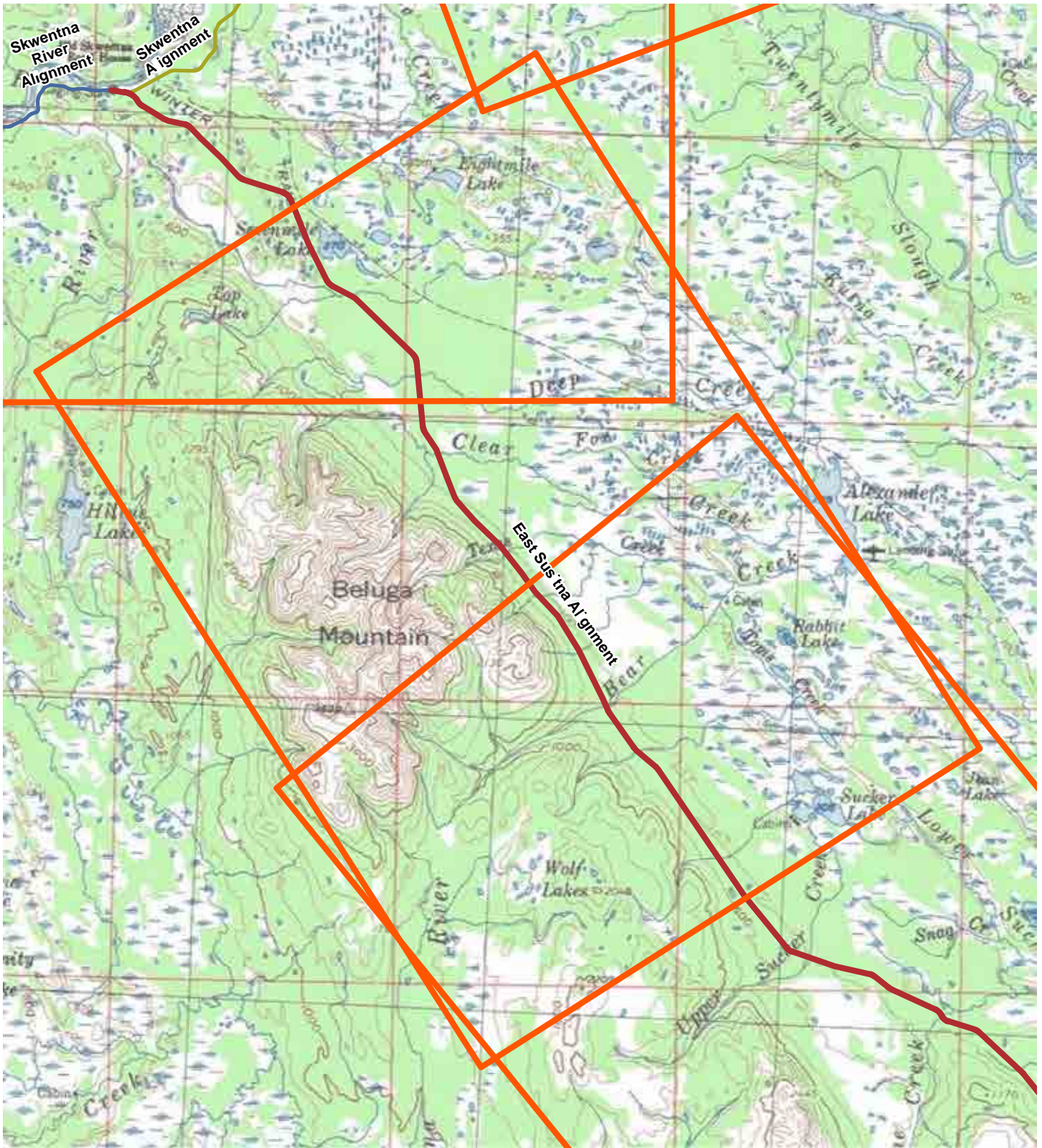
-  Study Area
-  Alignment Sections
-  Skwentna River Alignment
-  South Peters Hills/Yenlo Hills Alignment
-  Desha Alignment
-  Susitna Crossing Alignment
-  East Susitna Alignment
-  Skwentna Alignment

West Susitna Access to Resource Development

USGS Quad: TYONEK C-1, C-2, D-1, and D-2

Map #: 10





7/18/2013

Proposed Corridor Alignments

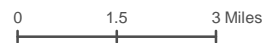
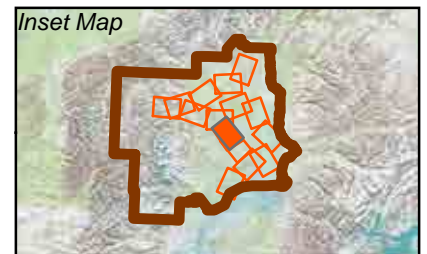
- Study Area
- Skwentna Alignment
- Skwentna River Alignment
- Beluga Alignment
- Deshka Alignment
- Susitna Crossing Alignment
- East Susitna Alignment
- South Peters Hills/Yenlo Hills Alignment

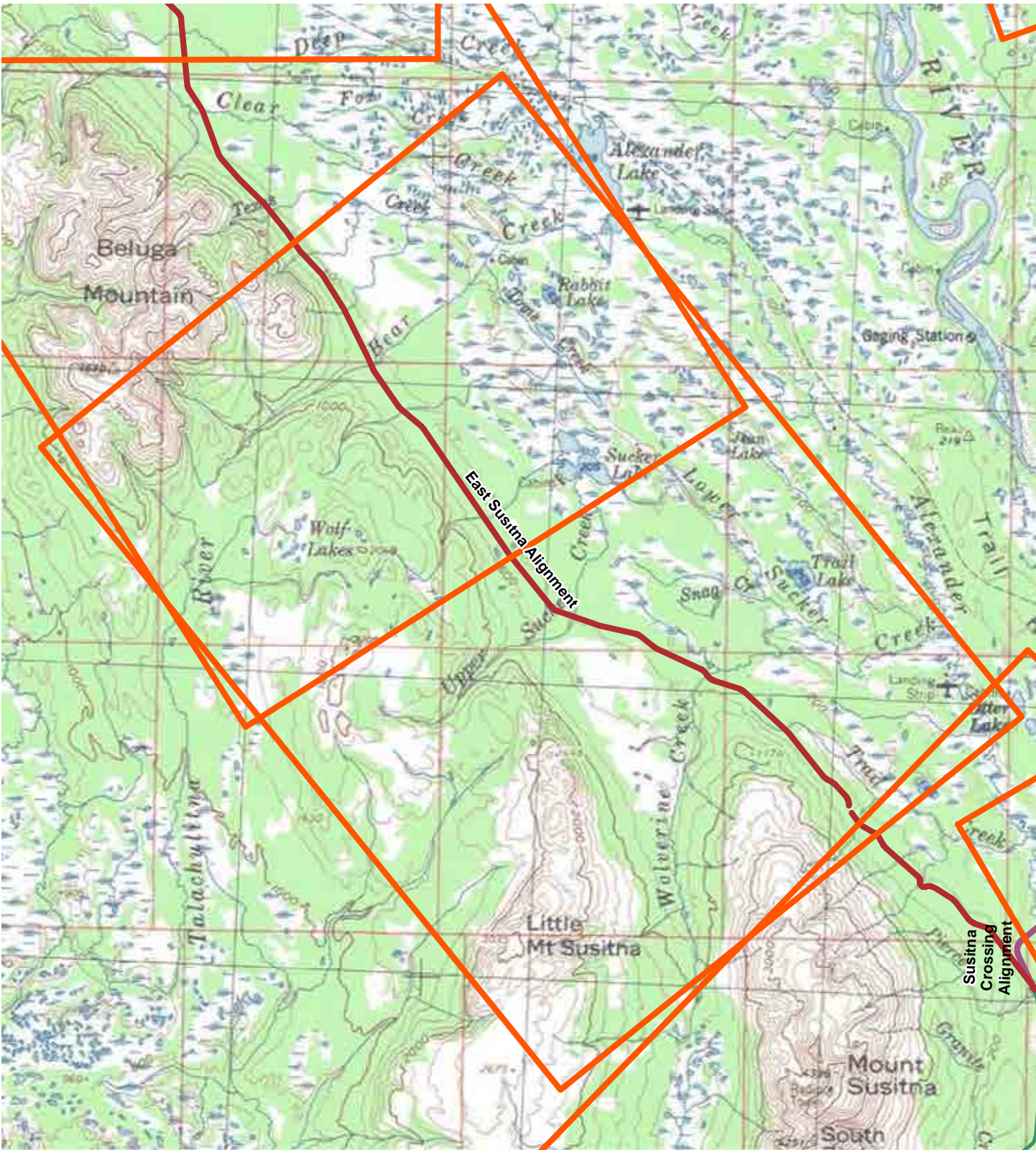
West Susitna Access to Resource Development

USGS Quad: TYONEK C-3, C-4, D-3, and D-4

Map #: 11

Inset Map



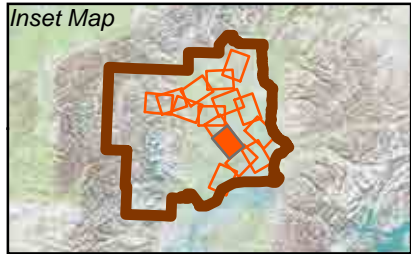


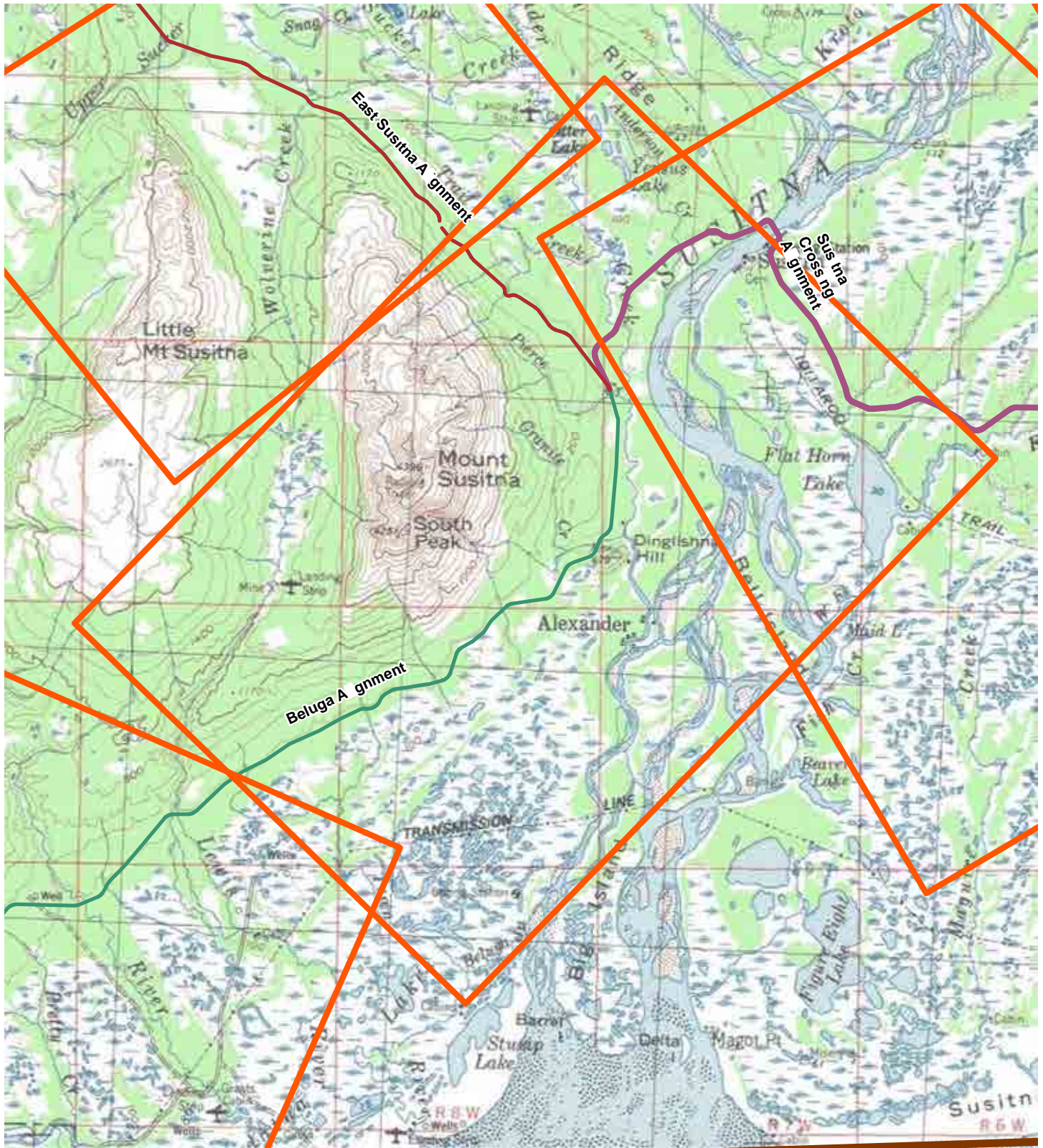
7/18/2013

Proposed Corridor Alignments

- Study Area
- Alignment Sections
- Beluga Alignment
- Deshka Alignment
- East Susitna Alignment
- Skwentna Alignment
- Skwentna River Alignment
- South Peters Hills/Yenlo Hills Alignment
- Susitna Crossing Alignment

West Susitna Access to Resource Development
 USGS Quad: TYONEK B-2, C-2, C-3, and D-3 Map #: 12





7/18/2013

Proposed Corridor Alignments

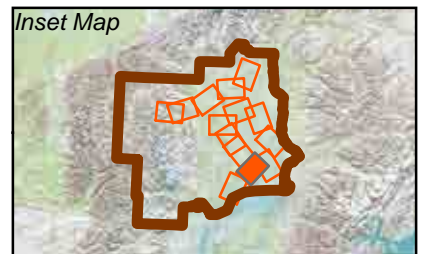
- Study Area
- Alignment Sections
- Beluga Alignment
- Deshka Alignment
- East Susitna Alignment
- Skwentna Alignment
- Skwentna River Alignment
- South Peters Hills/Yenlo Hills Alignment
- Susitna Crossing Alignment

West Susitna Access to Resource Development

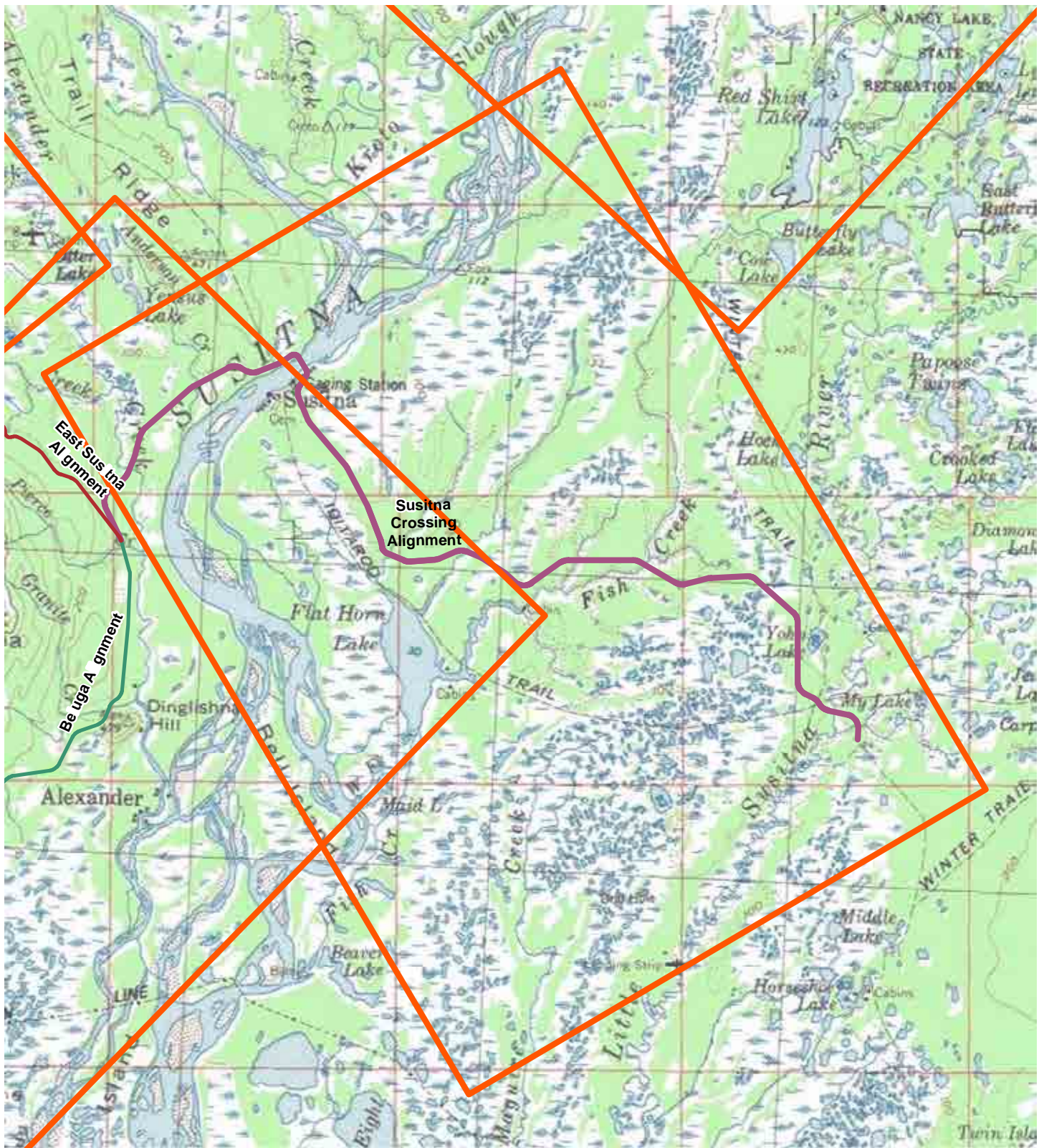
USGS Quad: TYONEK B-2, B-3, C-2, and C-3

Map #: 13

Inset Map



0 1.5 3 Miles



7/18/2013

Proposed Corridor Alignments

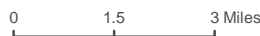
- Study Area
- Alignment Sections
- Beluga Alignment
- Deshka Alignment
- East Susitna Alignment
- Skwentna Alignment
- Skwentna River Alignment
- South Peters Hills/Yenlo Hills Alignment
- Susitna Crossing Alignment

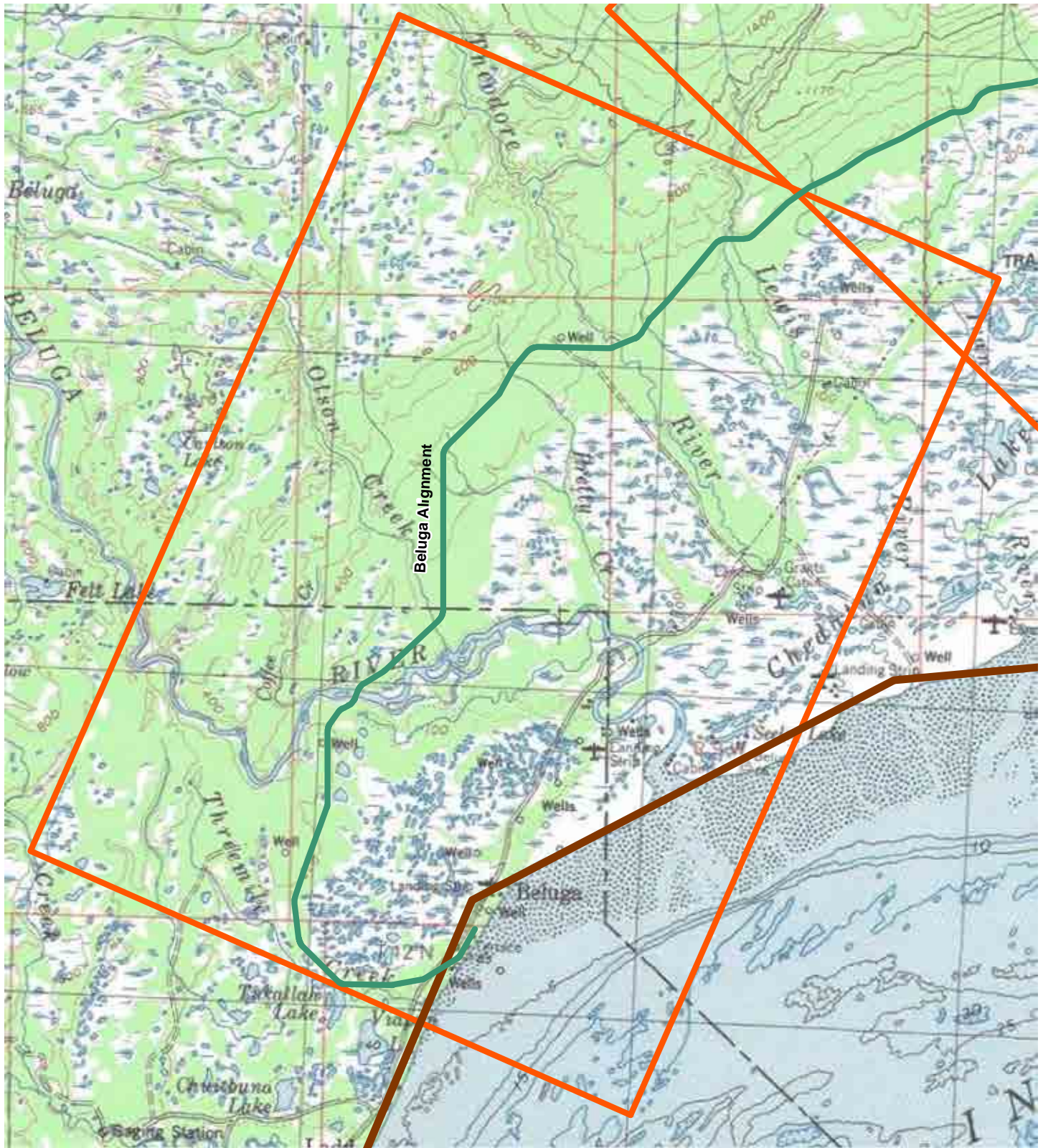
West Susitna Access to Resource Development

USGS Quad: TYONEK B-1, B-2, C-1, and C-2

Map #: 14

Inset Map





7/18/2013

Proposed Corridor Alignments

- Study Area
- Alignment Sections
- Beluga Alignment
- Deshka Alignment
- East Susitna Alignment
- Skwentna Alignment
- Skwentna River Alignment
- South Peters Hills/Yenlo Hills Alignment
- Susitna Crossing Alignment

West Susitna Access to Resource Development

USGS Quad: TYONEKA A-3, A-4, and B-3 Map #: 15

