

Pilots: When repositioning on the East Ramp give Ground Control a courtesy call on 121.9

Daily and Monthly Aircraft Transient Parking Available!
Contact the Airport Permit Office for Affordable Monthly Rates.
474-2500



Created in cooperation with the Fairbanks General Aviation Association

FAI East Ramp Orientation & Safety Information

Welcome to the Fairbanks East Ramp:
The East Ramp is an Aircraft Operations Area.
Access is limited to east side tenants, transient pilots, escorted guests and other persons authorized by Airport Management.

For information regarding access to this area call 474-2530



Get a copy of this info on your mobile device!



@FairbanksInternationalAirport



@Fly_Fairbanks

FAA Tower Clearance is Required Before Crossing

B 4-22

CONTROLLED ACCESS AREA
DO NOT PASS THIS POINT WITHOUT FAA TOWER CLEARANCE

Fairbanks Airport
Speed Limit
MAXIMUM
20 MPH

SPEED LIMIT
20

YIELD TO AIRCRAFT

Keep in mind that an aircraft may be behind you

REPORT HAZARDOUS WILDLIFE TO
AIRPORT OPERATIONS
474-2530

KEEP DOGS AND AIRCRAFT SAFE!



AIRCRAFT AND LOOSE DOGS ARE A DEADLY COMBINATION

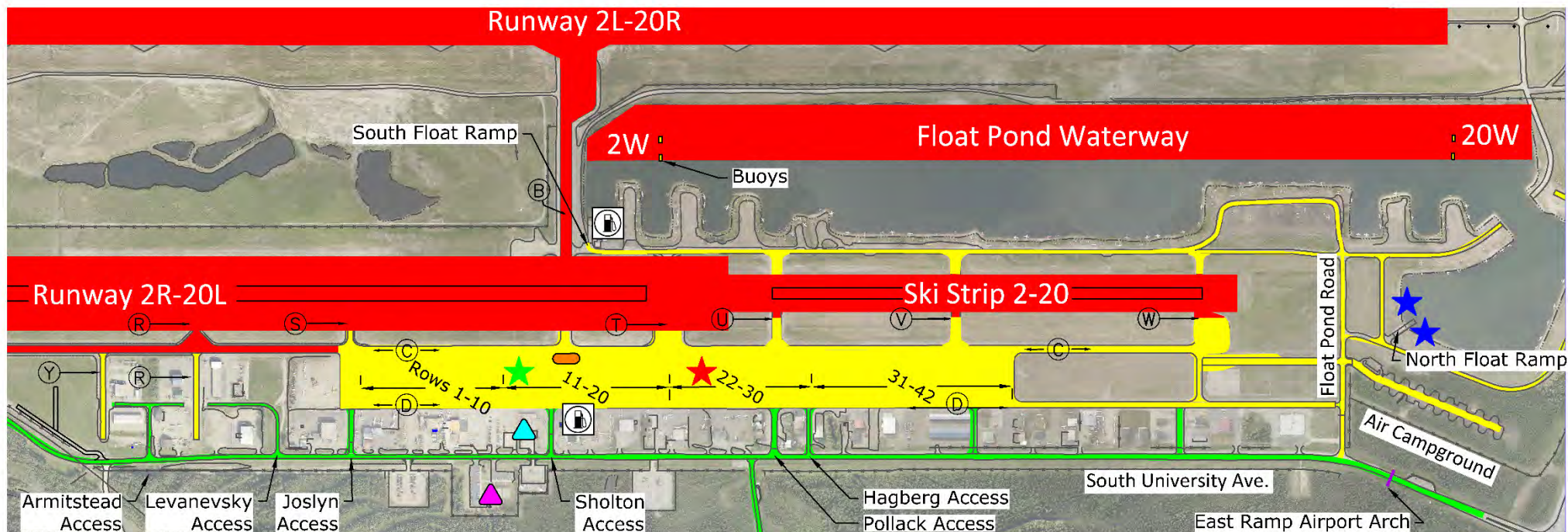
DOGS MUST BE RESTRAINED AT ALL TIMES

REMOVE AND DISPOSE OF ALL WASTE IN TRASH RECEPTACLES

REPORT ANY LOOSE ANIMALS TO THE AIRPORT AT (907) 474-2530

KNOW BEFORE YOU GO!

For Additional Information: Contact FAI Operations 474-2552



Legend

- **Tower Clearance Required** – Any access to the surfaces depicted in RED requires clearance from the tower, (Aircraft Use Only). These surfaces are marked with red hold signs and yellow hold lines painted across access points. Do not cross without tower clearance. Entering these areas without clearance will result in severe penalties and could cause an aircraft accident.
 - **Aircraft Operations Area.** Use extreme caution in areas depicted in Yellow. Aircraft always have the right of way and may be behind you. Always take the most direct route to your destination. Maximum Speed Limit is 20 mph. Taxiway Delta is NOT to be used as a vehicle roadway. Except for short distances, use University Avenue.
 - **Public Access Roads** are depicted in Green.
- Aircraft Fuel (Self Service)
 - FAA Control Tower
 - FAA Flight Service Station
 - Taxiway
 - Island with Elevated Lights
 - Transient Aircraft Parking
 - Non-Electrical (Rows 11-14)
 - Electrical South Side of Row 23
 - Float Pond (Water Spaces: T1-T4
Land Spaces: 160-163)

KEEP AN EYE ON FAI

Report Suspicious or Unauthorized Activity

(907) 474-2530 or 911