

Ted Stevens Anchorage International Airport

“Yesterday – Today - Tomorrow”

January 28, 2008



Ted Stevens
Anchorage
International Airport

1938



Lake Hood 1946



**All Photos Courtesy
Alaska Aviation Heritage Museum
Steve McCutcheon, Photographer**

1950



Airport Dedication 1953



50th ANNIVERSARY OF POWERED FLIGHT
PROGRESS
SECURITY

**ALASKA SALUTES
50th ANNIVERSARY OF POWERED FLIGHT
AND THE DEDICATION OF
ANCHORAGE INTERNATIONAL AIRPORT**

SPONSORED BY
ALASKA AIRLINES
CORDOVA AIRLINES
NORTHWESTERN CONSOLIDATED
NORTHWEST AIRLINES
PACIFIC NORTHWEST
REEVE AIRWAYS





CORDOVA AIRLINES

N20889

ANCHORAGE INTERNATIONAL AIRPORT

PASSENGER AIRRAMP

6

July 1958



1958



**Northern Consolidated F-27
1959**



← PASSENGER SERVICE COUNTER

Downstairs

To
BAGGAGE CLAIM
SERVICE COUNTER
LIMOUSINES





CLOUD HOPPERS
Cocktail Lounge

COFFEE

LOADING GATES

REST ROOMS

AIR TRIP INSURANCE

AVIS

INFORMATION

AVIS



34567



Fleet Air Transport

N3705V

ALASKA

PNA

PACIFIC NORTHERN

PNA

Mo

1961



PACIFIC NORTHERN
PNA
PNA

NORTHWEST

Old Tower & SAS 1961



1962



ANC





Ted Stevens
Anchorage
International Airport



Ted Stevens Anchorage International Airport



Ted Stevens Anchorage International Airport Goals

Provide More Value to Our Customers
Reduce Costs and Increase Productivity

- Safety/Security
- Customer Satisfaction
- Employee Satisfaction
- Efficiency/Effectiveness
- Manage the Money
- Provide Quality Service
- Environmental Stewardship

#1 Airport in the U.S. for landed weight of cargo aircraft

#1 Airport for excellent service '05 & '07

#3 Airport in the world for cargo throughput



Ted Stevens
Anchorage
International Airport

Busy Passenger Airport



Busiest Floatplane Base In World



Lakes Hood & Spenard





Ted Stevens
Anchorage
International Airport

International Cargo Airport



Strategic Location



*9.5 hours from
90% of the World*

DISTANCES FROM ANCHORAGE

City	Nautical Miles
Singapore	5,792
Hong Kong	4,415
Frankfurt	4,064
London	3,902
Moscow	3,791
Miami	3,479
Beijing	3,442
Seoul	3,286
Mexico City	3,284
Tokyo	2,983
New York	2,941
Chicago	2,473
Honolulu	2,413
Los Angeles	2,037

ANC Advantage

Cargo Carriers Increase Revenue

SHA - ANC - OAK
Distance = 6,157 NM
Payload = 110,000 KG

SHA - OAK
Distance = 6,013 NM
Payload = 65,000 KG



SHA - ANC - OAK Revenue (\$2.00/kg)	\$220,000
SHA - OAK Revenue	\$130,000
Increased Revenue with ANC stop	\$90,000

China Market Overview

- 2000 - 15 landings per week
- 2006 - 198 landings per week
- 2007 - 260 landings per week
- Nearly 35% of total international cargo traffic at ANC derived from China market

Cargo Carriers serving ANC

→ U.S. Carriers

- FedEx
- UPS
- Northwest Air Cargo
- Polar Air Cargo

→ Foreign Carriers

- Air China
- China Southern
- China Cargo
- Yangtze River Express
- Shanghai Air Cargo
- Qantas
- Cathay Pacific
- Transmile Air

2005 Cargo Landed Weight

(Billions of Pounds)

Rank	Airport	Total Cargo	% Change
1	ANCHORAGE (ANC)	20.7	5.28
2	MEMPHIS (MEM)	18.6	5.15
3	LOUISVILLE (SDF)	9.1	4.62
4	MIAMI (MIA)	7.1	3.71
5	LOS ANGELES (LAX)	5.8	(4.43)
6	JOHN F KENNEDY (JFK)	5.6	(3.00)
7	INDIANAPOLIS (IND)	5.0	9.98
8	CHICAGO (ORD)	4.8	2.25
9	NEWARK (EWR)	3.7	6.00
10	OAKLAND (OAK)	3.5	5.56

2006 ACI Cargo Traffic Stats

(Metric Tons)

Rank	Airport	Total Cargo	% Change
1	MEMPHIS (MEM)	3 692 205	2.6
2	HONG KONG (HKG)	3 608 789	5.1
3	ANCHORAGE (ANC)	2 803 792	5.9
4	SEOUL (ICN)	2 336 571	8.7
5	TOKYO (NRT)	2 280 026	(0.5)
6	SHANGHAI (PVG)	2 159 321	16.3
7	FRANKFURT (FRA)	2 127 797	8.4
8	LOUISVILLE (SDF)	1 982 985	9.7
9	SINGAPORE (SIN)	1 931 881	4.2
10	LOS ANGELES (LAX)	1 907 173	(1.1)

Infrastructure Development



Public Infrastructure Investment

2007-2009

Concourse A & B Remodel	\$207,000,000
Airfield Improvements	\$ 75,907,000
Terminal Improvements	\$17,963,000
Roads and Utilities	\$24,300,000
Environmental Compliance	\$13,813,000
Operations & Facilities Center	\$46,000,000
Equipment	\$16,355,000
Safety and Security	\$22,371,000
General Aviation	\$3,300,000
Noise Compatibility Program	\$11,400,000
Other	<u>\$16,046,000</u>
Total	\$454,455,000

CONSTRUCTION AREA KEEP OUT

Thank You, PCL



EYE
PROTECTION,
HARD HAT
& FOOT PROTECTION
AREA

DANGER



EYE PROTECTION, HARD HATS
AND SAFETY FOOTWEAR
MUST BE WORN
ON THIS PROJECT





B Concourse
is Closed

DANGER
Circumstances
Under
Penalty
Federal Law
No
Hazardous
Material
Classification
Required

EXIT

EXIT



STOP RESTRICTED AREA
NO UNAUTHORIZED PERSONS
BEYOND THIS POINT
PCL

DANGER
EYE PROTECTION
HARD HAT
& FACE PROTECTION
AREA
EYE PROTECTION HARD HATS
& SAFETY FOOTWEAR
MUST BE WORN
IN THIS PROJECT
PCL











CAUTION - EXPOSED

CAUTION - EXPOSED

DANGER DO NOT ENTER

CAUTION - EXPOSED



Baggage Claim 4
Northwest/KLM



Keep Children
Away From
Baggage Belts

Northwest
Baggage
Storage
Office is at
Bag Claim 8
←



THE WHOLE
SUBJECT TO
ELECTRONIC
SURVEILLANCE









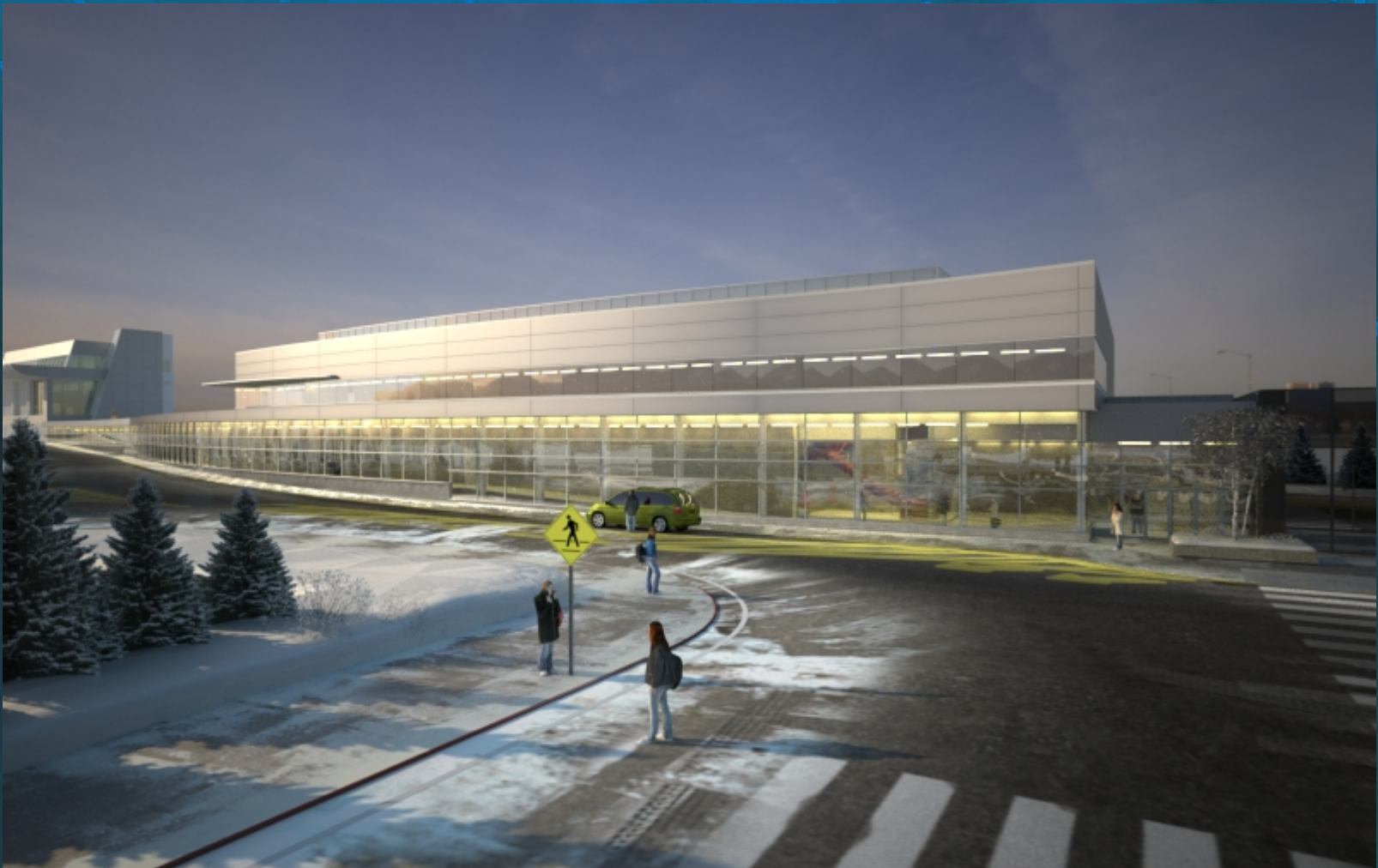




Ticket Lobby



Terminal Connector And Facilities/Communication Center



Show Me The Money
Managing The Money

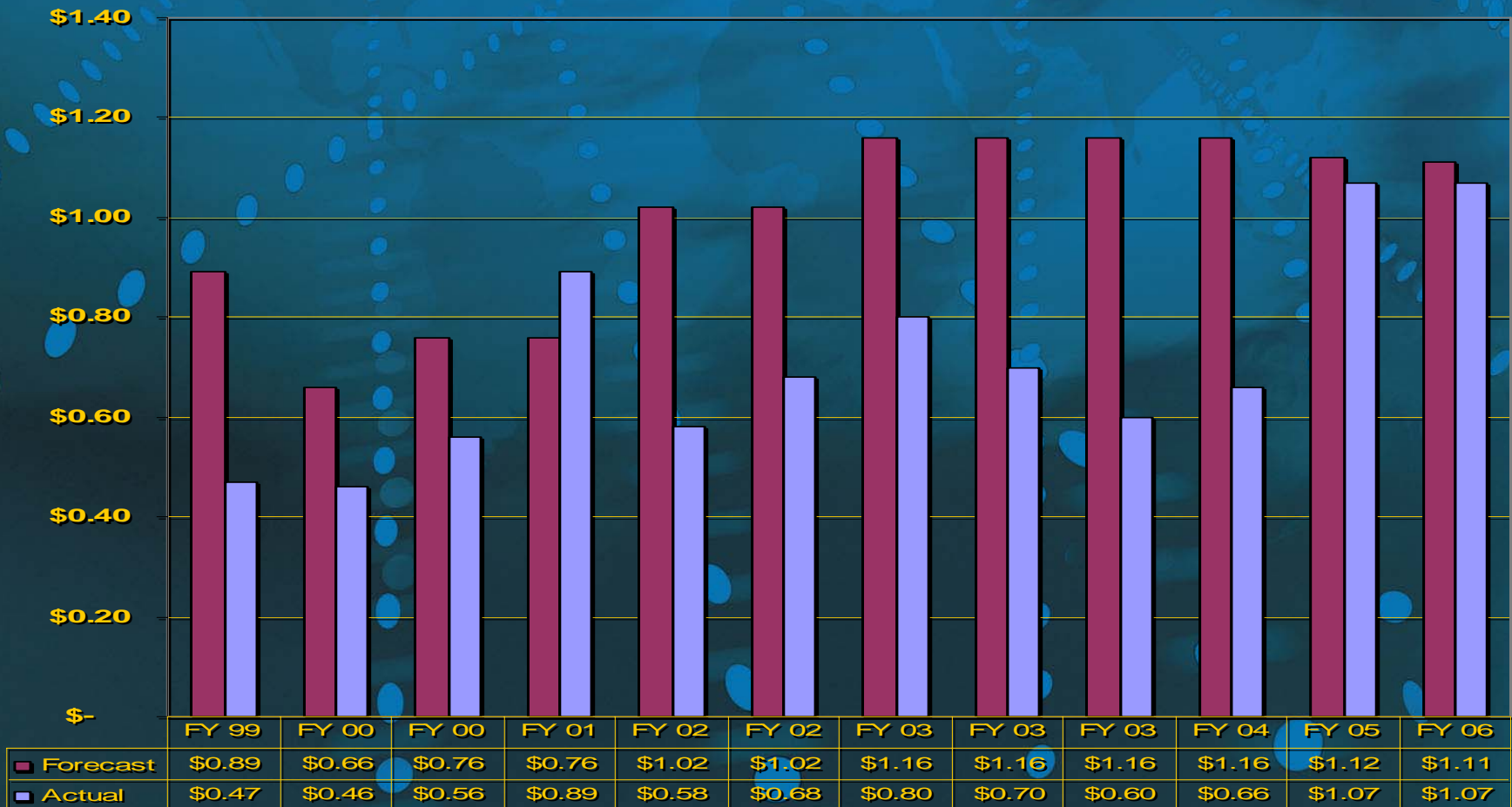
NO State General Funds Used

Multi-Funding
Airport Improvement Programs
with FAA issued Letter of Intent (LOI)

LOI 1	Approved 1998	\$48,050,000
LOI 2	Approved 2003	\$60,487,000

ANC Landing Fees Actual vs. Forecast

(Based on 1999 Bond Sale)

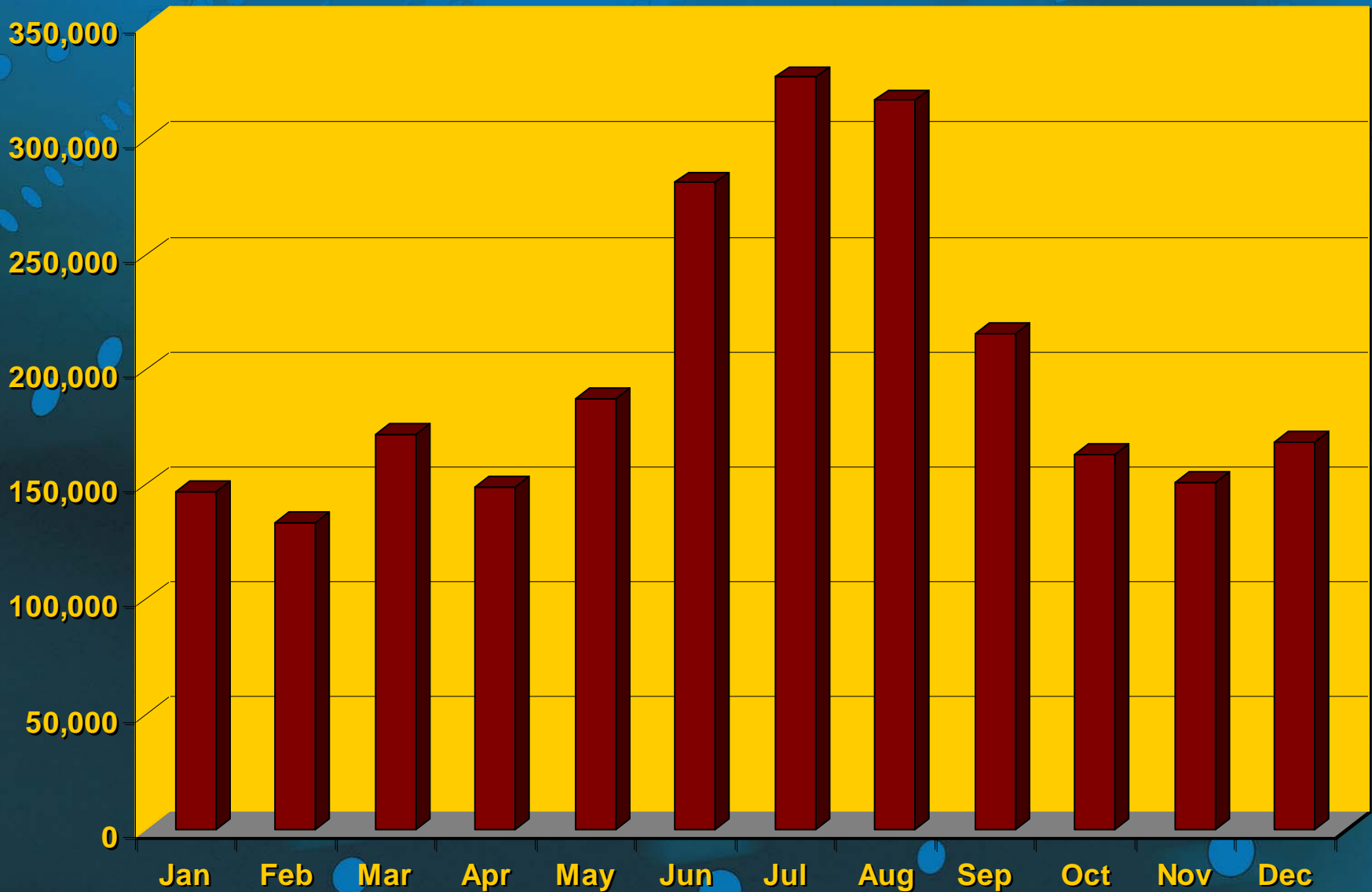


Forecast **Actual**

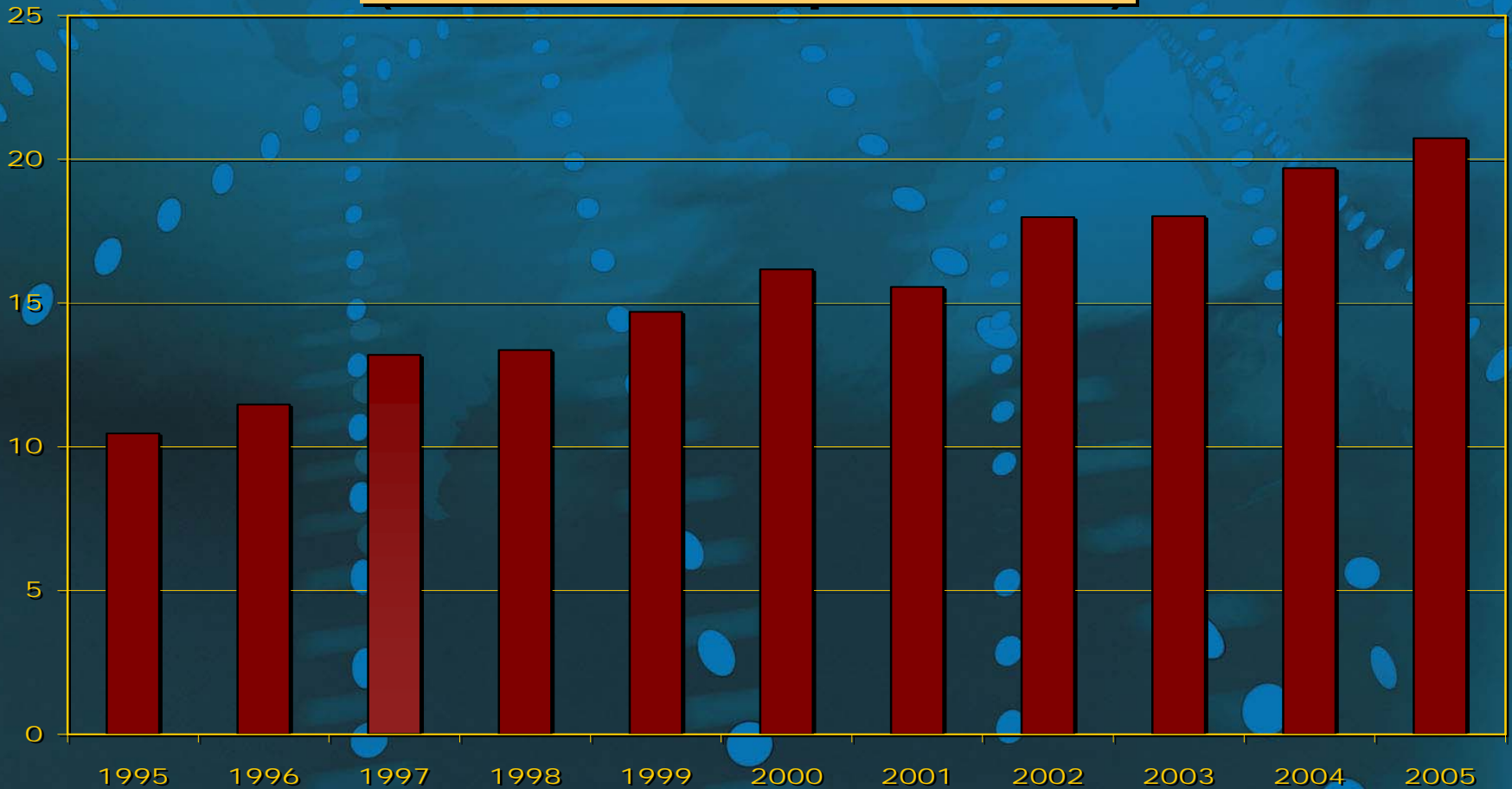
Recent Bond Rating Upgrades

- **Fitch - (AA-) stable (very high quality, not particularly vulnerable)**
- **Moody's – (Aa3) stable (very strong)**
- **S & P – (A+) stable (strong capacity to meet financial obligations)**

2006 Passenger Enplanements



Air Service Development Cargo Aircraft Landed Weight (billions of pounds)



Domestic Landing Fee Survey

2007

	747-400F
Anchorage (\$1.52)	\$ 1,266.16
Chicago	\$ 2,264.93
Dallas	\$ 4,123.35
Denver	\$ 2,829.70
Detroit	\$ 2,807.21
Houston	\$ 2,657.27
Indianapolis	\$ 1,449.42
Los Angeles	\$ 2,099.16
Miami	\$ 2,307.41
New York (EWR)	\$ 4,456.55
New York (JFK)	\$ 4,456.55
Portland	\$ 2,340.73
San Francisco	\$ 2,676.43
Seattle	\$ 2,024.19

International Landing Fee Survey 2007

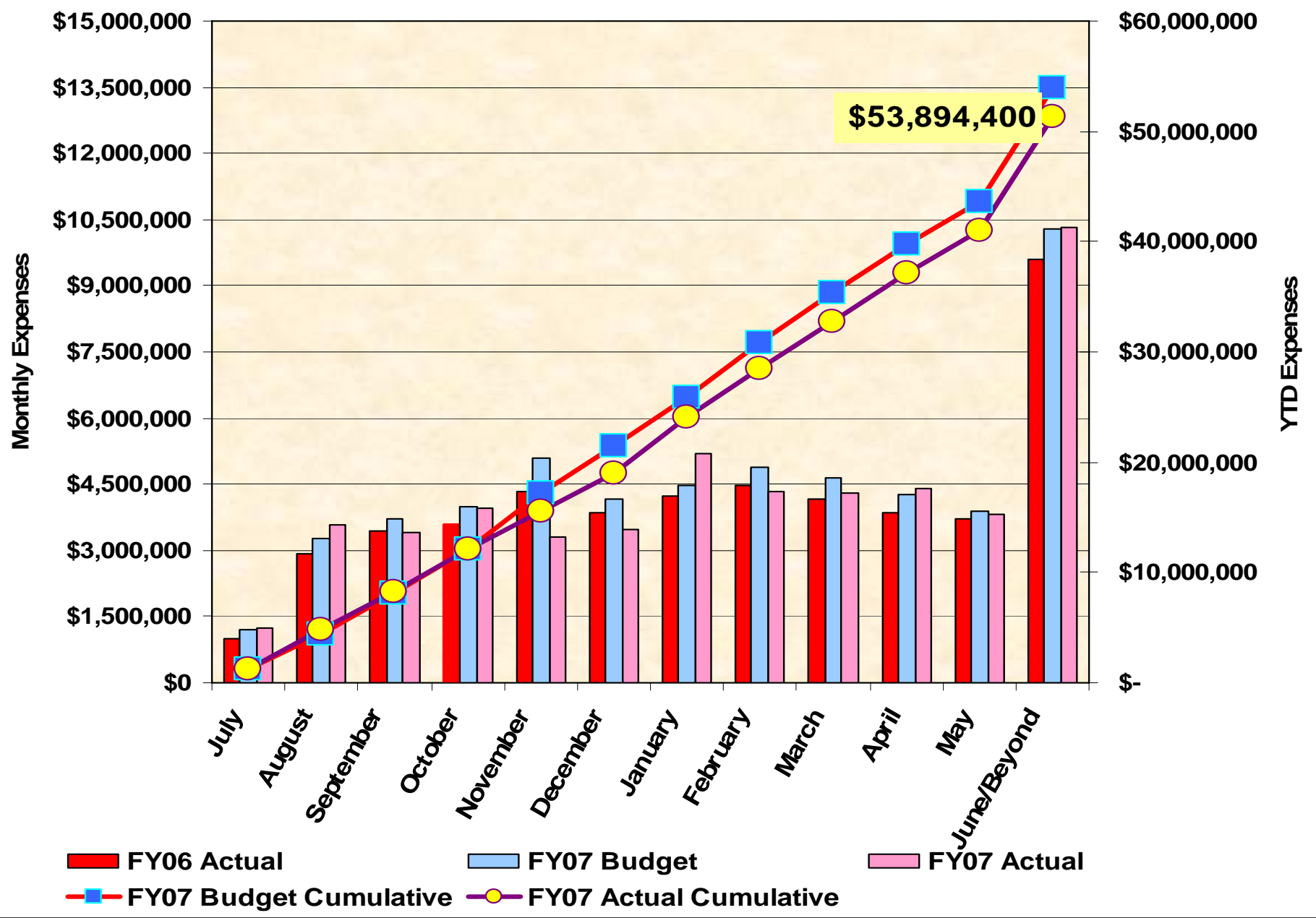
	747-400
Anchorage	\$ 1,266.16
Bangkok	\$ 1,892.00
Hong Kong	\$ 3,012.00
New York - JFK	\$ 4,456.55
Seattle	\$ 2,074.17
Seoul	\$ 2,982.14
Shanghai	\$ 2,149.14
Osaka	\$ 7,550.00
Taipei	\$ 3,540.25
Toronto	\$12,494.00
Tokyo	\$ 7,405.37
Vancouver	\$ 2,482.34

Terminal rental rates

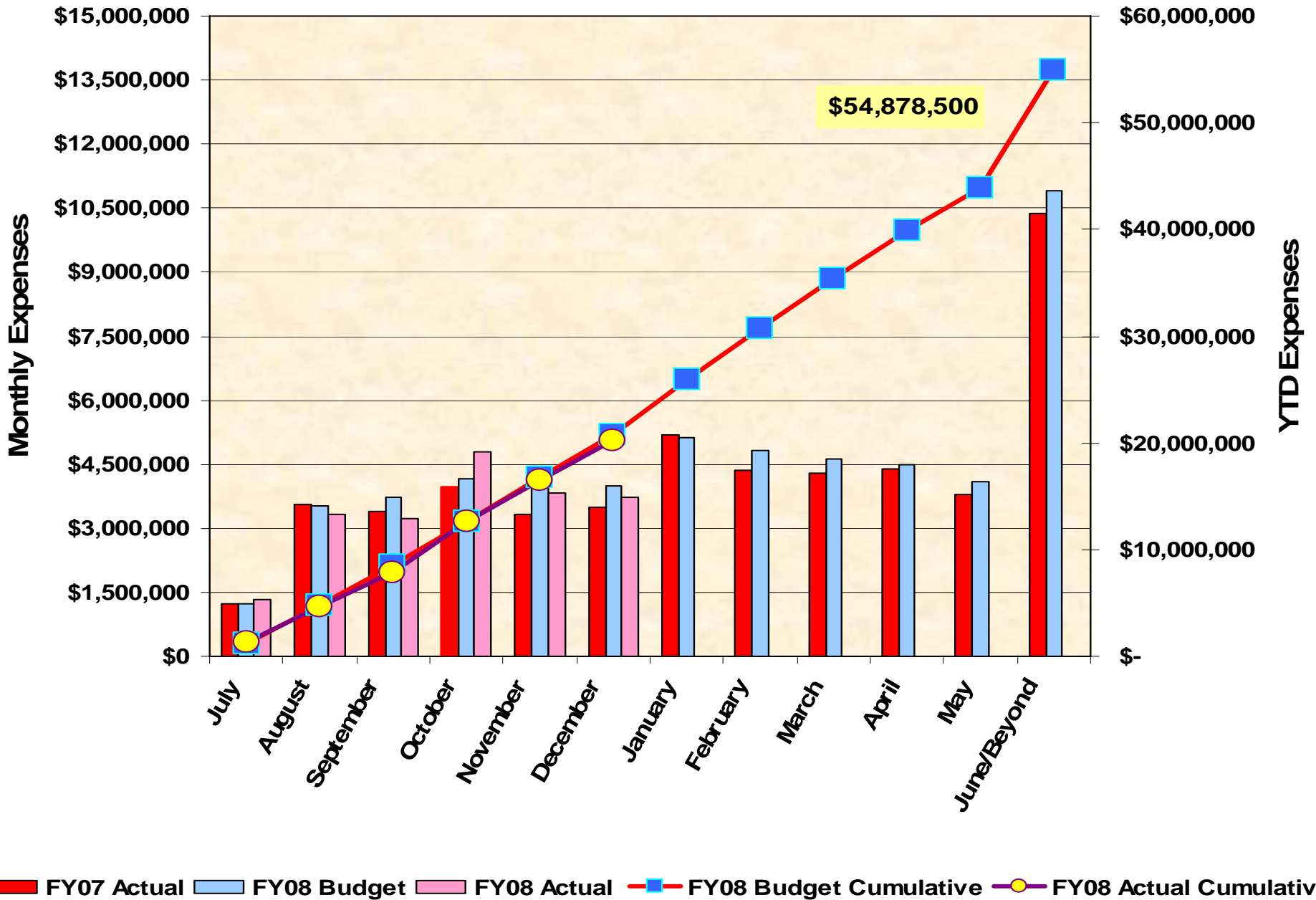
2007

<u>AIRPORT</u>	<u>RATE/SQ.FT./YR</u>
Seattle – Ticketing	\$391.27
Holdrooms	\$234.76
Portland – Ticketing (average)	\$240.00
Holdrooms (average)	\$216.00
Ontario – All Areas	\$141.70
Reno – Ticketing	\$117.84
Holdrooms	\$94.27
Boston – All Terminals (average)	\$122.91
<u>Anchorage – All Areas</u>	\$61.50

ANC TOTAL - FY 06 vs. FY 07 (FINAL)

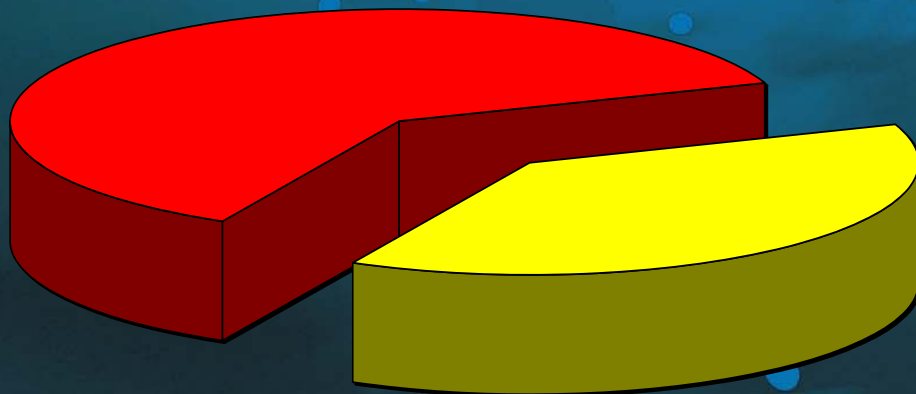


ANC TOTAL - FY 07 vs. FY 08



The Airport's Economic Impact.....18,434 Jobs

10,222
Airport Jobs



8,212
Community
Jobs

One in eight jobs in Anchorage

About \$562 million in direct annual payroll

Another \$288 million in annual payroll for community jobs

Environmental Stewardship

- Recycled 73.5 tons of cardboard, generating \$2,140.00 in revenue and avoiding \$3,080.00 in disposal costs. Increase of 145% over 2006 recycling levels.
- Recycled an estimated 6 tons of paper
- Glycol recovery operations affecting Lakes Hood and Spenard have dramatically improved water quality. In response to this improvement, vegetation growth and an active harvesting program continue to alleviate deicing chemical impacts to the lakes, consistent with the Airport's Waterbody Recovery Plan.
- RSIP - 2006 88 homes
 - 2007 55 homes
 - 386 Homes completed to date (5 years)
 - 2008 148 apartments and 20 homes planned



*Best Cargo Airport
Americas
2004*



March 2005 and 2007

**Air Cargo Excellence Survey
Airports Over 1,000,000 tons
Anchorage Ranked #1**

Balchen Post Award

Airfield Maintenance four-time recipient of the Balchen Post Award for excellence in airport snow and ice control.



Customer Service



Current Issues

- FAA Reauthorization
- Kulis ANGB
- Airline Lease Negotiations
- Master Plan
- Aviation Industry Outlook

Looking Forward

- **Hotel**
- **Development of West Airpark**
- **Tunnel and N/S Runway**
- **Moving Tower**



Thanks!



www.anchorageairport.com