



THE STATE
of **ALASKA**
GOVERNOR BILL WALKER

Department of Transportation and Public Facilities

ALASKA MARINE HIGHWAY SYSTEM
Office of the General Manager

7559 North Tongass Highway
Ketchikan, AK 99901-9101
Main: 907-228-7250
Fax: 907-228-6875

October 30, 2017

Dear Community Leaders and Members of the Public Interested in AMHS:

It is time to begin the public review process for the next Alaska Marine Highway scheduling cycle. The proposed schedule patterns to be reviewed cover the summer schedule from May through September 2018.

The schedule patterns proposed herein are based on the expected funding level for FY19. The operating plan has been designed to meet community service needs while staying within available funding levels, and maintaining regulatory and safety standards for the vessels.

Please take the time to review and comment on this proposed schedule. The link to access the proposed schedule patterns is: <http://www.dot.state.ak.us/amhs/share/schedule/considerations.pdf>

AMHS is also interested in knowing about any need for special events scheduling and other requests that organizers or communities may have. Please provide the even name, dates, location and arrival/departure times needed for each special event.

Please provide your written comments prior to November 10, 2017. Information may be faxed to 907-228-6874 or, preferably, emailed to dot.amhs.comments@alaska.gov. A public teleconference to hear additional comments and consider adjustments is scheduled for Thursday, November 16, 2017 at 10:00 a.m. for Southeast schedules and at 1:30 p.m. for Southwest and Southcentral schedules. The meeting will be held at the Alaska Marine Highway Ketchikan Central Office, 7559 North Tongass Highway for participants wishing to attend in person.

The toll free number to participate in both teleconferences is: 1-515-604-9000, access code 279613.

It is the policy of the Department of Transportation & Public Facilities that no person shall be excluded from participation in, or be denied benefits of any and all programs or activities we provide based on race, religion, color, gender, age, marital status, ability, or national origin, regardless of the funding source including Federal Transit Administration, Federal Aviation Administration, Federal Highway Administration and State of Alaska Funds.

The State of Alaska Department of Transportation & Public Facilities complies with Title II of the Americans with Disabilities Act of 1990. Individuals with disabilities who may need auxiliary aids, services, and/or special modifications to participate in this public meeting should contact AMHS Operations Manager, Captain Tony Karvelas at (907) 228-7252, or email at anthony.karvelas@alaska.gov, no later than November 2 to make any necessary arrangements

If you have any additional questions or need additional information, please contact the AMHS Operations Manager, Tony Karvelas, at (907) 228-7252.

"Keep Alaska Moving through service and infrastructure."

Sincerely,



Captain John F. Falvey, Jr.
General Manager

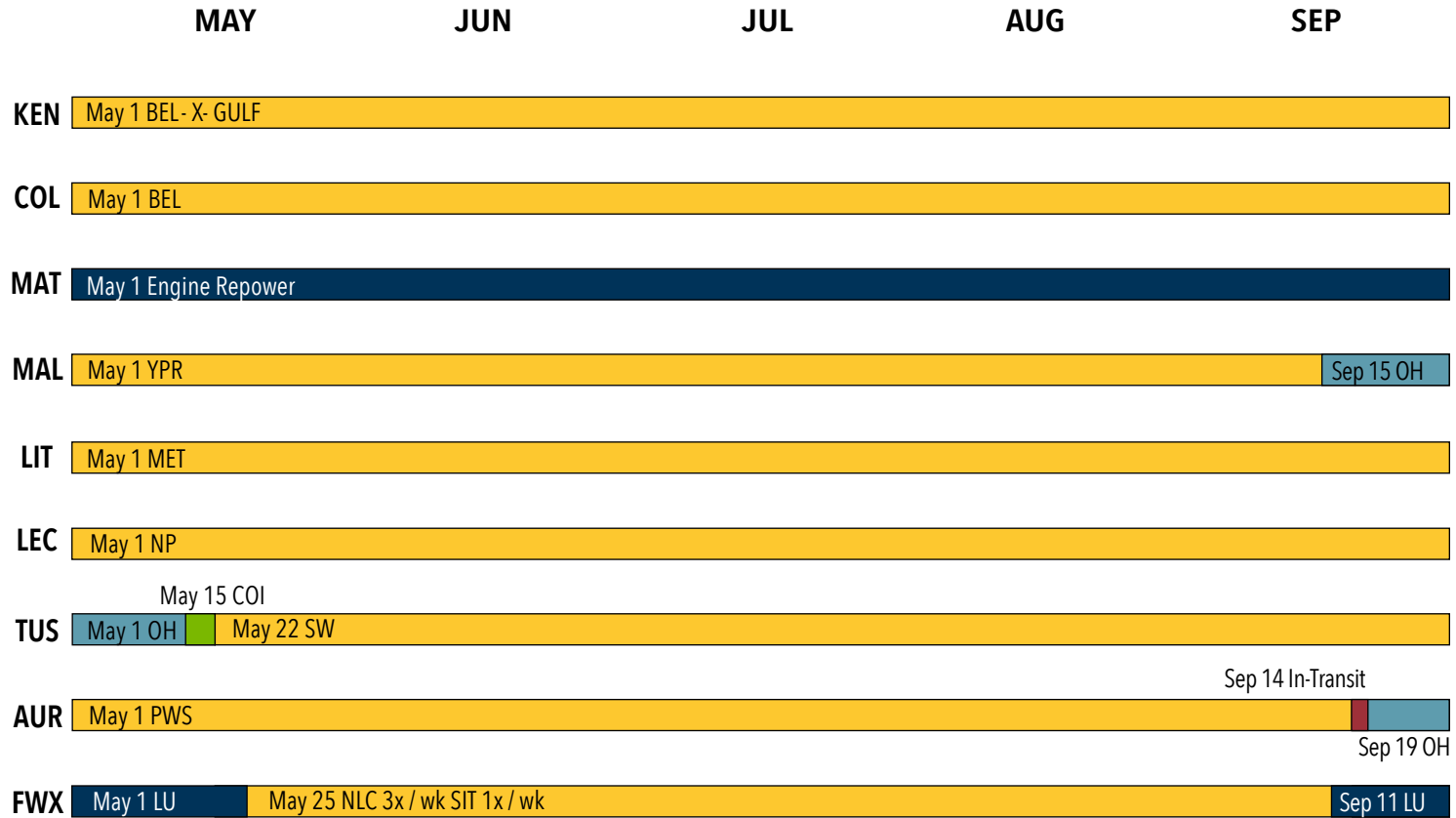
ENCLOSURES:

Draft FY19 Operating Plan
Calendars of Events
Weekly Vessel Pattern Graphs
FY19 Vessel Deployment Plan
Guide to Reading and Using AMHS Scheduling Graphs

DISTRIBUTION:

All Southeast Alaska Mayors
All Southcentral Alaska Mayors
All Southwest Alaska Mayors
Alaska Travel Industry Association
ARDORS
Commercial Shipping Companies
CVBs
DOT/PF Southeast Regional Director
Marine Transportation Advisory Board
Managers, AMHS Terminals
Masters, AMHS Vessels
Unions
 IBU
 MM&P
 MEBA
Tlingit & Haida Central Council
S.E. Alaska Tribal Government Advisory Committee

Operating Plan Summer 2018



 On Line	BEL: Bellingham to Skagway	NLC: North Lynn Canal	SIT: Sitka
 Overhaul (OH)	BEL - X - Gulf: Bellingham Cross Gulf Southwest	NP: Northern Panhandle Dayboat	SW: Southwest
 Layup (LU)	MET: Metlakatla Service	PWS: Prince William Sound	YPR: Prince Rupert to Skagway
 COI			
 In-Transit			

Note: Dates represent the first day of the period. Overhaul and refurbishment periods include vessel travel time.

Alaska Marine Highway System
Summer 2018
October 15, 2017

Proposed Vessel Deployment

- Kennicott to operate Bellingham cross the Gulf to Southwest, May to September, with a chain trip May 06.
- Columbia to remain on the Friday Bellingham Route, May through September.
- Malaspina to sail from Prince Rupert to Skagway, once per week and from Prince Rupert to Juneau once per week until entering Overhaul mid- September.
- Fairweather to sail Lynn Canal three days per week, Sitka one day per week, May 24 to September 09.
- Lituya to sail 5 days per week between Annette Bay and Ketchikan
- LeConte to sail a Northern Panhandle Route. Pelican once per month on Sun.
- Tustumena to sail the Southwest Route with two Aleutian chain trips per month. The first chain trip is May 29. Old Harbor will receive one stop per month June to September.
- Aurora to sail between Cordova, Valdez and Whittier, also serving Tatitlek twice per month until entering overhaul September 14.
- The following vessels are not operational during this summer schedule: Chenega, Matanuska.

Guide to Reading and Using AMHS Scheduling Graphs (Or Spider Graphs as they are affectionately known)

The AMHS scheduling graphs convey a massive amount of information on a single page, and they can be confusing to understand and interpret. The following explanations and suggestions may help.

1. The title of the graph defines the geographic area depicted by the chart and the time period to which it applies. When “Wk 1 & 3” or “Wk 2 & 4” appear, it implies that the schedule alternates every other week of the month (i.e. that the schedule is not the same every week). Essentially, a week 1 schedule would be followed by week 2, then back to week 3 (which is the same as week 1) and so on to round out the 4 weeks of a month.
2. The days of the week and times of the day are spread across the top axis of the chart. Midnight to midnight is shown for each day with only noon shown on the graph for reference and to declutter it.
3. The various ports are shown on the left side axis of the chart using their three letter AMHS designator. A key to decipher port and ship codes is on page 2 of this guide. Ports with only one dock or ship berth are shown on a single line. Ports with multiple docks have a line for each dock (e.g. JNU 1, JNU 2, JNU 3). They are generally arranged in geographic order, such as Skagway at the top (north) and Bellingham at the bottom (south).
4. Each ship is shown in a different color, and has the ship’s three letter identifier listed beside it throughout the chart for reference. A solid bar of a particular ship’s color in a specific port’s row on the chart indicates the time for that ship to be in that port. By reference to the top axis, you can determine the approximate times of those in port periods.
5. Thin lines of a ship’s color between ports indicate transit time for that particular ship between the two ports at either end of the line.
6. Thin lines that “run off the right edge of the chart” are continued, either on the left edge of the same chart (if running on a weekly scheduling cycle) or on the left edge of the alternating Wk 1&3, Wk 2&4 chart (if running on a two week scheduling cycle).
7. Ships that transition between geographic areas (e.g. Kennicott going across the Gulf of Alaska) have a notation box at the end of their thin transit line indicating such “To X-Gulf” or “Fr X-Gulf”

Suggestions for use:

1. To see what a particular ship does, just follow that ship’s colored line as it zigzags across the chart to determine what ports it visits and on what days and at what approximate times.
2. To see what service a particular community receives, just follow that community’s horizontal row across the chart to see what ships stop in that community and on which days of the week and times of the day that happens. You can also determine, by looking at that ship’s thin transit lines, where a ship serving your community is coming from and where it is going to next.

AMHS Community and Ship Three Letter Codes

Communities

ANB=Annette Bay
AKU = Akutan
ANG = Angoon
BEL = Bellingham, WA
CBY = Cold Bay
CDV = Cordova
CHB = Chenega Bay
CHG = Chignik
FPS = False Pass
GUS = Gustavus
HNS = Haines
HNH = Hoonah
HOM = Homer
JNU = Juneau (Auke Bay)
KAE = Kake
KCV = King Cove
KOD = Kodiak
KTN = Ketchikan
OLD = Old Harbor
ORI = Port Lions
OUZ = Ouzinkie
PEL = Pelican
PSG = Petersburg
SDP = Sand Point
SDV = Seldovia
SGY = Skagway
SIT = Sitka
TAT = Tatitlek
TKE = Tenakee
UNA = Unalaska/Dutch Harbor
VDZ = Valdez
WRG = Wrangell
WTR = Whittier
YAK = Yakutat
YPR = Prince Rupert, BC

Ships

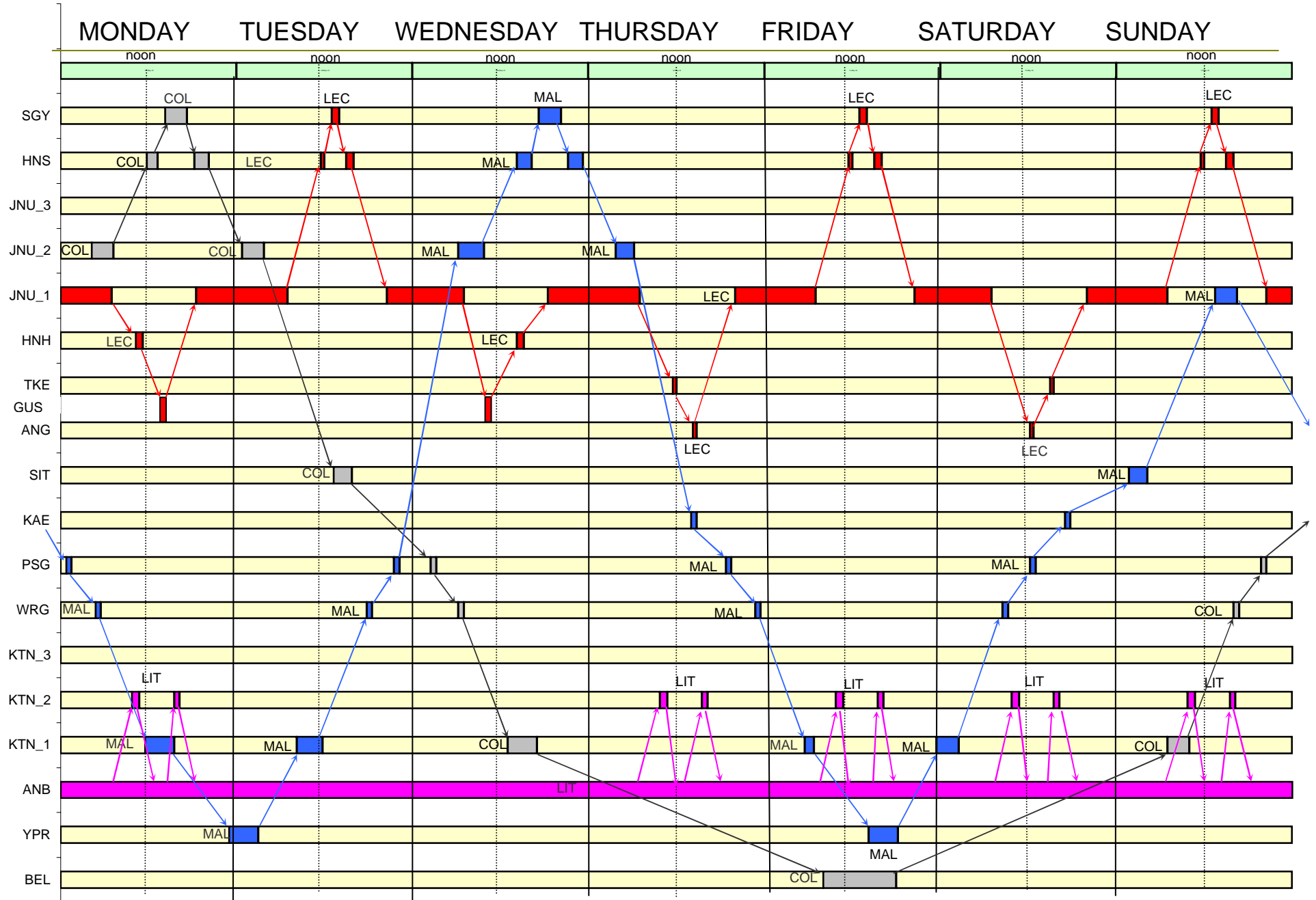
AUR = Aurora
CHE = Chenega (Fast Ferry)
COL = Columbia
FWX = Fairweather (Fast Ferry)
KEN = Kennicott
LEC = LeConte
LIT = Lituya
MAL = Malaspina
MAT = Matanuska
TAK = Taku
TUS = Tustumena

DRAFT

SE Summer 2018 May

DRAFT

Revised 10-12-20117

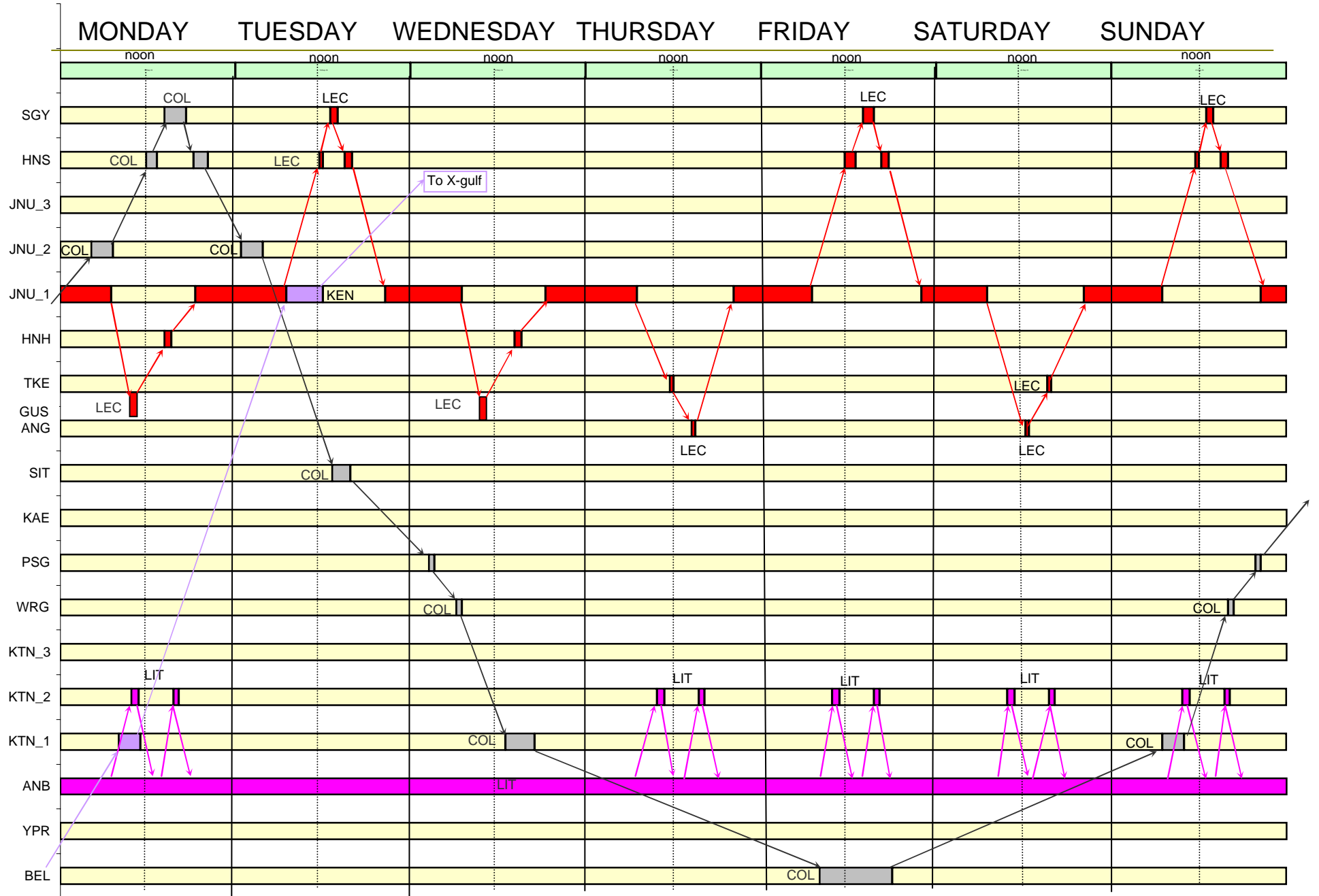


DRAFT

SE Summer 2018 mid-end Sep

DRAFT

Revised 10-12-2017



Summer 2018 Southeast Community Events

rev 10-8-17

MAY

Great Ak Craftbeer and Homebrew Fest	HNS	May 26-27
Little Norway	PSG	May 18-21

JUNE

Kluane Bike Relay	HNS	June 17
-------------------	------------	---------

JULY

Dustball Tournament	WHT	June 15-18
SE Alaska State Fair	HNS	July 27-30

AUGUST

Founder's Day	MET	Aug 4-7
Dog Salmon Festival	KAE	

SEPTEMBER

Mudball	SIT	Sept 04
Klondike Road Relay	SGY	Sept 8-9

-

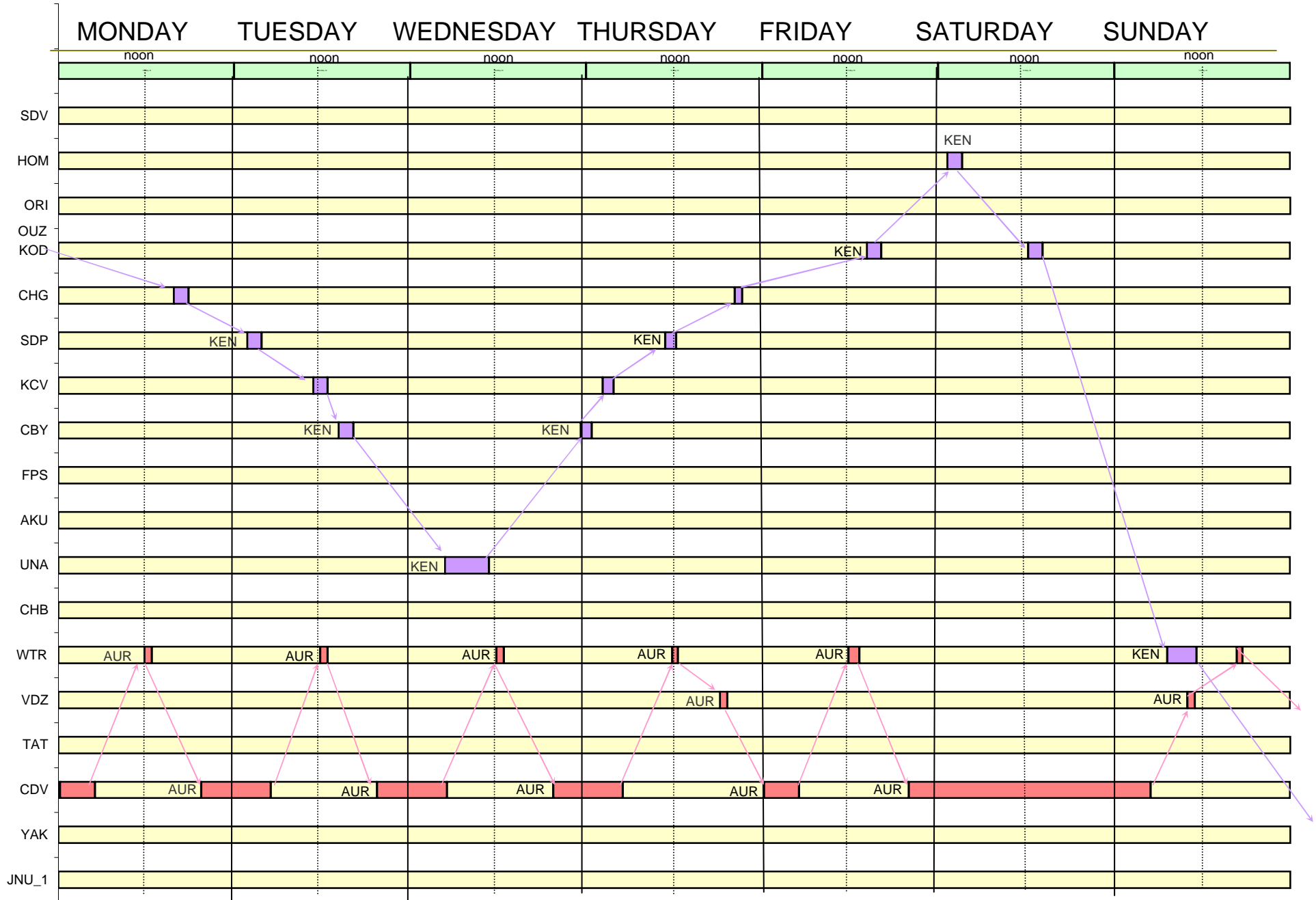
Please review the above Community Calendar of Events and comment on any events that are missed for your community. Schedule patterns may be changed if warranted to be able to provide service to/from the events.

DRAFT

SW-PWS Summer 2018 early-mid May Wk 1

DRAFT

Revised 10-19-2017

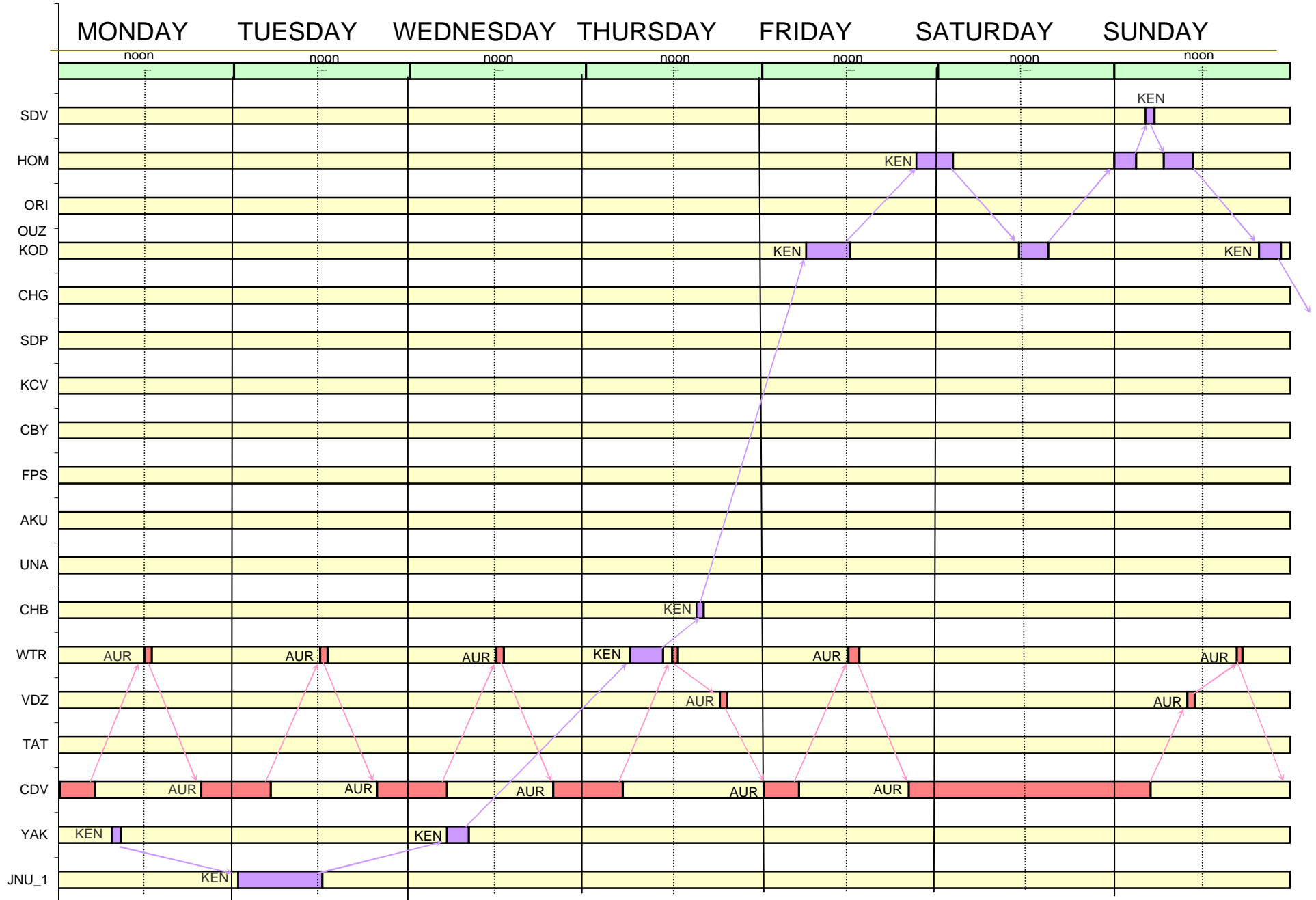


DRAFT

SW-PWS Summer 2018 early-mid May Wk 2

DRAFT

Revised 10-19-2017

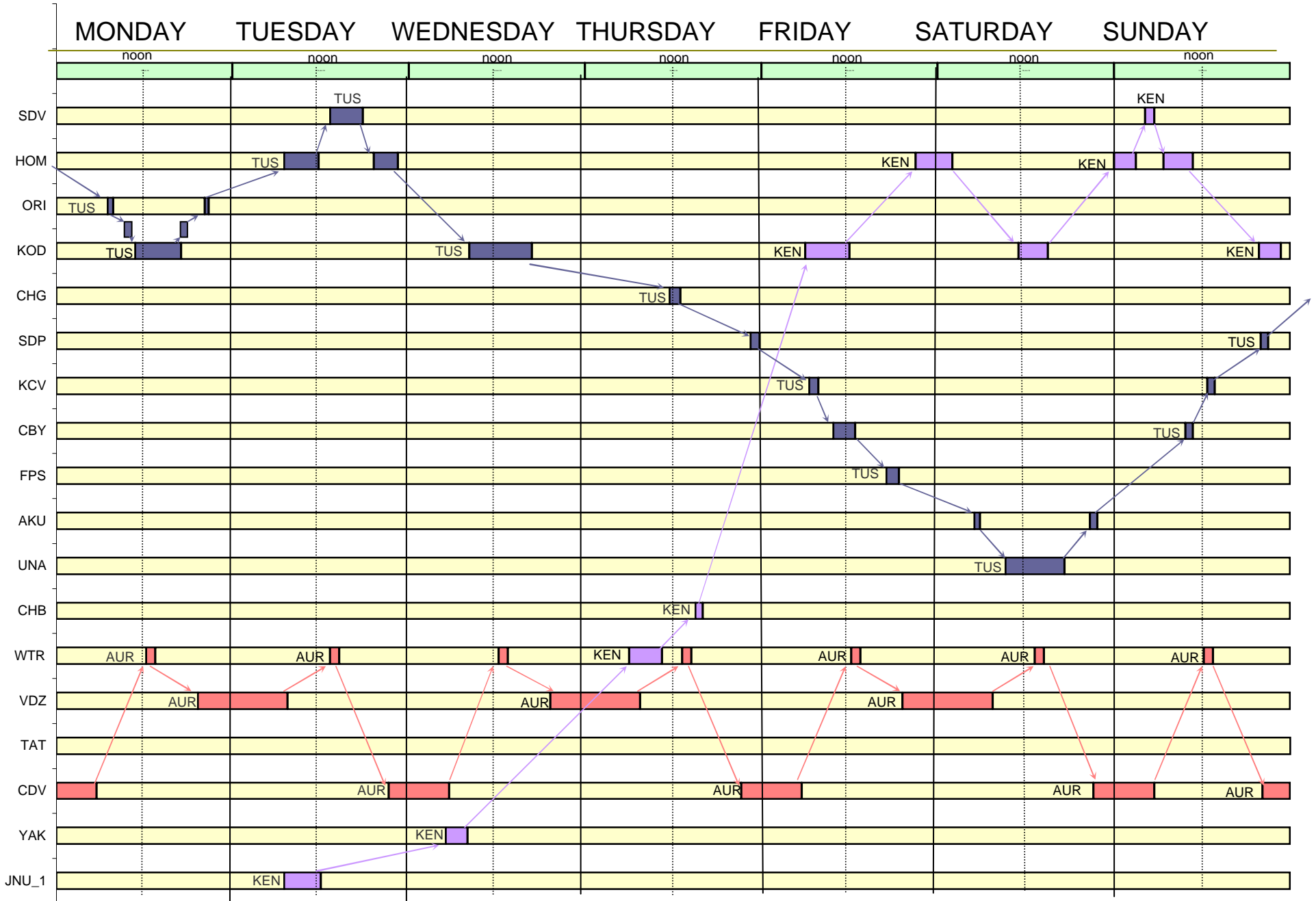


DRAFT

SW-PWS Summer 2018 Wk 1 & 3

DRAFT

Revised 05-12-2016

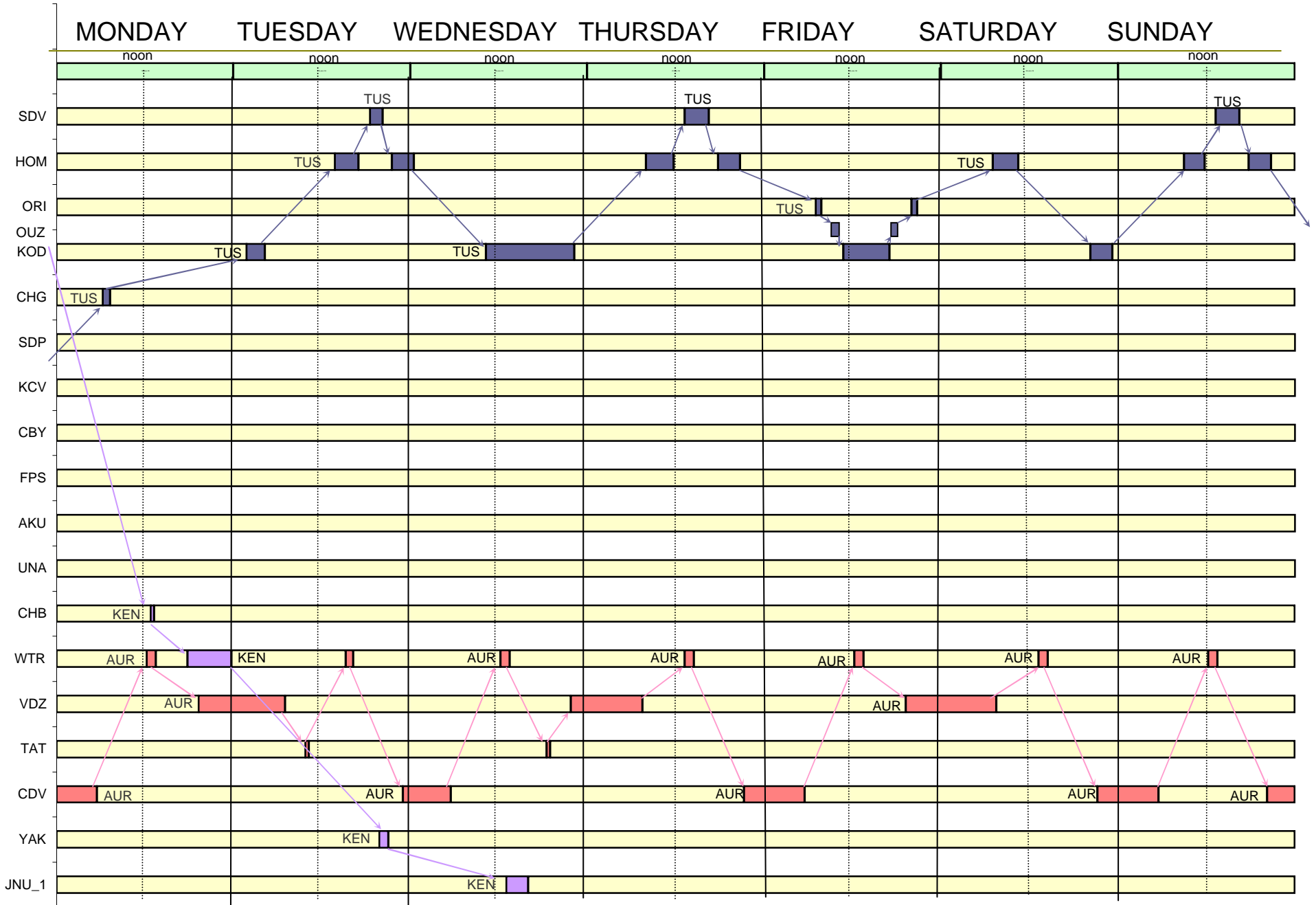


DRAFT

SW-PWS Summer 2018 Wk 2 & 4

DRAFT

Revised 10-20-2017

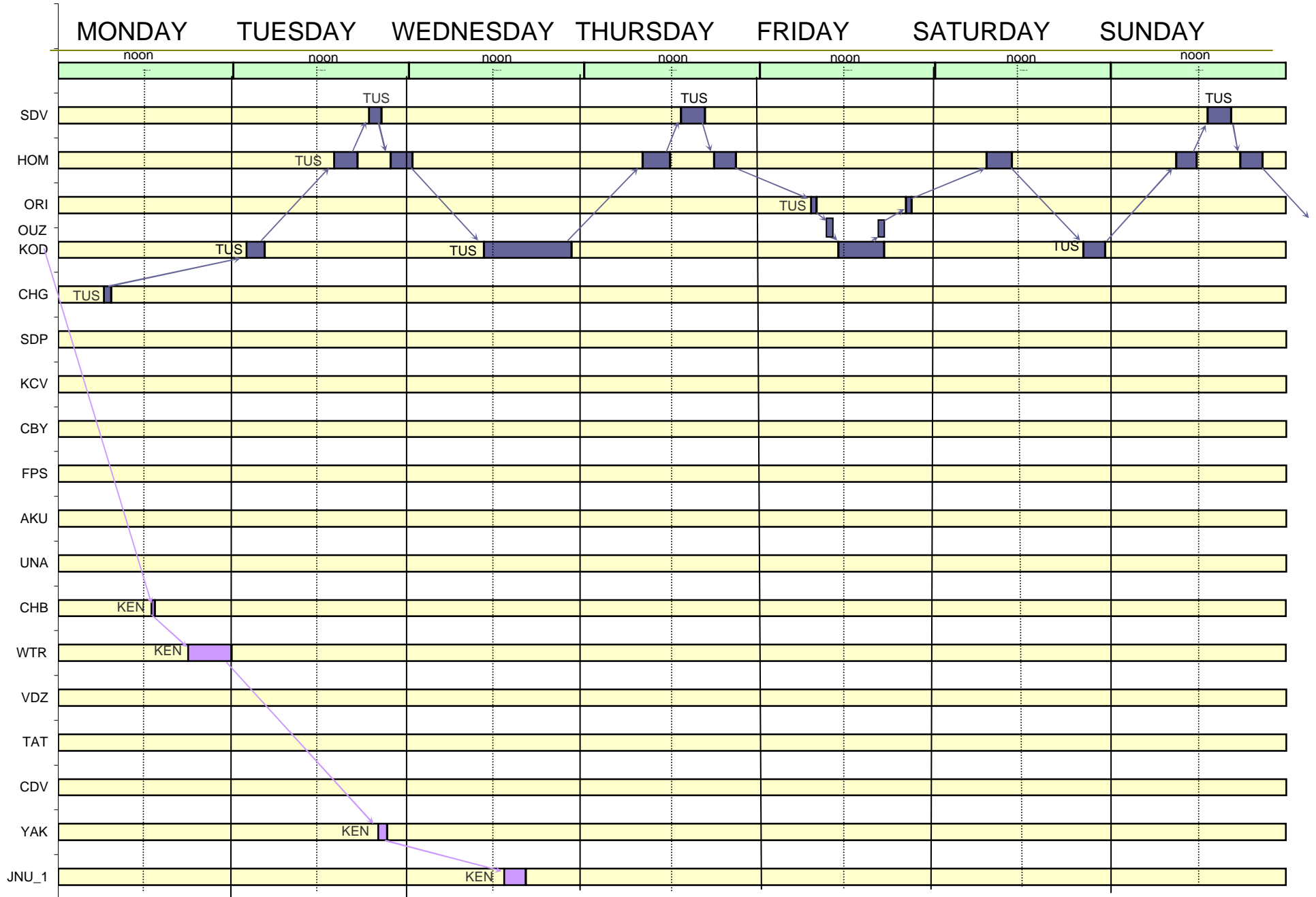


DRAFT

SW-PSW Summer 2018 mid-end Sep

DRAFT

Revised 10-20-2017



Summer 2018 SW/SC Community Events

rev 10-8-17

MAY

PWS Shorebird Festival
Kodiak Crab Festival

CDV May 4-7
KOD May 25-29

JUNE

Copper River Nouveau

CDV

JULY

Copper River Wild Festival

CDV

AUGUST

SEPTEMBER

-

Please review the above Community Calendar of Events and comment on any events that are missed for your community. Schedule patterns may be changed if warranted to be able to provide service to/from the events.