

GENERAL NOTES

- SUN DECK AND ABOVE HAVE CAMBER PARALLEL TO PASSENGER DECK AND NO SHEER.
- SCANTLINGS DEPICTED GENERALLY CONFORM TO REF. 3 WHICH IS BASED ON THE YEAR 2000 ABS RULES FOR BUILDING AND CLASSING STEEL VESSELS.

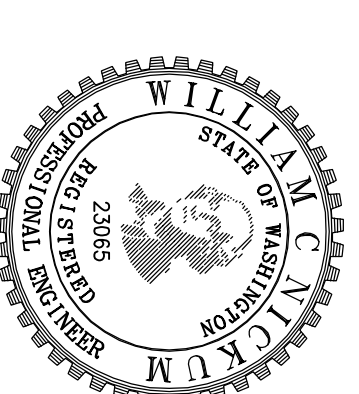
REFERENCES

- 06137-005-120-2 PRELIMINARY INBOARD STRUCTURAL PROFILE
- 06137-005-101-1 PRELIMINARY PROFILES AND ARRANGEMENTS
- 06137-005-061-1 PRELIMINARY SCANTLINGS REPORT

Elliott Bay Design Group
 Seattle • New Orleans

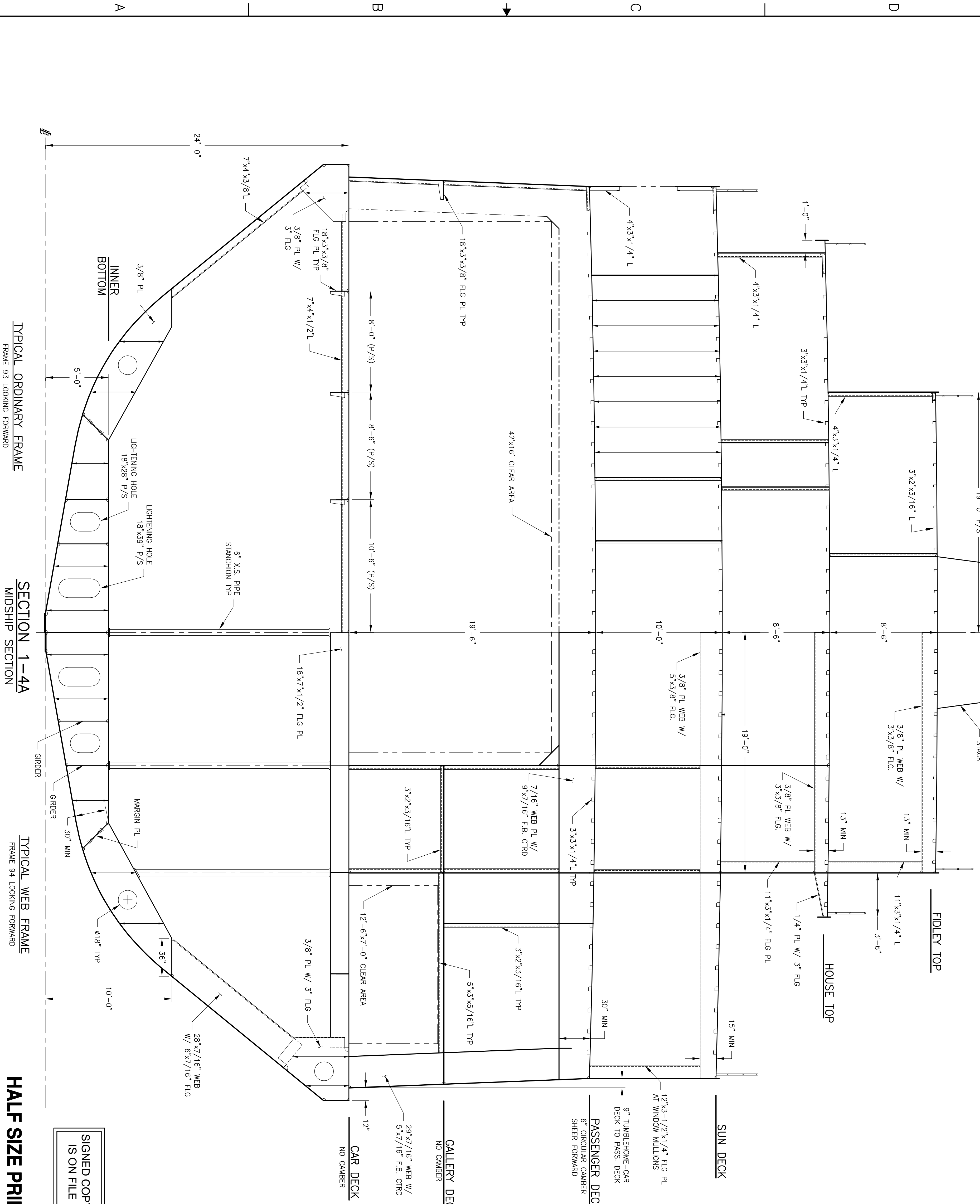
ALASKA MARINE HIGHWAY SYSTEM
 Ketchikan, Alaska
 ALASKA CLASS FERRY

PROJECT TITLE: PRELIMINARY MIDSHIP SECTION

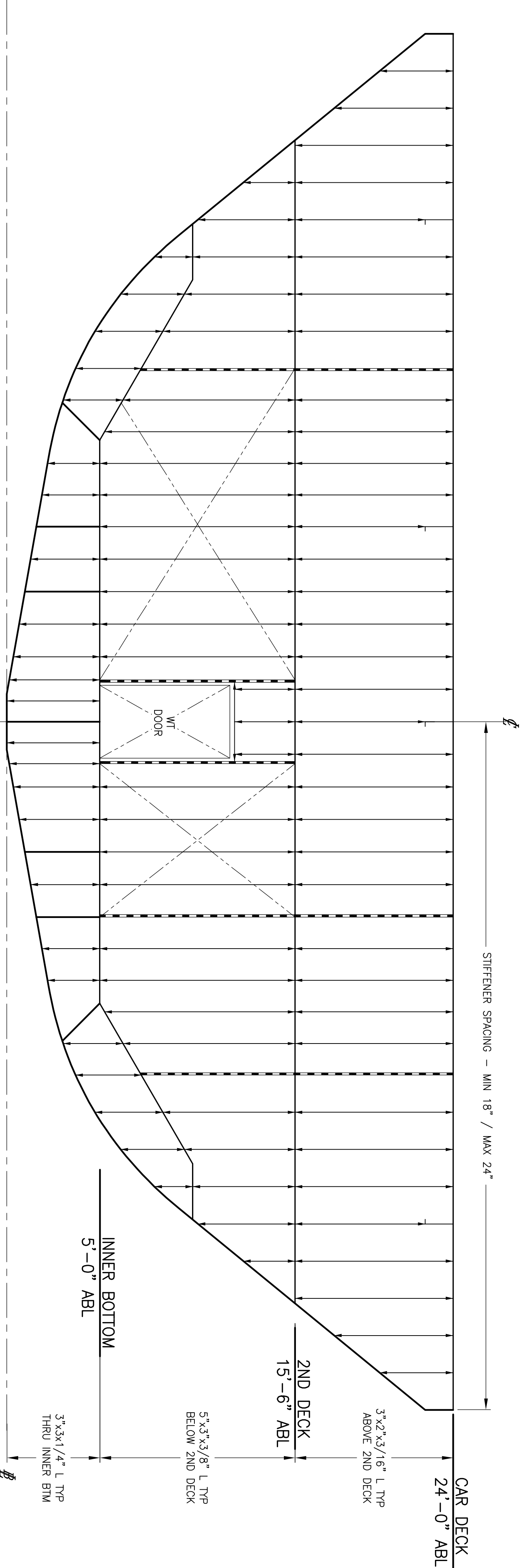


HULL PLATING

KEEL PLATE	-3/4"
BOTTOM SHELL	-1/2"
SIDE SHELL	-1/2"
GUARD PLATE	-3/4"
CAR DECK	-1/2"
INNER BOTTOM	-1/2"



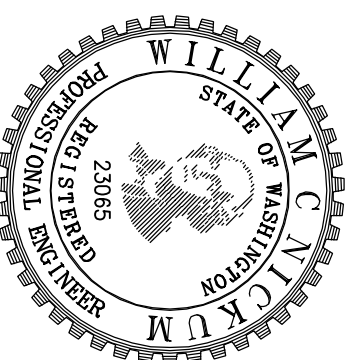
SIGNED COPY IS ON FILE



SECTION 2-4A
 TYPICAL WT BHD
 BHD FR 87 SHOWN LKG FWD
 SCALE: 1/4"=1'-0"

HALF SIZE PRINT

SIGNED COPY
 IS ON FILE



SIZE	D	SHEET NO.	06137-005-120-1	REV	-
SCALE	AS NOTED	FILE NAME	06137-005-120-1-dwg	SHEET	2 OF 2