

CONFIDENTIAL AND PROPRIETARY PROPERTY OF
Elliott Bay Design Group LLC
 MAY NOT BE USED FOR CONSTRUCTION OR PROVIDED TO
 ANY THIRD PARTIES WITHOUT PRIOR WRITTEN CONSENT.
 ©2010 ELLIOTT BAY DESIGN GROUP.

REVISION HISTORY

REV	ZONE	DESCRIPTION	DWN	DATE	APVD
-----	------	-------------	-----	------	------

GENERAL NOTES

- SHEETS 2-8 DEPICT LOAD AND UNLOAD SCENARIOS FOR THE CAR DECK OF THE ALASKA CLASS FERRY (REF. 1). THESE SCENARIOS WERE RUN USING AUTOTURN SOFTWARE (VERSION 6.1).
- THE HYBRID 53 VEHICLE IS A COMBINATION OF A WB-67 53' VAN AND A WB-17 CAB OVER TRACTOR. THIS SIMULATES THE SCENARIO OF LOADING AND UNLOADING A 53' VAN THAT HAS BEEN DISCONNECTED FROM ITS TRACTOR AND MOVED WITH A YARD TUG.
- THE BBSA IS A 49'-0" COACH BUS.
- THE RESULT OF THE WB-67 AND WB-17 STBD DOOR UNLOADS WAS A FAIL SCENARIO, ALTHOUGH THE DESIGNER BELIEVES THIS TO BE A LIMITATION OF THE SOFTWARE USED TO GENERATE THIS DRAWING.
- THE RESULT OF THE HYBRID-53 STBD DOOR UNLOADS WAS A FAIL SCENARIO, ALTHOUGH THE DESIGNER BELIEVES THIS TO BE A LIMITATION OF THE SOFTWARE USED TO GENERATE THIS DRAWING.

REFERENCES

- 06137-005-101-1 PROFILE AND ARRANGEMENTS

Elliott Bay Design Group
 Seattle • New Orleans

CLIENT: ALASKA MARINE HIGHWAY SYSTEM
 Ketchikan, Alaska

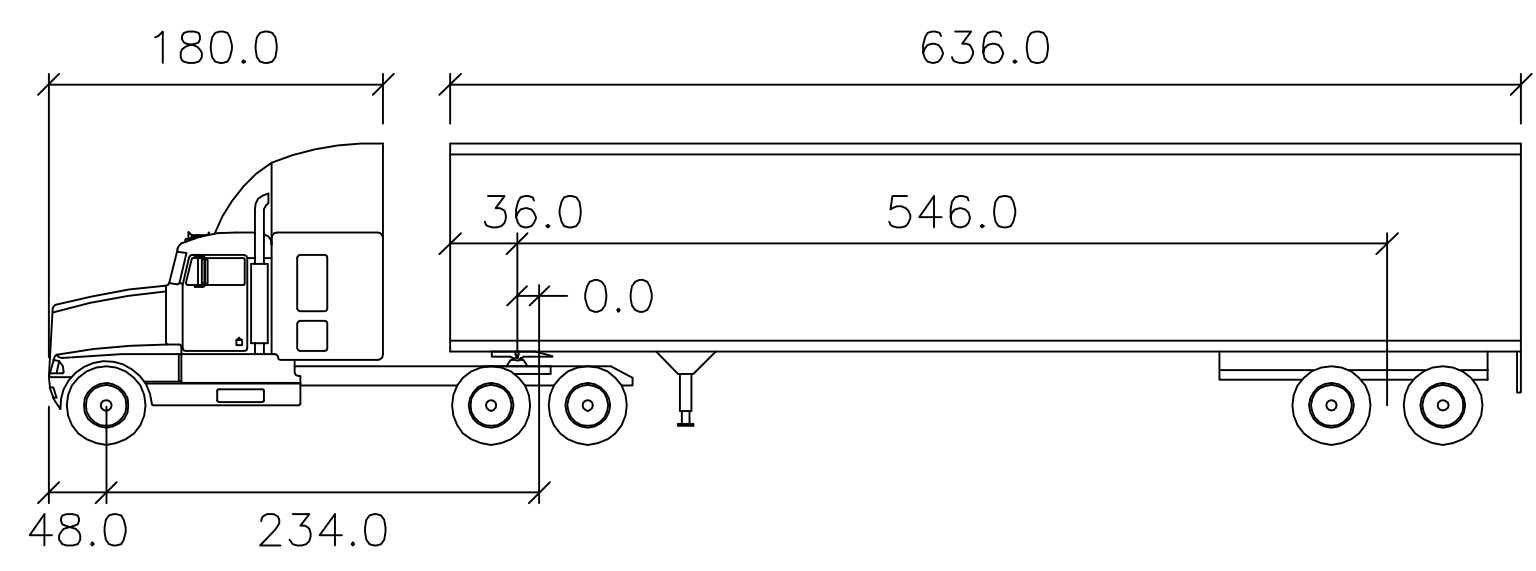
PROJECT: ALASKA CLASS FERRY



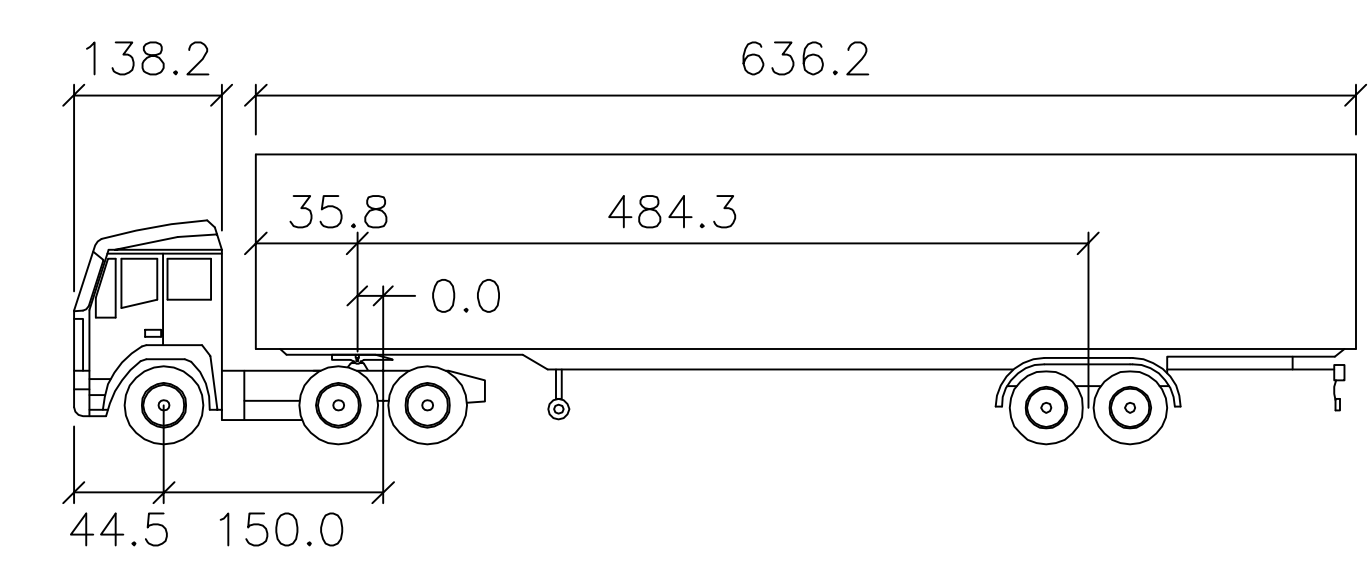
SIGNED COPY
 IS ON FILE

PRELIMINARY VEHICLE DECK
 LOADING ANALYSIS

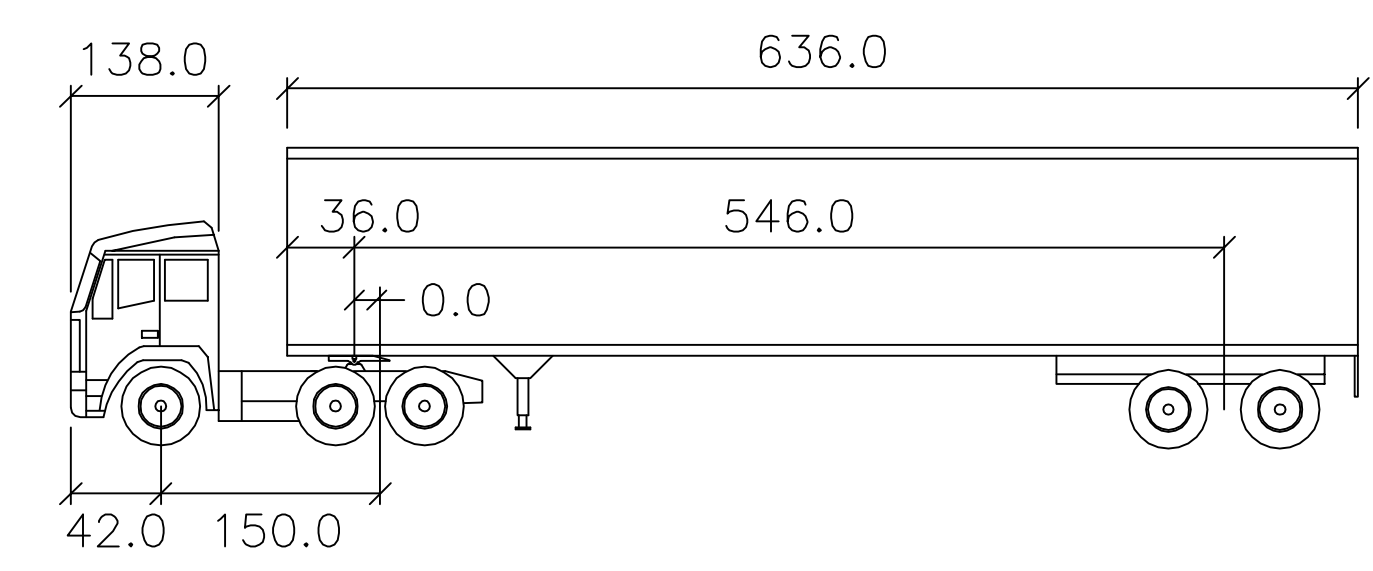
SIZE	D	DWG NO.	06137-005-070-4	REV	-
SCALE	AS NOTED	FILE NAME	06137-005-070-4-	SHEET	1 OF 10
DWN	PEF	MOD		CRD	WCN
				APVD	M-W
				APVD DATE	03/08/2010



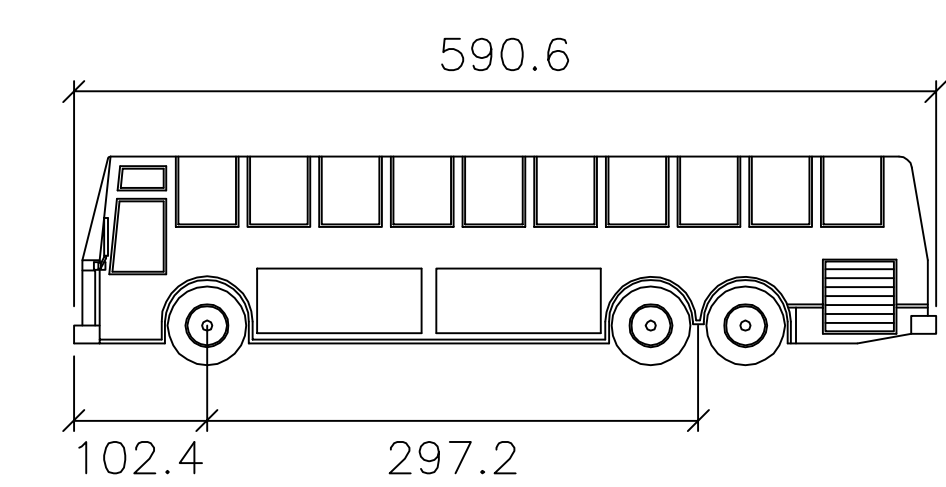
WB-67 inches
 Tractor Width : 96.0
 Trailer Width : 102.0
 Tractor Track : 96.0
 Trailer Track : 102.0



WB-17 inches
 Tractor Width : 96.1
 Trailer Width : 102.0
 Tractor Track : 96.1
 Trailer Track : 102.0



Hybrid 53 inches
 Tractor Width : 96.0
 Trailer Width : 102.0
 Tractor Track : 96.0
 Trailer Track : 102.0

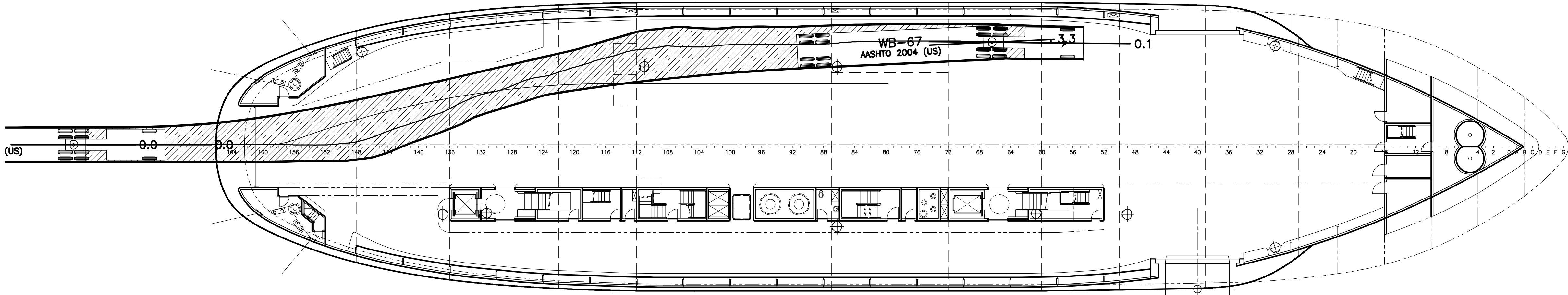


BBSA inches
 Width : 100.4
 Track : 100.4

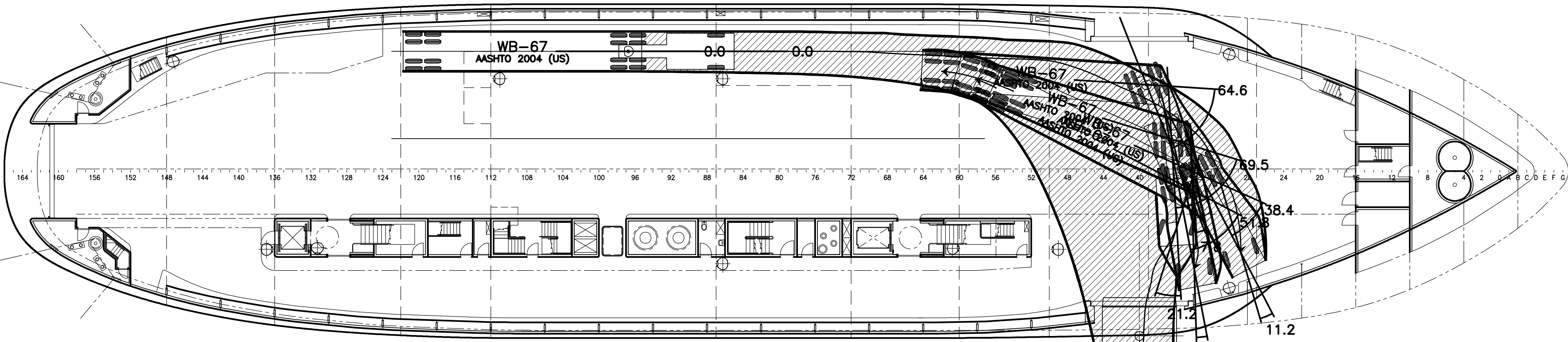
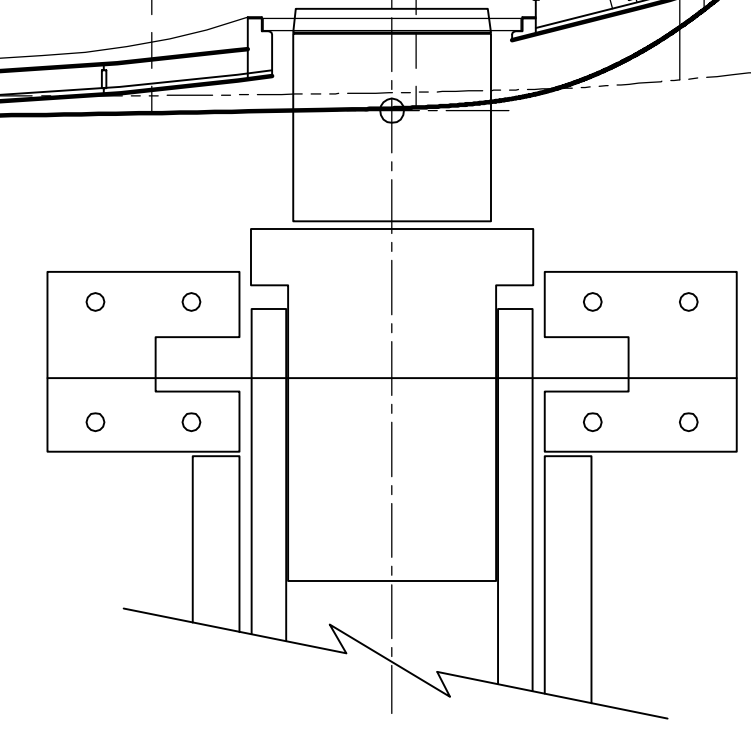
INDEX

SHEET NO.	SHEET CONTENT
1	VEHICLE DIMENSIONS
2	WB-67, AFT LOAD, STBD UNLOAD
3	HYBRID-53, AFT LOAD, STBD UNLOAD
4	WB-17, AFT LOAD, STBD UNLOAD
5	BBSA, AFT LOAD, STBD UNLOAD
6	WB-67, STBD LOAD, AFT UNLOAD
7	WB-17, STBD LOAD, AFT UNLOAD
8	BBSA, STBD LOAD, AFT UNLOAD
9	STBD DOOR LOAD SECTIONS
10	STBD DOOR LOAD SECTIONS

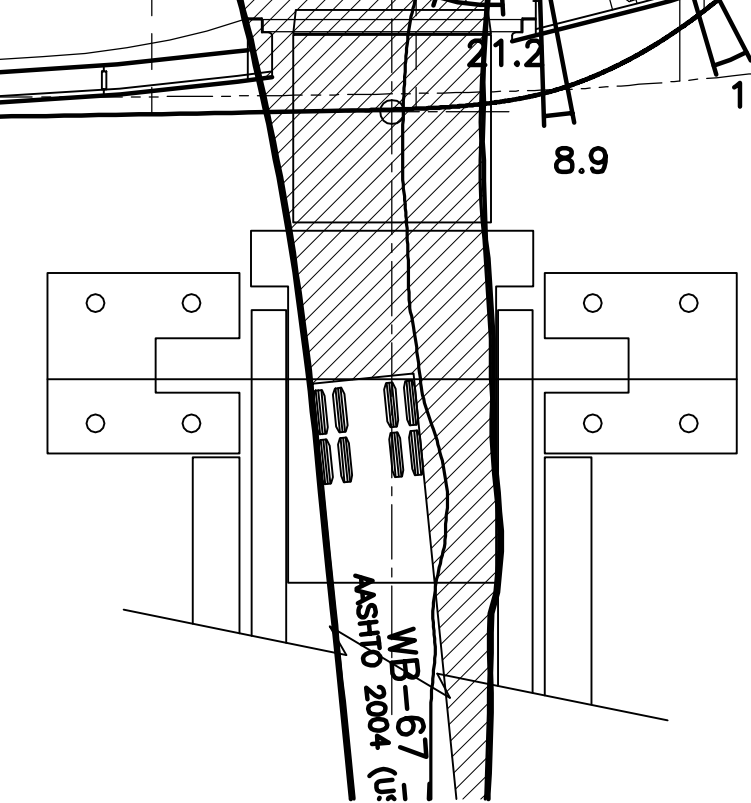
CONFIDENTIAL AND PROPRIETARY PROPERTY OF
Elliott Bay Design Group LLC
 MAY NOT BE USED FOR CONSTRUCTION OR PROVIDED TO
 ANY THIRD PARTIES WITHOUT PRIOR WRITTEN CONSENT.
 ©2010 ELLIOTT BAY DESIGN GROUP.



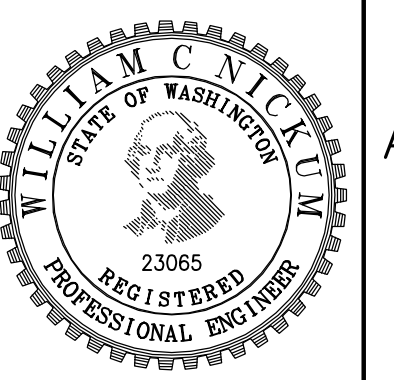
PLAN 2-4C
 VEHICLE: WB-67
 AFT DOOR LOAD
 SCALE: 1/16"=1'-0"
 RESULT: PASS



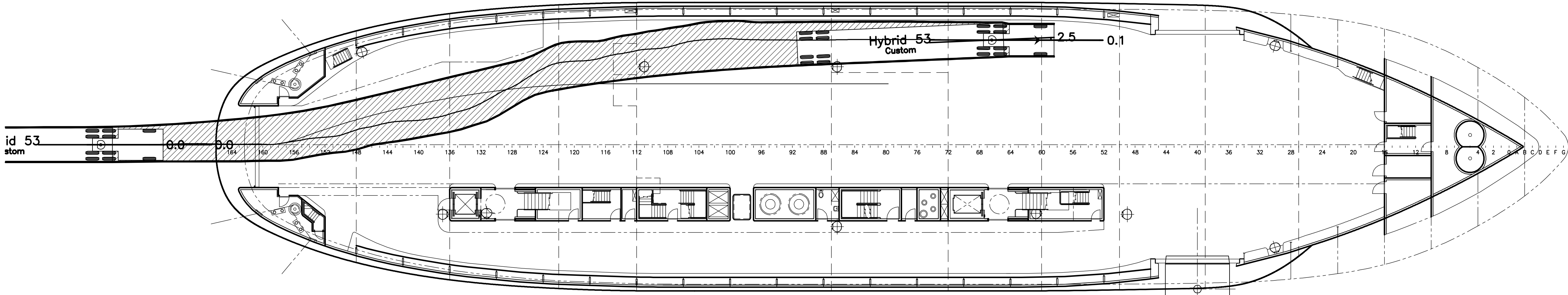
PLAN 2-4A
 VEHICLE: WB-67
 STBD DOOR UNLOAD
 SCALE: 1/16"=1'-0"
 RESULT: FAIL
 SEE NOTE 4



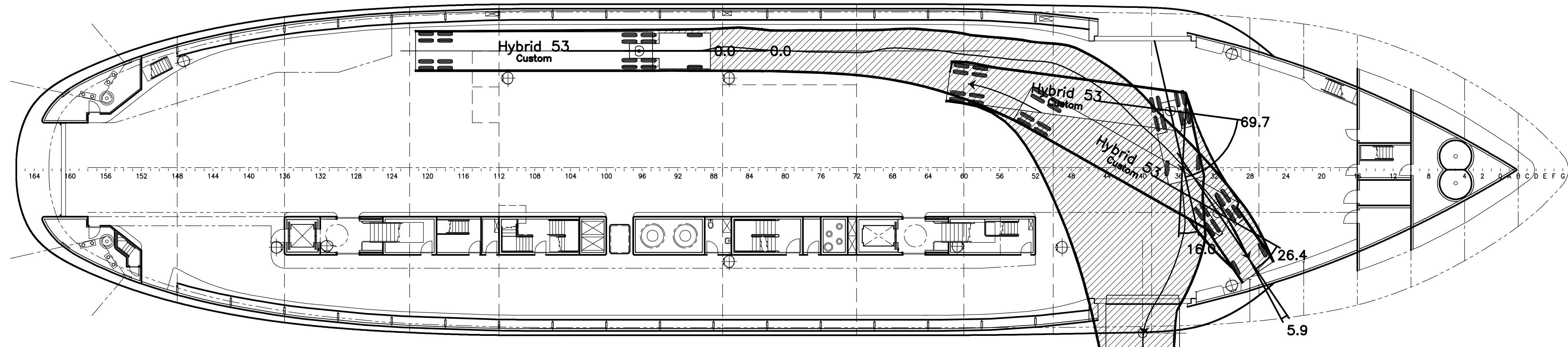
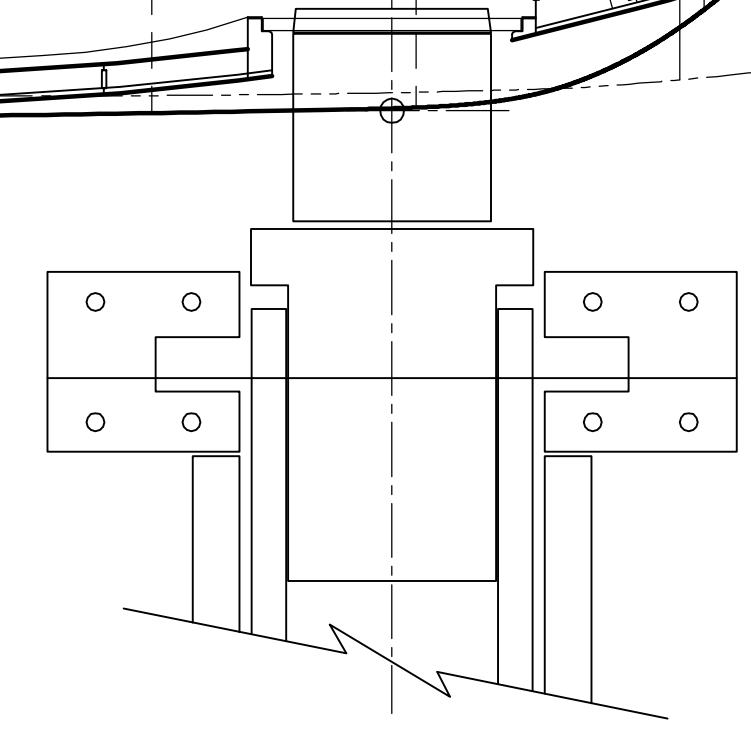
SIGNED COPY
 IS ON FILE



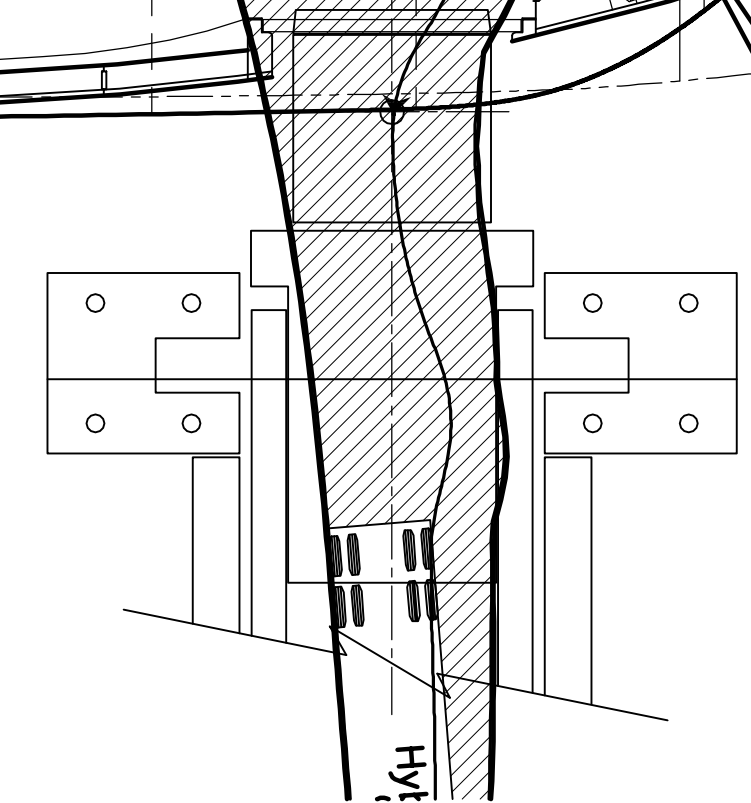
CONFIDENTIAL AND PROPRIETARY PROPERTY OF
Elliott Bay Design Group LLC
 MAY NOT BE USED FOR CONSTRUCTION OR PROVIDED TO
 ANY THIRD PARTIES WITHOUT PRIOR WRITTEN CONSENT.
 ©2010 ELLIOTT BAY DESIGN GROUP.



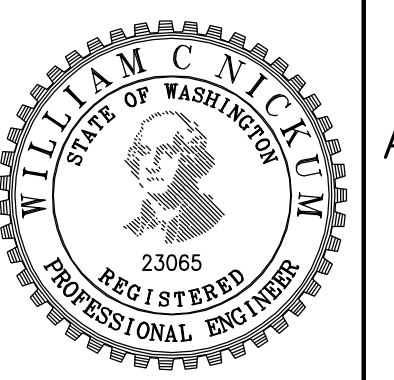
PLAN 3-4C
 VEHICLE: HYBRID-53
 AFT DOOR LOAD
 SCALE: 1/16"=1'-0"
 RESULT: PASS
 SEE NOTE 2

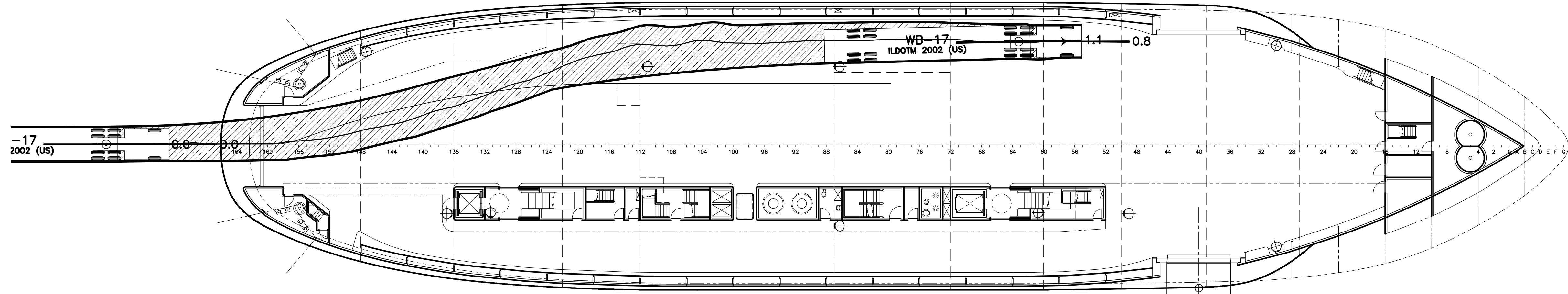


PLAN 3-4A
 VEHICLE: HYBRID-53
 STBD DOOR UNLOAD
 SCALE: 1/16"=1'-0"
 RESULT: FAIL
 SEE NOTES 2 & 5

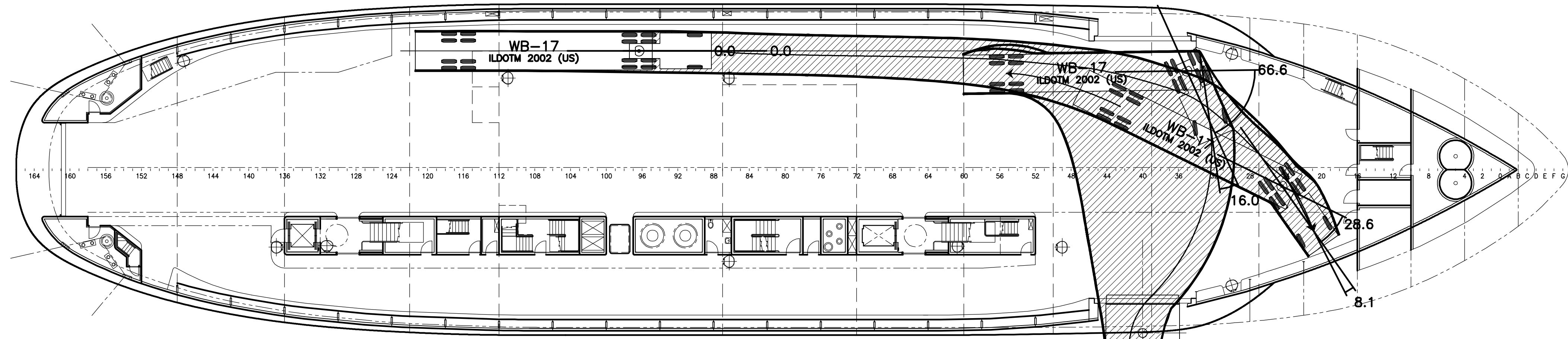


SIGNED COPY
 IS ON FILE



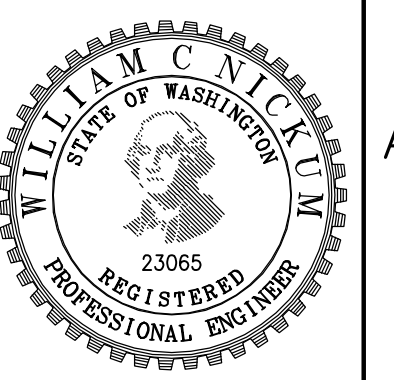


PLAN 4-4C
 VEHICLE: WB-17
 AFT DOOR LOAD
 SCALE: 1/16"=1'-0"
 RESULT: PASS



PLAN 4-4A
 VEHICLE: WB-17
 STBD DOOR UNLOAD
 SCALE: 1/16"=1'-0"
 RESULT: FAIL
 SEE NOTE 4

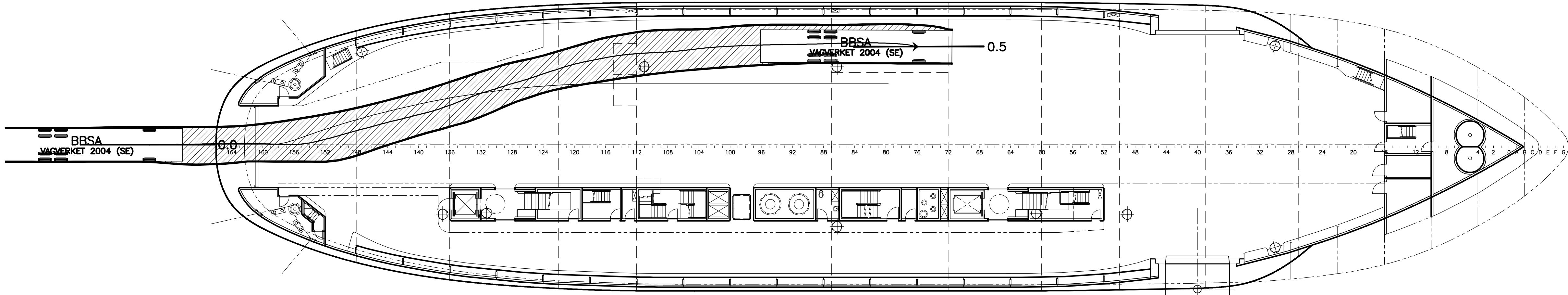
SIGNED COPY
 IS ON FILE



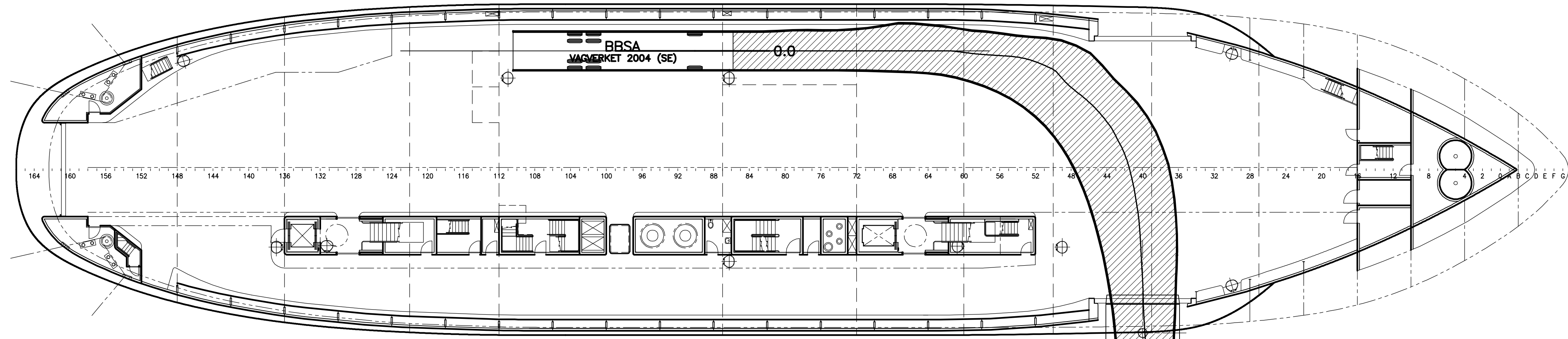
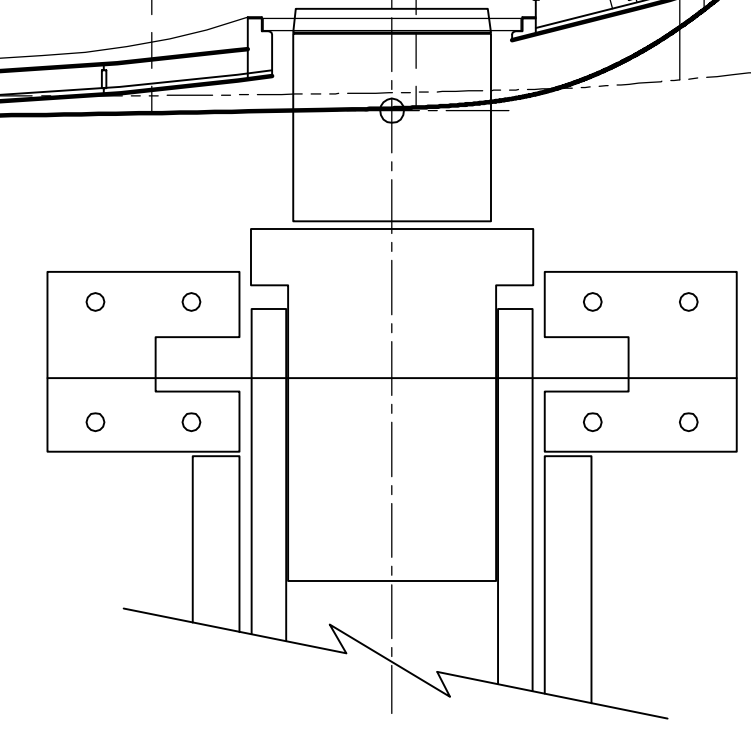
6 5 4 3 2 1

D
C
B
A

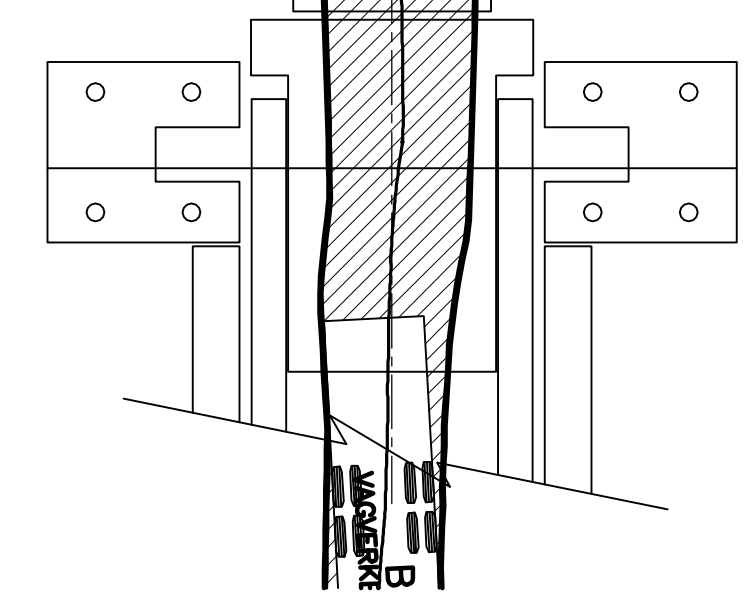
D
C
B
A



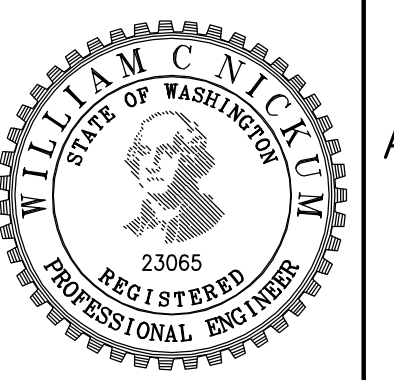
PLAN 5-4C
 VEHICLE: BBSA
 AFT DOOR LOAD
 SCALE: 1/16"=1'-0"
 RESULT: PASS



PLAN 5-4A
 VEHICLE: BBSA
 STBD DOOR UNLOAD
 SCALE: 1/16"=1'-0"
 RESULT: PASS



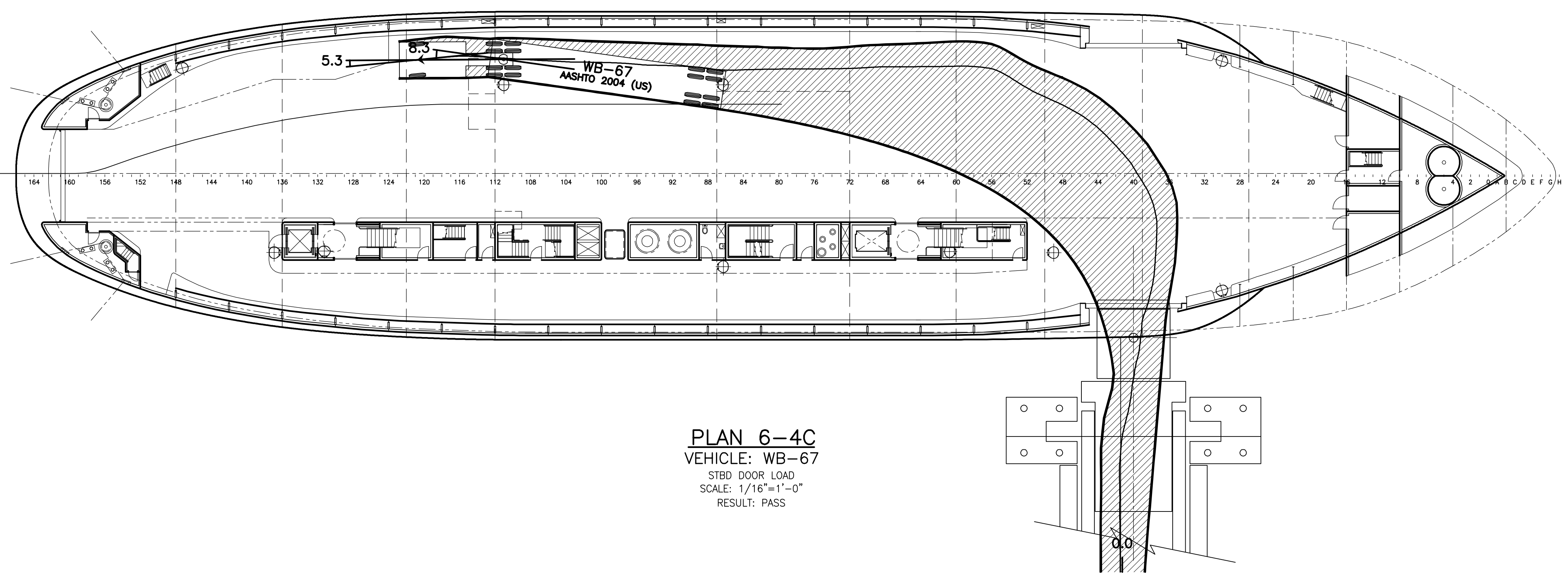
SIGNED COPY
 IS ON FILE



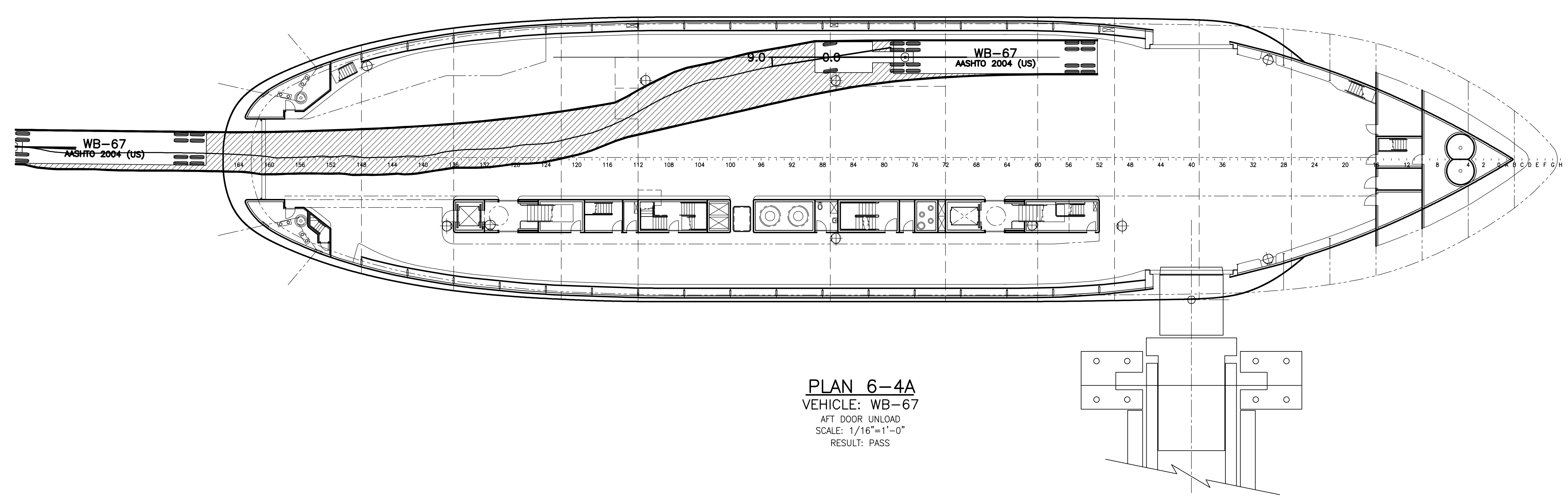
6 5 4 3 2 1

CONFIDENTIAL AND PROPRIETARY PROPERTY OF
Elliott Bay Design Group LLC
 MAY NOT BE USED FOR CONSTRUCTION OR PROVIDED TO
 ANY THIRD PARTIES WITHOUT PRIOR WRITTEN CONSENT.
 ©2010 ELLIOTT BAY DESIGN GROUP.

6 5 4 3 2 1

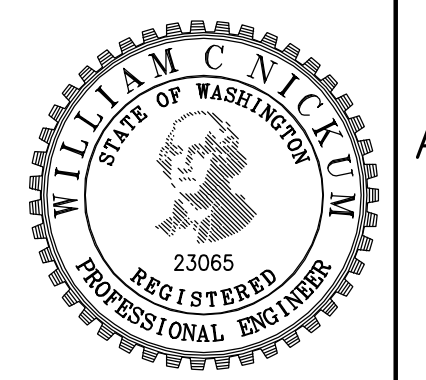


PLAN 6-4C
 VEHICLE: WB-67
 STBD DOOR LOAD
 SCALE: 1/16"=1'-0"
 RESULT: PASS



PLAN 6-4A
 VEHICLE: WB-67
 AFT DOOR UNLOAD
 SCALE: 1/16"=1'-0"
 RESULT: PASS

SIGNED COPY
 IS ON FILE

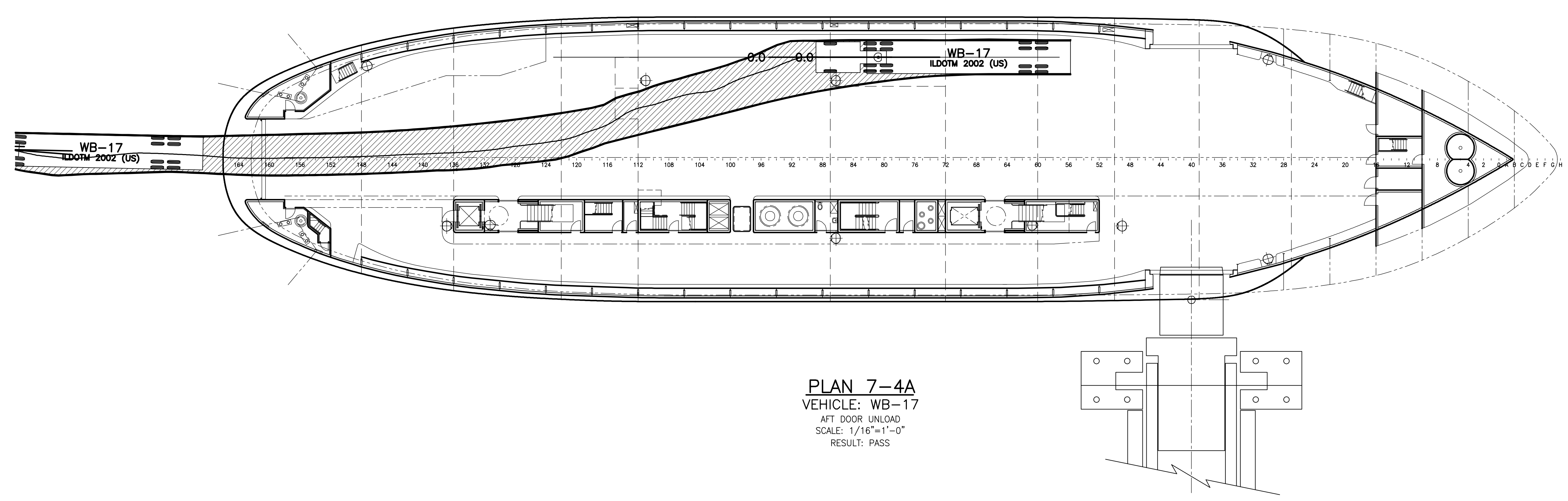
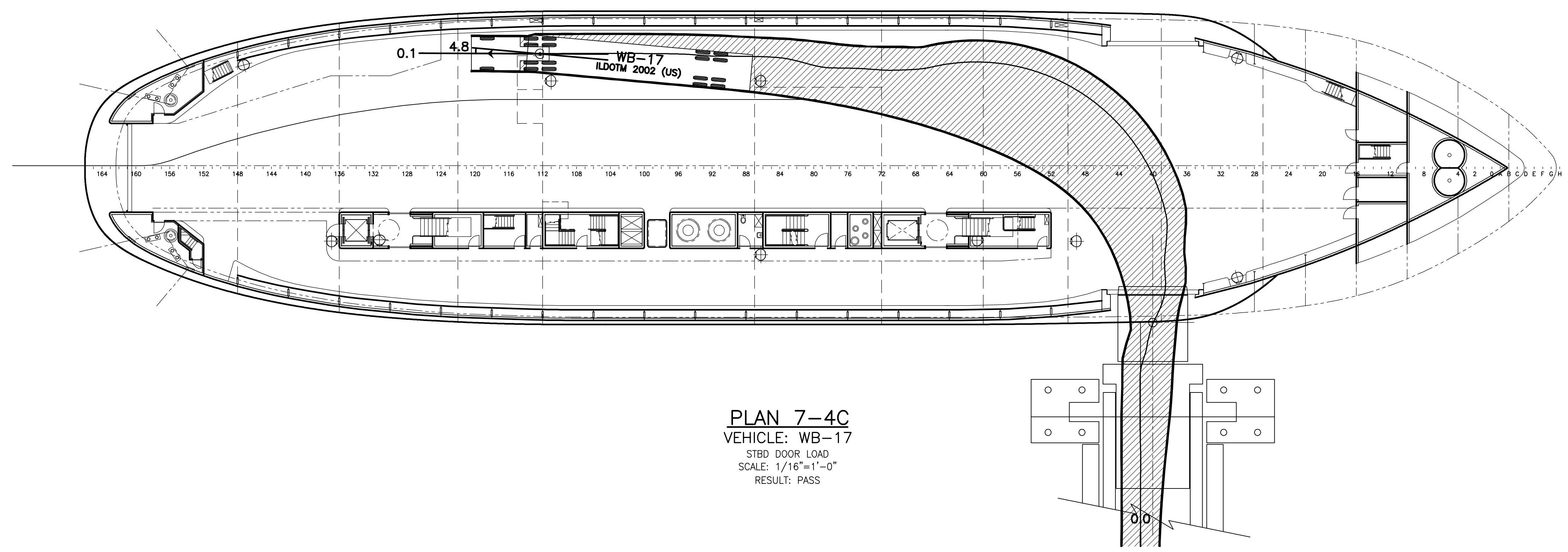


SIZE	DWG NO.	REV
D	06137-005-070-4	-
SCALE	FILE NAME	SHEET
1/16"=1'-0"	06137-005-070-4-	6 OF 10

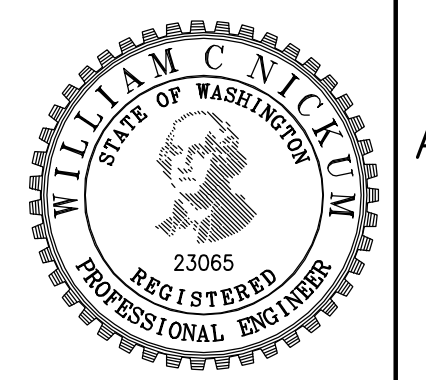
6 5 4 3 2 1

CONFIDENTIAL AND PROPRIETARY PROPERTY OF
Elliott Bay Design Group LLC
 MAY NOT BE USED FOR CONSTRUCTION OR PROVIDED TO
 ANY THIRD PARTIES WITHOUT PRIOR WRITTEN CONSENT.
 ©2010 ELLIOTT BAY DESIGN GROUP.

6 5 4 3 2 1



SIGNED COPY
 IS ON FILE

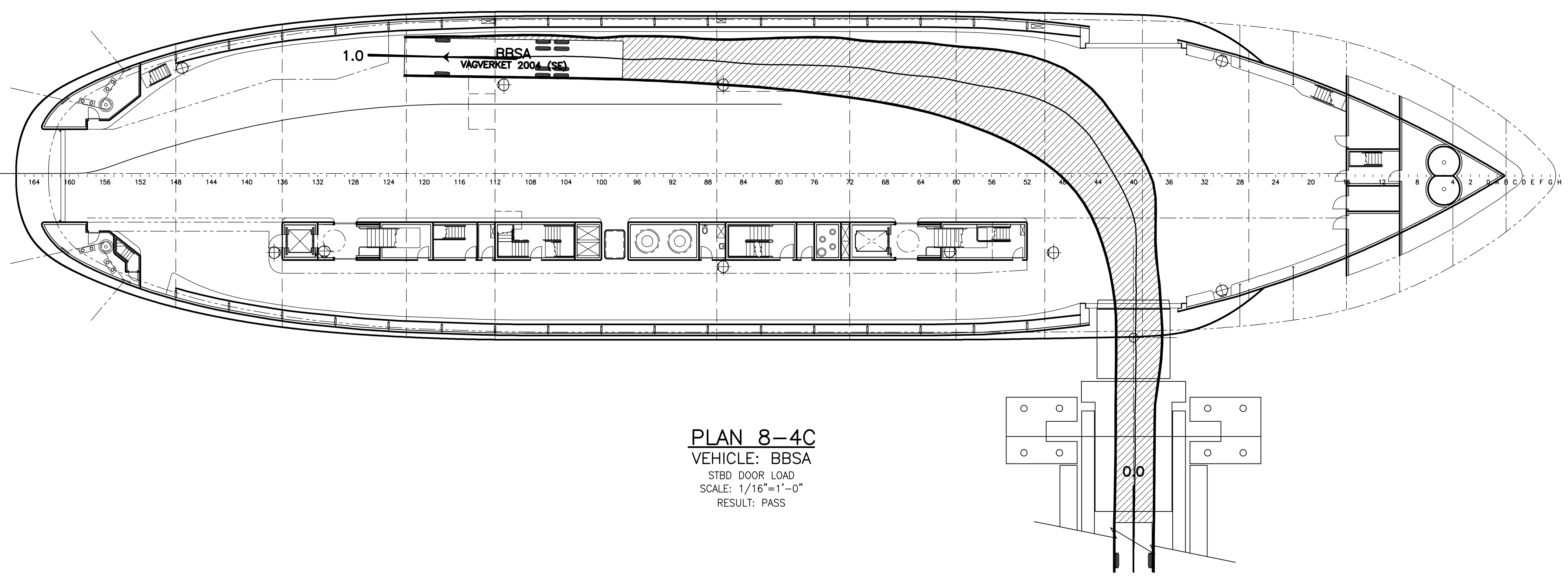


SIZE	D	DWG NO.	06137-005-070-4	REV	-
SCALE	1/16"=1'-0"	FILE NAME	06137-005-070-4-	SHEET	7 OF 10

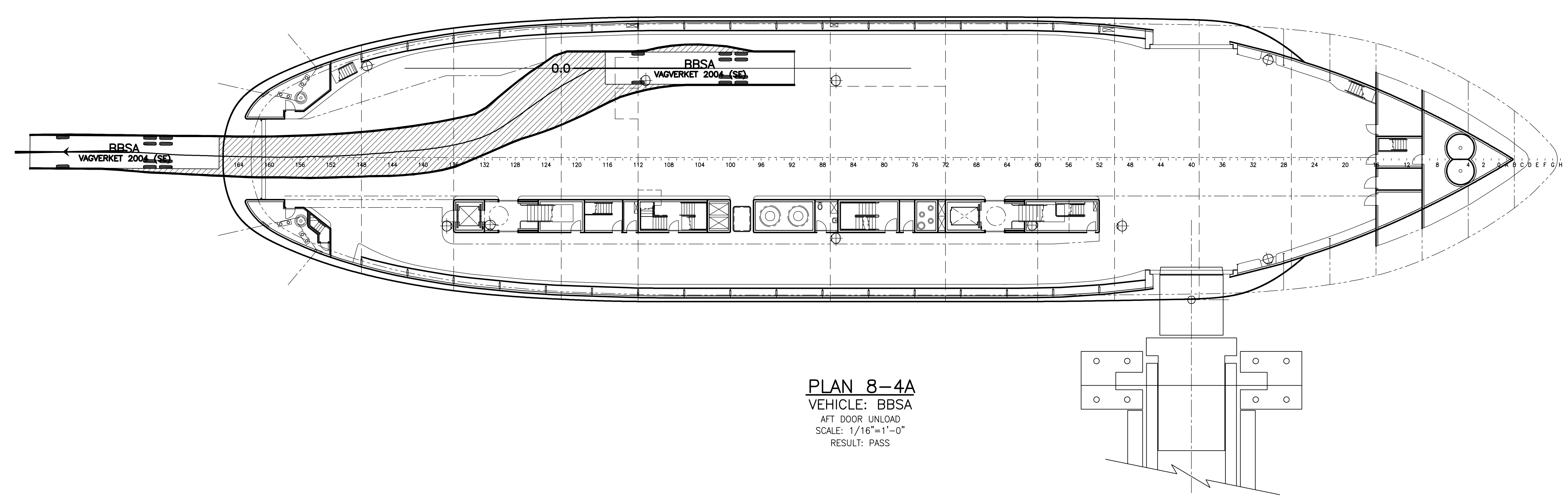
6 5 4 3 2 1

CONFIDENTIAL AND PROPRIETARY PROPERTY OF
Elliott Bay Design Group LLC
 MAY NOT BE USED FOR CONSTRUCTION OR PROVIDED TO
 ANY THIRD PARTIES WITHOUT PRIOR WRITTEN CONSENT.
 ©2010 ELLIOTT BAY DESIGN GROUP.

6 5 4 3 2 1

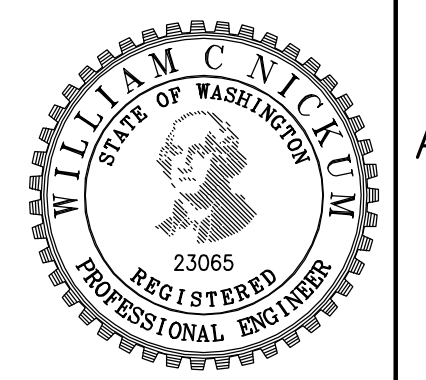


PLAN 8-4C
 VEHICLE: BBSA
 STBD DOOR LOAD
 SCALE: 1/16"=1'-0"
 RESULT: PASS



PLAN 8-4A
 VEHICLE: BBSA
 AFT DOOR UNLOAD
 SCALE: 1/16"=1'-0"
 RESULT: PASS

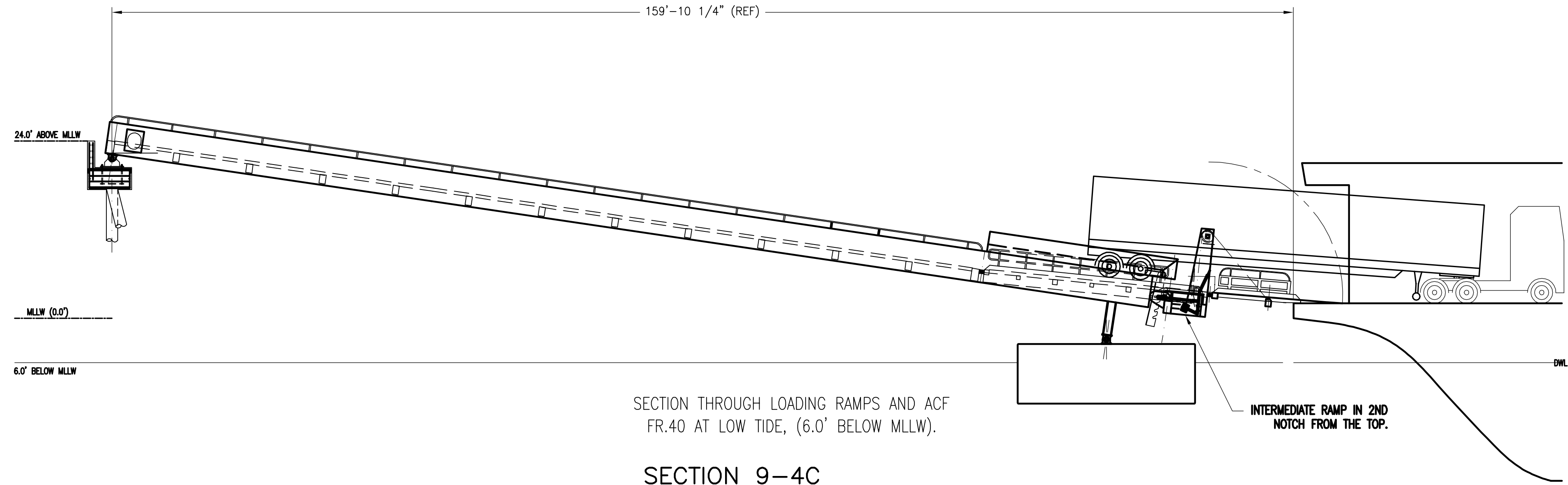
SIGNED COPY
 IS ON FILE



SIZE	D	DWG NO.	06137-005-070-4	REV	-
SCALE	1/16"=1'-0"	FILE NAME	06137-005-070-4-	SHEET	8 OF 10

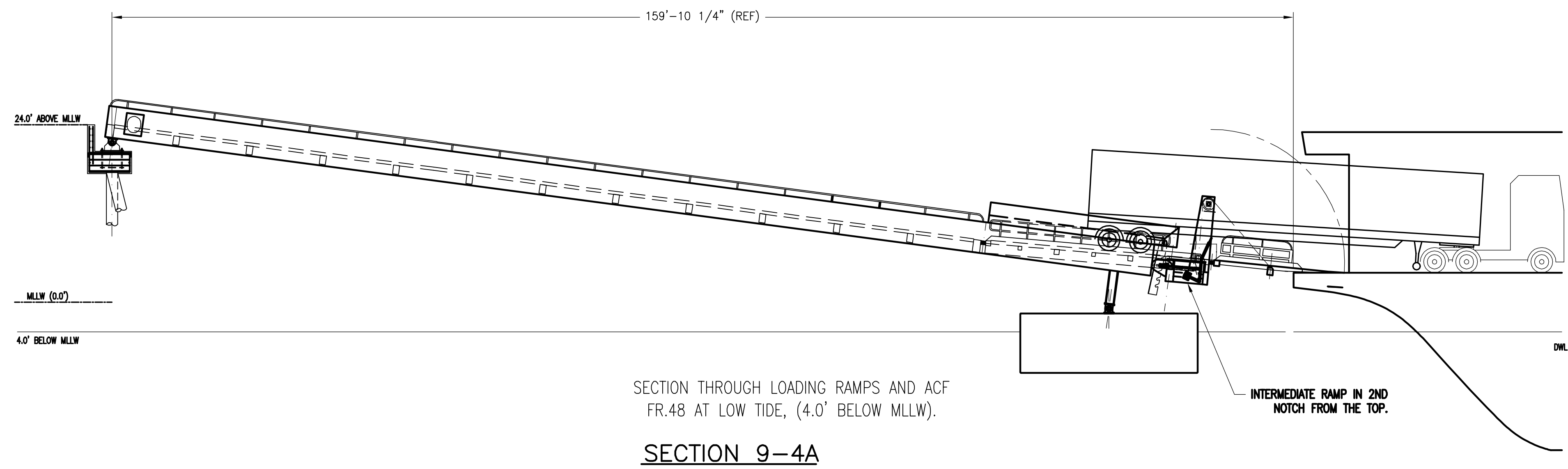
6 5 4 3 2 1

AUKE BAY TERMINAL INTERFACE
 STBD DOOR LOAD STUDY



SECTION THROUGH LOADING RAMPS AND ACF
 FR.40 AT LOW TIDE, (6.0' BELOW MLLW).

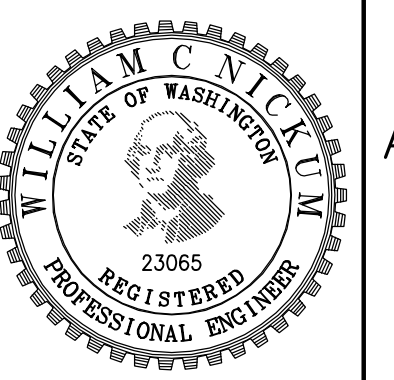
SECTION 9-4C
 VEHICLE: HYBRID-53
 STBD DOOR LOAD
 RESULT: FAIL
 SEE NOTE 2



SECTION THROUGH LOADING RAMPS AND ACF
 FR.48 AT LOW TIDE, (4.0' BELOW MLLW).

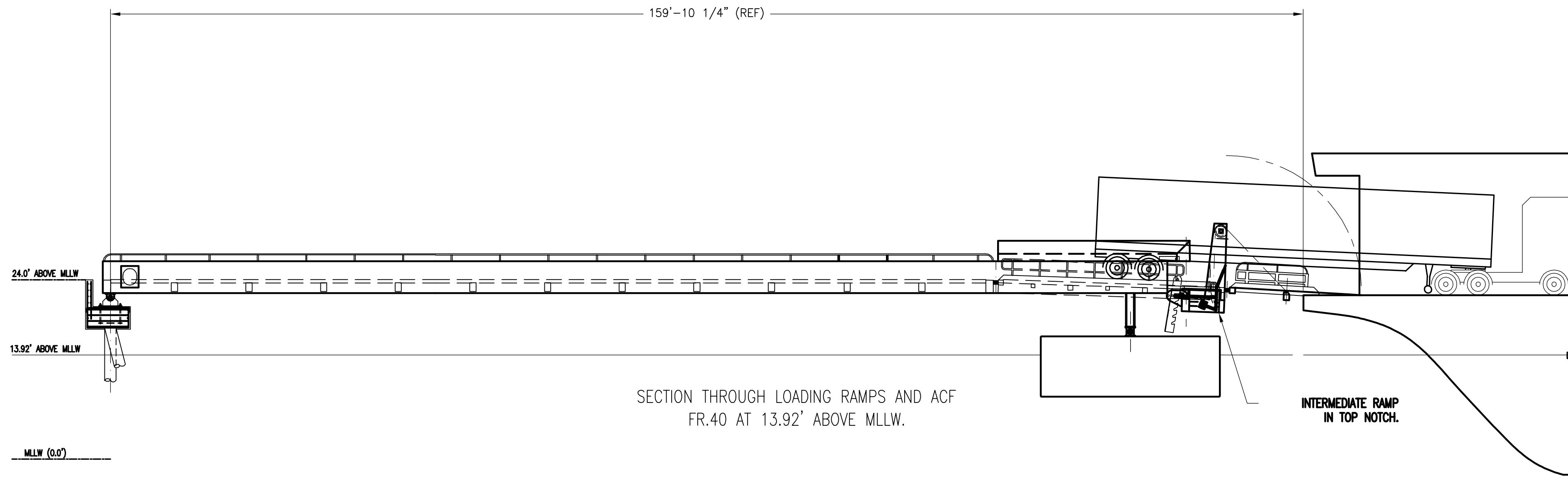
SECTION 9-4A
 VEHICLE: HYBRID-53
 STBD DOOR LOAD
 RESULT: PASS
 SEE NOTE 2

SIGNED COPY
 IS ON FILE



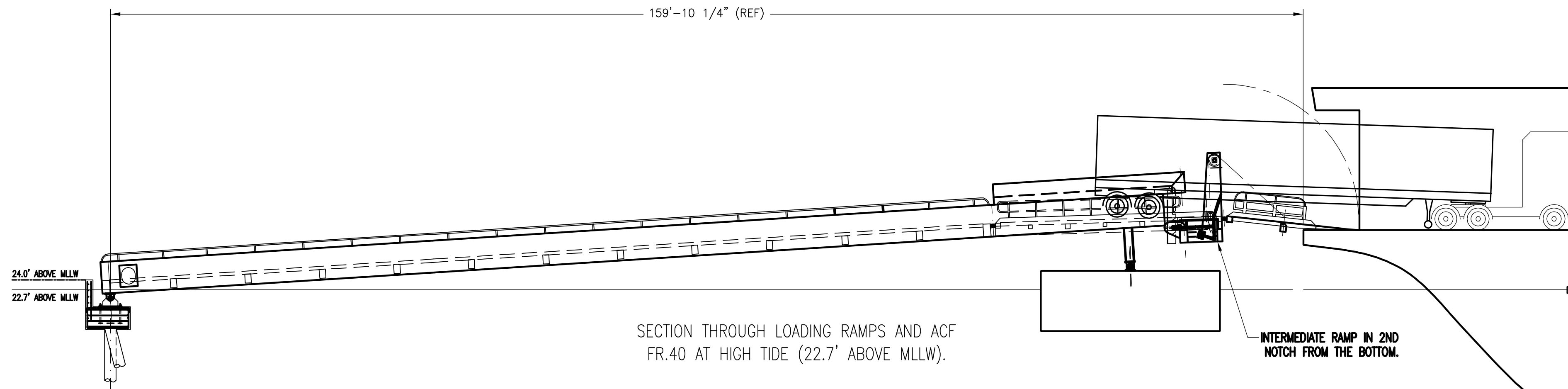
CONFIDENTIAL AND PROPRIETARY PROPERTY OF
Elliott Bay Design Group LLC
 MAY NOT BE USED FOR CONSTRUCTION OR PROVIDED TO
 ANY THIRD PARTIES WITHOUT PRIOR WRITTEN CONSENT.
 ©2010 ELLIOTT BAY DESIGN GROUP.

AUKE BAY TERMINAL INTERFACE
 STBD DOOR LOAD STUDY



SECTION THROUGH LOADING RAMPS AND ACF
 FR.40 AT 13.92' ABOVE MLLW.

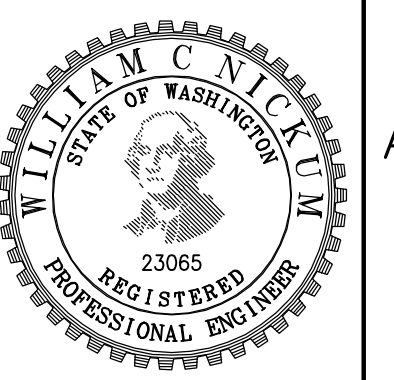
SECTION 10-4C
 VEHICLE: HYBRID-53
 STBD DOOR LOAD
 RESULT: PASS
 SEE NOTE 2



SECTION THROUGH LOADING RAMPS AND ACF
 FR.40 AT HIGH TIDE (22.7' ABOVE MLLW).

SECTION 10-4A
 VEHICLE: HYBRID-53
 STBD DOOR LOAD
 RESULT: PASS
 SEE NOTE 2

SIGNED COPY
 IS ON FILE



SIZE	D	DWG NO.	06137-005-070-4	REV	-
SCALE	3/32"=1'-0"	FILE NAME	06137-005-070-4-	SHEET	10 OF 10