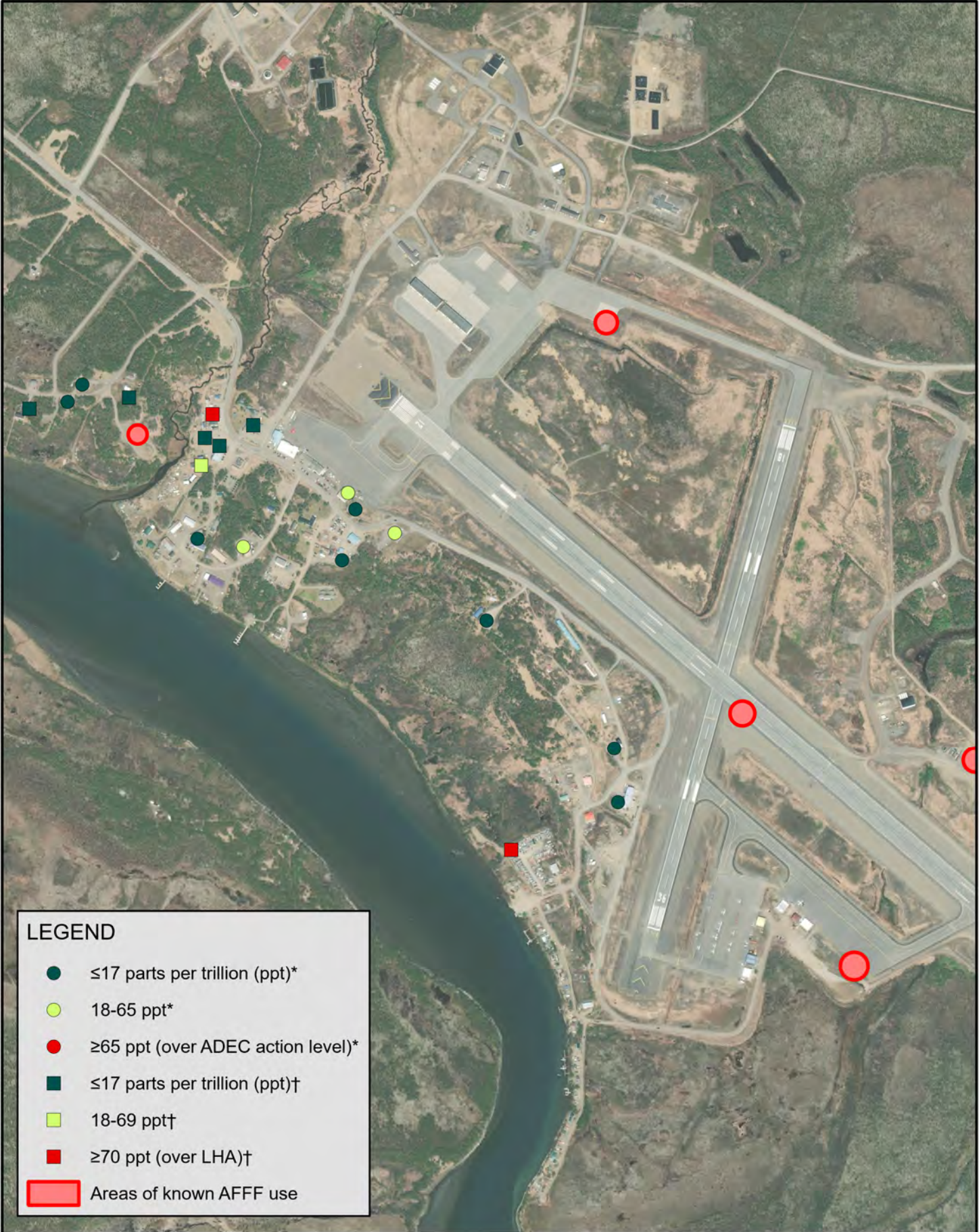


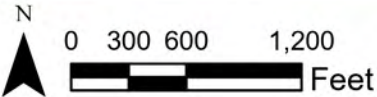
102582-011

Path: T:\GIS_Projects\Statewide PFAS\King Salmon\KingSalmon_DOT&PF\KingSalmon_DOT&PF.aprx User: NWL Date: 4/9/2024
Imagery provided by Maxar Products, Dynamic Mosaic © 2020 Maxar Technologies Inc., Alaska Geospatial Office, USGS, available: <https://geoportals.alaska.gov/portal/home/item.html?id=1b6cdd4a872a8456085e99e6fa7231f168>, accessed April, 2024.



LEGEND

- ≤17 parts per trillion (ppt)*
- 18-65 ppt*
- ≥65 ppt (over ADEC action level)*
- ≤17 parts per trillion (ppt)†
- 18-69 ppt†
- ≥70 ppt (over LHA)†
- Areas of known AFFF use



NOTES:

1. Highest concentration for each well is presented on this map.
This figure depicts a compilation of data recorded throughout the life of the project. Some data is older and may not represent the current conditions.
† Wells sampled after April 2019; sum of PFOS and PFOA concentrations.
*Wells sampled before April 2019; sum of PFOS, PFOA, PFHxS, PFHpA, and PFNA concentrations.

HIGHEST REPORTED WATER SUPPLY WELL ANALYTICAL RESULTS

Figure 1